

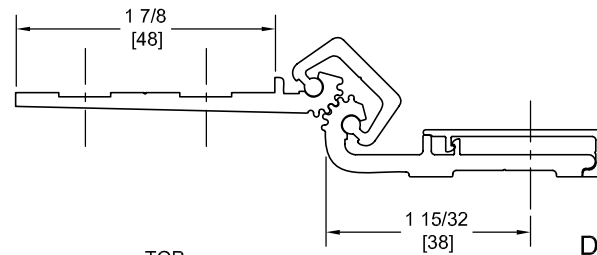
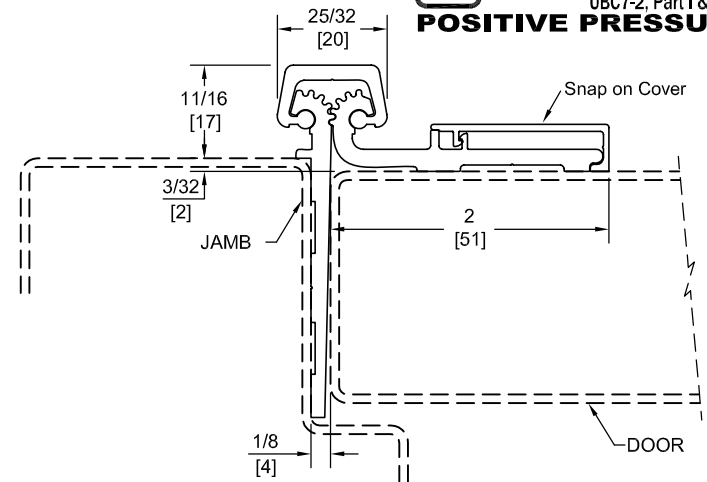
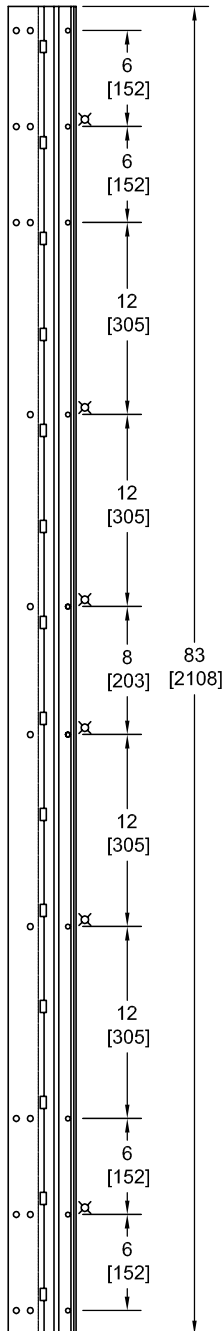
HS83

TEMPLATE HALF SURFACE CONTINUOUS GEARED ALUMINUM HINGE

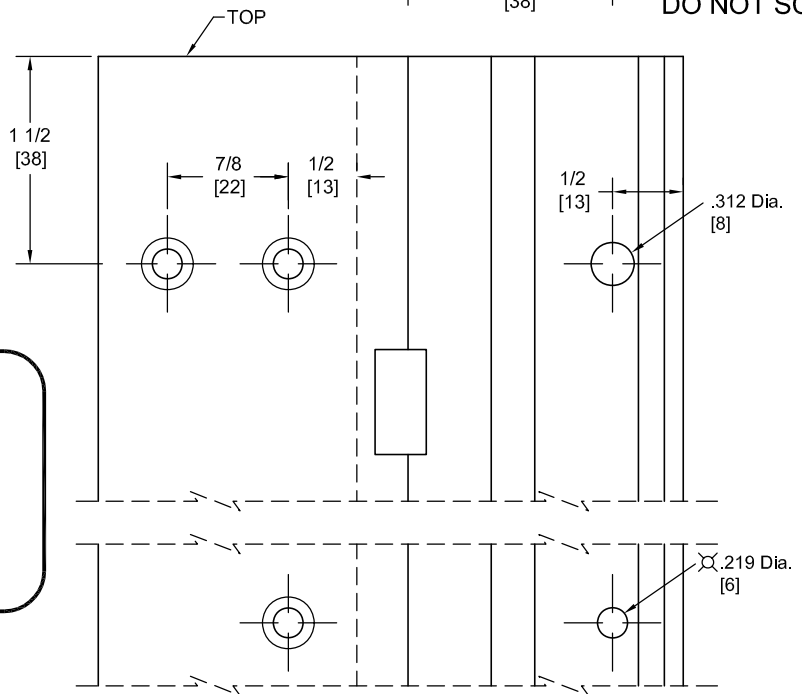


Fire Rated
Classified & Listed to
meet the requirements of
Standards UL10B, UL10C,
UBC7-2, Part I & BS476

POSITIVE PRESSURE



DO NOT SCALE



⊗ = Locator Holes

**** CAUTION ****
Due To Frame
Installation
Variations,
Pre-drilling
For Fasteners
Is Not
Recommended

PEMKO Template Full Surface Continuous Geared Aluminum Hinges CHS83/DHS83 are made to conform to this drawing.

PEMCO CHS83/DHS83 hinges can be supplied with Electric Functions - See Electrical Classification Section.

Machine Screw Size - Jamb Leaf - No. 12-24 x 7/16 FHUC Thread-forming.

- Door Leaf - No. 12-24 x 3/4 Pan Head Self-drilling.

- No. 10 x 1-1/2 Truss Head SMS.

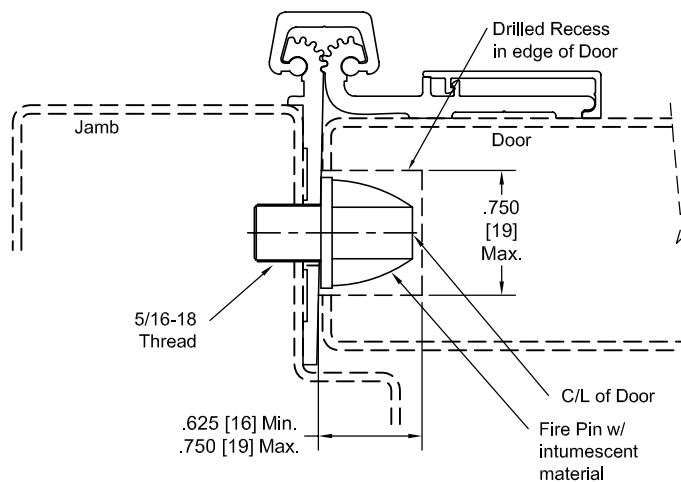
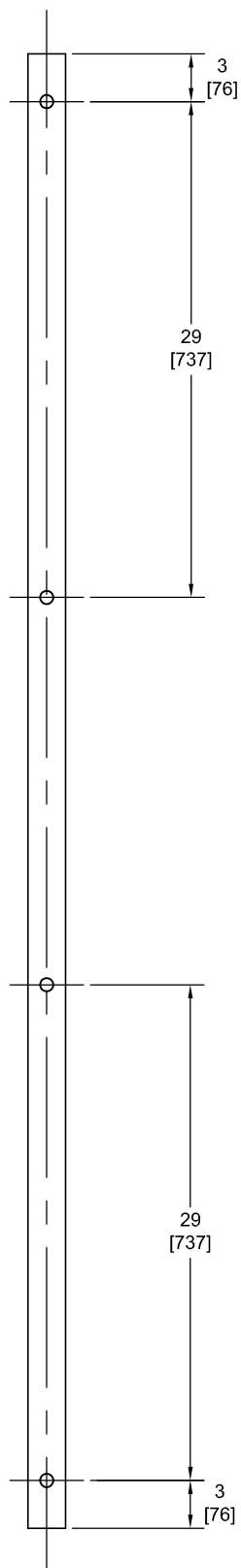
- No. 1/4-20 x 1 PCH Shoulder Screws w/ No. 1/4-20 x 1 5/8 Thru Bolts.

PEMKO Continuous Geared Aluminum Hinges are Listed for fire applications up to 90 minutes without special preparation; for 3 hour openings using hollow metal doors and hollow metal frames on Masonry/Drywall, Fire Pins (supplied separately) must be used. See back for locations.

Manufacturer reserves the right to make changes without formal notice.

Continued on Back...

Fire Pin Application



Concealed Circuit (CC) Application

SEE ELECTRICAL APPLICATION SECTION
IN TECHNICAL MANUAL

Magnetic Monitor (MM) Application

SEE ELECTRICAL APPLICATION SECTION
IN TECHNICAL MANUAL

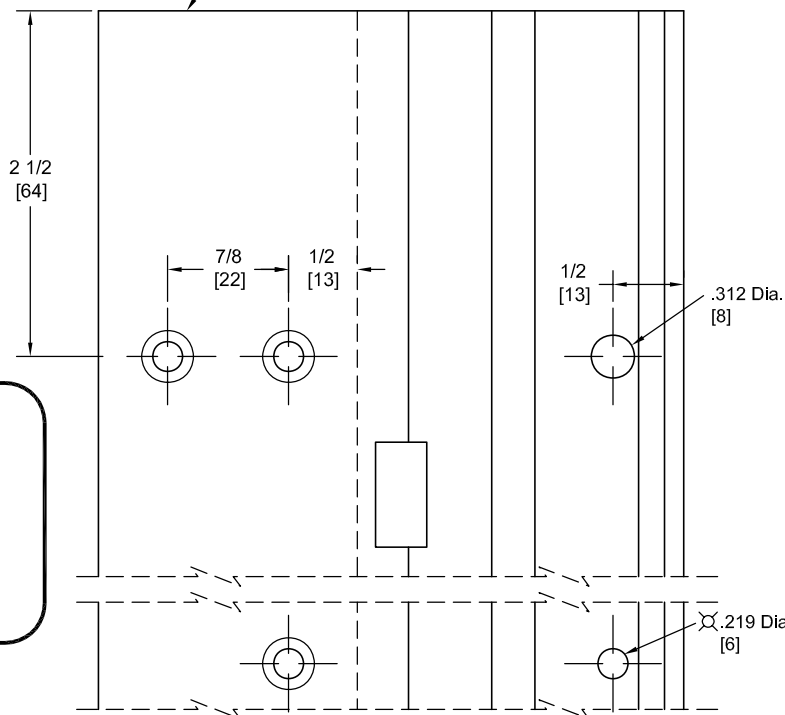
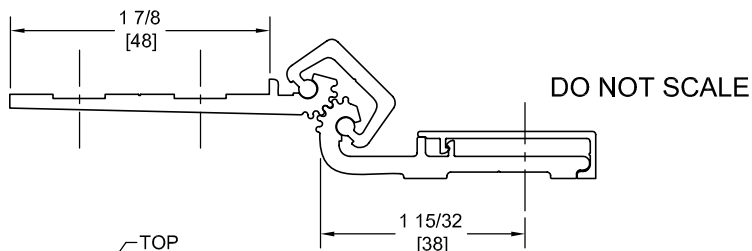
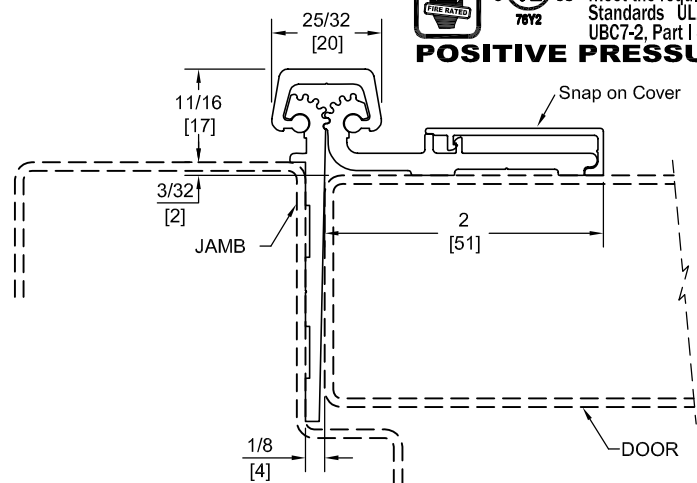
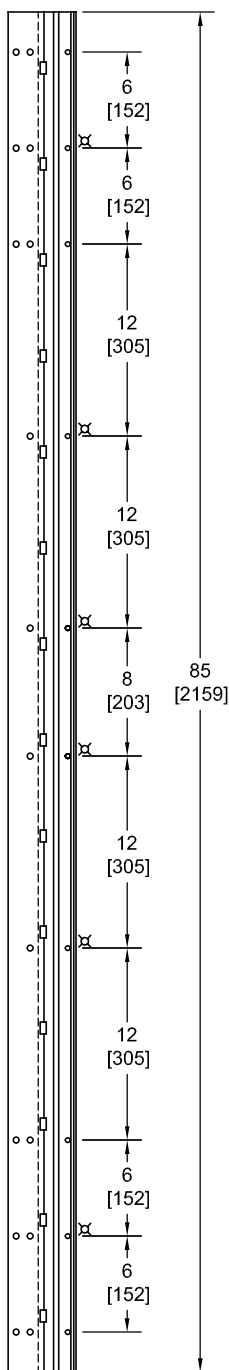
HS85

TEMPLATE HALF SURFACE CONTINUOUS GEARED ALUMINUM HINGE



Fire Rated
Classified & Listed to
meet the requirements of
Standards UL10B, UL10C,
UBC7-2, Part I & BS476

POSITIVE PRESSURE



**** CAUTION ****
Due To Frame
Installation
Variations,
Pre-drilling
For Fasteners
Is Not
Recommended

PEMKO Template Full Surface Continuous Geared Aluminum Hinges CHS85/DHS85 are made to conform to this drawing.

PEMKO CHS85/DHS85 hinges can be supplied with Electric Functions - See Electrical Classification Section.

Machine Screw Size - Jamb Leaf - No. 12-24 x 7/16 FHUC Thread-forming.

- Door Leaf - No. 12-24 x 3/4 Pan Head Self-drilling.

- No. 10 x 1-1/2 Truss Head SMS.

- No. 1/4-20 x 1 PCH Shoulder Screws w/ No. 1/4-20 x 1 5/8 Thru Bolts.

PEMKO Continuous Geared Aluminum Hinges are Listed for fire applications up to 90 minutes without special preparation; for 3 hour openings using hollow metal doors and hollow metal frames on Masonry/Drywall, Fire Pins (supplied separately) must be used. See back for locations.

Manufacturer reserves the right to make changes without formal notice.

⊗ = Locator Holes

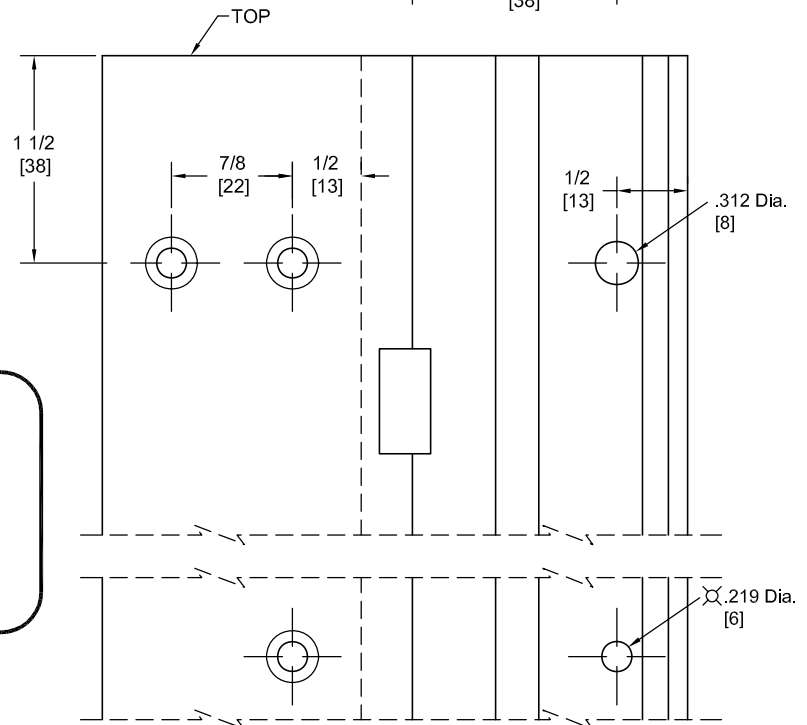
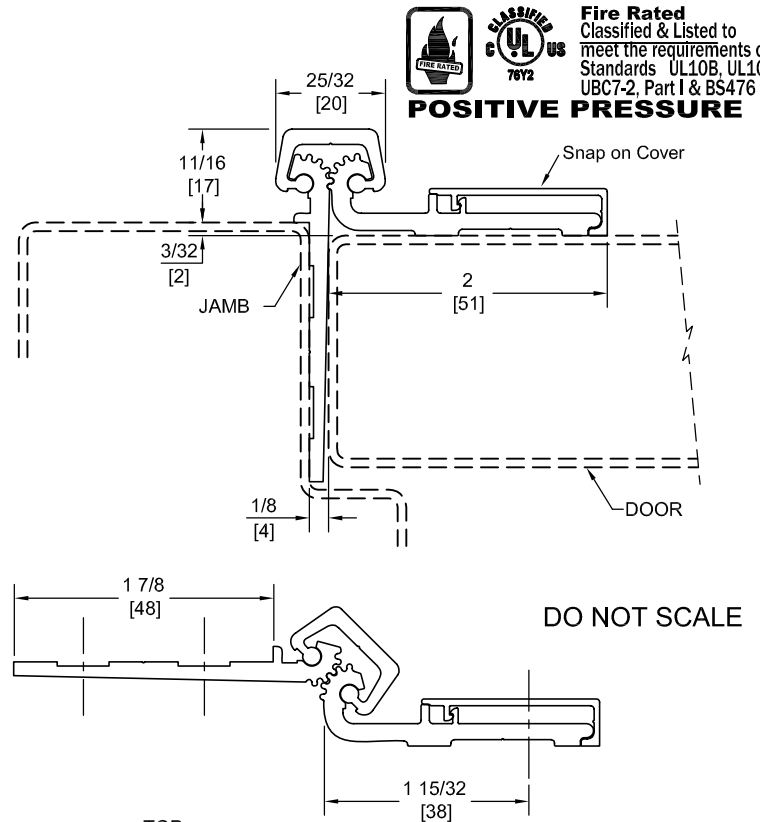
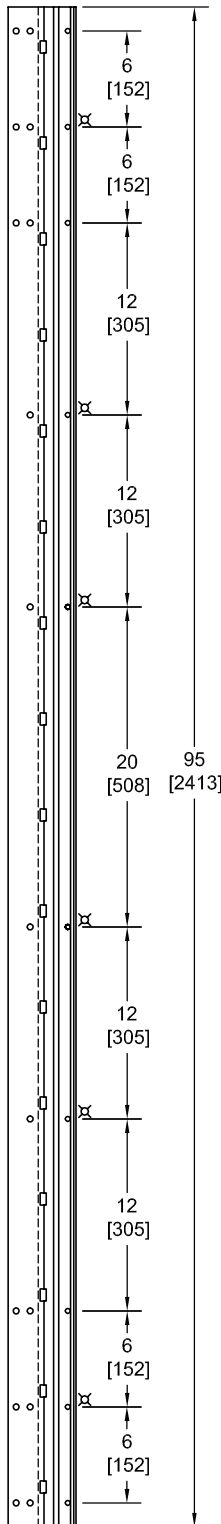


Magnetic Monitor (MM) Application

PEMKO Manufacturing Company

HS95

TEMPLATE HALF SURFACE CONTINUOUS GEARED ALUMINUM HINGE



**** CAUTION ****
Due To Frame
Installation
Variations,
Pre-drilling
For Fasteners
Is Not
Recommended

PEMKO Template Full Surface Continuous Geared Aluminum Hinges CHS95/DHS95 are made to conform to this drawing.

PEMKO CHS95/DHS95 hinges can be supplied with Electric Functions - See Electrical Application Section.

Machine Screw Size - Jamb Leaf - No. 12-24 x 7/16 FHUC Thread-forming.

- Door Leaf - No. 12-24 x 3/4 Pan Head Self-drilling.

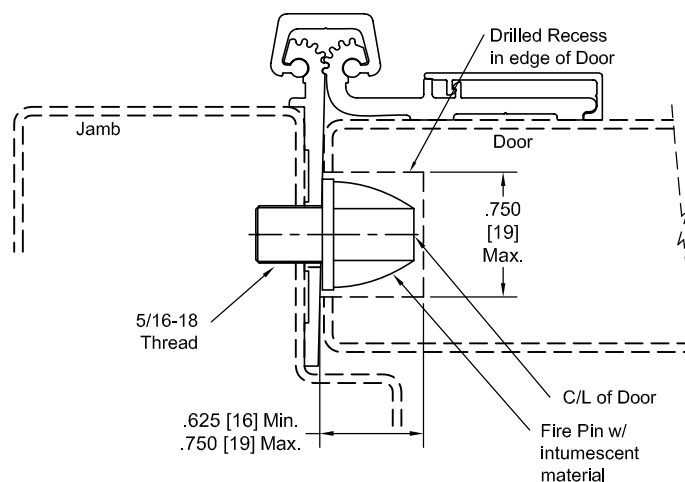
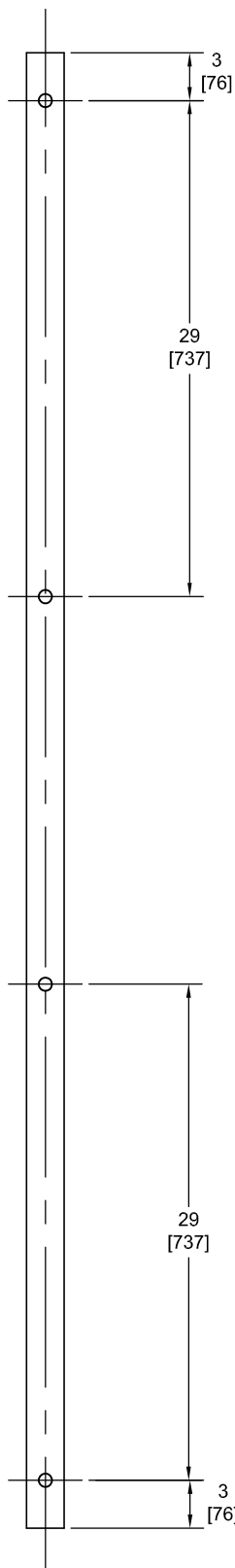
- No. 10 x 1-1/2 Truss Head SMS.

- No. 1/4-20 x 1 PCH Shoulder Screws w/ No. 1/4-20 x 1 5/8 Thru Bolts.

PEMKO Continuous Geared Aluminum Hinges are Listed for fire applications up to 90 minutes without special preparation; for 3 hour openings using hollow metal doors and hollow metal frames on Masonry/Drywall, Fire Pins (supplied separately) must be used. See back for locations.

Manufacturer reserves the right to make changes without formal notice.

Fire Pin Application



Concealed Circuit (CC) Application

SEE ELECTRICAL APPLICATION SECTION
IN TECHNICAL MANUAL

Magnetic Monitor (MM) Application

SEE ELECTRICAL APPLICATION SECTION
IN TECHNICAL MANUAL

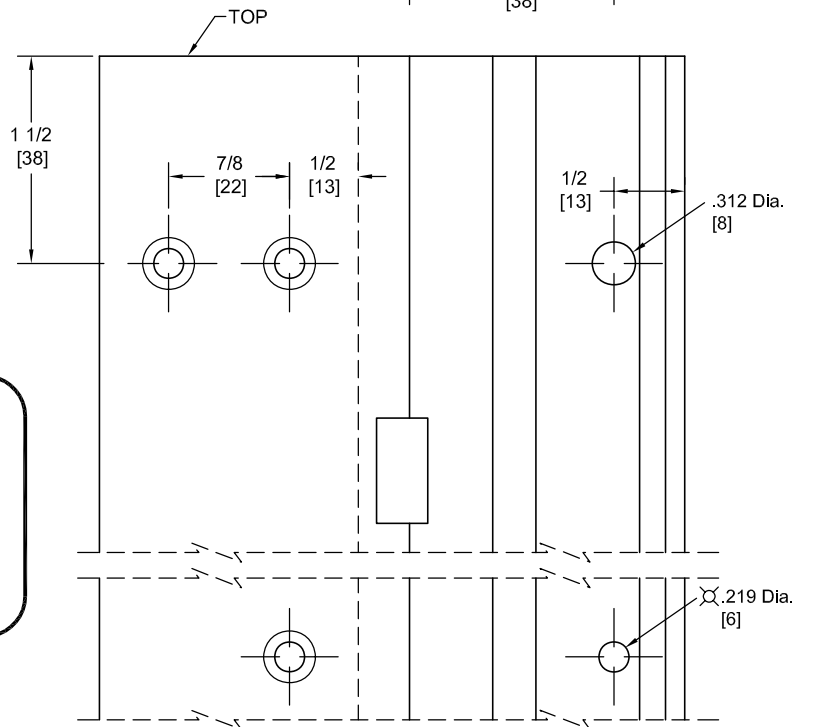
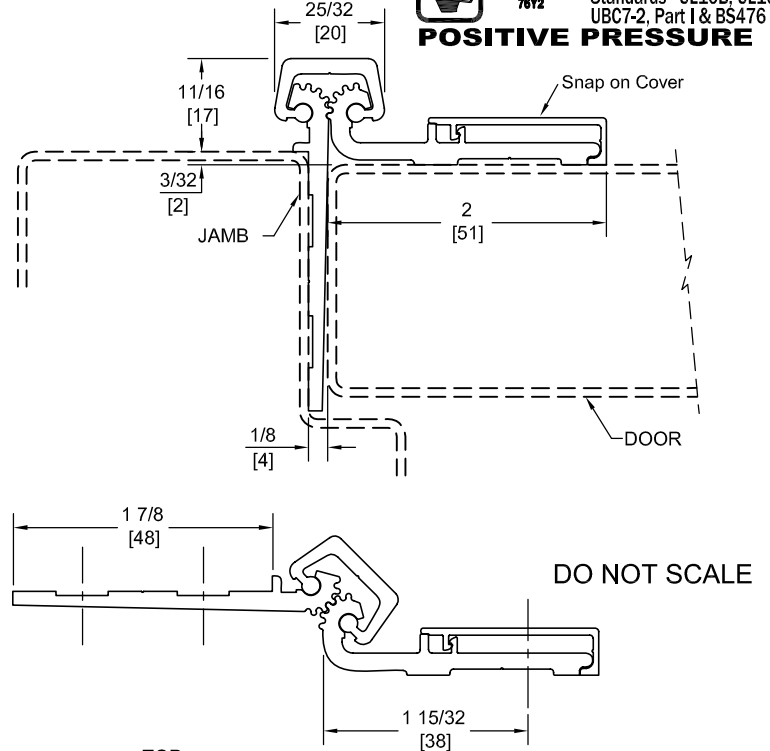
HS120

TEMPLATE HALF SURFACE CONTINUOUS GEARED ALUMINUM HINGE



Fire Rated
Classified & Listed to
meet the requirements of
Standards UL10B, UL10C,
UBC7-2, Part I & BS476

POSITIVE PRESSURE



**** CAUTION ****
Due To Frame
Installation
Variations,
Pre-drilling
For Fasteners
Is Not
Recommended

PEMCO Template Full Surface Continuous Geared Aluminum Hinges CHS120/DHS120 are made to conform to this drawing.

PEMCO CHS120/DHS120 hinges can be supplied with Electric Functions - See Electrical Application.

Machine Screw Size - Jamb Leaf - No. 12-24 x 7/16 FHUC Thread-forming.

- Door Leaf - No. 12-24 x 3/4 Pan Head Self-drilling.

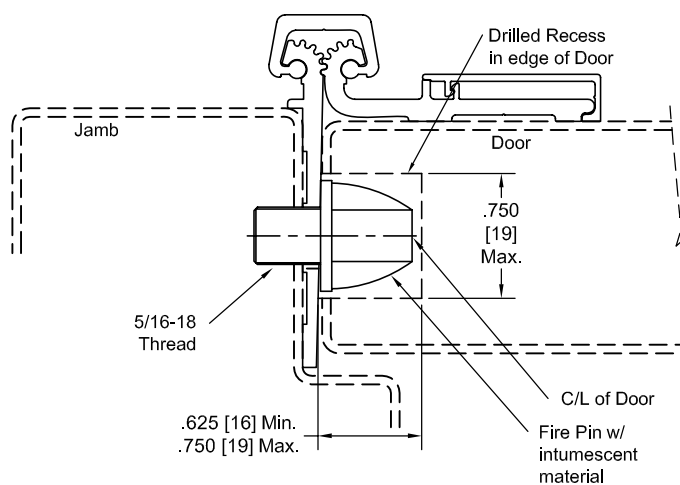
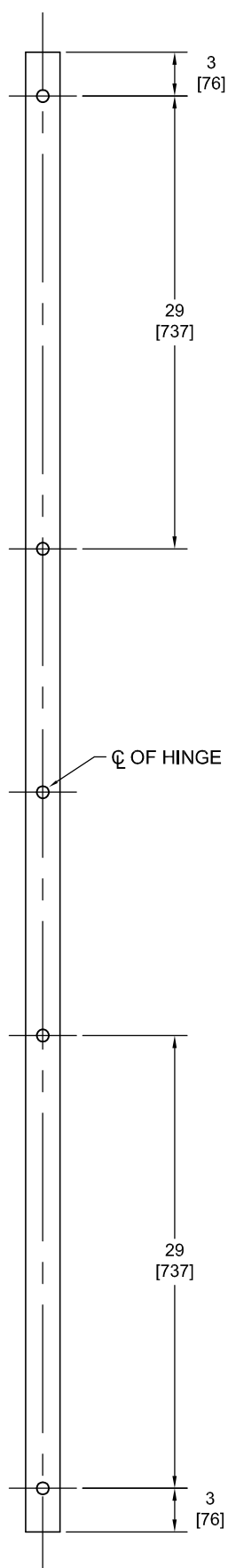
- No. 10 x 1-1/2 Truss Head SMS.

- No. 1/4-20 x 1 PCH Shoulder Screws w/ No. 1/4-20 x 1 5/8 Thru Bolts.

PEMCO Continuous Geared Aluminum Hinges are Listed for fire applications up to 90 minutes without special preparation; for 3 hour openings using hollow metal doors and hollow metal frames on Masonry/Drywall, Fire Pins (supplied separately) must be used. See back for locations.

Manufacturer reserves the right to make changes without formal notice.

Fire Pin Application



Concealed Circuit (CC) Application

SEE ELECTRICAL APPLICATION SECTION
IN TECHNICAL MANUAL

Magnetic Monitor (MM) Application

SEE ELECTRICAL APPLICATION SECTION
IN TECHNICAL MANUAL