



Hettich America L.P.  
4295 Hamilton Mill Road, Suite 400  
Buford, GA 30518  
Technical Hotline: (800) 277-2222

## Grant® 6000

SLIDING DOOR HARDWARE  
Capacity: Up to 50 lbs, 75 lbs per door

### Reversible bypassing with "gyro-set" adjustable carrier

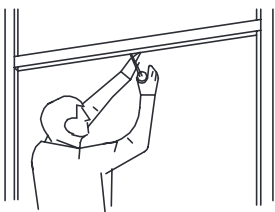
#### Specification 6000 Sliding Door Hardware Sets

Since these instructions apply to different styles, note your set number, and follow those steps pertaining to it.

These instructions assume a properly framed rough opening with carefully leveled header.

Set No.	Type Of Installation	Door Thickness	Type of Mounting	Wheels per carrier	Minimum Headroom required	Vertical adjustment	Type of track	Weight capacity lbs per door
6023	single & bi-parting	3/4" to 1-3/4"	side	one	1-1/8"	1/4"	aluminum	50
6053	single & bi-parting	3/4" to 1-3/4"	side	two	1-1/8"	1/4"	aluminum	75
6034	bypassing	3/4" or 1-3/8"	side	one	1-1/8"	1/4"	aluminum	50
6064	bypassing	3/4" or 1-3/8"	side	two	1-1/8"	1/4"	aluminum	75
6065	bypassing	3/4"	side	two	1-1/8"	1/4"	aluminum, fascia	75

1.



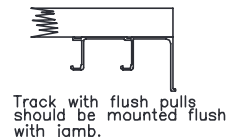
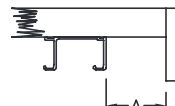
#### MOUNTING TRACK FIG.1.

Mount track to header with face of track facing room, using #8x1-1/4" R.H.W.S. supplied.

To allow for placement of fascia strip on the sets listed at right, mount track back from front of header the dimension shown in table.

For 1-3/4" doors add 3/4" door.

Set No	DIMENSION 'A'		FASCIA TRACK SETS
	3/4" Door	1-3/8" Door	
6023	1/8"	1"	6035
6053	1/8"	1"	6065



Track with flush pulls should be mounted flush with jamb.

2.

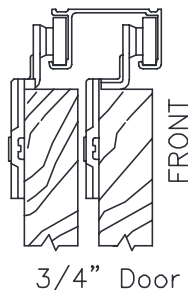
#### MOUNT CARRIERS TO DOORS

Mount carriers approximately 4" from edge of door.

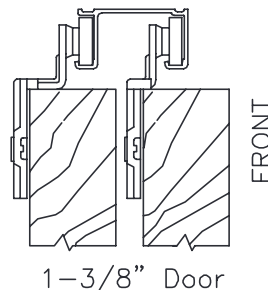
#### NOTE:

For 3/4" doors use wide offset carrier on front door.

For 1-3/8" doors use wide offset carrier on rear door.

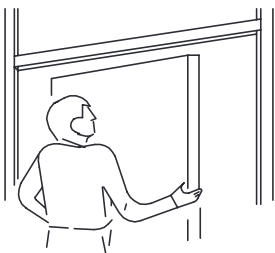


3/4" Door



1-3/8" Door

3.



#### HANGING DOOR

6023 Lift door and slip wheels of carriers into track. Tilt bottom of door outward to facilitate insertion.  
6053

6034 For 3/4" doors, use wide offset carriers on front door. For 1-3/8" doors use wide offset carriers on rear door. See instructions on carriers. Hang rear door first, tilt bottom of door outward to facilitate insertion.  
6064  
6065



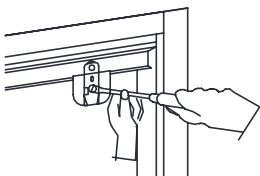
Hettich America L.P.  
4295 Hamilton Mill Road, Suite 400  
Buford, GA 30518  
Technical Hotline: (800) 277-2222

Page 2 of 2

## Grant® 6000

SLIDING DOOR HARDWARE  
Capacity: Up to 50 lbs, 75 lbs per door

4.



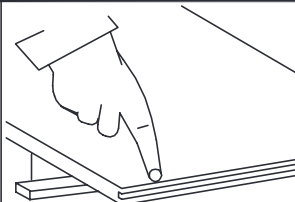
### ADJUSTING DOORS

Slightly loosen mounting screws and turn back adjusting screw to raise or lower door. Then tighten mounting screws firmly.

#### NOTE:

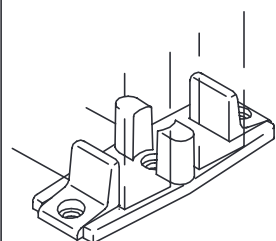
Leave minimum 1/4" clearance between door and saddle, to allow for floor guide.

5.



### FOR GROOVED INSTALLATIONS ONLY

Cut a continuous saw slot in center of bottom door 1/4" wide x 7/8" deep.

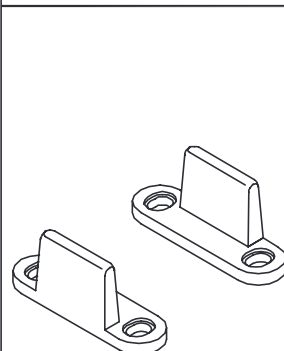


### 114 FLOOR GUIDE



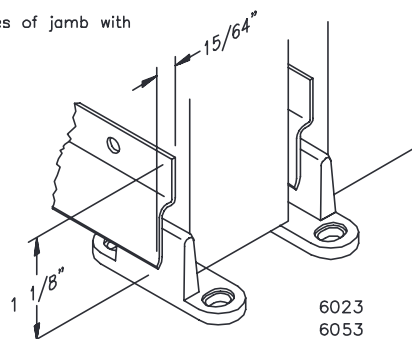
Instructions for installing No.114 floor guide are printed on envelope containing this guide

6034 6064  
6065



### 110 FLOOR GUIDE

Mount molded nylon floor guides on flat sides of jamb with screws supplied.



6023  
6053

6.



### FINGER PULL

Drill a 3/4" diameter mortise in door, 3/8" deep, centered 2" from door edge, and 3/4" from bottom of door. Force finger pull into hole with pressure. If necessary, place a block over the pull and tap it lightly with hammer.