

Assembly Instructions
Wing Line Grant® BF25 - up to 25 lbs/panel (11 kg) for
bi-fold application

Technik für Möbel



Tools required:

7/16" drill bit
 Phillips head screwdriver
 5/16" wrench
 11/16" wrench
 5/32" hex key
 1/16" hex key

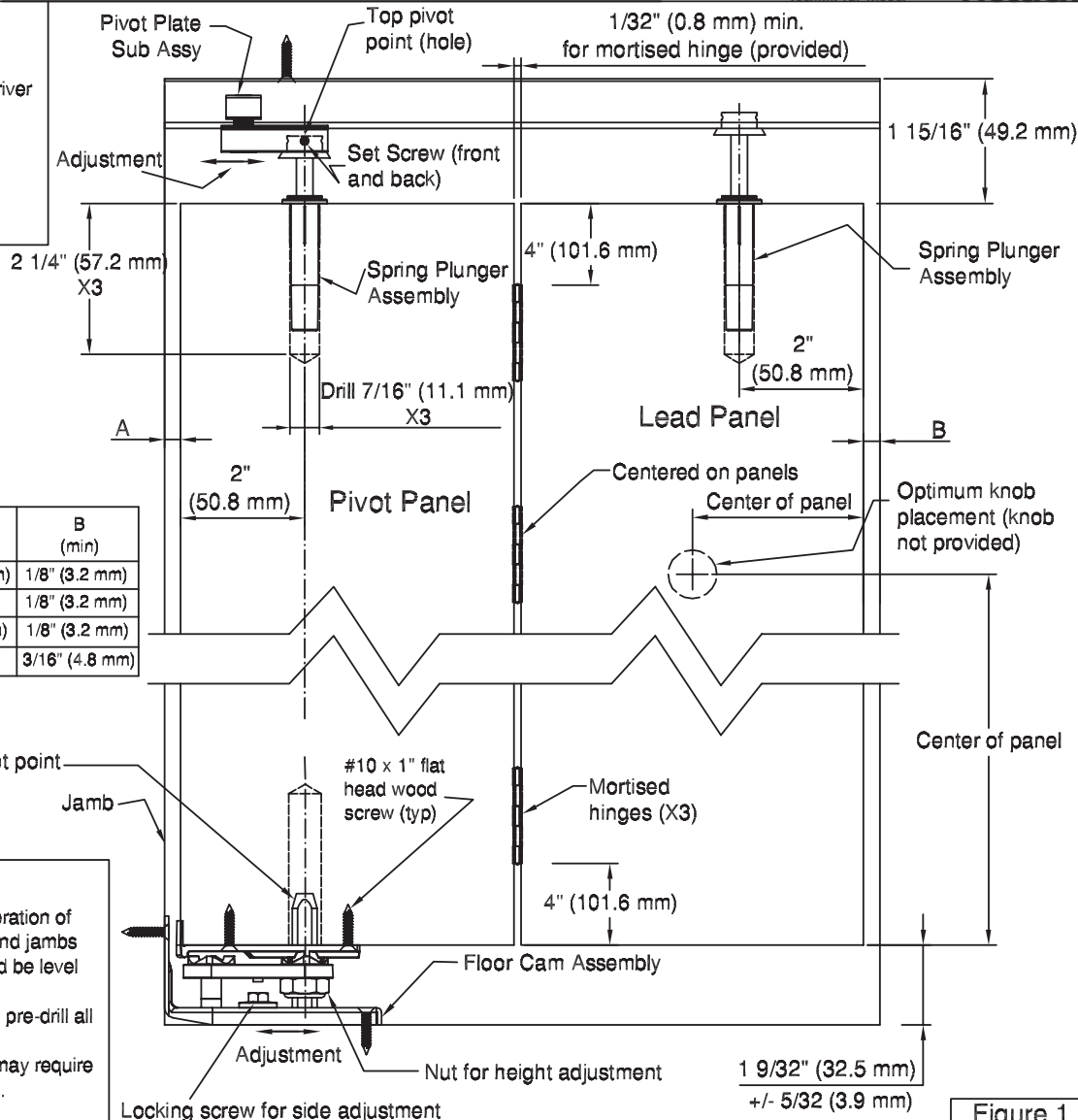
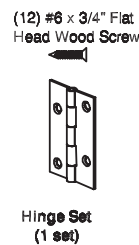
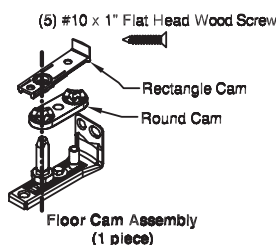


Figure 1

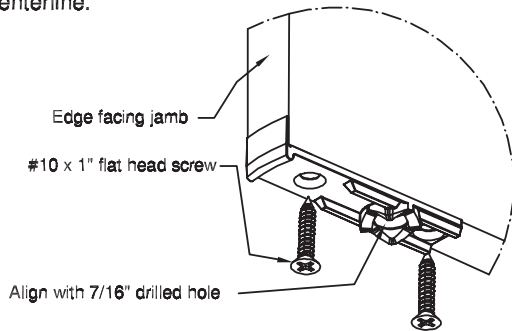


WARNING

The Grant 25 bi-folding door hardware system is designed to support folding panels up to 25 lbs (11 kg) per panel. The door system must be installed by attaching it to a framing member that is designed to support the total weight of door panels plus the weight of the door system ("Total Support Weight"). Improper installation of the door system, including, but not limited to, the use of unauthorized hardware, or the failure to install the door system by attaching it to a framing member that is designed to support the Total Support Weight, could result in serious injury or death. **DO NOT INSTALL THE DOOR SYSTEM TO A FRAMING MEMBER THAT IS NOT DESIGNED TO SUPPORT AT LEAST THE TOTAL SUPPORT WEIGHT. INSTALL THE DOOR SYSTEM ONLY IN THE MANNER SET FORTH IN THE DOOR SYSTEM'S DOOR HARDWARE INSTALLATION INSTRUCTIONS.**

1. Prepare pivot panel (first panel)

Drill top and bottom pivot holes in pivot panel on centerline (per Fig. 1, using the rectangle cam to mark the center of the holes). Attach rectangle cam to the bottom of the panel on centerline.



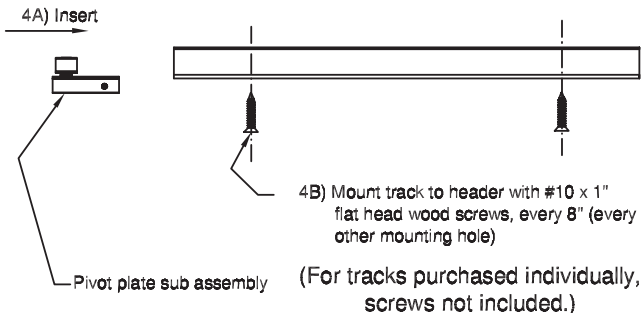
2. Prepare lead panel (second panel)

Drill hole in top of lead panel on centerline (Per Fig. 1).

3. Hinge panels

Hinge pivot and lead panel together using #6 x 3/4 inch flat head screws. Space hinges per Fig. 1.

4. Install track



5. Install hardware

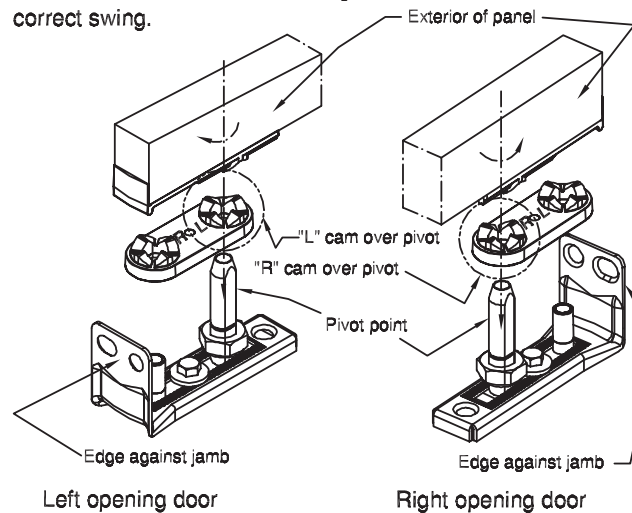
- Position top pivot point hole of pivot plate sub assembly at the correct dimension from the jamb (per Fig. 1) and secure using 5/32 inch hex key.
- Adjust lower pivot point of floor cam assembly to correct dimension from the jamb (per Fig. 1). Making sure the top pivot point and lower pivot point are plumb, mount floor cam assembly using (3) #10 x 1 inch flat head screws.

Toutes les instructions en français et espagnol sont disponibles sur nos sites Internet:
www.grantdoorhardware.com ou www.hettichamerica.com

Para ver las traducciones al español o al francés de estas instrucciones, visite nuestro sitio web
www.grantdoorhardware.com o www.hettichamerica.com

6. Orientation of round cam for "stay open / stay close" mechanism

Orient the round cam and rectangle cam as shown for the correct swing.

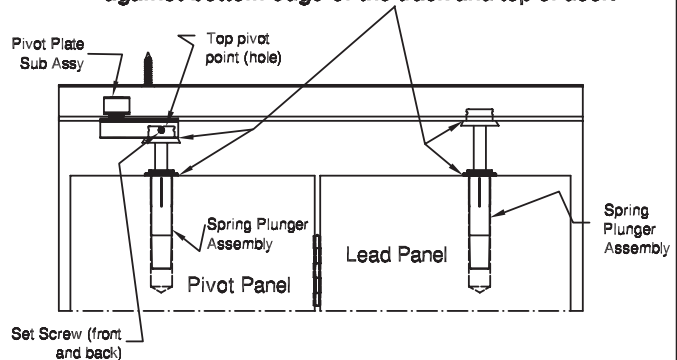


7. Install panels

- Install one spring plunger into top (drilled) hole of pivot panel and one spring plunger into top (drilled) hole of lead panel.
- Place hole in bottom of pivot panel over the floor cam stud.
- Place pivot panel spring plunger into the top pivot plate hole. Install spring plunger of lead panel into track. Adjust door height to be sure that spring plungers are seated correctly as shown below.

****IMPORTANT****

To ensure safe operation, finished door height adjustment must ensure that the flanges of pivot panel spring plunger assembly seat against bottom edge of pivot plate sub assembly and top of door, and that the flanges of lead panel spring plunger assembly seat against bottom edge of the track and top of door.



- Secure spring plunger assembly at top pivot point with (2) set screws using a 1/16 inch hex key (set screws should "dig into" the plastic end of the spring plunger assembly to secure).
- Adjust panels to optimize operation via adjustment nut of floor cam assembly and side adjustment of floor cam assembly. After adjustments are made, tighten locking screw for side adjustment of floor cam assembly.
- Mount door knob as shown on lead panel.