

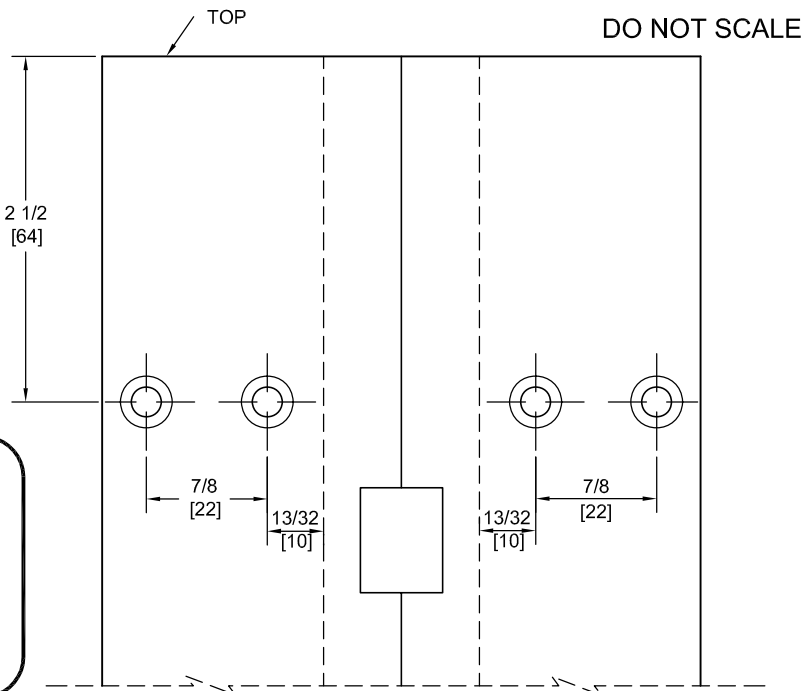
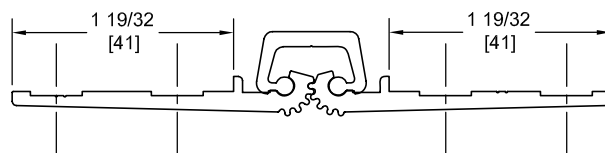
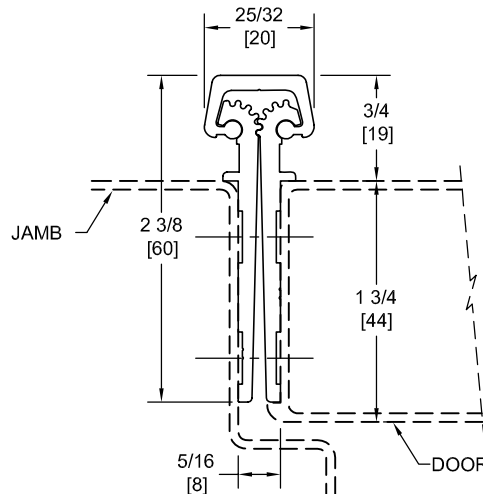
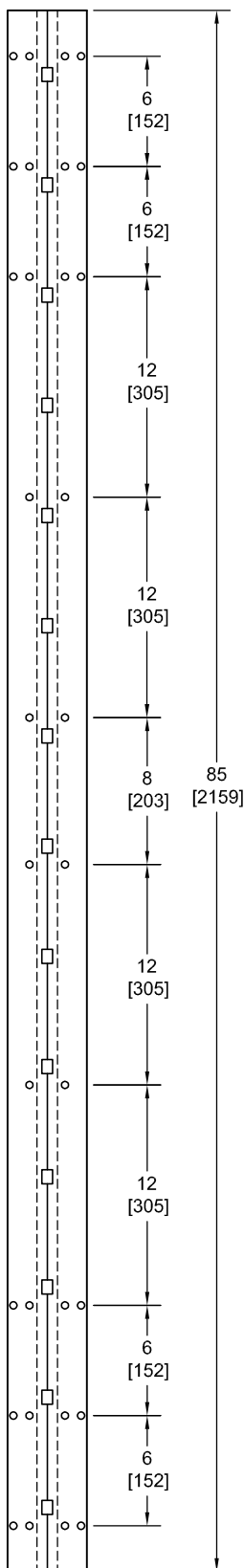
KFM85

TEMPLATE FULL MORTISE CONTINUOUS GEARED ALUMINUM HINGE FOR KAWNEER



Fire Rated
Classified & Listed to
meet the requirements of
Standards UL10B, UL10C,
UBC7-2, Part I & BS476

POSITIVE PRESSURE



**** CAUTION ****
Due To Frame
Installation
Variations,
Pre-drilling
For Fasteners
Is Not
Recommended

PEMKO Template Full Mortise Continuous Geared Aluminum Hinges KCFM85/KDFM85 are made to conform to this drawing.

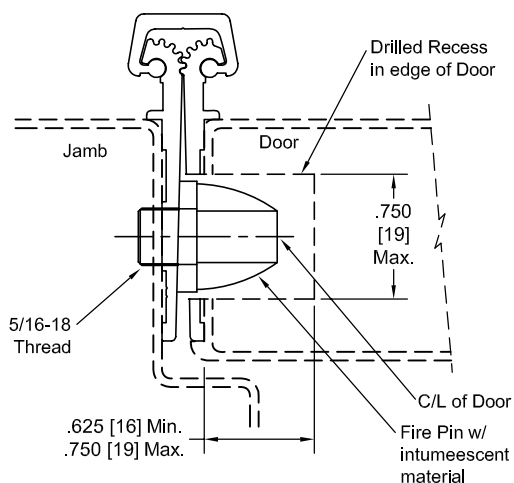
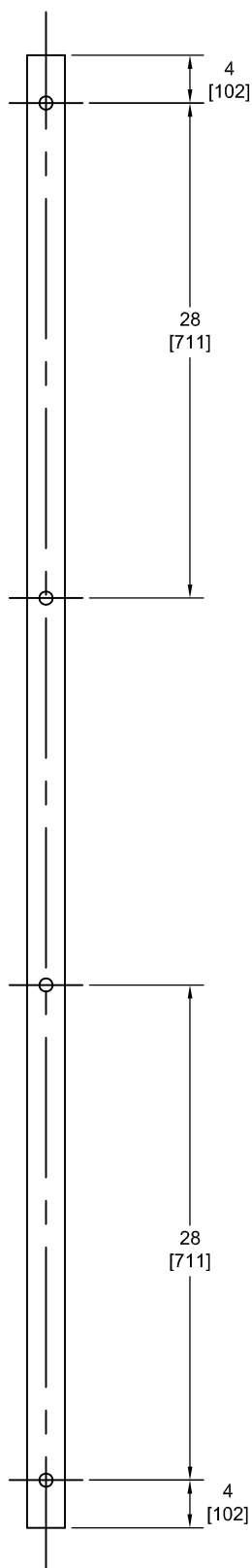
PEMKO KCFM85/KDFM85 hinges can be supplied with Electric Functions - See Electrical Application Section.

Machine Screw Size - No. 12-24 x 7/16 FHUC Thread-forming.

PEMKO Continuous Geared Aluminum Hinges are Listed for fire applications up to 90 minutes without special preparation; for 3 hour openings using hollow metal doors and hollow metal frames on Masonry/Drywall, Fire Pins (supplied separately) must be used.

Manufacturer reserves the right to make changes without formal notice.

Fire Pin Application



Concealed Circuit (CC) Application

SEE ELECTRICAL APPLICATION SECTION
IN TECHNICAL MANUAL

Magnetic Monitor (MM) Application

SEE ELECTRICAL APPLICATION SECTION
IN TECHNICAL MANUAL

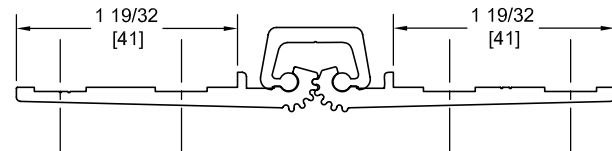
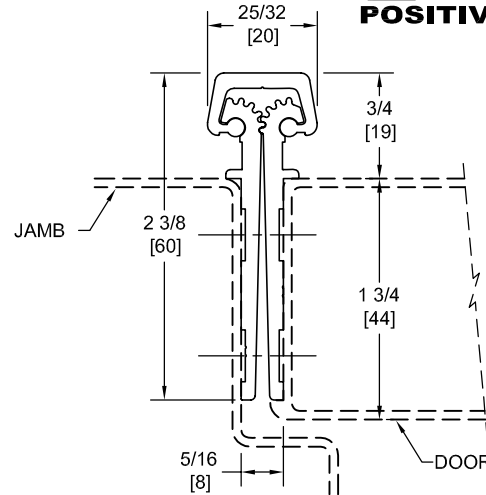
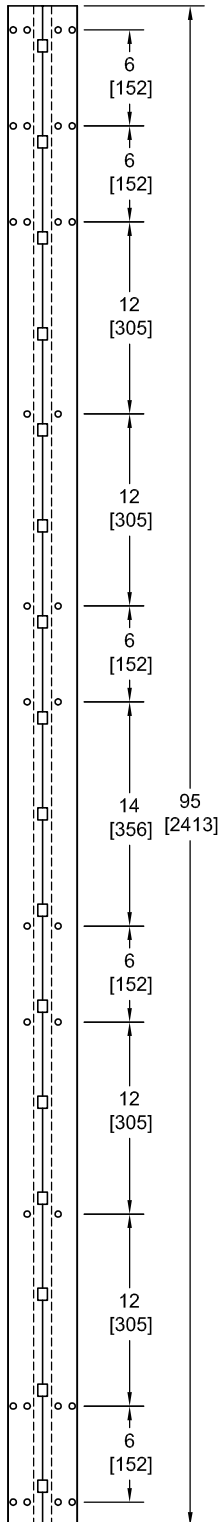
KFM95

TEMPLATE FULL MORTISE CONTINUOUS GEARED ALUMINUM HINGE FOR KAWNEER

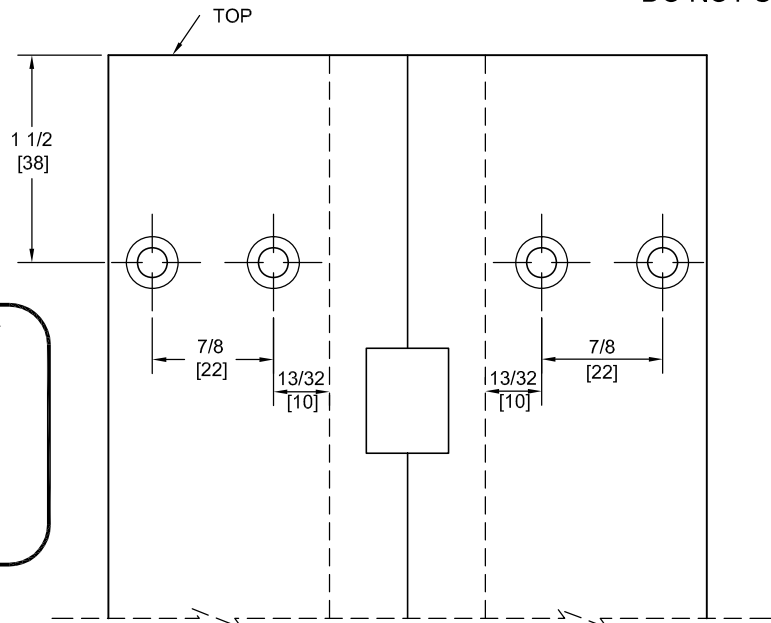


Fire Rated
Classified & Listed to
meet the requirements of
Standards UL10B, UL10C,
UBC7-2, Part I & BS476

POSITIVE PRESSURE



DO NOT SCALE



**** CAUTION ****
Due To Frame
Installation
Variations,
Pre-drilling
For Fasteners
Is Not
Recommended

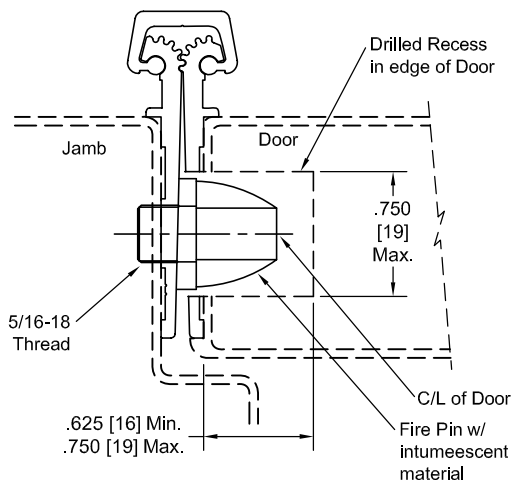
PEMKO Template Full Mortise Continuous Geared Aluminum Hinges KCFM95/KDFM95 are made to conform to this drawing.

PEMKO KCFM95/KDFM95 hinges can be supplied with Electric Functions - See Electrical Application Section.

Machine Screw Size - No. 12-24 x 7/16 FHUC Thread-forming.

PEMKO Continuous Geared Aluminum Hinges are Listed for fire applications up to 90 minutes without special preparation; for 3 hour openings using hollow metal doors and hollow metal frames on Masonry/Drywall, Fire Pins (supplied separately) must be used.

Manufacturer reserves the right to make changes without formal notice.



Magnetic Monitor (MM) Application

SEE ELECTRICAL APPLICATION SECTION
IN TECHNICAL MANUAL

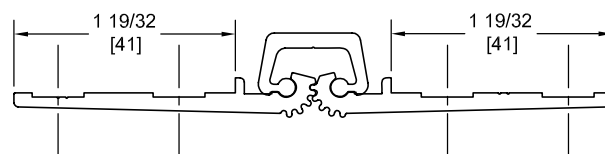
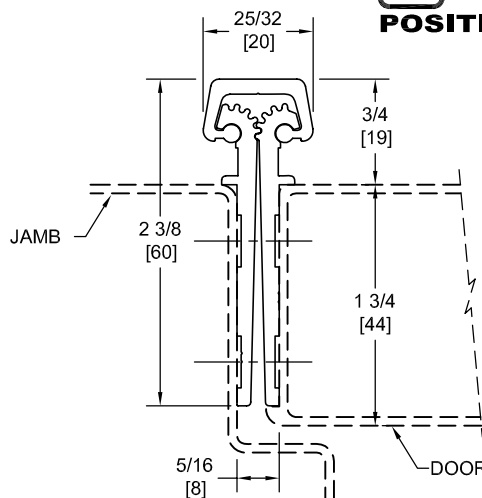
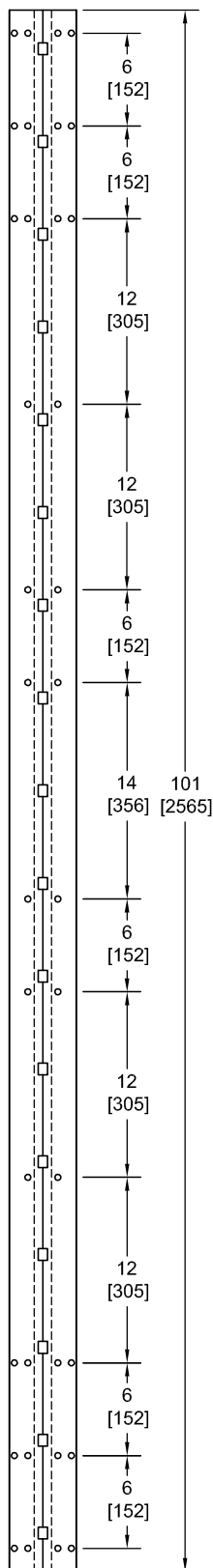
KFM101

TEMPLATE FULL MORTISE CONTINUOUS GEARED ALUMINUM HINGE FOR KAWNEER



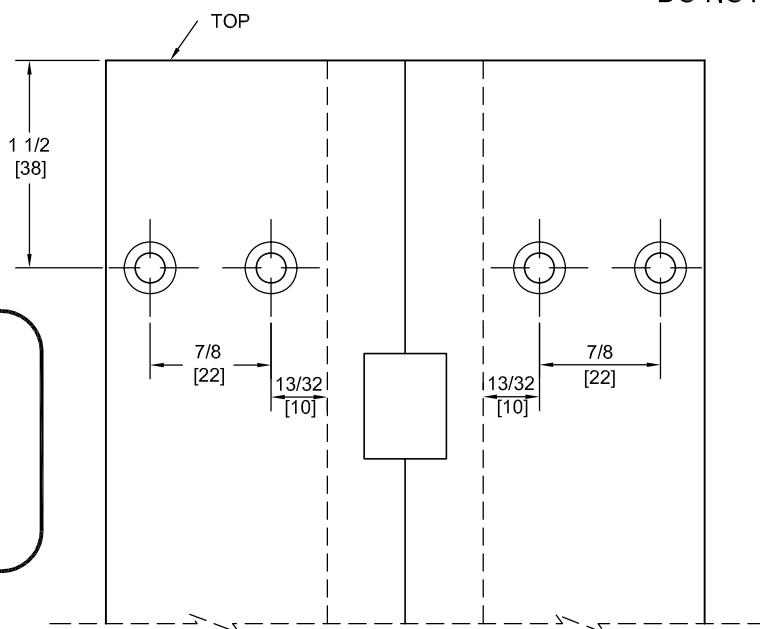
Fire Rated
Classified & Listed to
meet the requirements of
Standards UL10B, UL10C,
UBC7-2, Part I & BS476

POSITIVE PRESSURE



DO NOT SCALE

**** CAUTION ****
Due To Frame
Installation
Variations,
Pre-drilling
For Fasteners
Is Not
Recommended



PEMKO Template Full Mortise Continuous Geared Aluminum Hinges KCFM101/KDFM101 are made to conform to this drawing.

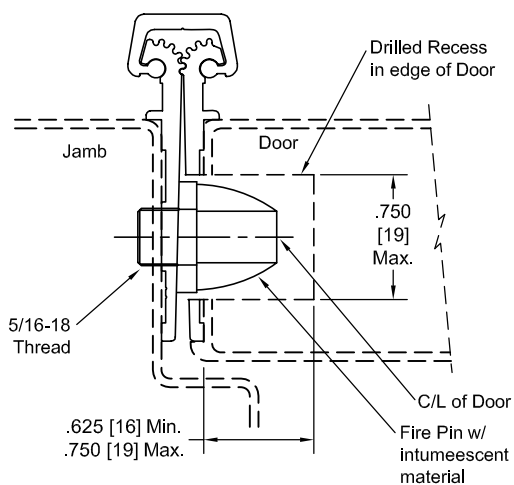
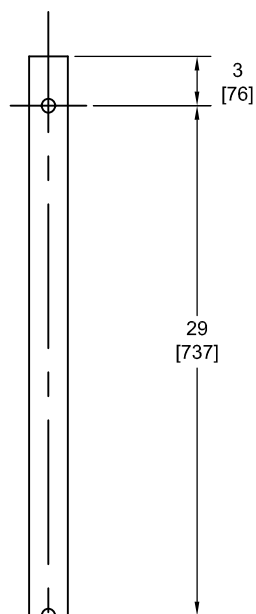
PEMKO KCFM101/KDFM101 hinges can be supplied with Electric Functions - See Electrical Application Section.

Machine Screw Size - No. 12-24 x 7/16 FHUC Thread-forming.

PEMKO Continuous Geared Aluminum Hinges are Listed for fire applications up to 90 minutes without special preparation; for 3 hour openings using hollow metal doors and hollow metal frames on Masonry/Drywall, Fire Pins (supplied separately) must be used.

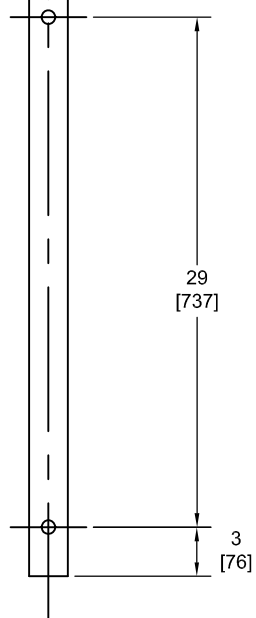
Manufacturer reserves the right to make changes without formal notice.

Fire Pin Application



Concealed Circuit (CC) Application

SEE ELECTRICAL APPLICATION SECTION
IN TECHNICAL MANUAL



Magnetic Monitor (MM) Application

SEE ELECTRICAL APPLICATION SECTION
IN TECHNICAL MANUAL

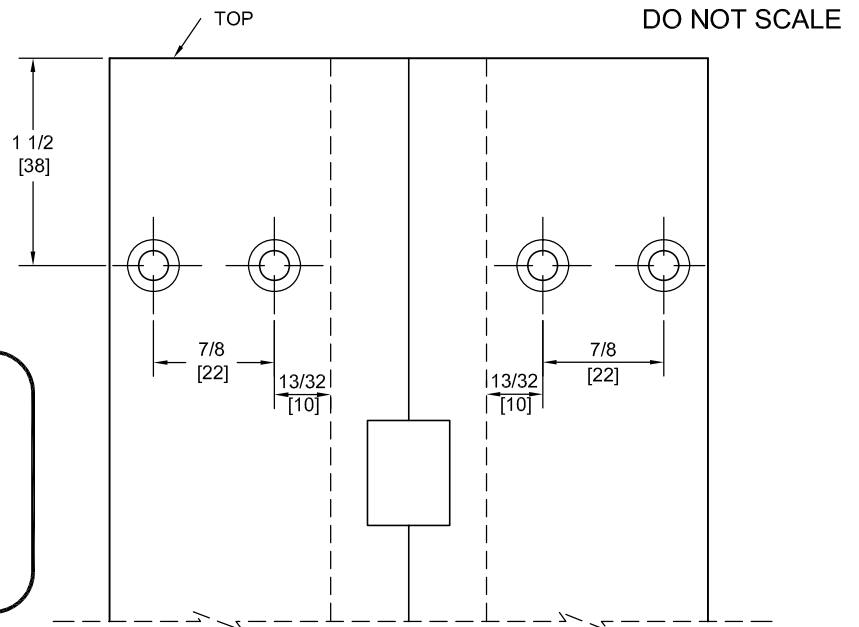
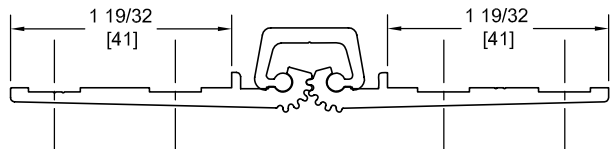
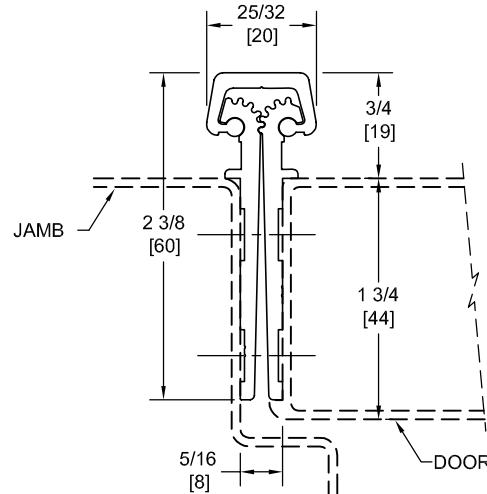
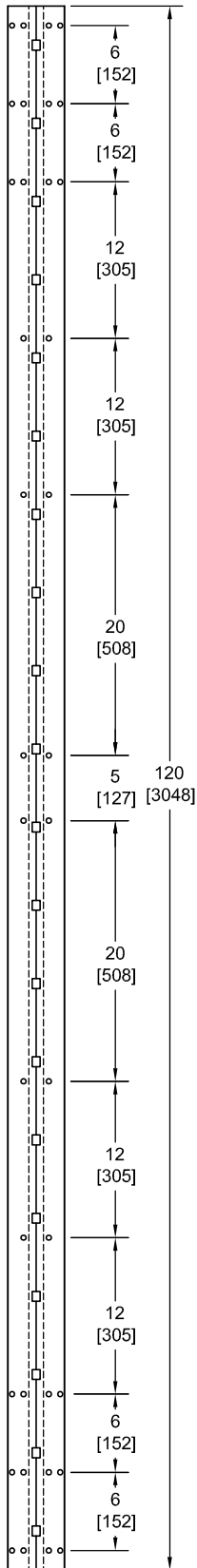
KFM120

TEMPLATE FULL MORTISE CONTINUOUS GEARED ALUMINUM HINGE FOR KAWNEER



Fire Rated
Classified & Listed to
meet the requirements of
Standards UL10B, UL10C,
UBC7-2, Part I & BS476

POSITIVE PRESSURE



**** CAUTION ****
Due To Frame
Installation
Variations,
Pre-drilling
For Fasteners
Is Not
Recommended

PEMKO Template Full Mortise Continuous Geared Aluminum Hinges KCFM120/KDFM120 are made to conform to this drawing.

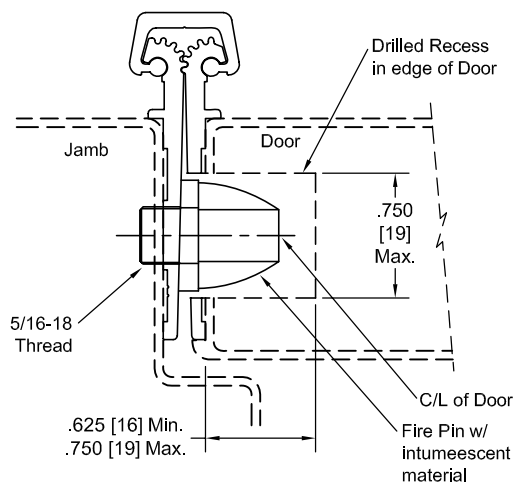
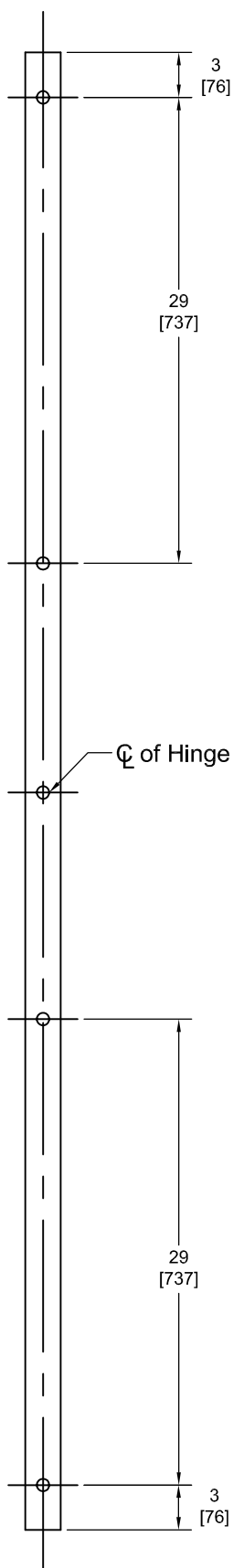
PEMKO KCFM120/KDFM120 hinges can be supplied with Electric Functions - See Electrical Application Section.

Machine Screw Size - No. 12-24 x 7/16 FHUC Thread-forming.

PEMKO Continuous Geared Aluminum Hinges are Listed for fire applications up to 90 minutes without special preparation; for 3 hour openings using hollow metal doors and hollow metal frames on Masonry/Drywall, Fire Pins (supplied separately) must be used.

Manufacturer reserves the right to make changes without formal notice.

Fire Pin Application



Concealed Circuit (CC) Application

SEE ELECTRICAL APPLICATION SECTION
IN TECHNICAL MANUAL

Magnetic Monitor (MM) Application

SEE ELECTRICAL APPLICATION SECTION
IN TECHNICAL MANUAL