

Architectural Door Accessories

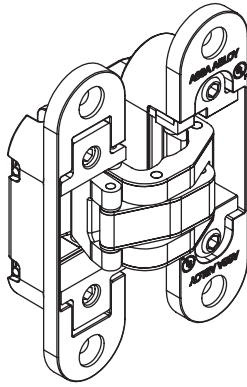


TRADEMARK
HARDWARE

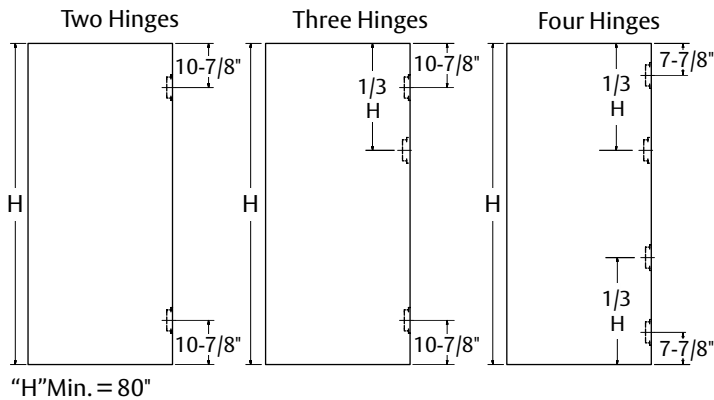
ASSA ABLOY

McKinney 80 Concealed Hinge 3D Adjustable

Experience a safer
and more open world



Hinge Arrangement



Load Capacity

See chart for minimum number of hinges required based on correct adjustment (all hinges carrying load), door width and door weight.

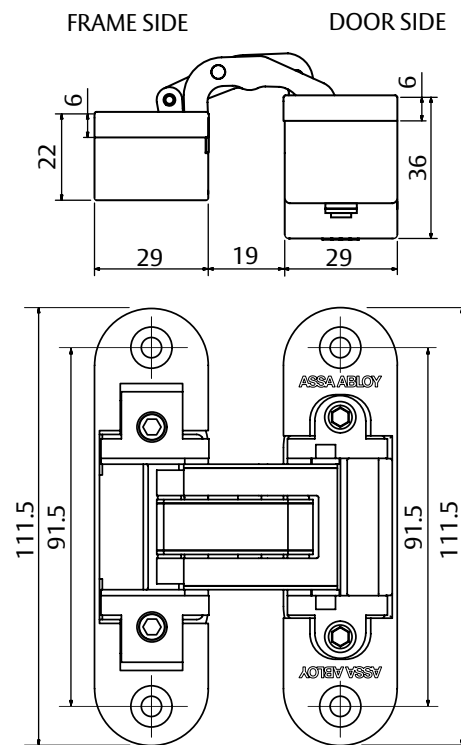
Door height minimum is 80".

Door thickness minimum is 1-3/8".

Note: Hinge spacing does not effect load capacity. The first door should always be checked before preparing more doors, if any. When installing with a door closer, at least 3 hinges are required, and reduce maximum door weight in chart by 30%.

Hinges	Door Width			
	32"	36"	42"	48"
2	185 lb	176 lb	143 lb	132 lb
3	211 lb	198 lb	160 lb	149 lb
4	233 lb	220 lb	171 lb	158 lb

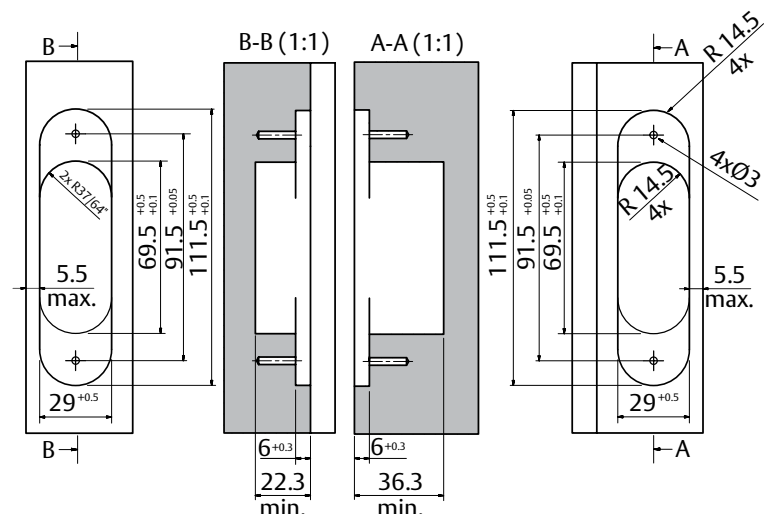
Hinge Dimensions (millimeters)



Milling Dimensions (millimeters)

Frame Side

Door Side

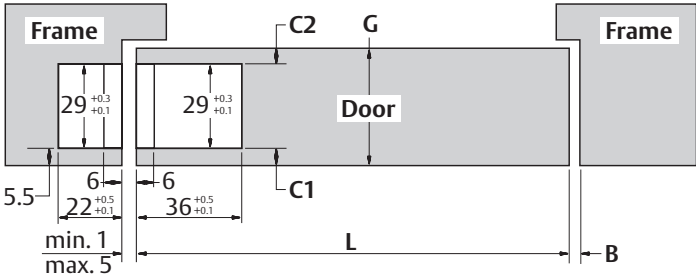


The ASSA ABLOY Group is the global leader in access solutions. Every day we help people feel safe, secure and experience a more open world.



ASSA ABLOY

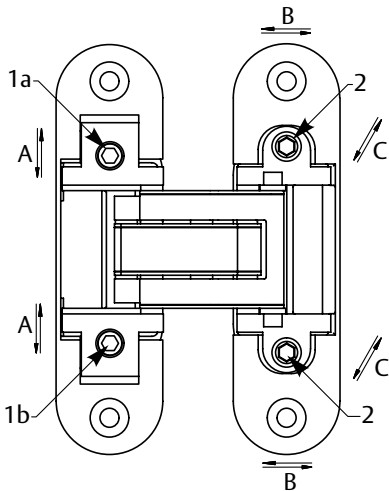
Hinge Position In Relation to Required Door and Frame Dimensions (millimeter)



"G" Thickness of Door	C1 (mm)	C2 (mm)	"L" Width of Door			
			32"	36"	42"	48"
			"B" Minimum Gap (mm)			
1-3/8"	3	3	2	2	2	2
1-3/4"	5.5	10	2	2	2	2
2"	5.5	16.3	3	3	3	3
2-1/4"	5.5	22.7	4	4	3	3

Installation

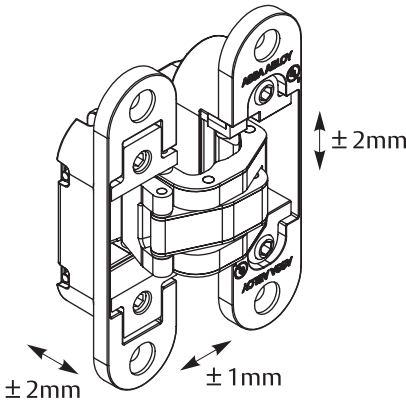
1. Insert each hinge section marked "door" into door sockets created in milling. Hinges should be flush against door edge surface.
2. Secure hinge sections with two (2) M5-0.8x20mm metal screws or 35mm PHWS wood screws provided in screw packet.
3. Set door on frame by inserting each loose hinge section into socket created in milling.
4. Secure each hinge with two (2) M5-0.8x20mm metal screws or 35mm PHWS wood screws provided in screw packet.
5. Make adjustments.



Adjustment

Adjustments to hinge are made with a 4mm Allen wrench. *All hinges should carry load for proper installation.*

- A. Vertical Adjustment (range ± 2 mm):**
Make sure that top adjustment screw (1a) is even with front surface of hinge. If it is not, unscrew it for this position. Adjust hinge by turning bottom adjustment screw (1b). After adjusted, tighten top adjustment screw (1a).
- B. Depth Adjustment (Range ± 1 mm)**
- C. Horizontal Adjustment (Range ± 2 mm)**
Depth adjustment and horizontal adjustment take place simultaneously. Adjust hinge by alternately turning both screws (2).



ARCHITECTURAL DOOR ACCESSORIES™
Markar | McKinney | Pemko | Rockwood

ASSA ABLOY Opening Solutions
Architectural Accessories Group
Berlin, CT 06037

Copyright © 2018, 2019, ASSA ABLOY Accessories and Door Controls Group, Inc. All rights reserved. Reproduction in whole or in part without the express written permission of ASSA ABLOY Accessories and Door Controls Group, Inc. is prohibited.