







**Trademark
HARDWARE**

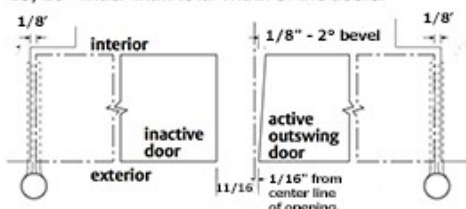
INSTALLATION GUIDE

Installation Kit:

-  (6)- #8 x 1 FHMS
For attaching astragal to door edge.
-  (2)- #6 x 1/2 FHMS
For attaching top bolt strike plate.
-  (2)- #6 x 1/2 FHMS
For attaching strike plates.
-  (2)- Top & Bottom Bolt Strike Plates

1. Determine door and/or frame size.
If the frame is finished- A space for the Astragal must be provided by trimming the edge of the inactive door. (See fig.1)

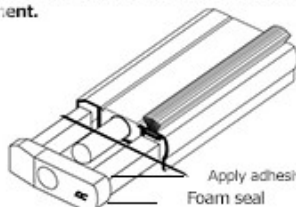
If frame has not been fabricated- it can be sized so that door edge need not be trimmed except to remove bevel from inactive door. Construct frame 15/16" wider than total width of the doors.



2. Deadbolt preparation and reinforcement.
Locate deadbolt position and drill the edge of inactive door to accept deadbolt, in accordance with the lockset manufacturers instructions before installing the Astragal. If a deadbolt strike reinforcing plate is to be installed, locate, mortise, and attach in accordance to mfr's spec's.

3. Cut to length and notch (Important: Cut-off bottom only, do not cut top except to notch) Cut Astragal to length equal to door height. Notch top to accommodate perimeter weatherseal.

4. Insert bottom seal.
Insert seal into bottom end of Astragal case. Seals are marked with an "R" or "L" to designate hand (see fig.2). Apply a small amount of adhesive on the front edge of the Astragal where it contacts the seal. Recommended adhesives are 3M No. 4475 clear plastic adhesive or 3M No. 1300 rubber and gasket cement.



5. Attach astragal to door edge.
Slide top and bottom bolts toward center to expose top and bottom mounting screw locations. Position Astragal on door edge and tightly against outside door face; fasten with the (6) No. 8 x 1" flat head sheet metal screws.

6. Attach strike plates.
Fasten latch bolt and deadbolt strike plates (those furnished with the locksets) to the retainers with the (2) #6 x 1/2" flat head machine screws provided. Strike plates are adjustable vertically for centerline height and horizontally for proper latching position. See fig. 4.

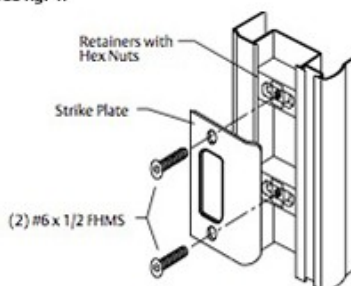


Figure 4.

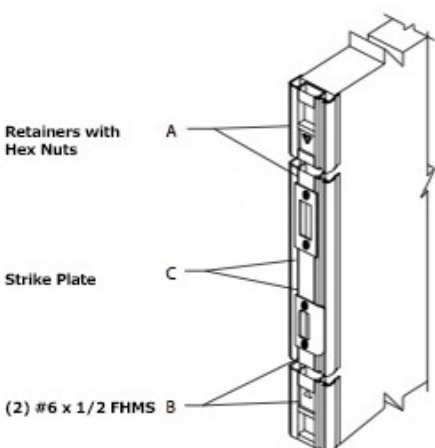
7. Top & bottom bolt strike plates.
Mark location on header and drill 7/16" diameter hole, one inch deep to receive top bolt. Attach top bolt strike plate with the (2) #6 x 1/2" flat head sheet metal screw. Mark and drill threshold for bottom bolt. (Note: be sure door face is plumb when marking this location; i.e. door warpage.) Optional- install bottom strike plate.

8. Install snap-in covers.

A. Cut a piece of vinyl snap-in cover to fit from the top of the deadbolt strike plate to the point of the arrow on the upper bolt pull when in the locked position.

B. Cut a piece to fit from the bottom of the latch bolt strike plate to the point of the arrow on the lower bolt pull when in the locked position.

C. Cut a piece to fit between the two strike plates.

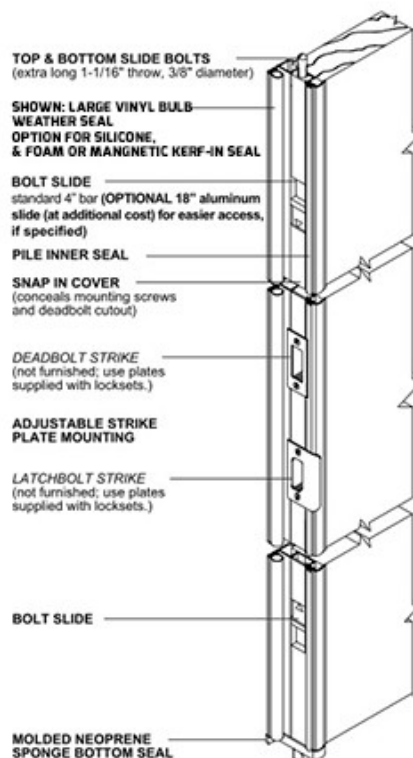


9. Attach cover to door.
Trim to length equal to door height. Cut from top and bottom, as required, to best position cutouts for deadbolt and latchbolt. Fasten with #8 x 1" flat head screws.

Tools Required



SLIDE BOLT LOCKING MEETING STILE



• Vinyl snap-in-cover strip conceals cutout and cover mounting screws.

• Features four-way adjustable strike plate mounting.

• Features a pile seal at inner door edge and a molded sponge neoprene bottom seal.