



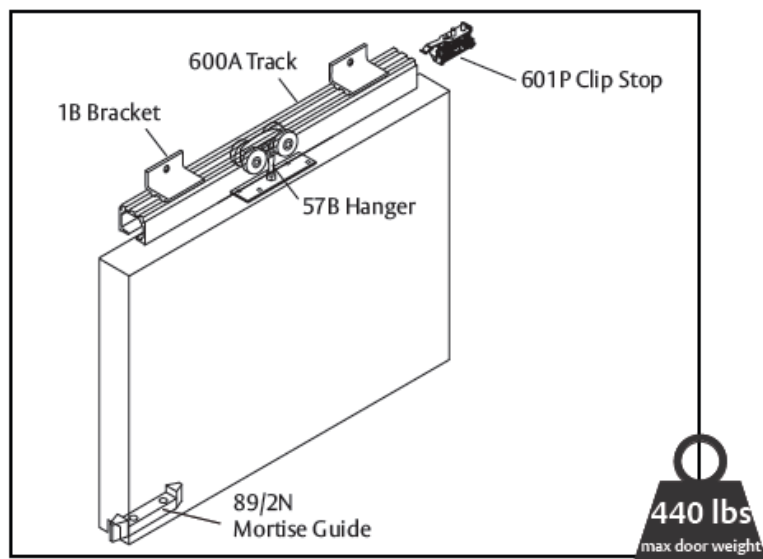
**TRADEMARK
HARDWARE**

WORLD OF QUALITY HARDWARE

INSTALLATION GUIDE

Door Leaf Capacity - Up to 440 lbs.

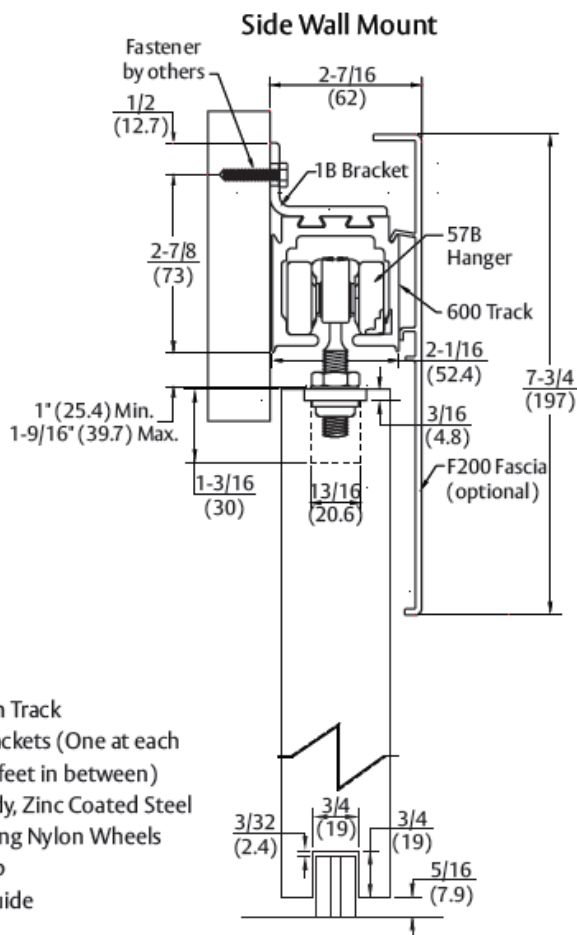
Manufactured by
HENDERSON



Part Number	Material	Track Length	Door Width
H440A-SW/6	Aluminum	72"	36"
H440A-SW/8	Aluminum	96"	48"
H440A-SW/10	Aluminum	120"	60"
H440A-SW/12	Aluminum	144"	72"

H440A-SW Kits Include:

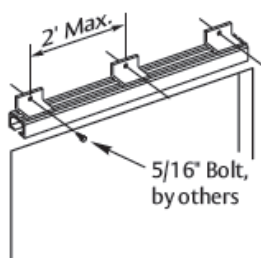
- 1 ea 600A Mill Finished Aluminum Track
- 1B Side Wall Mount Track Brackets (One at each end and no more than three feet in between)
- 2 ea 57B Hangers: Gray Nylon Body, Zinc Coated Steel Pendant Bolt, Steel Ball Bearing Nylon Wheels
- 2 ea 601P Nylon In-Track Clip Stop
- 1 ea 89/2N Gray Nylon Mortise Guide



1. Secure track.

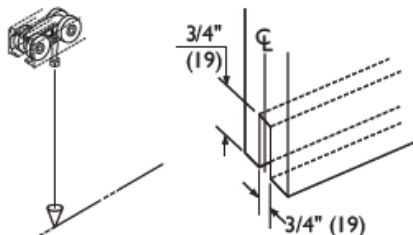
Secure track at each end. Inward brackets should be no more than 2' (61m) from each end and centered on track.

Ensure track is plumb and level.

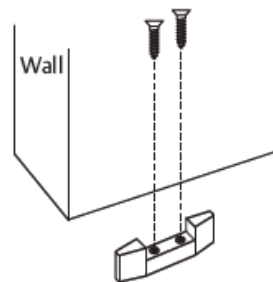


2. Mortise door for door guide.

Attach a plumb line to hanger. Remove one end bracket. Place hanger inside track. Using plumb line, mark the centerline of door guide.



3. Fit door guide to floor.



www.tmhardware.com



845-388-1300



845-388-1388



sales@tmhardware.com



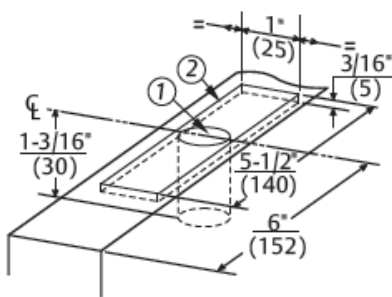
**TRADEMARK
HARDWARE**

WORLD OF QUALITY HARDWARE

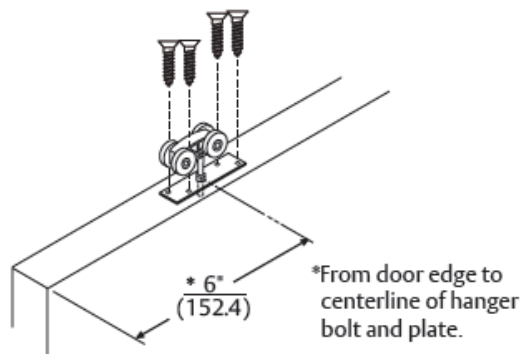
INSTALLATION GUIDE

4. Prepare top of door for hanger hardware.

- ① Drill $1\frac{3}{16}"$ (21) dia. x $1\frac{3}{16}"$ (30) deep hole 6" (152) from door edge to centerline of hole and centered in thickness of door.
- ② Route door for $\frac{3}{16}"$ (5) thick, $5\frac{1}{2}"$ (140) long, and 1" (25) wide plate centered on centerline of hole and thickness of door.

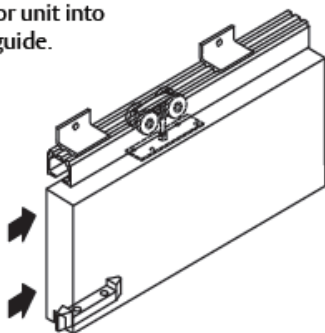


5. Attach hangers to doors.

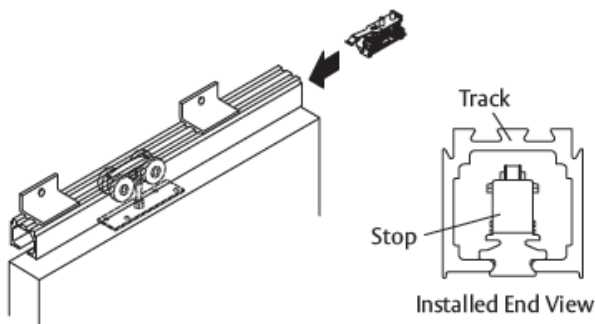


6. Hang door.

Slowly guide complete door unit into track using installed floor guide.



7. Position and secure clip stops.

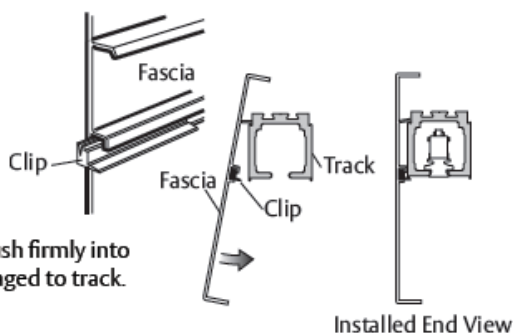


8. Optional fascia installation:

1. Insert polymer clips provided into fascia in correct orientation.

Ensure that clips are placed approximately 20" (500mm) intervals along length of fascia.

2. Hook fascia onto track and push firmly into place. Ensure all clips are engaged to track.



IMPORTANT:

Visually check all bolts and screws; tighten if necessary.
If access door is installed, check operation.
Check operation of doors for ease.

- Door catches floor guide: Check that the track is level. Ensure that the track and floor guide are parallel to within $\pm \frac{1}{8}"$ (3).
- Door scrubs: Check that the door is level on hangers.
- Door moves while in operation: Check hangers are installed correctly.

SKU: H440A



www.tmhardware.com



845-388-1300



845-388-1388



sales@tmhardware.com