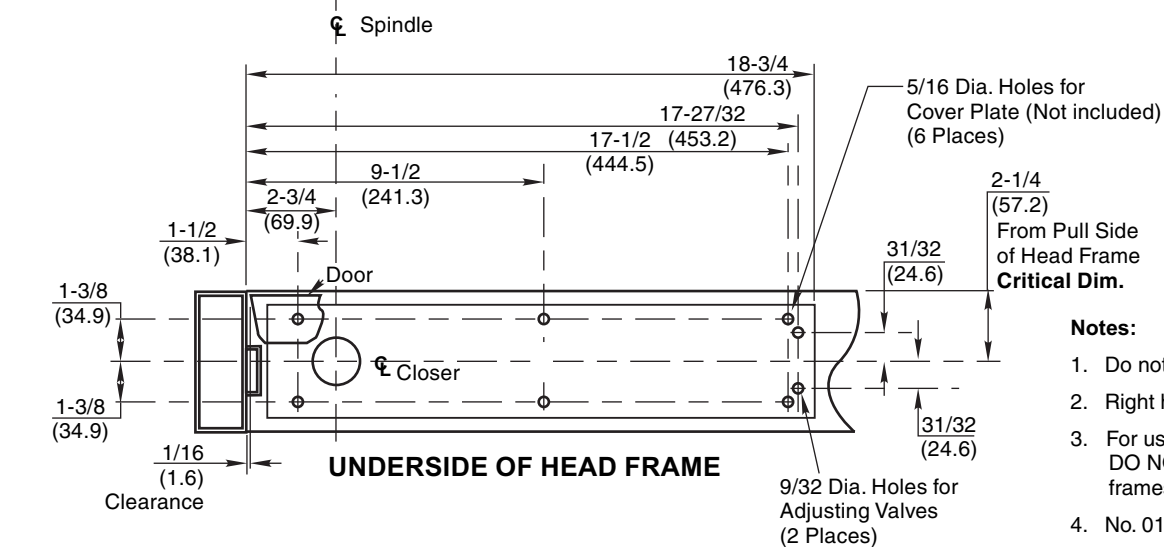
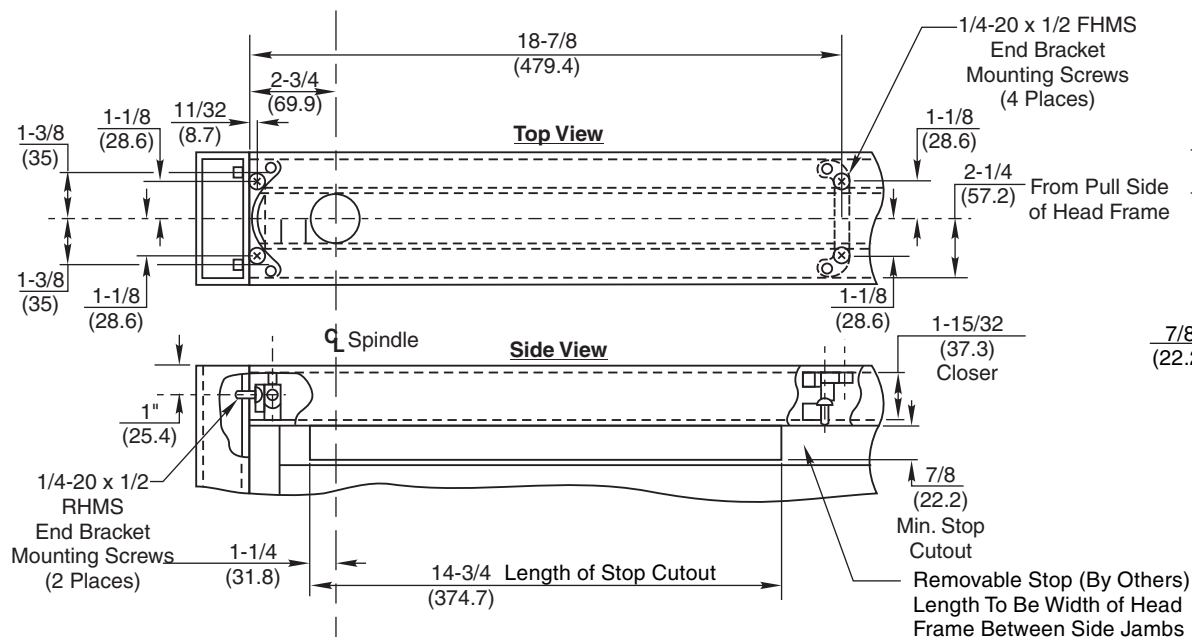
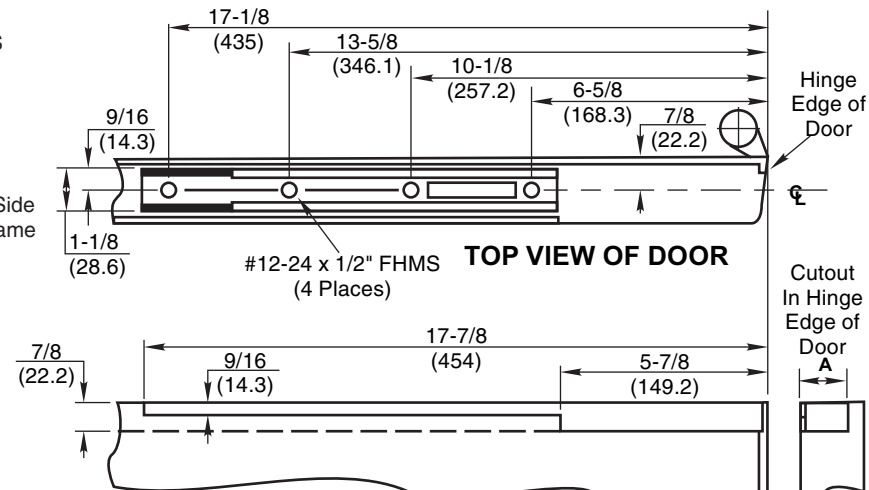


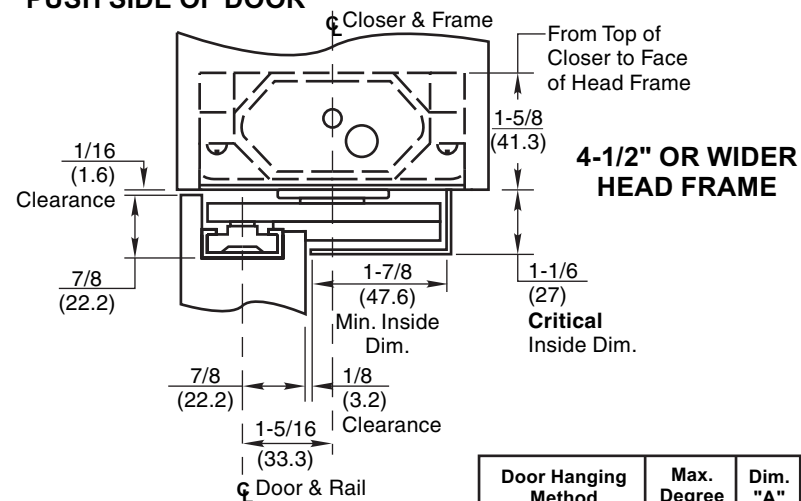
HEAD FRAME INSTALLATION



DOOR INSTALLATION



PUSH SIDE OF DOOR



1. Do not scale drawing.
2. Right hand shown.
3. For use on doors with a minimum 7/8" deep top web.
DO NOT use this template for 1-3/4" x 4" head frames.
4. No. 0163 mounting brackets included.
5. All dimensions are in inches (mm).

Door Hanging Method		Max. Degree	Dim. "A"
Butt Hinge	4 x 4	86° 106°	7/8
	4-1/2 x 4-1/2	88° 108°	7/8
	3/4 Offset Side Jamb Pivot	93° 113°	7/8 1-5/8