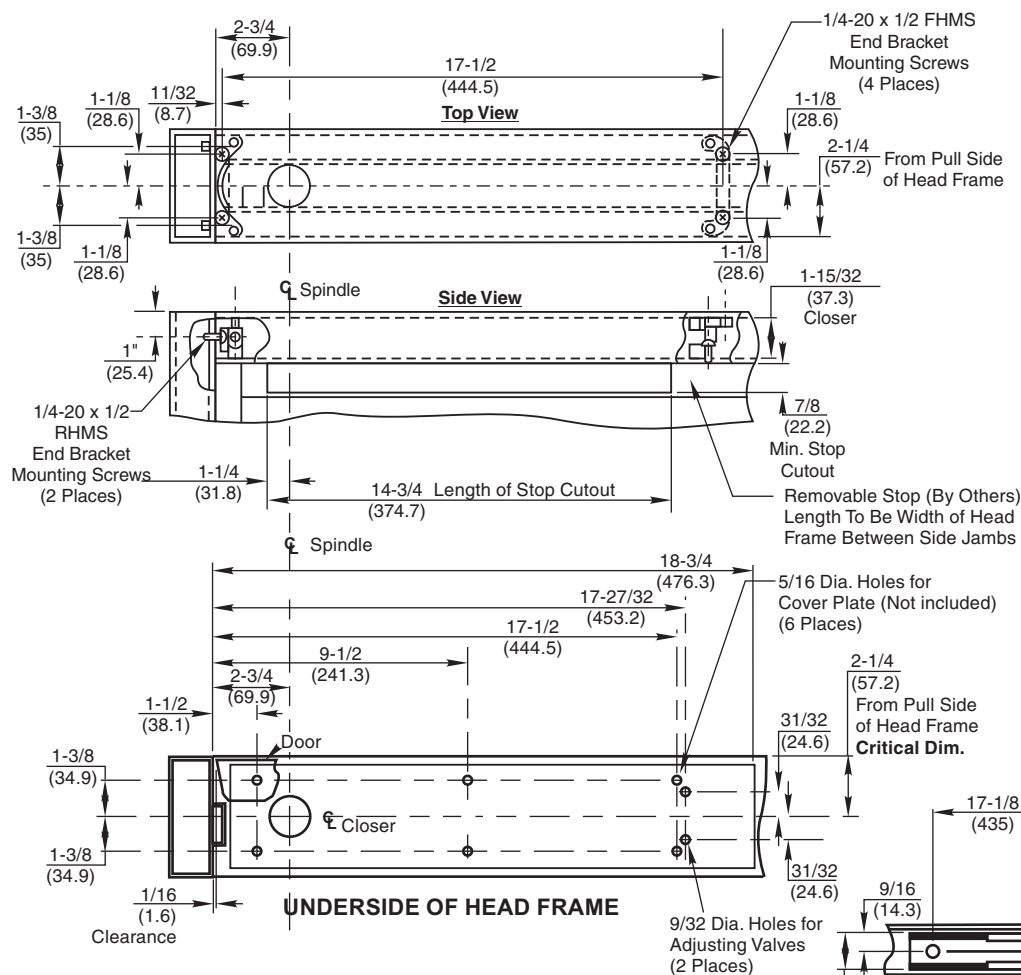




## Installation Instructions

IS-0700 (06-09)

## HEAD FRAME INSTALLATION

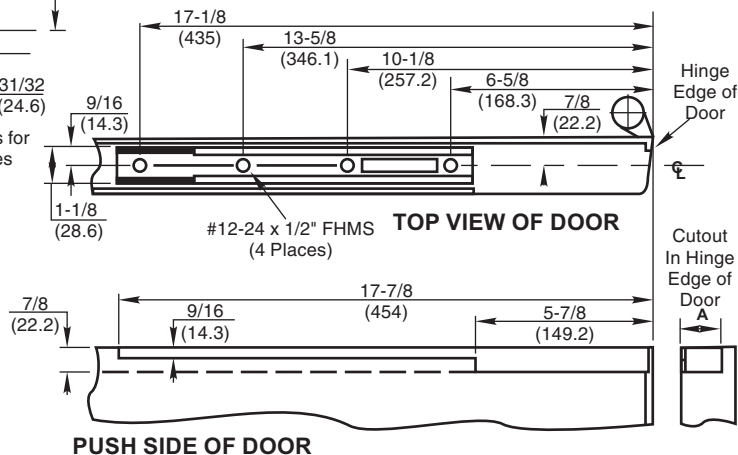


Door Hanging Method		Max. Degree	Dim. "A"
Butt Hinge	4 x 4	86° 106°	7/8
	4-1/2 x 4-1/2	88° 108°	7/8
3/4 Offset Side Jamb Pivot		93°	7/8
		113°	1-5/8

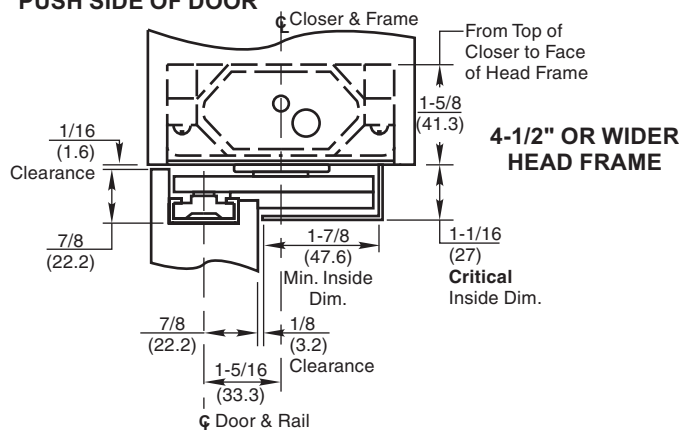
**Notes:**

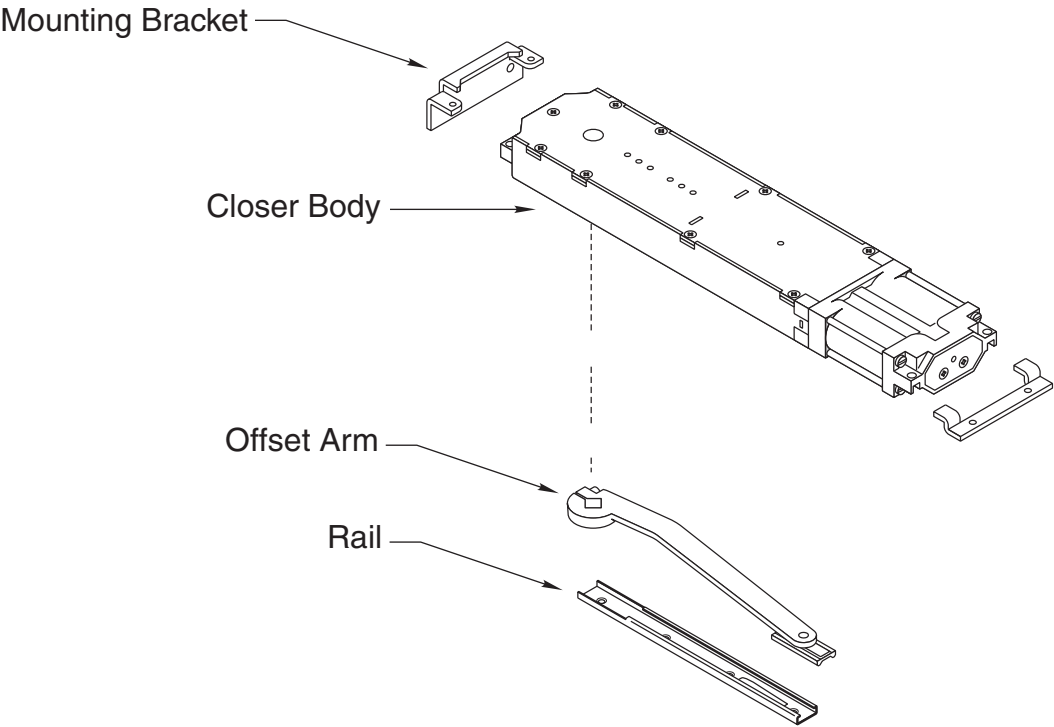
1. Do not scale drawing.
2. Right hand shown.
3. For use on doors with a minimum 7/8" deep top web.  
DO NOT use this template for 1-3/4" x 4" head frames.
4. No. 0163 mounting brackets included.
5. All dimensions are in inches (mm).

## DOOR INSTALLATION

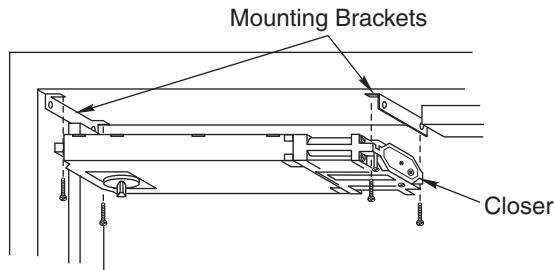


**PUSH SIDE OF DOOR**





1. Install the Mounting Brackets with (4) 1/4-20 UNC x 1/2 RHMS. Note: Mounting Brackets are NOT FOR USE ON WOOD FRAMES.



2. Install closer in head jamb by attaching closer with (4) 1/4"-20 x 3/4" RHMS.
3. Door Preparation
  - a. Prepare door for Arm Rail. See template for necessary door prep.)

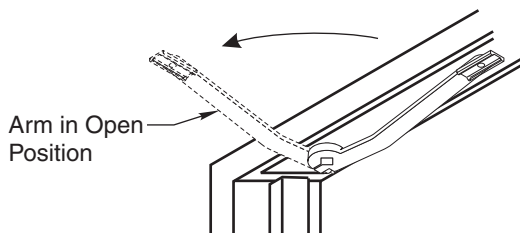
- b. Install Arm Rail in door using (4) 12 x 1-1/2 FHWS. Spring clip in rail must be toward hinge edge of door.

- c. Hang door. Pivots or butts not furnished with overhead closer package.

4. Installation of Arm
 

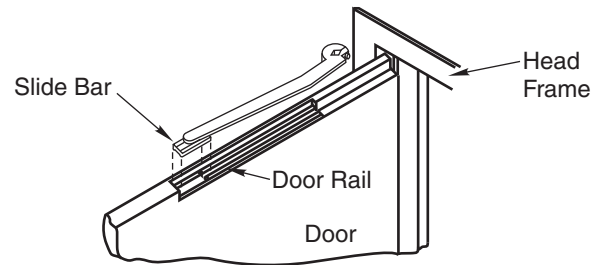
(Note: Close operating adjusting valve controlling correct door swing. Leave backcheck valve open.)

- a. Using arm as wrench, it is **IMPORTANT** that spindle of closer be turned to 90° or into hold-open position.



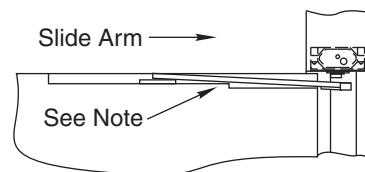
- b. Remove arm from spindle.

- c. Open door to 90° and insert Slide Bar of arm into Door Rail.



- d. **IMPORTANT:** Slide arm directly back toward hinge edge of door so that arm can be attached to spindle. Slight pressure will be required to override leaf spring in rail. Do NOT remove Slide Bar from rail.

- e. Pull arm down and under closer spindle. **CAUTION:** Care should be taken to avoid distorting corner of door cutout.



- f. Align arm hole and closer spindle. When properly aligned, arm should readily slide over closer spindle. **DO NOT FORCE.** Door may require a slight movement back and forth to aid in alignment of arm and closer spindle. After arm is assembled onto closer spindle tighten arm socket head cap screw (5/16" - 18 x 1-1/4") securely.

## 6. Adjust closing speed of door.

To decrease speed turn valve clockwise. To increase speed turn valve counter clockwise.

To increase backcheck, turn valve clockwise, to decrease backcheck turn valve counter clockwise.

