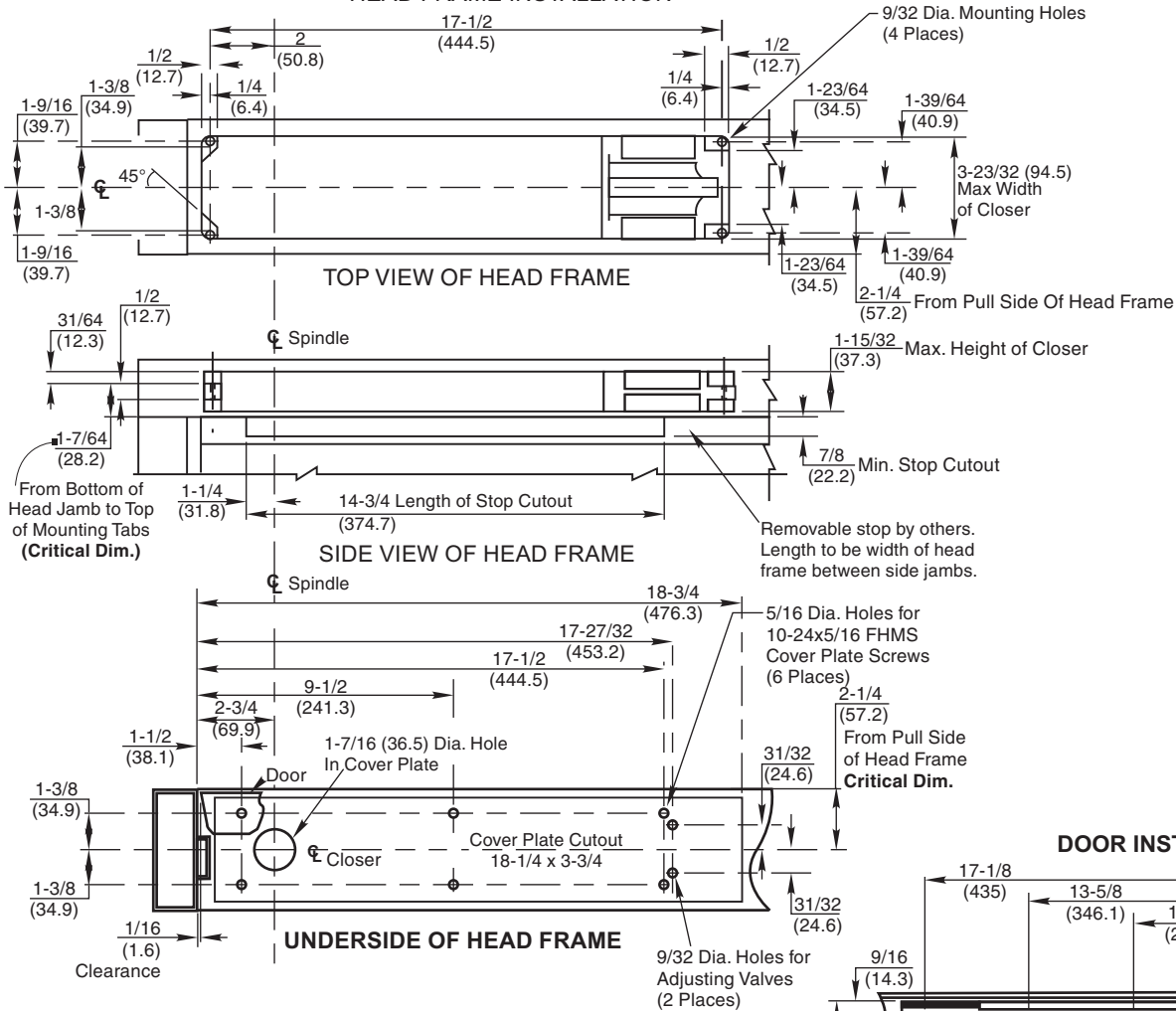


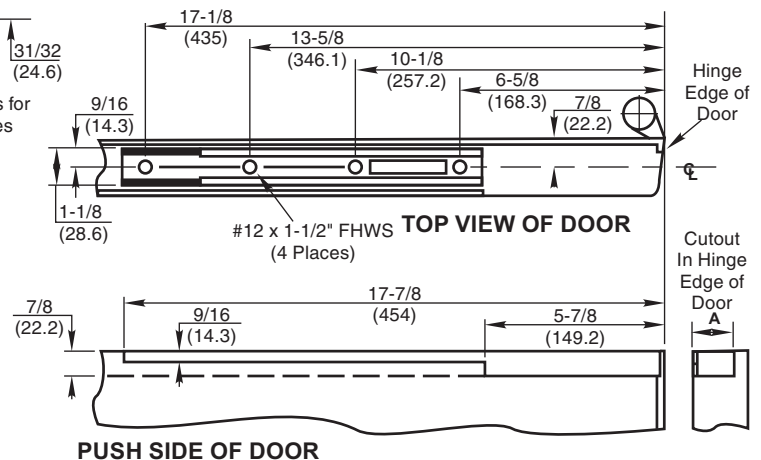
Installation Instructions

IS-MW0700 (06-09)

HEAD FRAME INSTALLATION



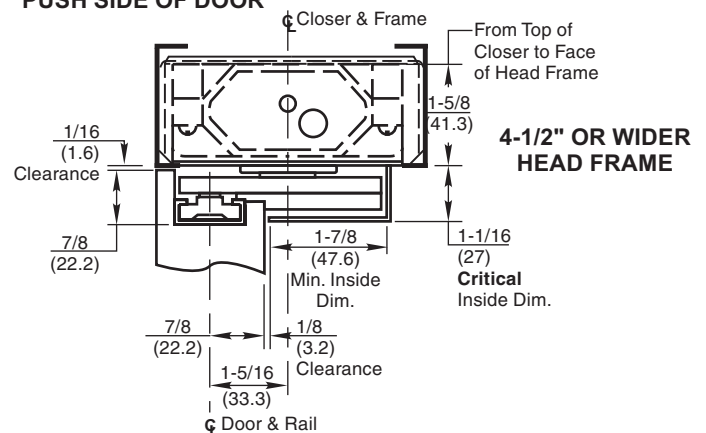
DOOR INSTALLATION

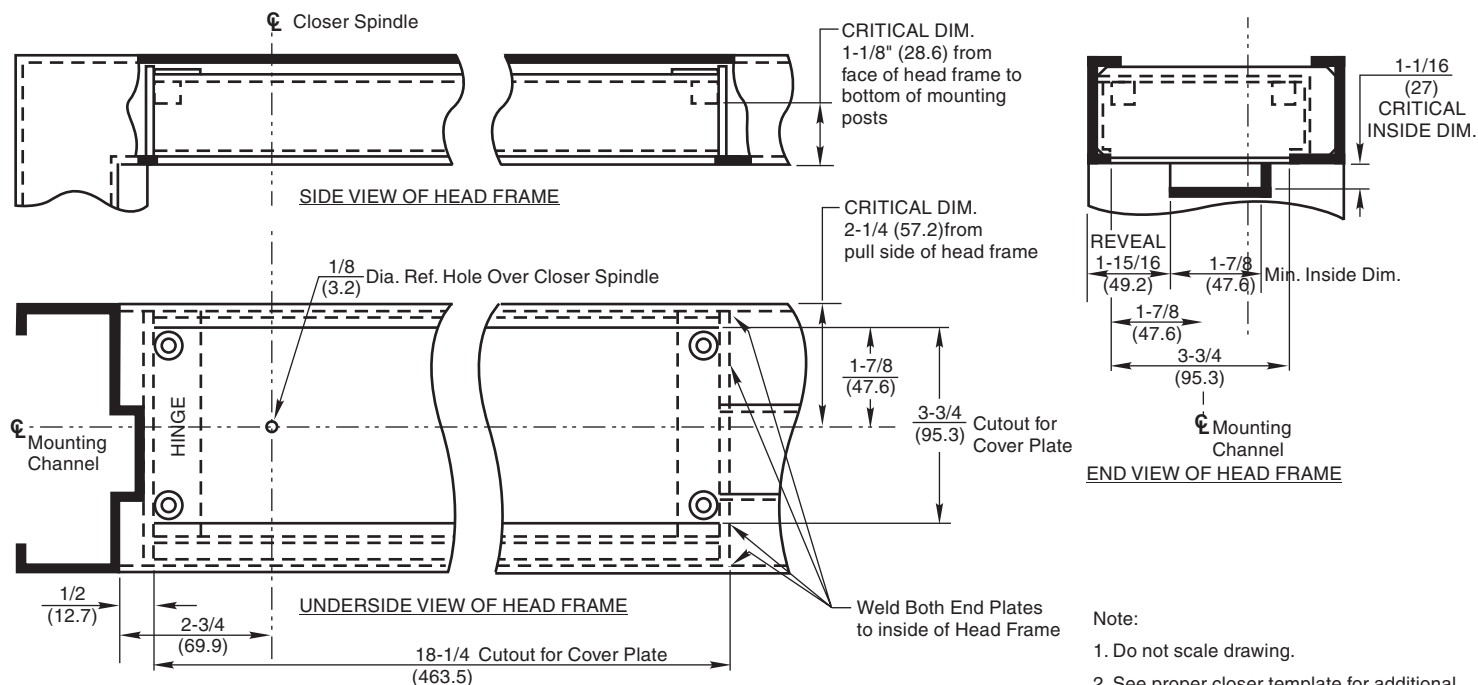


Door Hanging Method		Max. Degree	Dim. "A"
Butt Hinge	4 x 4	86°	7/8
		106°	7/8
	4-1/2 x 4-1/2	88°	7/8
3-4 Offset Side Jamb Pivot		108°	7/8
		93°	7/8
		113°	1-5/8

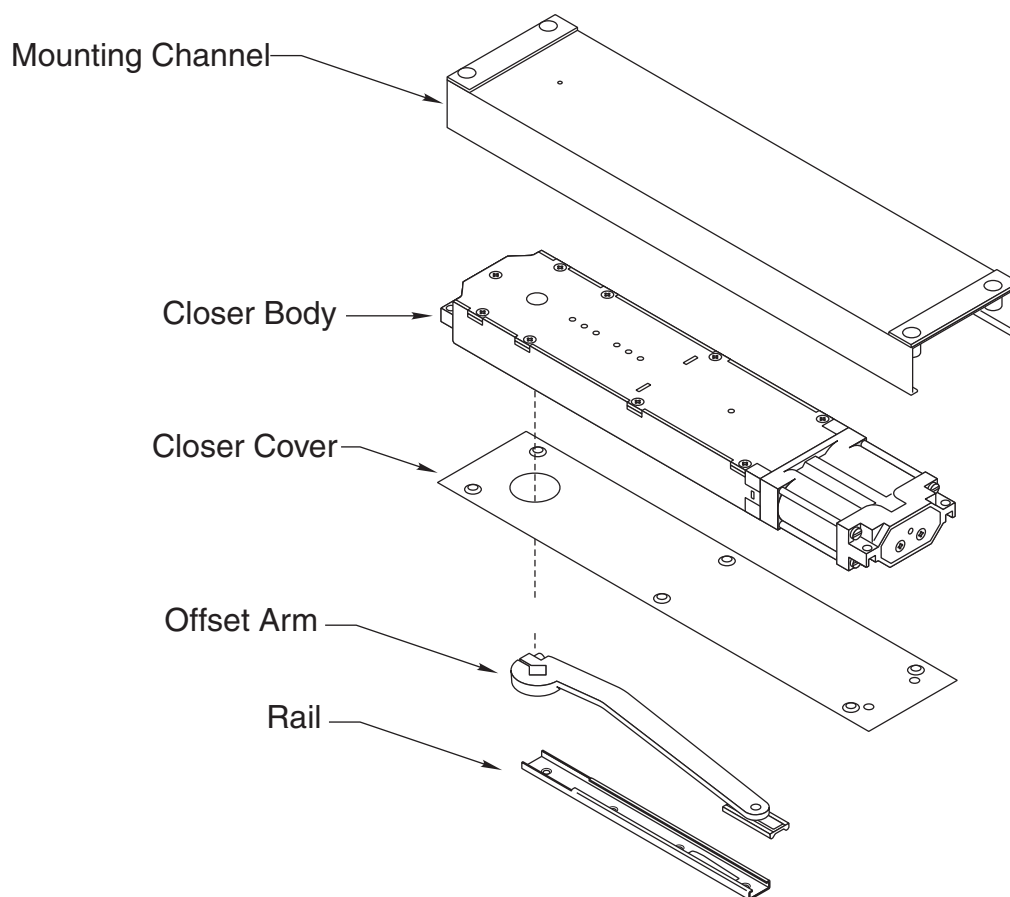
Notes:

1. Do not scale drawing.
2. Right hand shown.
3. For use on doors with a minimum 7/8" deep top web. DO NOT use this template for head frames less than 2" x 4-1/2" wide.
4. No. 0192 Mounting Channel included. See template OC60200.
5. All dimensions are in inches (mm).

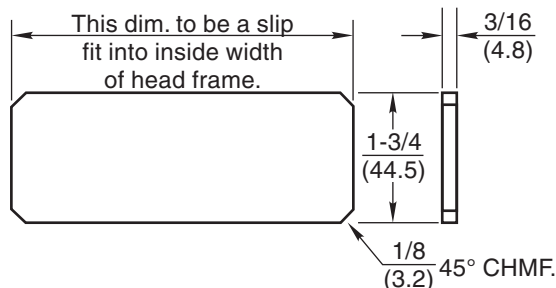




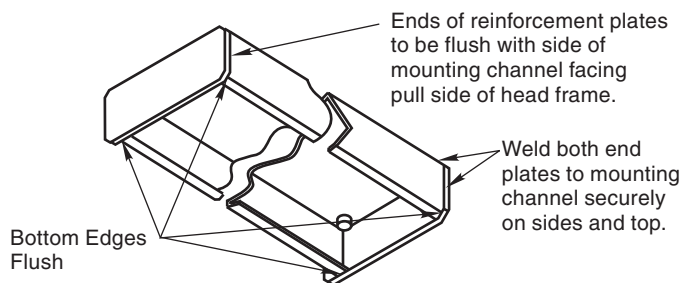
Included in package:



1. Mounting Channel Prep:
Make (2) reinforcement end plates for Mounting Channel.

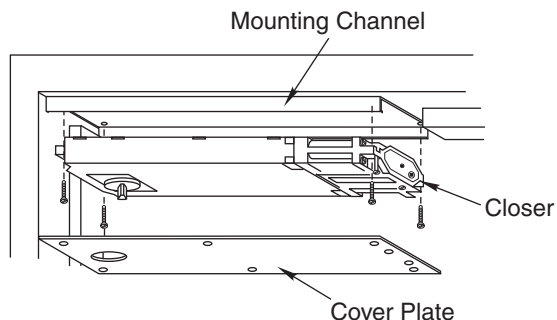


2. To locate end plates (by others) on hollow metal mounting channel first determine hand of door. Then, holding mounting channel in front of you with end stamped HINGE away from you, locate end plates as shown. THE BOTTOM EDGES OF THE END PLATES AND THE MOUNTING CHANNEL MUST BE FLUSH.



Clamp end plates to mounting channel. Tack weld end plates to mounting channel. Side legs of mounting channel must be at right angles to top of channel and parallel to one another after end plates are welded in place.

3. Frame Prep:
Cut hole in head jamb for cover plate.



4. Slide assembled unit (with end plates welded to mounting channel) into head jamb. Important: End of channel stamped HINGE must face hinge jamb of frame. Assembly should be clamped down flush with the inside of the head frame.

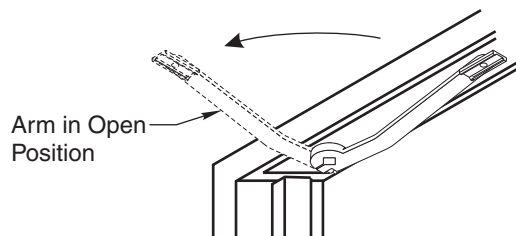
5. Critical Dimensions:
 - a. Check $2\frac{3}{4}$ " from hinge jamb to $\frac{1}{8}$ " dia. reference hole in mounting channel.
 - b. Check $2\frac{1}{4}$ " from pull side of head frame to centerline of mounting channel.
 - c. Check $1\frac{1}{8}$ " from outside face of head frame to the bottom of the mounting posts.

6. Install closer in head jamb by attaching closer with (4) $\frac{1}{4}$ "-20 x $\frac{3}{4}$ " RHMS. Install cover plate.

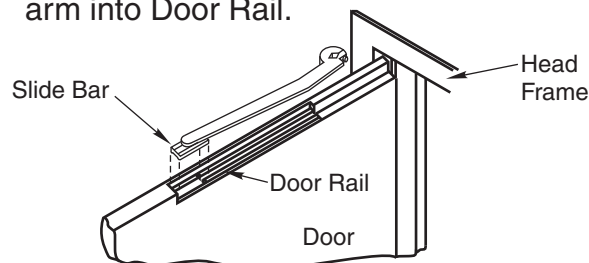
7. Door Prep:
 - a. Prepare door for Arm Rail. See template for necessary door prep.)
 - b. Install Arm Rail in door using (4) 12 x $1\frac{1}{2}$ FHWS. Spring clip in rail must be toward hinge edge of door.
 - c. Hang door. Pivots or butts not furnished with overhead closer package.

8. Installation of Arm
(Note: Close operating adjusting valve controlling correct door swing. Leave backcheck valve open.)

- a. Using arm as wrench, it is IMPORTANT that spindle of closer be turned to 90° or into hold-open position.

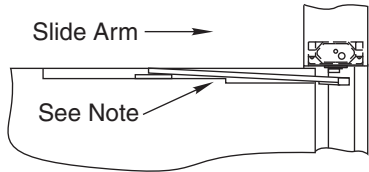


- b. Remove arm from spindle.
- c. Open door to 90° and insert Slide Bar of arm into Door Rail.



8. Installation of Arm Con't

- d. **IMPORTANT:** Slide arm directly back toward hinge edge of door so that arm can be attached to spindle. Slight pressure will be required to override leaf spring in rail. Do NOT remove Slide Bar from rail.
- e. Pull arm down and under closer spindle. **CAUTION:** Care should be taken to avoid distorting corner of door cutout.



- f. Align arm hole and closer spindle. When properly aligned, arm should readily slide over closer spindle. **DO NOT FORCE.** Door may require a slight movement back and forth to aid in alignment of arm and closer spindle. After arm is assembled onto closer spindle tighten arm socket head cap screw (5/16" - 18 x 1-1/4") securely.

9. Adjust closing speed of door

To decrease speed turn valve clockwise. To increase speed turn valve counter clockwise

To increase backcheck, turn valve clockwise, to decrease backcheck turn valve counter clockwise

