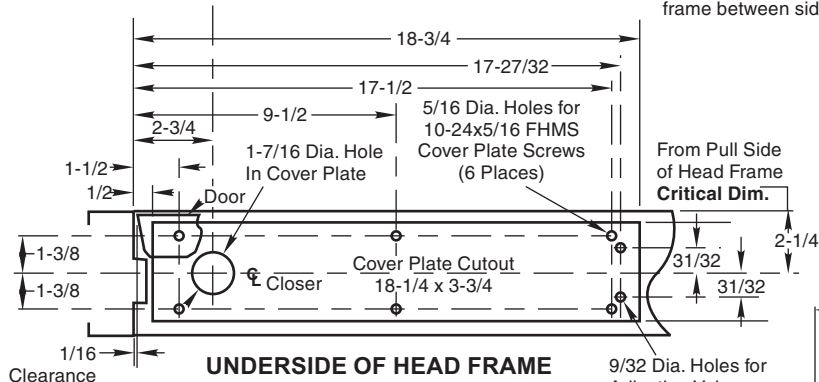
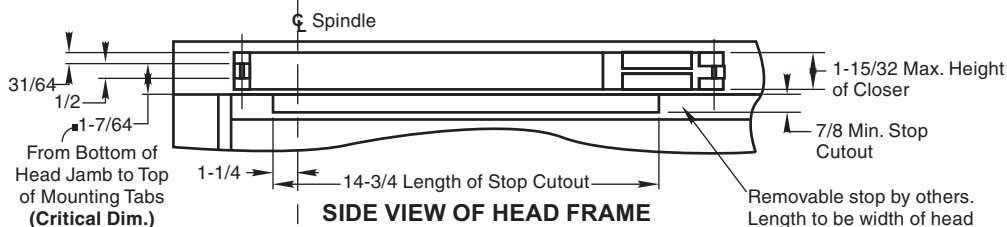
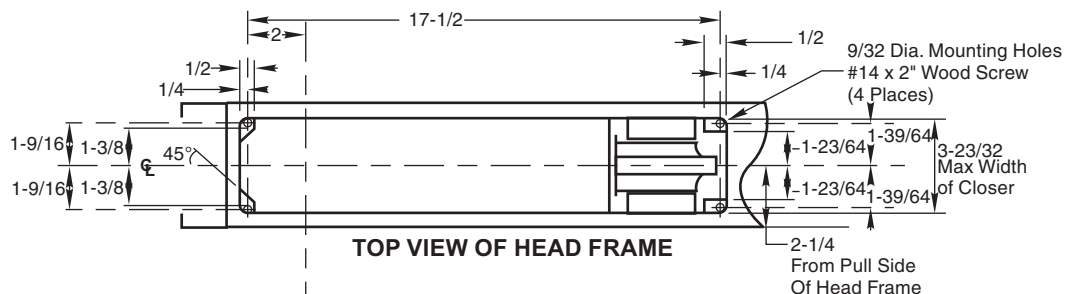


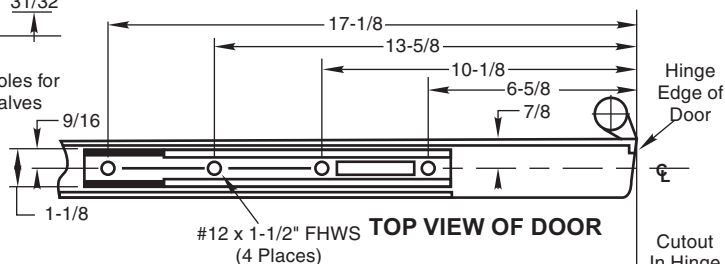
Installation Instructions

IS-W0700 (06-09)

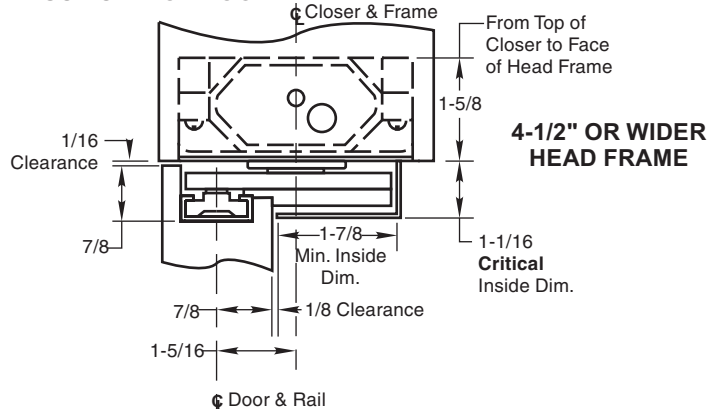
HEAD FRAME INSTALLATION



DOOR INSTALLATION



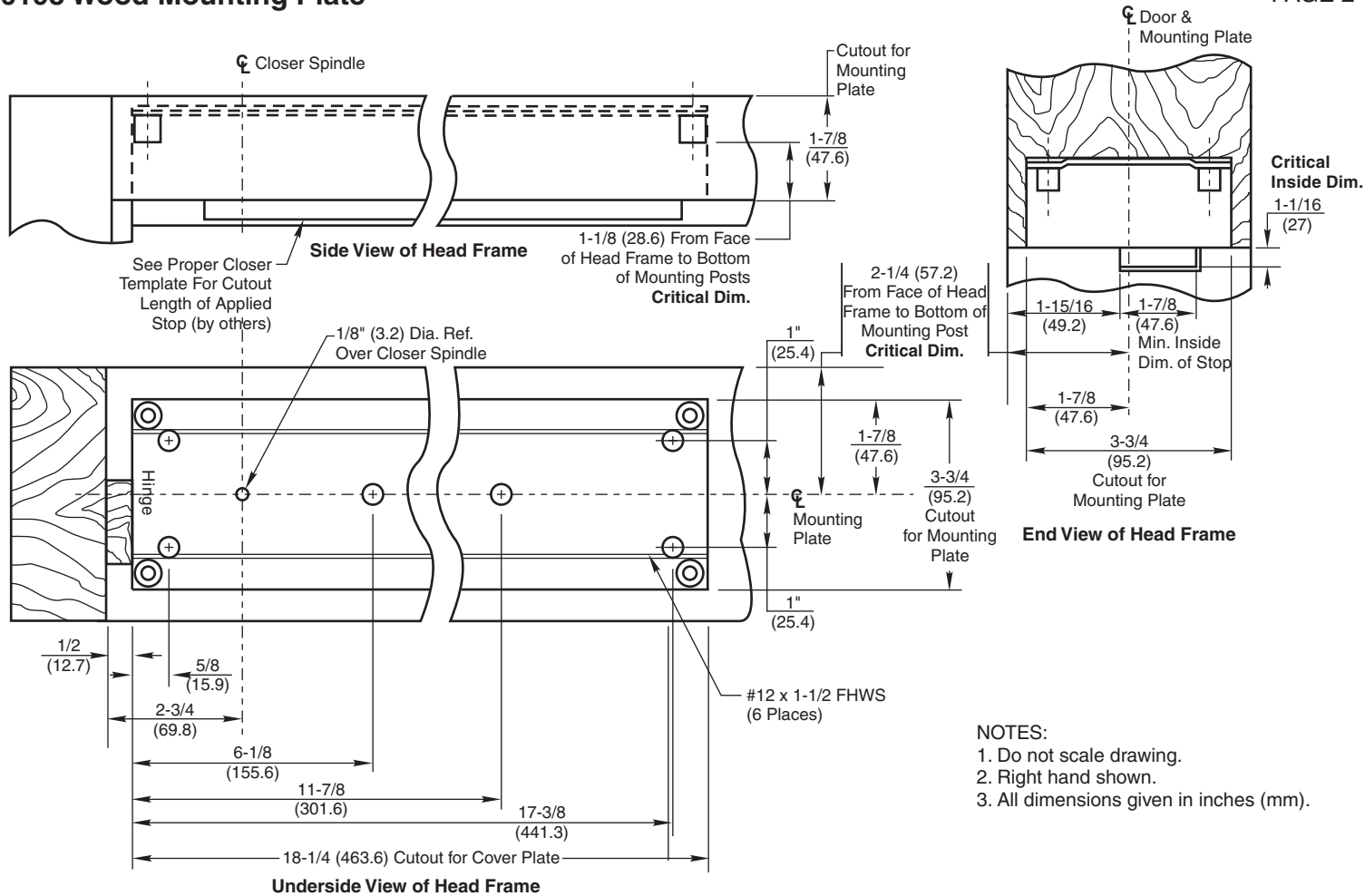
PUSH SIDE OF DOOR



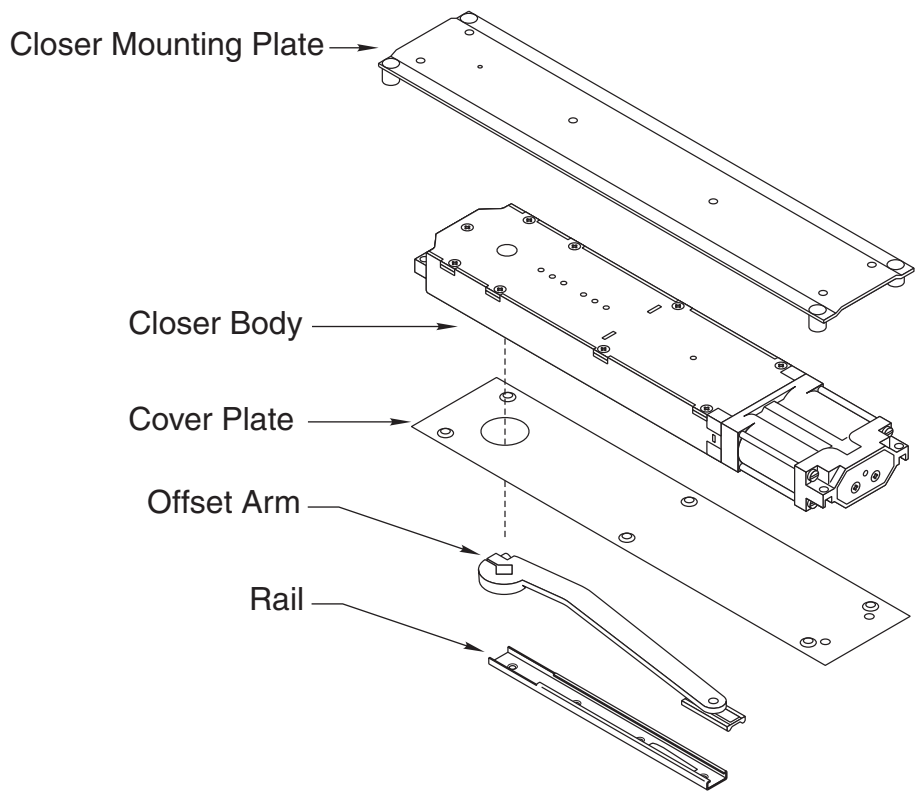
Door Hanging Method	Closer No.	Max. Degree	Dim. "A"
Butt Hinge	4 x 4 W070090	86°	7/8
	W0700105	106°	7/8
4-1/2 x 4-1/2	W070090	88°	7/8
	W0700105	108°	7/8
3/4 Offset Side Jamb Pivot	W070090	93°	7/8
	W0700105	113°	1-5/8

Notes:

- Do not scale drawing.
- Right hand shown.
- For use on doors with a minimum 7/8" deep top mortise. DO NOT use this template for head frames less than 2"x4-1/2" wide. For 1-3/4" thick doors only.
- No. 0198 mounting plate included. See template OC60210.
- All dimensions are in inches. Metric = 25.4 x inch.



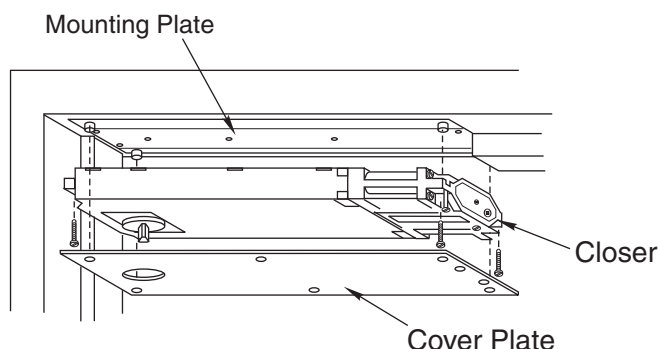
Included in package:



1. Prepare head frame for 0198 Mounting Plate. See 0198 Wood Mounting Plate template on page 2.
2. Check 2-3/4" dimension from hinge jamb to 1/8" dia. reference hole in Mounting Plate.

Check 1-1/8" dimension from under side of head frame to the bottom of the mounting post.

3. Install Mounting Plate to head jamb using six (6) 12x1-1/2 FHWS.
Caution: End of Mounting Plate stamped "hinge" to face hinge jamb of frame.



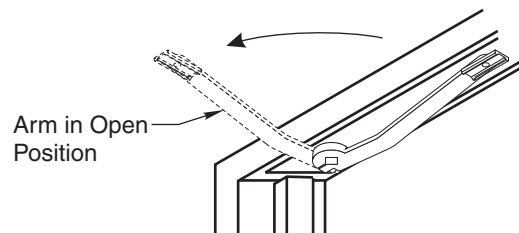
4. Install closer in head jamb by attaching closer with (4) 1/4"-20 x 3/4" RHMS. Install cover plate.

5. Door Preparation

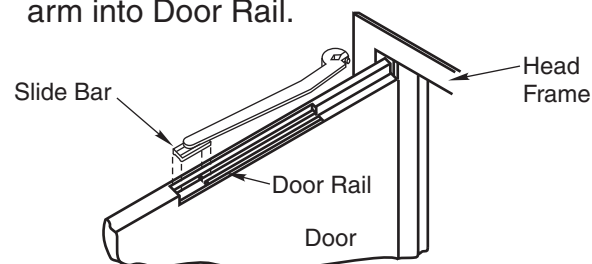
- a. Prepare door for Arm Rail. See template for necessary door prep.)
- b. Install Arm Rail in door using (4) 12 x 1-1/2 FHWS. Spring clip in rail must be toward hinge edge of door.
- c. Hang door. Pivots or butts not furnished with overhead closer package.

6. Installation of Arm
(Note: Close operating adjusting valve controlling correct door swing. Leave backcheck valve open.)

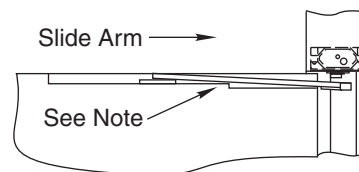
- a. Using arm as wrench, it is IMPORTANT that spindle of closer be turned to 90° or into hold-open position.



- b. Remove arm from spindle.
- c. Open door to 90° and insert Slide Bar of arm into Door Rail.



- d. IMPORTANT: Slide arm directly back toward hinge edge of door so that arm can be attached to spindle. Slight pressure will be required to override leaf spring in rail. Do NOT remove Slide Bar from rail.
- e. Pull arm down and under closer spindle. CAUTION: Care should be taken to avoid distorting corner of door cutout.



- f. Align arm hole and closer spindle. When properly aligned, arm should readily slide over closer spindle. DO NOT FORCE. Door may require a slight movement back and forth to aid in alignment of arm and closer spindle. After arm is assembled onto closer spindle tighten arm socket head cap screw (5/16" - 18 x 1-1/4") securely.

7. Adjust closing speed of door

To decrease speed turn valve clockwise. To increase speed turn valve counter clockwise

To increase backcheck, turn valve clockwise, to decrease backcheck turn valve counter clockwise

