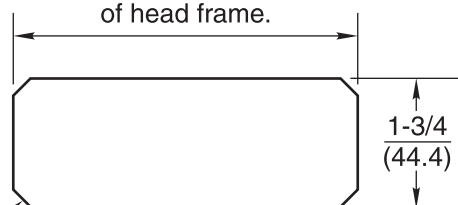


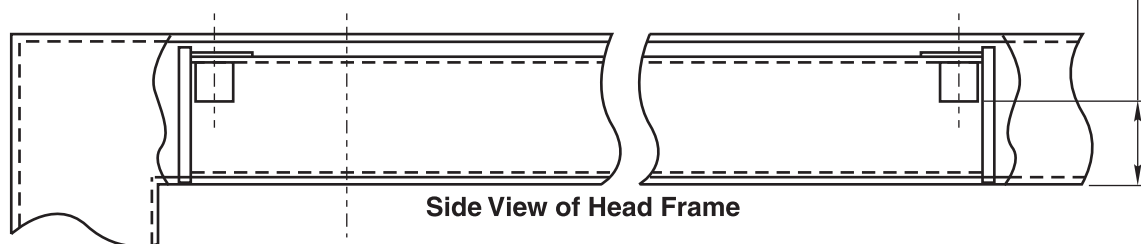
192 Hollow Metal Mounting Channel Center Hung

This dimension to be a slip fit into inside width of head frame.



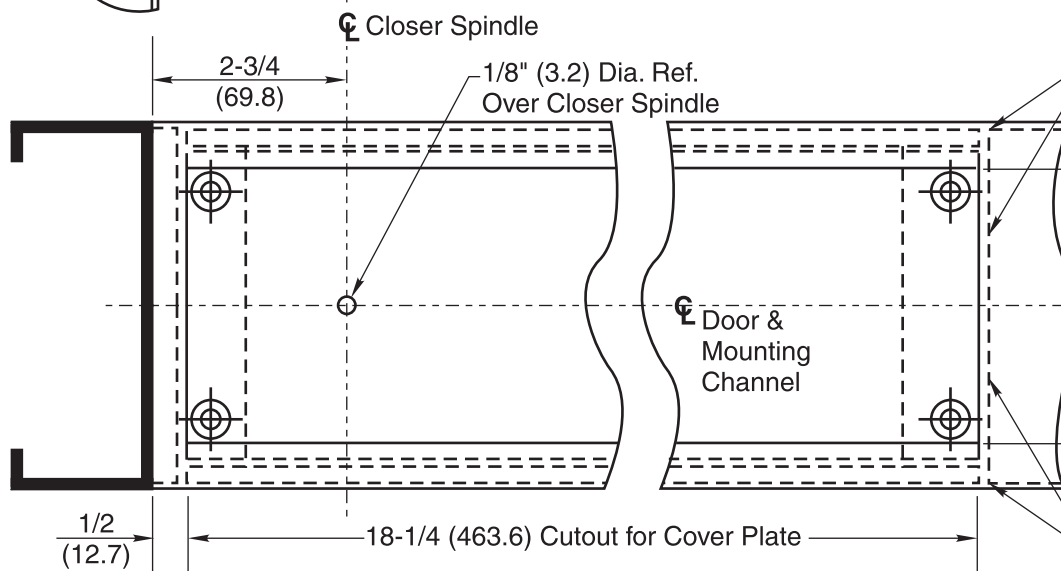
1/8 (3.2) x 45° CHMF.

**Step #1
Reinforcement End Plate
(2 Req'd. by Others)**



Side View of Head Frame

1-1/8 (28.6) From Face of Head Frame to Bottom of Mounting Posts
Critical Dim.



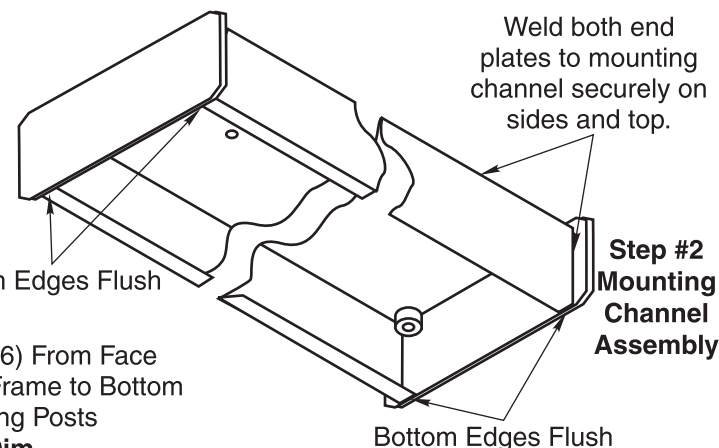
Underside View of Head Frame

Weld both end plates to mounting channel securely on sides and top.

1-7/8 (47.6)
3-3/4 (95.2) Cutout for Cover Plate

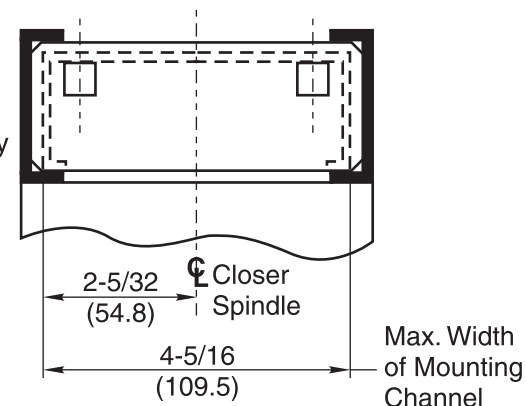
Weld both end plates to inside of head frame. See Note 5

**Step #3
Head Frame
Installation**



**Step #2
Mounting
Channel
Assembly**

End View of Head Frame



NOTES:

1. Do not scale drawing.
2. Right hand door shown.
3. Minimum width head frame 2" x 5-1/2" (50.8 x 139.7) 16 ga. max.
4. All dimensions given in inches (mm).
5. Channel must be installed prior to jobsite installation of frame.

192 Hollow Metal Mounting Channel Center Hung

RIXSON®
ASSA ABLOY

www.rixson.com

TEMPLATE NUMBER

OC60000

DATE

04-09