

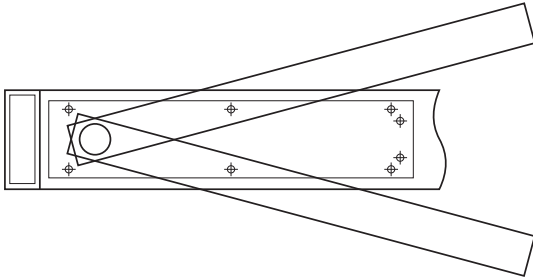
6. Centering the door. Open the adjustment valves.

### 800 Series

Center door in jamb by adjusting centering screws in top arm. Tighten arm screws securely.

### 700 Series

Adjust arm centering screws to provide pressure of door against stop on frame. Tighten main arm screws securely.

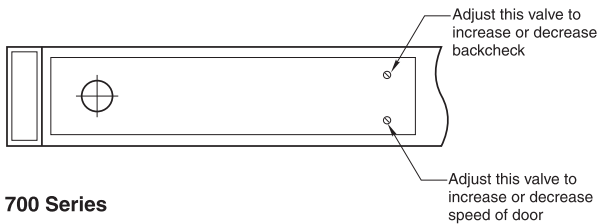


7. Adjust closing speed of door.

### 800 Series

Each valve controls one swing only. To decrease speed turn clockwise. To increase speed turn counter clockwise.

Adjust each valve screw per illustration.



### 700 Series

To decrease speed turn valve clockwise. To increase speed turn valve counter clockwise.

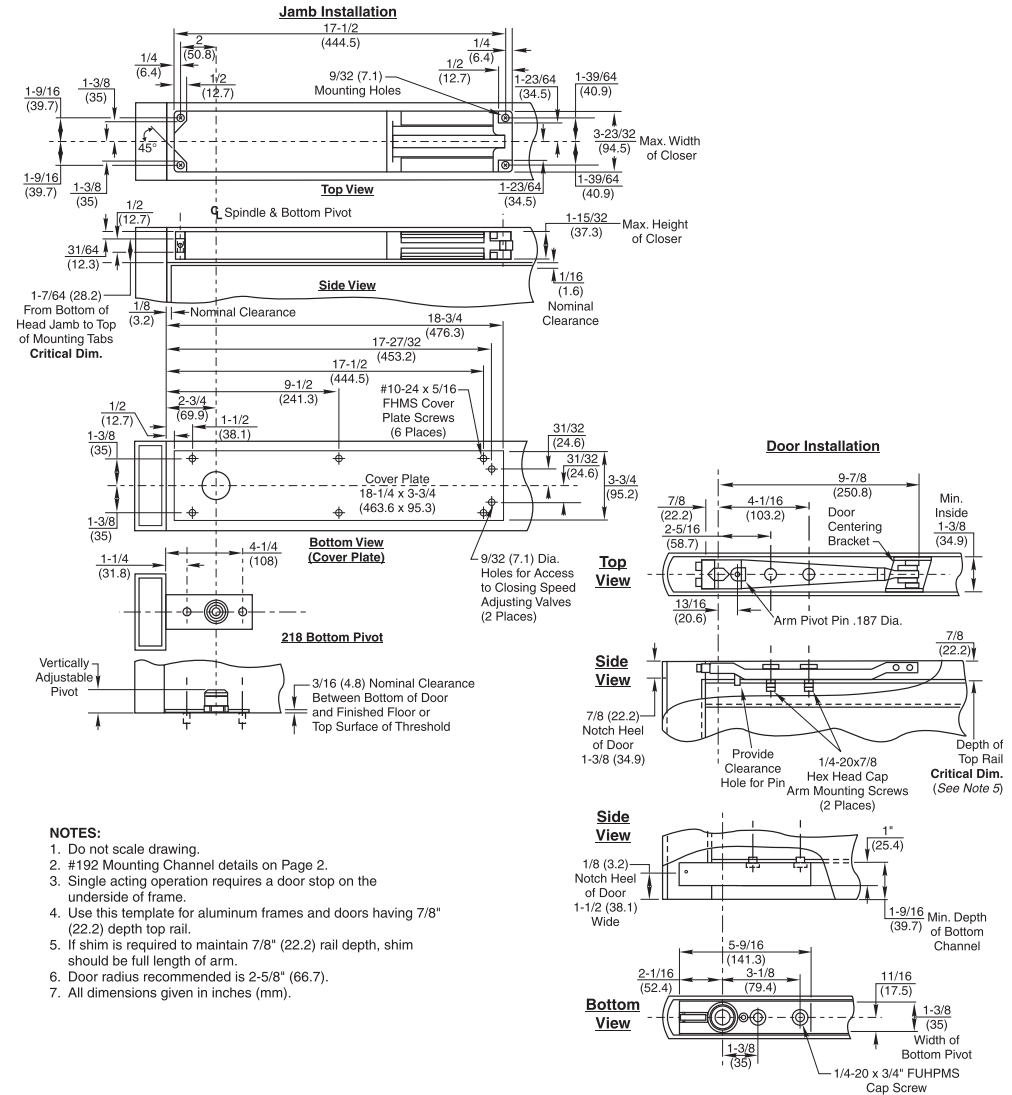
To increase backcheck, turn valve clockwise, to decrease backcheck turn valve counter clockwise.

**RIXSON®**  
**ASSA ABLOY**

## M700/800 Series Overhead Concealed Closer (Metal Door and Frame) M700 Series, Center Hung Single Acting, Handed M800 Series, Center Hung Double Acting, Non-handed

### Installation Instructions

IS-M700M800 (01-11)



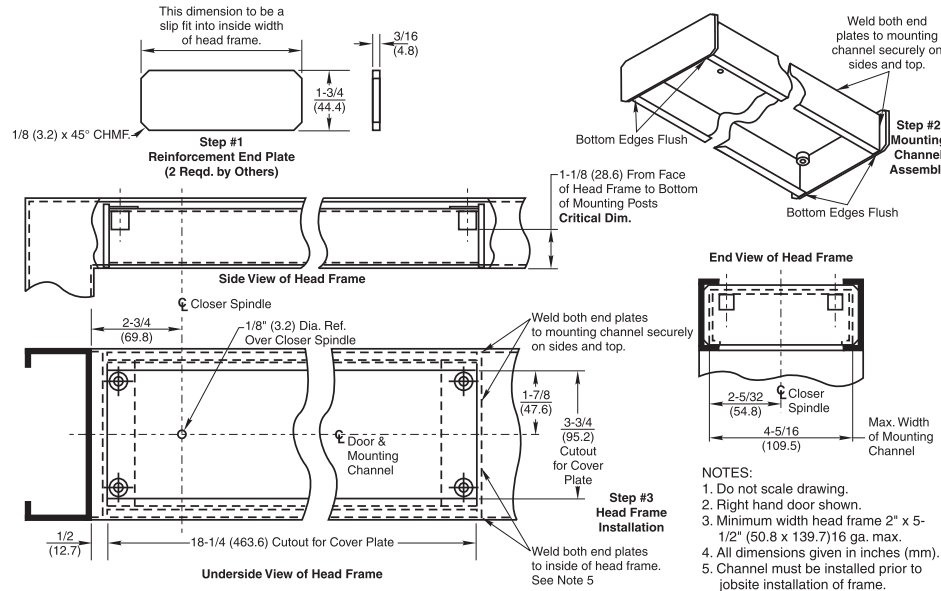
**RIXSON®**  
**ASSA ABLOY**

ASSA ABLOY is the global leader in door opening solutions, dedicated to satisfying end-user needs for security, safety and convenience.

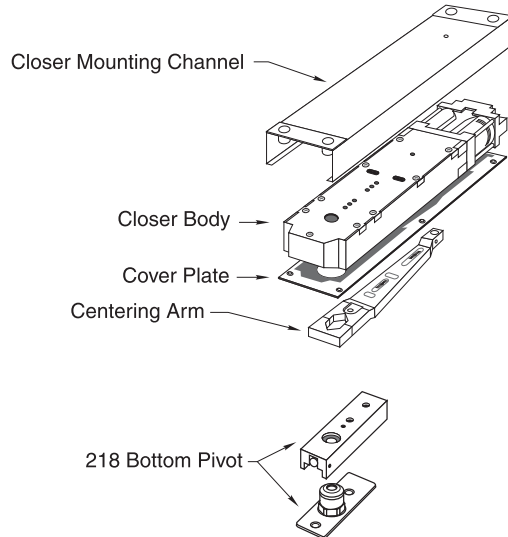
Rixson® is a registered trademark of Yale Security Inc., an ASSA ABLOY Group company. Copyright© 2006, 2011, Yale Security Inc., an ASSA ABLOY Group company. All rights reserved. Reproduction in whole or in part without the express written permission of Yale Security Inc. is prohibited.

## 192 Hollow Metal Mounting Channel

PAGE 2



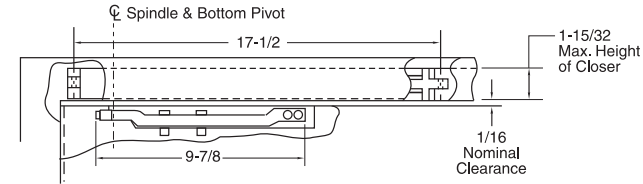
### Included in package:



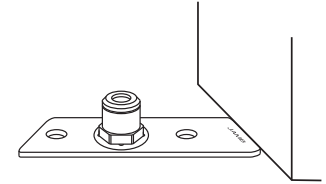
## Installation Instructions

PAGE 3

### 1. Install mounting channel in frame.

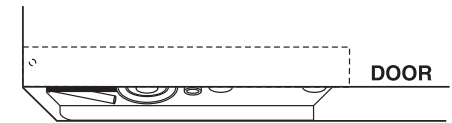


### 2. Install bottom pivot floor portion. (see 218 instruction sheet)



### 3. Install main arm using (2) 1/4 x 20 x 7/8\"/>

### 4. Install door portion of bottom pivot. (see 218 instruction sheet)



### 5. Install Door. Turn closing speed valves shut (clockwise).

- Using a suitable wrench, turn spindle of closer to 90° OR hold open position
- Slide the door over the 218 pivot, which is attached to the bottom of the door frame. Making sure the door is resting on the bottom pivot, tilt the door so that the opening in the top centering bracket fits into the main spindle at the top of the door.
- Install arm clamp making certain that spindle and arm fit properly. Fasten with two 5/16\"/>

