

RIXSON
ASSA ABLOY

ASSA ABLOY, the global leader
in door opening solutions



SPECIALTY CLOSERS

High-End Residential
High-End Security
Gate Solutions

Copyright © 2001-2018, ASSA ABLOY Accessories and Door Controls Group, Inc., an ASSA ABLOY Group company. All rights reserved. Reproduction in whole or in part without the express written permission of ASSA ABLOY Accessories and Door Controls Group, Inc. is prohibited.

TABLE OF CONTENTS

General Information..... 3

How to Select Product 4

Options 5

Certifications..... 6

Limited Warranty..... 6

Specifications..... 6

Double Acting Center Hung Floor Closers

10 Duo-Chek® Closer with Hold Open 7

12 Duo-Chek® Closer 7

15 Duo-Chek® Closer with Hold Open 7

16 Duo-Chek® Closer 7

Parts..... 8

Interior Gate Closers

354 Flange Mounting 1-3/4" Gate Only 9

355 Flange Mounting 1-3/4" Gate Only 9

356 Flat Arm 10

357 Flat Arm 10

359 Independently Hung (Hanging Means by Others) 11

Parts 12-14

Security Closers

SEC27-180 Closer 15

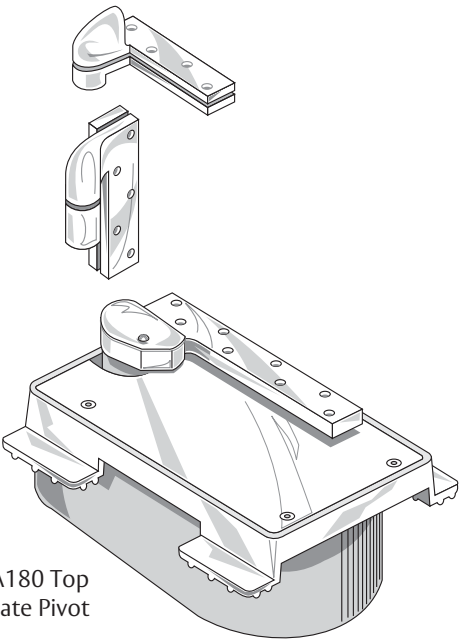
Parts 16

Exterior Gate Closers

1351 17

Quick Reference of Options 18

How to Order 19



SEC27-180 Closer with FA180 Top
Pivot and FA19 Intermediate Pivot
(recommended)

The closers in this section are for specific niche markets, from the high-end residential Duo-Chek® to the high-security SEC27-180 closers. No two have the same features.

Duo-Chek® Model 10, 12, 15, 16

The Duo-Chek® is for high-end residential applications, such as the double acting door going from the kitchen to the dining room.

The weight of the door is supported at bottom

- Uses laws of gravity to its advantage
- Door swings with less resistance
- Reduced stress on frame

Fasteners are in shear, not tension

- Eliminates door sag

Hardened steel spindles

- Thrust bearing supports vertical load
- Needle bearings for lateral forces
- Bottom arm directly attached to closer spindle. A mechanical advantage that increases efficiency, ensuring that ADA compliant opening forces will still close the door
- One-to-one ratio of door swing to spindle rotation makes control more precise
- Floor closers are more efficient than a regular arm surface closer

Gate Closers Models 354, 355, 356, 357, 359

Closers that mount to the side jamb for small gates such as teller gates, courtroom gates.

- Closer mounts off the floor approximately 6" under the door
- Double acting with a hold open option
- Single acting when used with butts

High-Security Models SEC27-180

These closers are used on doors in detention areas in hospitals, detention centers and non-cell prison doors. The weight of the door is supported at bottom.

- Door swings with less resistance
- Heavier doors can be accommodated
- Reduced stress on frame

Fasteners are in shear, not tension

- Eliminates door sag
- Vertically adjustable

Heavy-duty hardened steel spindles

- Designed to provide positive dead stop
- Thrust bearing supports vertical load
- Needle bearings for lateral force

Bottom arm directly attached to closer spindle

- A mechanical advantage that increases efficiency
- One-to-one ratio of door swing to spindle rotation makes controls more precise

Helical torsion spring

- Operates in same direction as door movement and contributes to even higher closer efficiency
- A torsion spring has a much longer life than standard compression springs

Advantages of security concealed floor closers

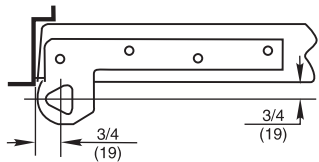
- Vandal resistant – mechanism not exposed
- Supplied with Torx® screws

Exterior Gate Closers Model 1351

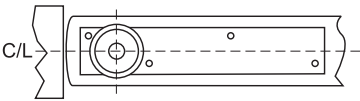
Surface closers and tracks used on high-end residential and commercial ornamental iron fencing systems that must be self-closing.

- Extremely easy to install
- Uses surface closer technology

1. Offset vs. Center Hung Application



3/4" Offset
Pivot point located 3/4" from the heel edge of the door and 3/4" from face of door.



Center Hung
Pivot point centered in thickness of door. Distance from heel edge can vary 2-3/4 and up (Not for use on fire rated doors).

2. Size of Door (width, height, thickness)

Estimated door weights pounds per square foot (PSF)

DOOR MATERIAL	DOOR THICKNESS		
	1-3/4"	2-1/4"	3
Hollow Metal	6.5	7	—
Solid Core Wood	7	9	11.5
Aluminum/Glass Storefront	3.5	4	—
MDF	7	9	11.5
TEMPERED GLASS	3/8"	1/2"	3/4"
	5	7	9.75

Example: 3/0 X 7/0 X 1-3/4" WD
Door: 21sq ft x 7lb.sq ft = 147lbs

Example: 3/6 X 8/0 X 1/2" Tempered Glass Door
Door: 28sq ft x 7lb./sq ft = 196lbs

For doors of other sizes consult factory

3. Expected Frequency of Door Operation

APPLICATION	DAILY	YEARLY	
Large department store entrance	5,000	1,500,000	High
Large office building entrance	4,000	1,200,000	
Theater entrance	1,000	365,000	
School entrance	1,250	225,000	
School restroom door	1,250	225,000	
Store or bank entrance	500	150,000	
Office building restroom door	400	118,000	Average
School corridor door	80	15,000	
Office building corridor door	75	22,000	
Store restroom door	60	18,000	
Residential entrance door	40	15,000	
Residential restroom door	25	9,000	Low
Residential hallway door	10	3,600	
Residential closet door	6	2,200	



Duo-Chek® Options

Physically Handicapped – Prefix PH

To comply with ICC/ANSI A117.1 and guidelines established by the Americans With Disabilities Act, PH prefix indicates 5 lbs. of opening force.

Non-Hold Open – Suffix N

These closers do not hold the door open. This feature cannot be changed in the field.

Automatic Hold Open – Suffix A

These closers hold the door open at 90°. This feature cannot be changed in the field.

Extended Spindle – Suffix Extra Length

Any special floor coverings or severe door undercuts will affect spindle height. In these applications, an extended spindle may be required. See product template to determine if an extended spindle is needed. Extended spindles available in 1/2" increments up to 2" longer than standard.

Less All Parts – Suffix LAP

If a closer is needed for replacement, the arm, cover, cement case, top pivot and floor plate are omitted.

Less Floor Plate – Suffix LFP

When thresholds or cover pans are being used, the closer doesn't need the decorative floor plate.

Less Cement Case – Suffix LCC

For existing installations or when cement case has been sent earlier in construction. Closer will be packaged without the cement case.

Less Top Pivot – Suffix LTP

For unusual head conditions where the top pivot cannot be used, the closer is shipped without the top pivot.

Models 350 Gate Closers - No Options

SEC27-180 Options

Degree of Swing – Suffix -180

Single acting, heavy-duty floor closers have a deadstop. This means that the door cannot go past a certain point. The SEC27-180 allows the door to swing to 180°.

Non-Hold Open – SEC closers are non-hold open

Less Cement Case – Suffix LCC

For existing installations or when cement case has been sent earlier in construction. Closer will be packaged without the cement case.

Less Top Pivot – Suffix LTP

For unusual head conditions where the top pivot cannot be used, the closer is shipped without the top pivot.

Extended Spindle – Suffix Extra Length

Any special floor covering or severe door undercuts will affect spindle height. In these applications, an extended spindle may be required. See product template to determine if an extended spindle is needed. Extended spindles available in 1/2" increments up to 2" longer than standard.

Model 1351 - No Options



Certifications

The Rixson® Duo-Chek®, 350 gate closers and SEC27-180 closers are in compliance with ANSI/BHMA A156.4 standards. See individual products for sub-section.

Limited Warranty

Rixson® specialty closers, Duo-Chek®, gate closers are warranted for 2-years against defect. Rixson® specialty closer SEC27-180 is warranted 10 years against defect. See Rixson® Price Book for specific details of the limited warranty.

Specifications

Double Acting Floor Closer Specifications

All low traffic, double-acting doors shall use Duo-Chek® models 10,12,15, or 16. Closing speed adjustments can be made through the cover plate. Closers must be available in lighter springs for accessibility requirements.

Interior Gate Closer Specifications

All interior gates shall use model 350 closers. Closers shall be mounted above the floor and may be single or double acting, depending on hanging means. Closers shall have hydraulic closing speed adjustment. Units shall have built-in hold open.

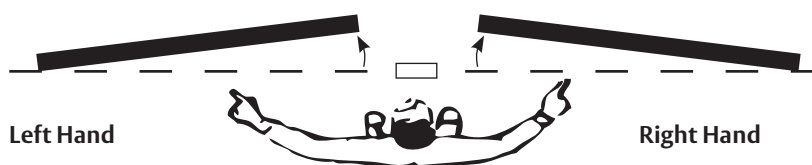
Security Closer Specifications

Closer shall be model SEC27-180 concealed floor closer package. Cement case to be cast iron with cast-in integral anchor extensions. 1/4" thick steel cover plate to be recessed into lip on cement case. Closer mechanism to have individual hydraulic cylinders for closing functions and adjustable hydraulic backcheck and be operated by a torsion spring. Closing and latch speed to be controlled by two independent valves. Closer to have built-in dead stop. Bottom arm shall be 1/2" thick steel. Top pivot shall be asylum type with Torx® security fasteners.

Exterior Gate Closer Specifications

All exterior gates shall be Rixson® model 1351. They shall be surface type with non-corrosive tracks. Track shall be two sided to keep debris from collecting. Must accommodate gates with top cross member or open spokes.

How to Determine Hand of Door



Face a door swinging open away from you. If it opens to the right, it is right handed. If it opens to the left, it is left handed.

RIXSON®
ASSA ABLOY

Models 10 & 12 Duo-Chek®

SPECIALTY CLOSERS

DOUBLE ACTING CENTER HUNG

Application

- Double Acting, Non-handed
- Low/Medium Traffic Interior Doors
- Weight to 125 lbs.
- Sizes up to 2'10" x 7'0" (864 x 2134mm)



Product Description & Features

- Model 10 is 90° automatic hold open; 12 is non-hold open
- Standard top pivot: 101020 walking beam type
- Not allowed for use on labeled fire doors
- Cast iron cement case
- Adjustable closing speed
- Centering arm for adjustment
- 95° maximum opening
- 1-3/4" door thickness
- Furnished with wood and machine screws

Optional Features

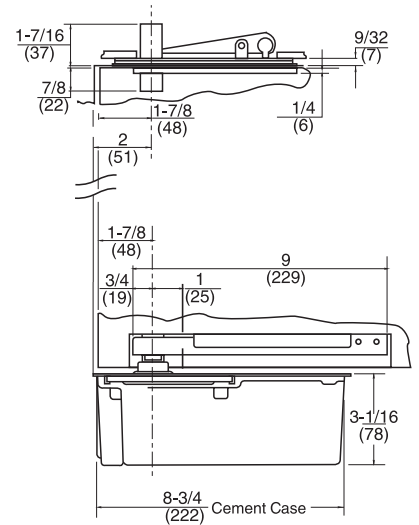
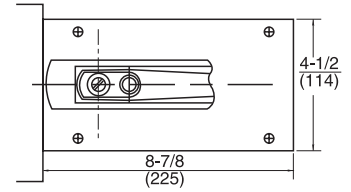
- Extended spindles available in 1/2" increments up to 2" longer than standard

Compliance

- Models 10 and 12 available to meet ICC/ANSI A117.1 low opening force requirements. Prefix "PH"
- ANSI C06013

Technical Information

Doors must have radiused edges



Models 15 & 16 Duo-Chek®

Application

- Weight to 125 lbs.
- Sizes up to 3'6" x 7'0" (1067 x 2134mm)

Product Description & Features

Identical to Models 10 & 12 except:

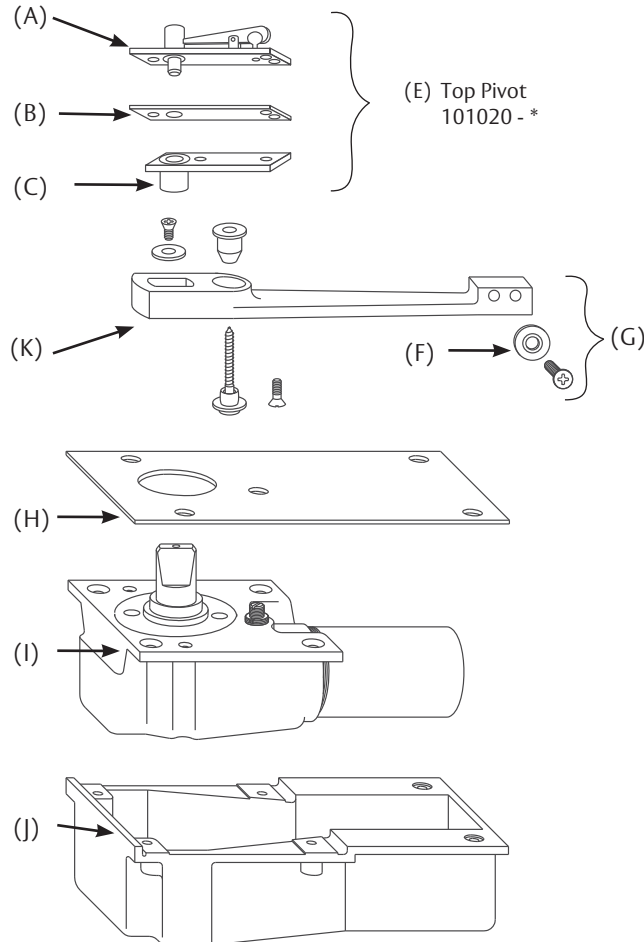
- Stronger spring to accommodate wider door
- 15 is 90° automatic hold open; 16 is non-hold open
- "PH" not available

RIXSON®
ASSA ABLOY

ASSA ABLOY, the global leader
in door opening solutions

Copyright © 2001-2018, ASSA ABLOY Accessories and Door Controls Group, Inc., an ASSA ABLOY Group company. All rights reserved.
Reproduction in whole or in part without the express written permission of ASSA ABLOY Accessories and Door Controls Group, Inc. is prohibited.

- (A) Jamb Portion
3065
- (B) Finish Plate
012202-*PK(BRS)
012204-*PK(SS)
- (C) Door Portion
12716
- (F) Alignment Screws &
Washers
107032 - *
- (K) Duo Arm
1004



- (E) Top Pivot
101020 - *
- (G) Arm Package
102026 - *
(Includes K and F) and
attaching screws
- (H) Floor Plate with Screws
104020 - *
- (I) Closer Body (Specify
Complete Model No. x
LAP)
- (J) Cement Case with Screws
103000

SCREW KITS

Top Pivot Screw Kit
107329

Arm Screw Kit
107054

Floor Plate Screw Kit
107004-*

*specify finish

RIXSON®
ASSA ABLOY

Model 354

SPECIALTY CLOSERS

INTERIOR GATE CLOSERS

Application

- Double Acting, Non-handed
- Maximum weight: 75 lbs.
- Dwarf doors from 2'2" to 3'0" wide (660 x 914mm)



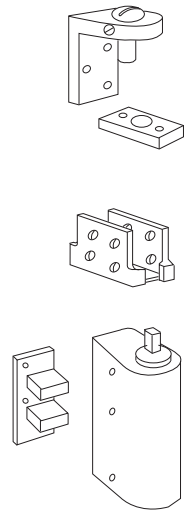
Product Description & Features

- Recommended for office rail gates, partitions, and lavatory stall doors
- Body mounts under gate
- Surface mounted top pivot: 3541020
- 1-3/4" door thickness
- Maximum opening 90°
- Arm adjustment door normally comes to rest at closed position. If door is to remain open, arm is set on spindle so door comes to rest at 90°
- Package also includes closer bracket and flange style arm
- Frame carries full weight of door
- Quiet control; no slamming or flapping
- All moving parts enclosed and fully immersed in lubricating checking fluid
- Painted finishes only
- Not compliant with ICC/ANSI A117.1 low opening force requirements

Compliance

- ANSI C09053

Technical Information



Model 355

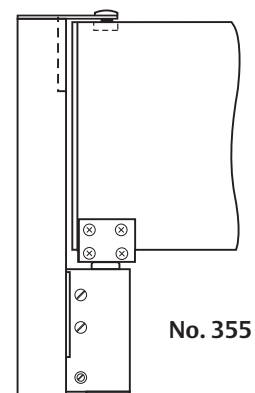
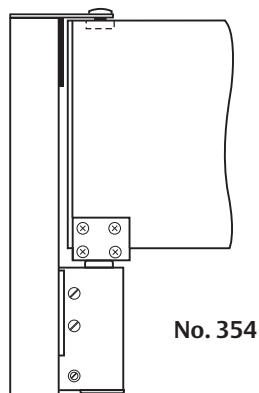
Application

- Double Acting, Non-handed

Product Description & Features

Identical to 354 except:

- Mortise top pivot: 3551020



RIXSON®
ASSA ABLOY

ASSA ABLOY, the global leader
in door opening solutions

Copyright © 2001-2018, ASSA ABLOY Accessories and Door Controls Group, Inc., an ASSA ABLOY Group company. All rights reserved.
Reproduction in whole or in part without the express written permission of ASSA ABLOY Accessories and Door Controls Group, Inc. is prohibited.

Application

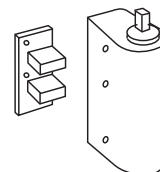
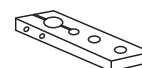
- Double Acting, Non-handed
- Maximum weight: 75 lbs.
- Dwarf doors from 2'2" to 3'0" wide (660 x 914mm)

**Product Description & Features**

- Recommended for office rail gates, partitions, and lavatory stall doors
- Body mounts under the gate
- Surface mounted top pivot: 3541020
- 1-3/4" door thickness
- Maximum opening 90°
- Arm adjustment door normally comes to rest at closed position. If door is to remain open, arm is set on spindle so door comes to rest at 90°
- Package also includes closer bracket and arm that may be surface mounted or mortised
- Frame carries full weight of door
- Quiet control; no slamming or flapping
- All moving parts enclosed and fully immersed in lubricating checking fluid
- Painted finishes only
- Not compliant with ICC/ANSI A117.1 low opening force requirements

Compliance

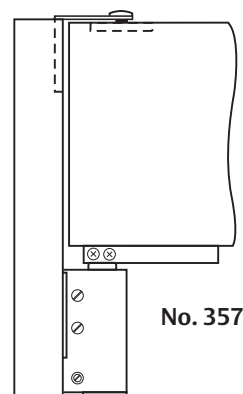
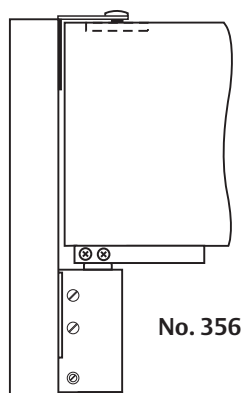
- ANSI C09503

Technical Information**Application**

- Double Acting, Non-handed

Product Description & Features

- Identical to 356 except:
- Mortise top pivot: 3551020



RIXSON®
ASSA ABLOY

Application

- Single Acting, Non-handed
- Maximum weight: 75 lbs.
- Dwarf doors from 2'2" to 3'0" wide (660 x 914mm)

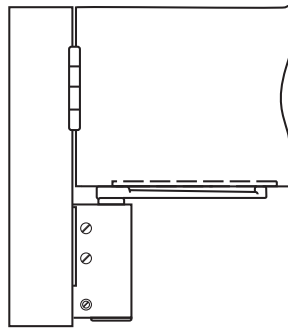


Product Description & Features

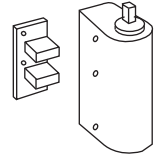
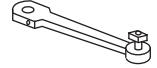
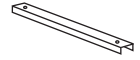
- Recommended for office rail gates, partitions, and lavatory stall doors
- Closer mounts under the door
- 1-3/4" door thickness
- Maximum opening 140°
- Surface mounted to edge of partition with edge wide enough for 1-1/2" bracket
- Butt hinges by others
- Frame carries full weight of door
- Track style arm
- Package includes closer, bracket, and slide track arm
- Painted finishes only
- Not compliant with ICC/ANSI A117.1 low opening force requirements

Compliance

- ANSI C09503

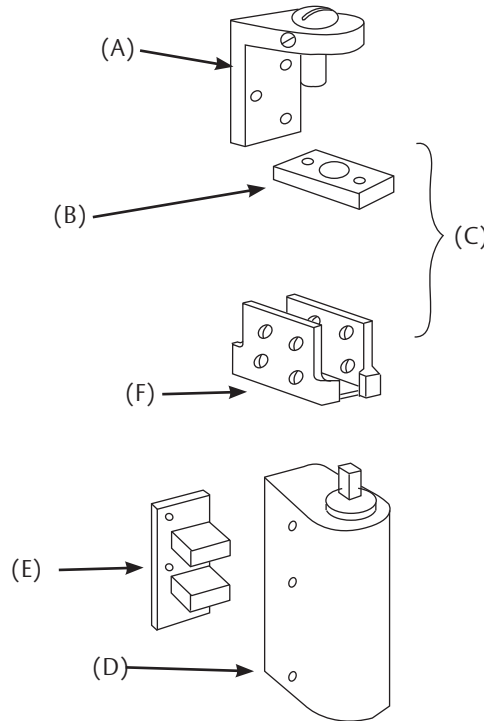


Technical Information



Model 354

- (A) Jamb Portion
01960-*AS
- (B) Gate Portion
35064-*AS
- (E) Bracket
3549000-*
(Includes Closer Mtg.
Screw Kit)



- (C) Top Pivot Package
3541020-*
(Includes A, B and
attaching screws)
- (F) Arm with Screws
3542026-*
- (D) Closer Body
X03540370-*
(Includes E)

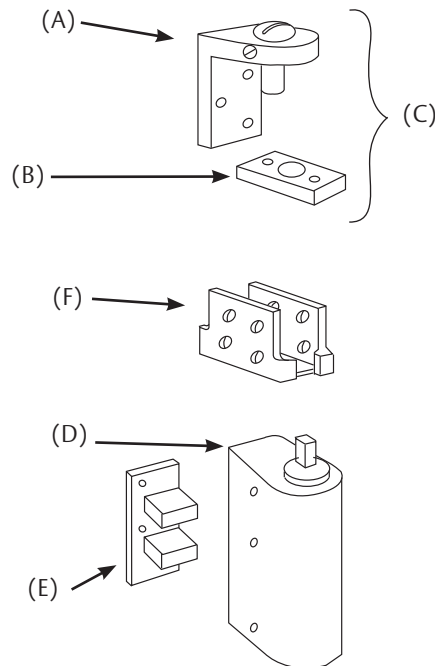
SCREW KITS

Top Pivot Screw Kit
107017-*

Closer Mtg. Screw Kit
107350

Model 355

- (A) Jamb Portion
0490-*AS
- (B) Gate Portion
35064-*AS
- (E) Bracket
3549000-*
(Includes Closer Mtg.
Screw Kit)



- (C) Top Pivot Package
3551020-*
(Includes A,B and
attaching screws)
- (F) Arm with Screws
3542026-*
- (D) Closer Body
X03540370-*
(Includes E)

SCREW KITS

Top Pivot Screw Kit
107017

Closer Mtg. Screw Kit
107350

*specify finish

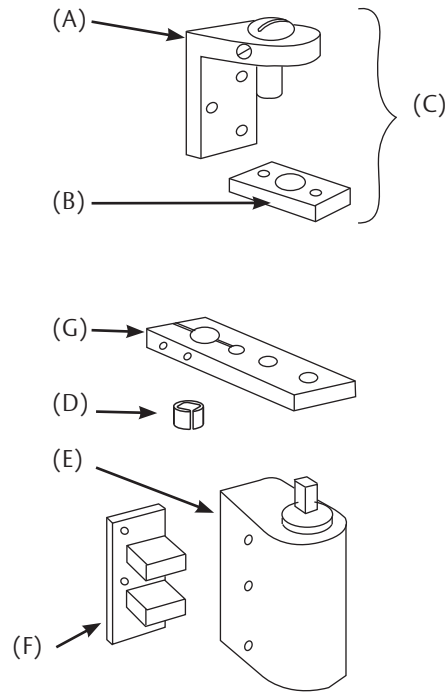
RIXSON®
ASSA ABLOY

Model 356

SPECIALTY CLOSERS

PARTS DRAWINGS

- (A) Jamb Portion
01960-*AS
- (B) Gate Portion
35064-*AS
- (D) Bushing Only
35051
(Included in arm package)
- (F) Bracket
3549000-*
(Includes Closer Mtg. Screw Kit)



- (C) Top Pivot Package
3541020-*
(Includes A, B and attaching screws)
- (G) Arm with Screws
3562020-*
(Includes D and attaching screws)
- (E) Closer Body
X03540370-*
(Includes F)

SCREW KITS

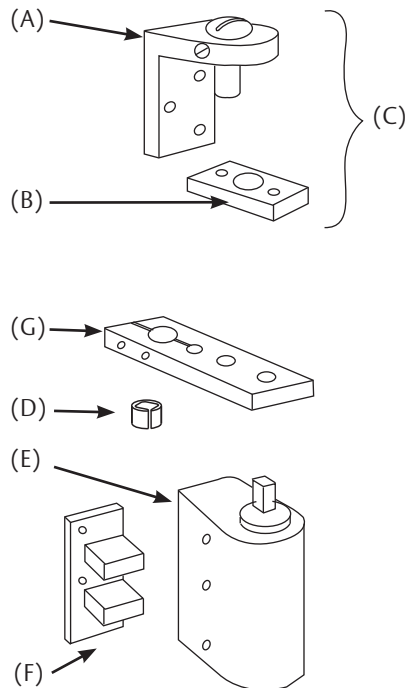
Top Pivot Screw Kit
107017 -*

Arm Screw Kit
107359

Closer Mtg. Screw Kit
107350

Model 357

- (A) Jamb Portion
0490-*AS
- (B) Gate Portion
35064-*AS
- (D) Bushing Only
35051
(Included in arm package)
- (F) Bracket
3549000-*
(Includes Closer Mtg Screw Kit)



- (C) Top Pivot Package
3551020-*
(Includes A, B and attaching screws)
- (G) Arm with Screws
3562020-*
(Includes D and attaching screws)
- (E) Closer Body
X03540370-*
(Includes F)

SCREW KITS

Top Pivot Screw Kit
107017-*

Arm Screw Kit
107359

Closer Mtg. Screw Kit
107350

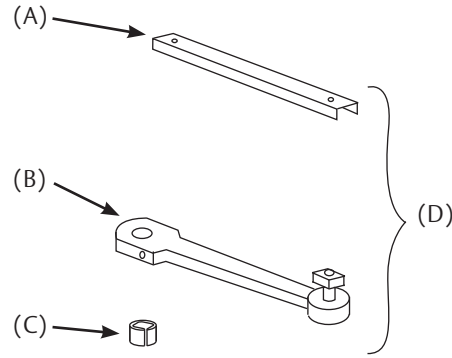
*specify finish

RIXSON®
ASSA ABLOY

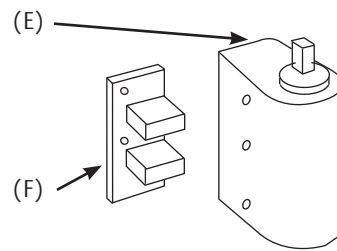
ASSA ABLOY, the global leader
in door opening solutions

Copyright © 2001-2018, ASSA ABLOY Accessories and Door Controls Group, Inc., an ASSA ABLOY Group company. All rights reserved.
Reproduction in whole or in part without the express written permission of ASSA ABLOY Accessories and Door Controls Group, Inc. is prohibited.

- (A) Rail
35510-*
- (B) Arm with Screw & Bushing
35535-*
- (C) Bushing Only
35051
(Included in arm package)
- (F) Bracket
3549000-
(Includes Closer Mtg.
Screw Kit)



- (D) Arm & Rail Package
3592010-
(Includes A, B, C and
attaching screws)
- (E) Closer Body
X03540370-
(Includes F)



*specify finish

SCREW KITS

Arm Screw Kit
107003

Closer Mtg. Screw Kit
107350

RIXSON®
ASSA ABLOY

Application

- Single Acting, Handed
- Interior Security Doors
- Weight to 650 lbs.
- Door Width up to 4'0" (1219mm)



Product Description & Features

- Recommended for non cell doors in detention facilities or psychiatric centers
- Non-hold open only
 - FA180 top pivot included
 - FA19 intermediate pivot recommended; order separately
 - Door will swing to 180°, trim permitting
 - Built-in hydraulic backcheck at 160°
 - Cast iron cement case with cast in extensions for positive anchorage in floor
 - Solid 1/4" (6mm) thick steel floor plate
 - Cast-in lip to provide positive containment of cement case in floor
 - Sealed closer standard
 - Heavy-duty forged bottom arm
 - Adjustable closing speed
 - Doors 60" (1524mm) to 90" (2286mm) in height should use one intermediate pivot. Every additional 30" (762mm) of door height warrants another intermediate pivot
 - Delayed action not available
 - Furnished with Torx® screws
 - PH option not available

Optional Features

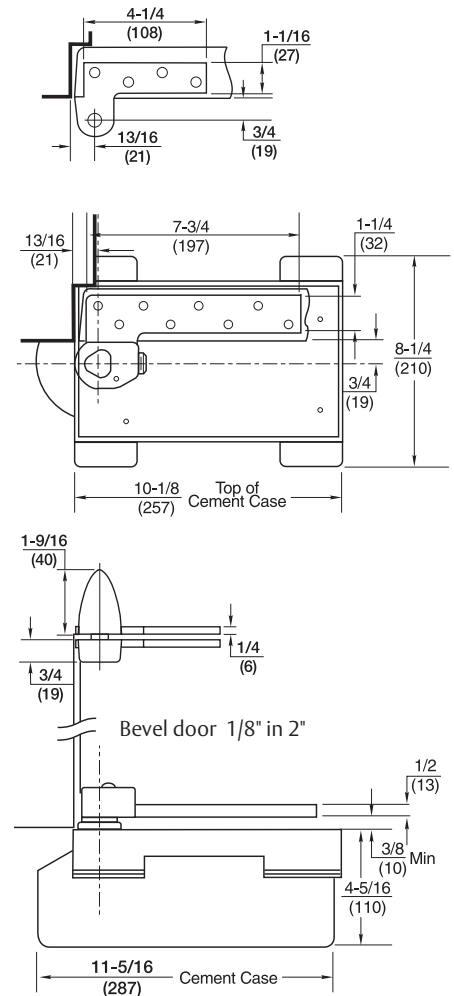
- Extended spindles available in 1/2" increments up to 2" longer than standard

Compliance

- This closer is for fire-rated openings (up to 3 hour assemblies). Only non-hold open closers are used. FA19 intermediate pivot required: order separately.

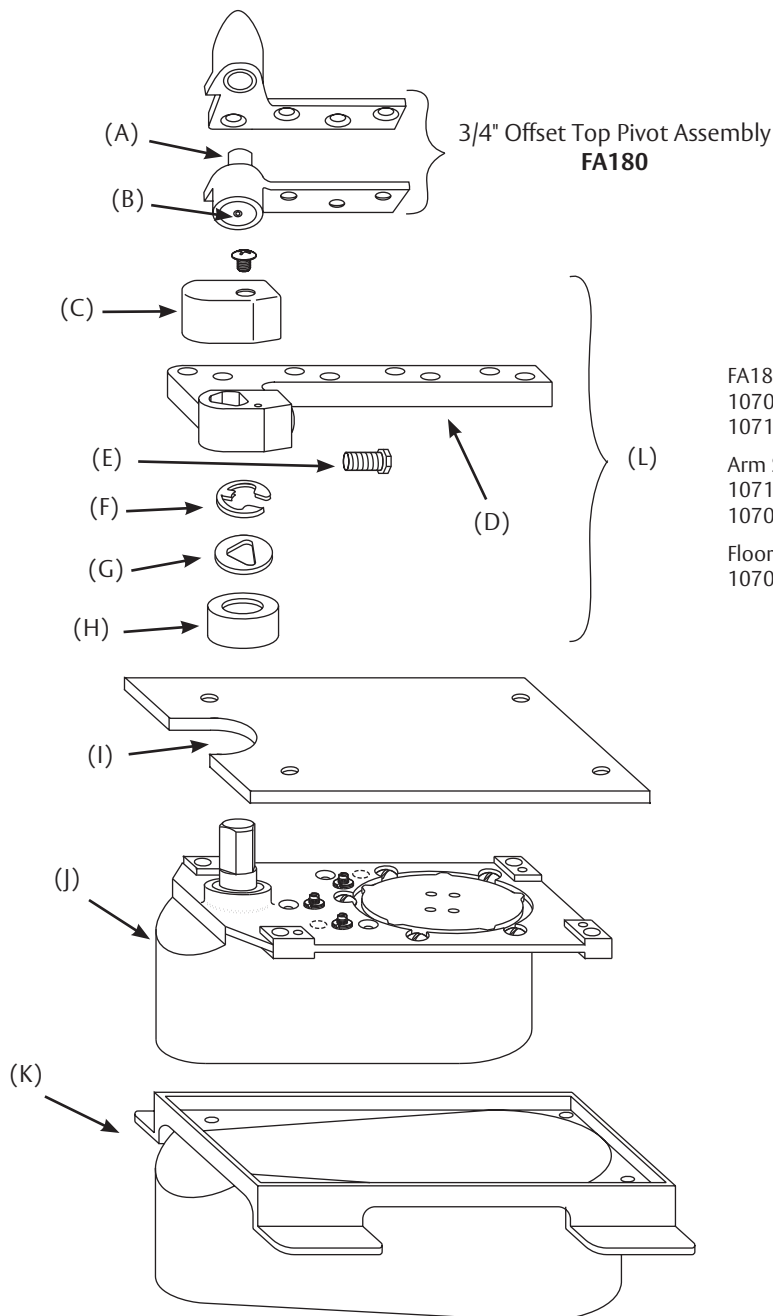
Technical Information

Frame stop required



Right hand shown
3/4" offset only

- (A) Pivot Stud
181770-Asy
- (B) Finish Cap
181778 -*
- (C) Arm Cap & Screw
012142R*T (RH, BRS)
012142L*T (LH, BRS)
012144R*T (RH, SS)
012144L*T (LH, SS)
- (D) Arm x Locking Screw
18550-Asy (RH)
18650-Asy (LH)
- (E) Arm Locking Screw Only
88905-PKG (5)
- (F) Arm Shims
275065-PKG (5)
- (G) Arm Bearing Washer
275062-PKG (5)
- (H) Spindle Shoulder Collar
259000 -*
- (I) Floor Plate with Screws
274056 -*
- (J) Closer Body
(Specify Complete
Model No. x LAP)
- (K) Cement Case with Screws
253001SEC



- (L) Bottom Arm Package
252056R* (RH)
252056L* (LH)
(Includes C, D, H and
attaching screws)

FA180 Torx® Screw Kit
107014 - *T Machine (2 required)
107114 - *T Wood (2 required)

Arm Screw Kit
107144 Machine (2 required)
107048 Wood (2 required)

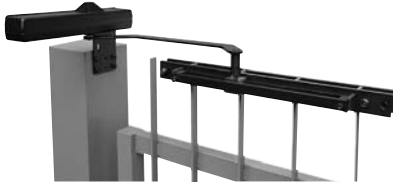
Floor Plate Screw Kit
107021 -*

*specify finish

RIXSON®
ASSA ABLOY

Application

- Single Acting
- Exterior Ornamental Iron Gates
- Weight to 250 lbs.
- Gate Maximum 4'6" x 10'0"
(1372 x 3048mm)

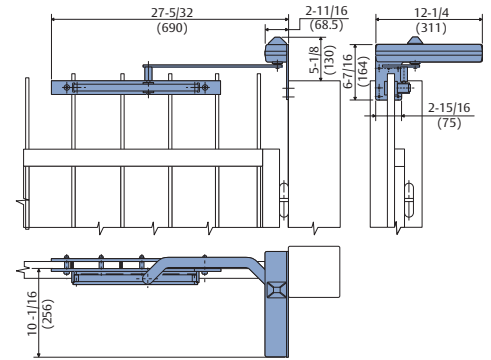


Product Description & Features

Recommended for exterior gates on high-end residences and commercial building campuses.

- Includes closer body, mounting bracket, arm and slide track
- Track has pass thru hole to avoid debris build-up
- Components are rust-resistant
- Surface closer has adjustable latch speed, closing speed and backcheck
- May be mounted on cross-member or spokes
- Hanging means by others
- All weather fluid
- All machine screws
- Black finish only

Technical Information



QUICK REFERENCE OF OPTIONS/HOW TO ORDER

Quick Reference of Options

Prefix	Model	Degree of Hold Open	Holding Options	General Options	Fire Rated	Handed	Maximum Door Weight
PH	10	90	A	Extended Spindle	No	No	125
PH	12		N	Extended Spindle	No	No	125
	15	90	A	Extended Spindle	No	No	125
	16		N	Extended Spindle	No	No	125
	354	90	A		No	No	75
	355	90	A		No	No	75
	356	90	A		No	No	75
	357	90	A		No	No	75
	359		N		No	No	75
	SEC27-180		N	Extended Spindle	Yes	Yes	650
	1351		N				250

How To Order

PH Prefix	10 Model	A Hold Open	LTP Suffix	Hand	626 Finish
PH Lighter Spring (ADA) (models 10 and 12 only)		N Non-Hold Open A Automatic Hold Open		Blank Double Acting or Non Handed RH Right Hand LH Left Hand	
10	Duo Chek® (Hold Open)		Extended Spindles		350 Gate Closer
12	Duo Chek® (Non-Hold Open)		LAP Closer Body Only		689 Sprayed Alum
15	Duo Chek® (Hold Open)		LFP Less Floor Plate		690 Sprayed Dk Brz
16	Duo Chek® (Non-Hold Open)		LCC Less Cement Case		691 Sprayed Lt Brz
354	Gate		LTP Less Top Pivot		696 Sprayed Brass
355	Gate		SPLO Special Layout #		1351 Gate Closers
356	Gate				622 Flat Black Only
357	Gate				Remainder
359	Gate				605 Bright Brass
SEC27-180	Security				606 Satin Brass
1351	Exterior Gate				611 Bright Bronze
					612 Satin Bronze
					613 Dark Bronze
					613E Dark Oxidized Satin Bronze - equivalent
					619 Satin Nickel
					622 Flat Black
					BSP Black Suede Powder

*specify finish

RIXSON®
ASSA ABLOY



ASSA ABLOY is the global leader in door opening solutions, dedicated to satisfying end-user needs for security, safety and convenience

RIXSON
ASSA ABLOY

CONTACT US AT:

Rixson®
3000 Highway 74 East
Monroe, NC 28112
Tel: 800-457-5670
Fax: 800-221-0489

ASSA ABLOY Door Security Solutions Canada
160 Four Valley Drive
Vaughan, Ontario, L4K 4T9 Canada
Tel: 800-461-3007
Fax: 800-461-8989

For a complete listing of products and applications please visit our web site.
www.rixson.com
assaabloydss.ca