

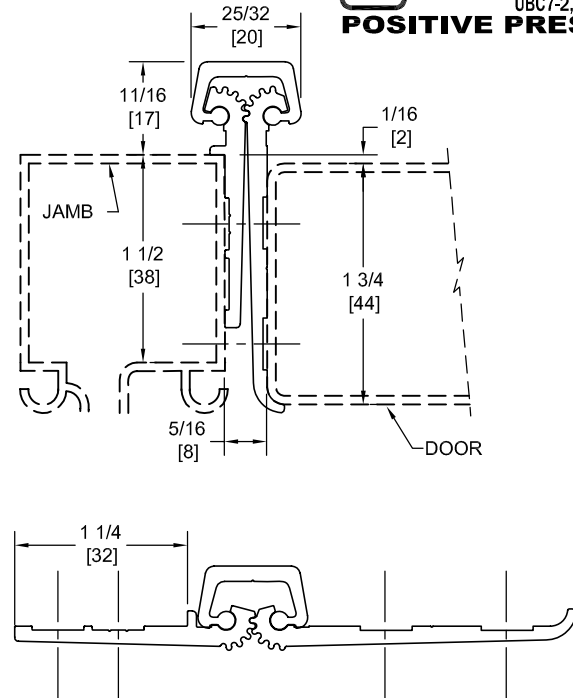
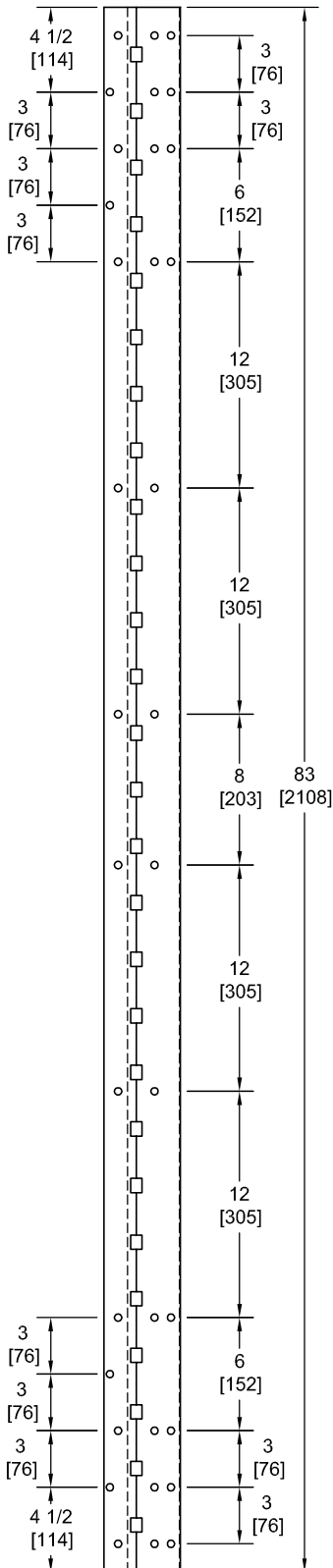
# SPFM83-HD

## TEMPLATE FULL MORTISE CONTINUOUS GEARED ALUMINUM HINGE



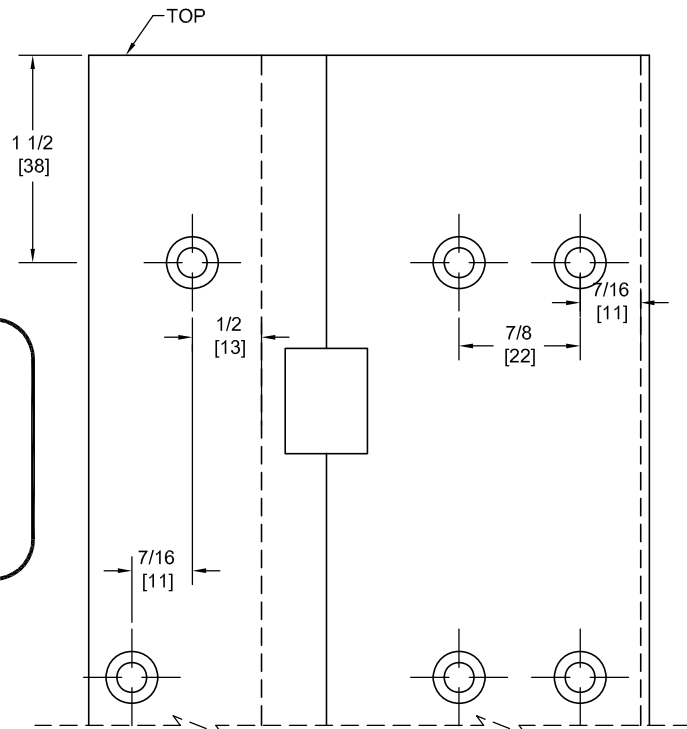
**Fire Rated**  
Classified & Listed to  
meet the requirements of  
Standards UL10B, UL10C,  
UBC7-2, Part I & BS476

**POSITIVE PRESSURE**



DO NOT SCALE

**\*\* CAUTION \*\***  
Due To Frame  
Installation  
Variations,  
Pre-drilling  
For Fasteners  
Is Not  
Recommended



PEMKO Template Full Mortise Continuous Geared Aluminum Hinges CSPFM83-HD/DSPFM83-HD are made to conform to this drawing.  
PEMKO CSPFM83-HD/DSPFM83-HD hinges can be supplied with Electric Functions - See Electrical Application Section.  
Machine Screw Size - No. 12-24 x 7/16 FHUC Thread-forming.  
PEMKO Continuous Geared Aluminum Hinges are Listed for fire applications up to 90 minutes without special preparation.

Concealed Circuit (CC) Application

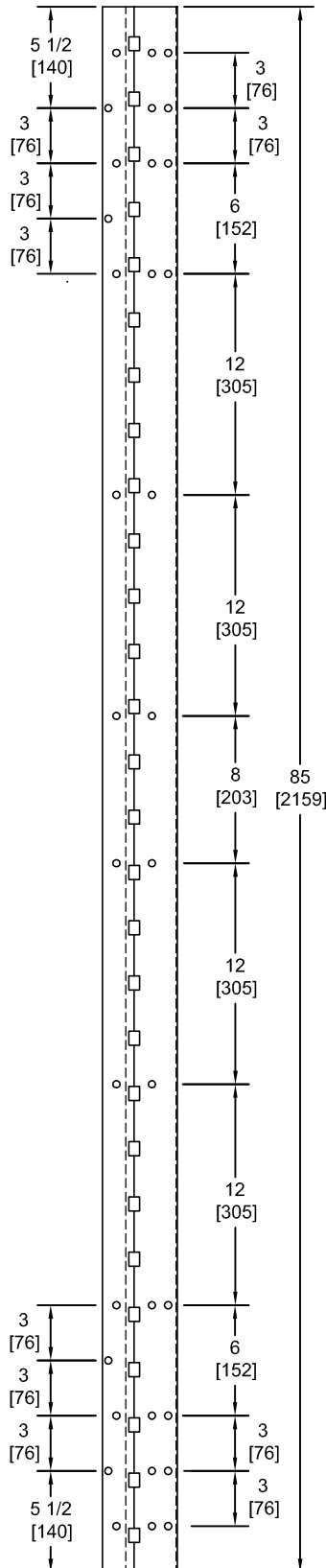
SEE ELECTRICAL APPLICATION SECTION  
IN TECHNICAL MANUAL

Magnetic Monitor (MM) Application

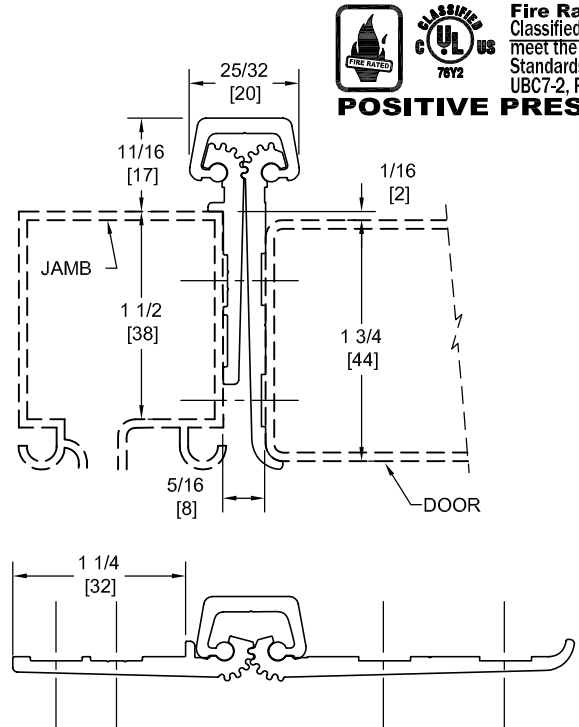
SEE ELECTRICAL APPLICATION SECTION  
IN TECHNICAL MANUAL

# SPFM85-HD

## TEMPLATE FULL MORTISE CONTINUOUS GEARED ALUMINUM HINGE



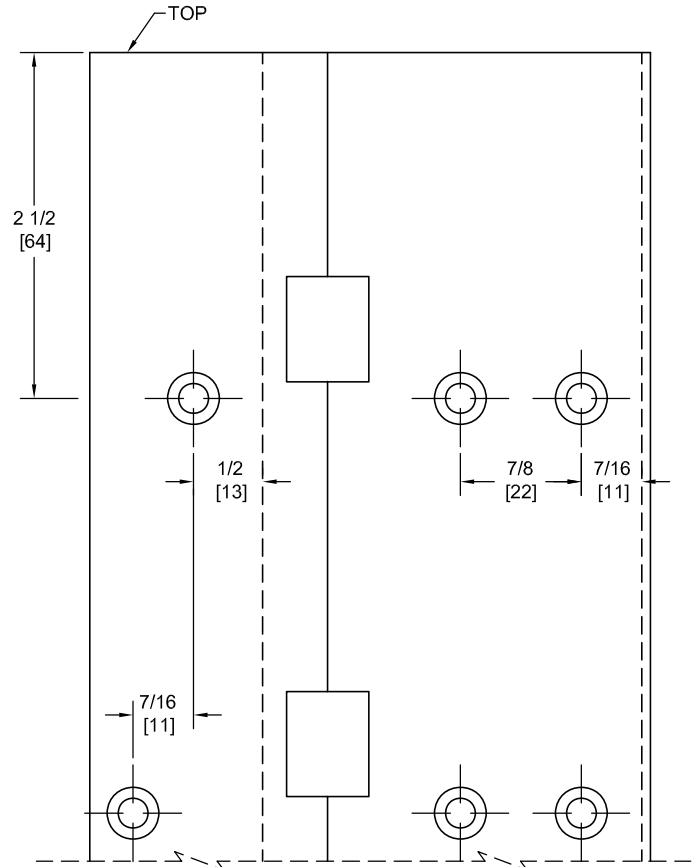
**\*\* CAUTION \*\***  
Due To Frame  
Installation  
Variations,  
Pre-drilling  
For Fasteners  
Is Not  
Recommended



**Fire Rated**  
Classified & Listed to  
meet the requirements of  
Standards UL10B, UL10C,  
UBC7-2, Part I & BS476

**POSITIVE PRESSURE**

DO NOT SCALE



PEMKO Template Full Mortise Continuous Geared Aluminum Hinges CSPFM85-HD/DSPFM85-HD are made to conform to this drawing.

PEMKO CSPFM85-HD/DSPFM85-HD hinges can be supplied with Electric Functions - See Electrical Application Section.

Machine Screw Size - No. 12-24 x 7/16 FHUC Thread-forming.

PEMKO Continuous Geared Aluminum Hinges are Listed for fire applications up to 90 minutes without special preparation.

Manufacturer reserves the right to make changes without formal notice.

Concealed Circuit (CC) Application

SEE ELECTRICAL APPLICATION SECTION  
IN TECHNICAL MANUAL

Magnetic Monitor (MM) Application

SEE ELECTRICAL APPLICATION SECTION  
IN TECHNICAL MANUAL

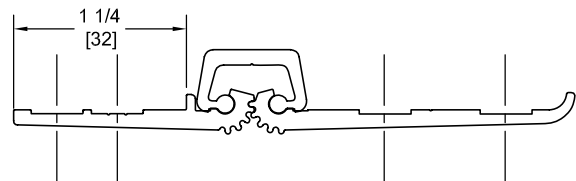
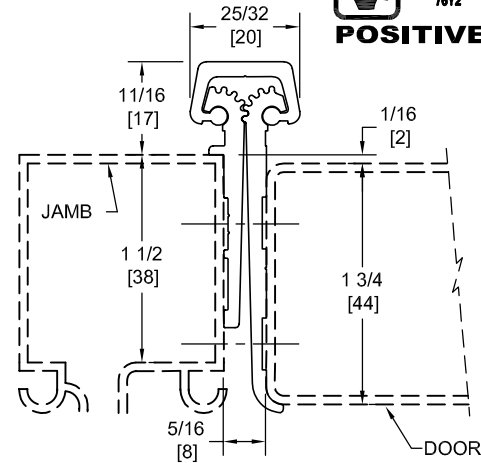
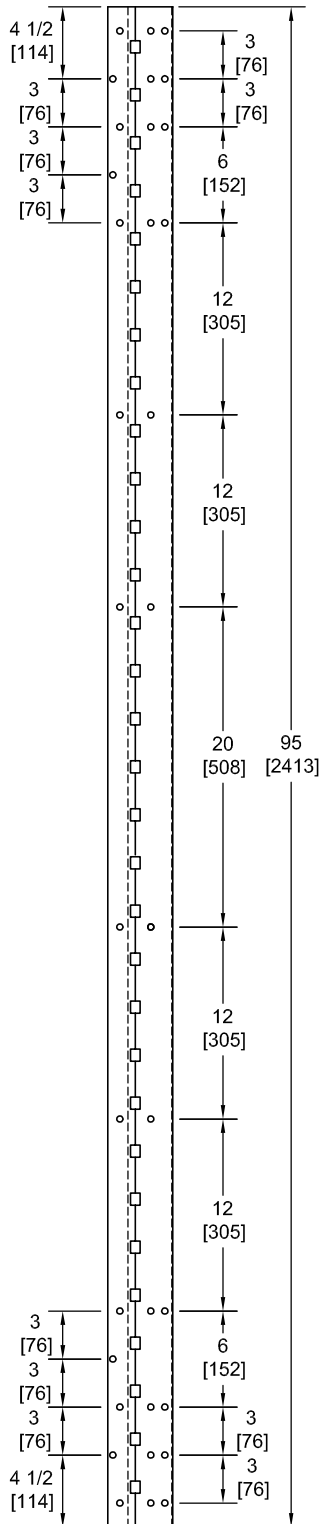
# SPFM95-HD

## TEMPLATE FULL MORTISE CONTINUOUS GEARED ALUMINUM HINGE



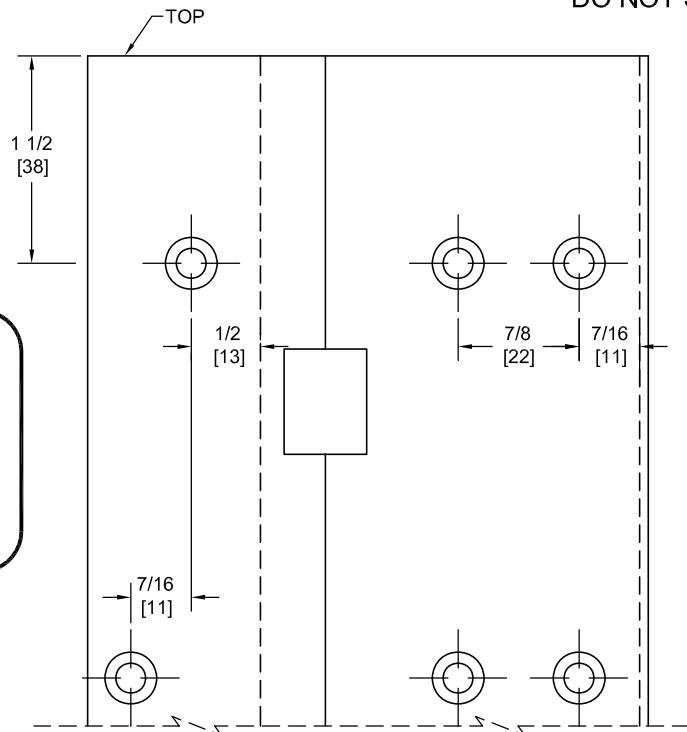
**Fire Rated**  
Classified & Listed to  
meet the requirements of  
Standards UL10B, UL10C,  
UBC7-2, Part I & BS476

**POSITIVE PRESSURE**



DO NOT SCALE

**\*\* CAUTION \*\***  
Due To Frame  
Installation  
Variations,  
Pre-drilling  
For Fasteners  
Is Not  
Recommended



PEMKO Template Full Mortise Continuous Geared Aluminum Hinges CSPFM95-HD/DSPFM95-HD are made to conform to this drawing.  
PEMKO CSPFM95-HD/DSPFM95-HD hinges can be supplied with Electric Functions - See Electrical Application Section.  
Machine Screw Size - No. 12-24 x 7/16 FHUC Thread-forming.  
PEMKO Continuous Geared Aluminum Hinges are Listed for fire applications up to 90 minutes without special preparation.

Concealed Circuit (CC) Application

SEE ELECTRICAL APPLICATION SECTION  
IN TECHNICAL MANUAL

Magnetic Monitor (MM) Application

SEE ELECTRICAL APPLICATION SECTION  
IN TECHNICAL MANUAL

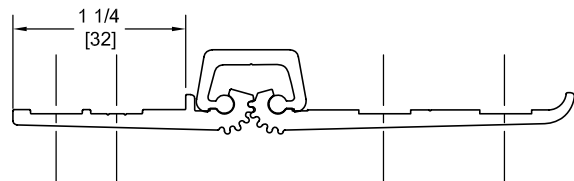
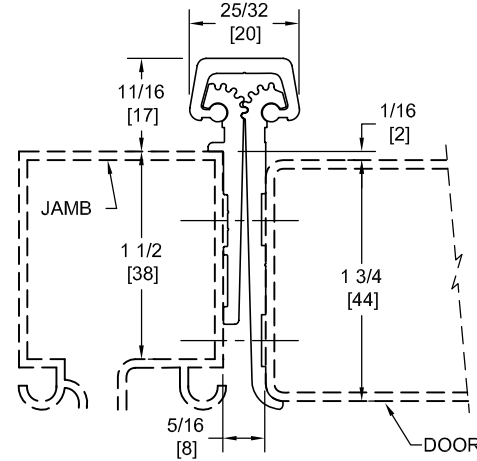
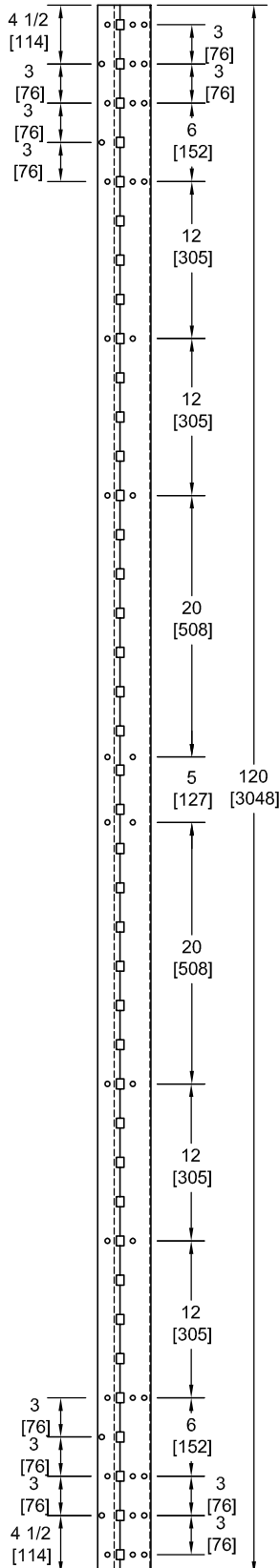
# SPFM120-HD

## TEMPLATE FULL SURFACE CONTINUOUS GEARED ALUMINUM HINGE



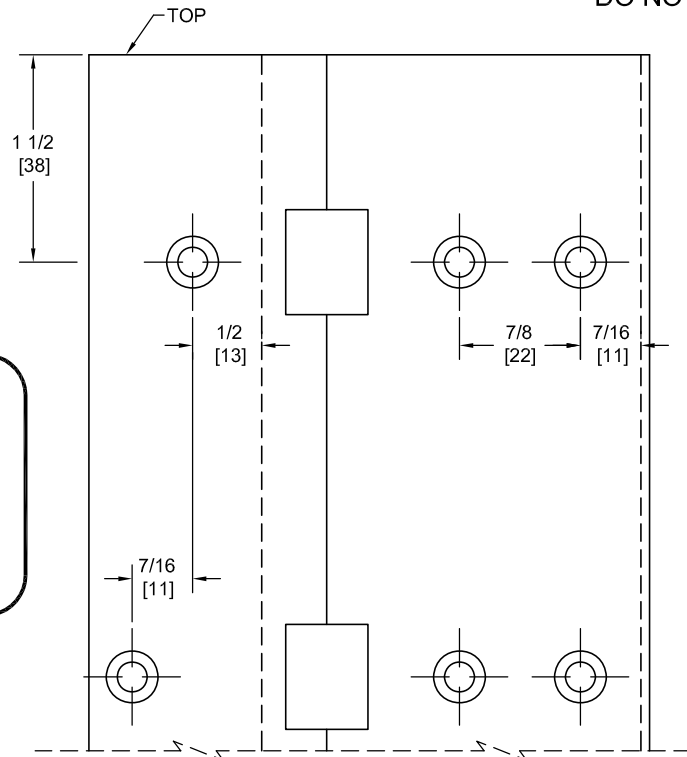
**Fire Rated**  
Classified & Listed to  
meet the requirements of  
Standards UL10B, UL10C,  
UBC7-2, Part I & BS476

**POSITIVE PRESSURE**



DO NOT SCALE

**\*\* CAUTION \*\***  
Due To Frame  
Installation  
Variations,  
Pre-drilling  
For Fasteners  
Is Not  
Recommended



PEMKO Template Full Mortise Continuous Geared Aluminum Hinges CSPFM120-HD/DSPFM120-HD are made to conform to this drawing.

PEMKO CSPFM120-HD/DSPFM120-HD hinges can be supplied with Electric Functions - See Electrical Application Section.

Machine Screw Size - No. 12-24 x 7/16 FHUC Thread-forming.

PEMKO Continuous Geared Aluminum Hinges are Listed for fire applications up to 90 minutes without special preparation.

Concealed Circuit (CC) Application

SEE ELECTRICAL APPLICATION SECTION  
IN TECHNICAL MANUAL

Magnetic Monitor (MM) Application

SEE ELECTRICAL APPLICATION SECTION  
IN TECHNICAL MANUAL