

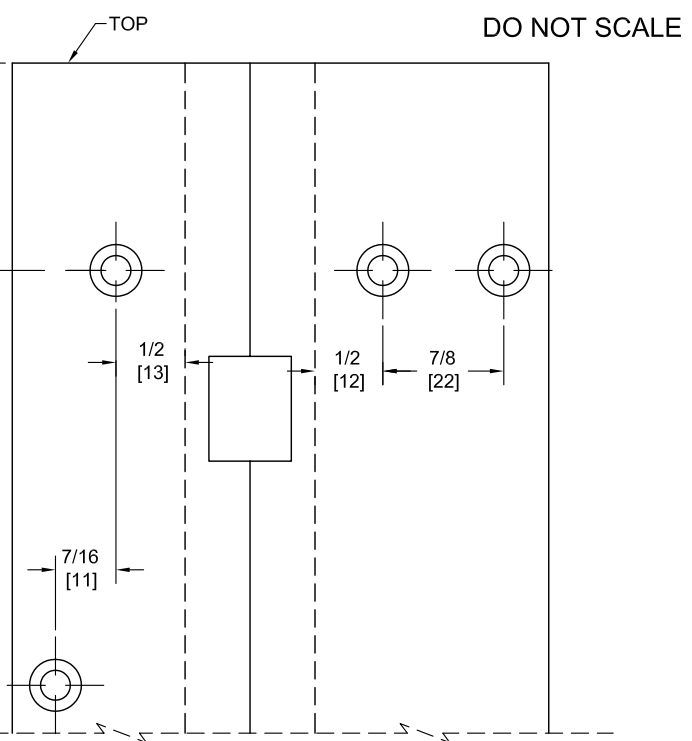
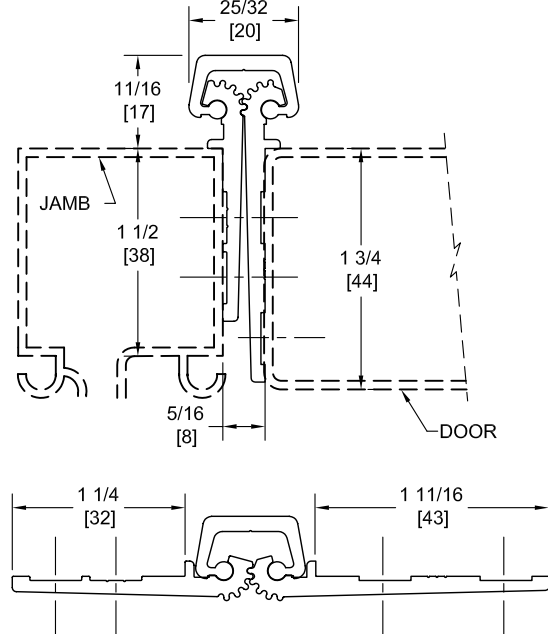
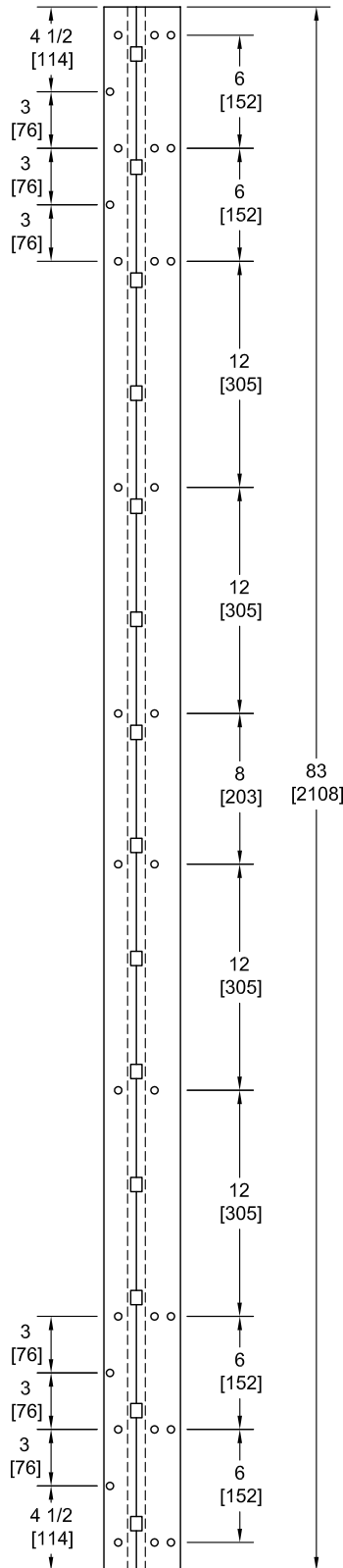
SPFM83SLF

TEMPLATE FULL MORTISE CONTINUOUS GEARED ALUMINUM HINGE



Fire Rated
Classified & Listed to
meet the requirements of
Standards UL10B, UL10C,
UBC7-2, Part I & BS476

POSITIVE PRESSURE



**** CAUTION ****
Due To Frame
Installation
Variations,
Pre-drilling
For Fasteners
Is Not
Recommended

PEMKO Template Full Mortise Continuous Geared Aluminum Hinges CSPFM83SLF/DSPFM83SLF are made to conform to this drawing. PEMKO CSPFM83SLF/DSPFM83SLF hinges can be supplied with Electric Functions - See Electrical Application Section. Machine Screw Size - No. 12-24 x 7/16 FHUC Thread-forming. PEMKO Continuous Geared Aluminum Hinges are Listed for fire applications up to 90 minutes without special preparation.

Concealed Circuit (CC) Application

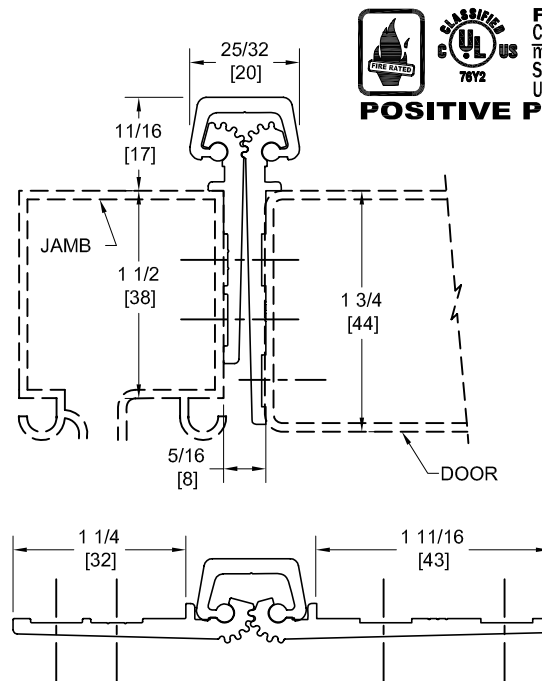
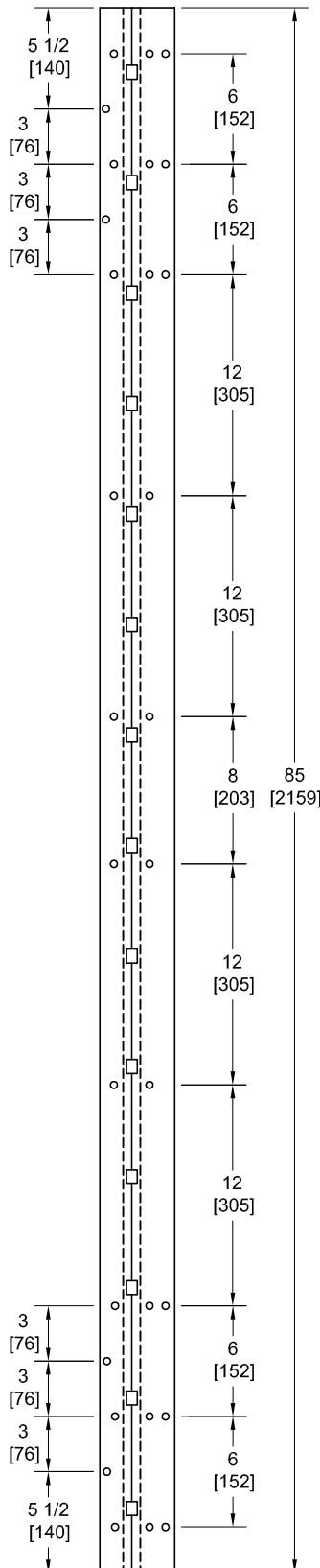
SEE ELECTRICAL APPLICATION SECTION
IN TECHNICAL MANUAL

Magnetic Monitor (MM) Application

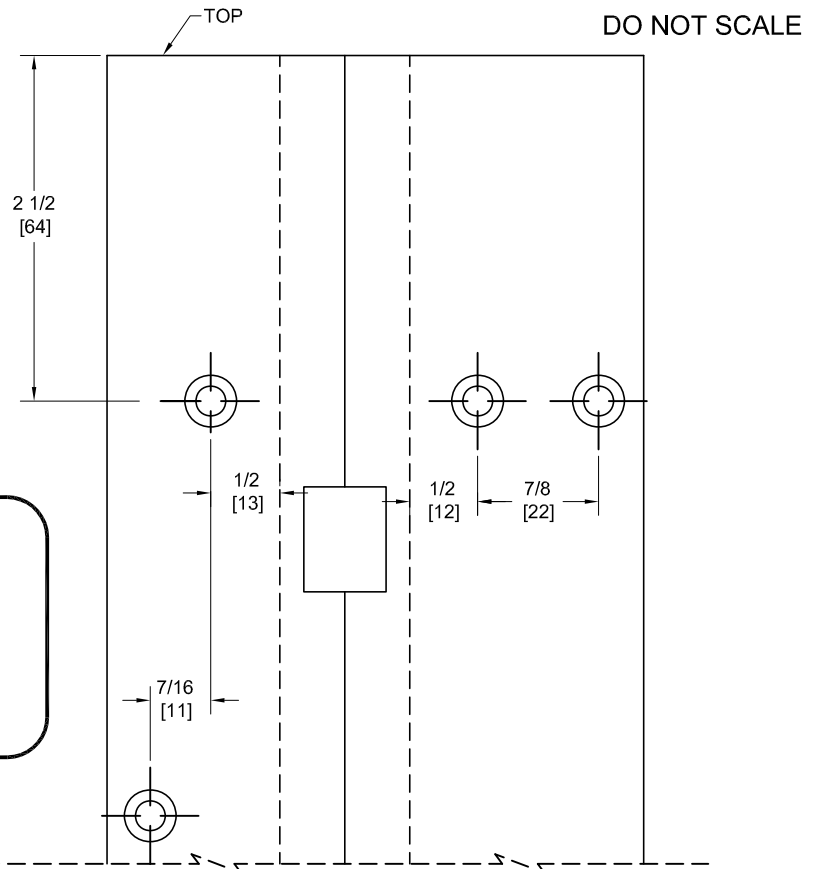
SEE ELECTRICAL APPLICATION SECTION
IN TECHNICAL MANUAL

SPFM85SLF

TEMPLATE FULL MORTISE CONTINUOUS GEARED ALUMINUM HINGE



Fire Rated
Classified & Listed to
meet the requirements of
Standards UL10B, UL10C,
UBC7-2, Part I & BS476
POSITIVE PRESSURE



PEMKO Template Full Mortise Continuous Geared Aluminum Hinges CSPFM85SLF/DSPFM85SLF are made to conform to this drawing.

PEMKO CSPFM85SLF/DSPFM85SLF hinges can be supplied with Electric Functions - See Electrical Application Section.

Machine Screw Size - No. 12-24 x 7/16 FHUC Thread-forming.

PEMKO Continuous Geared Aluminum Hinges are Listed for fire applications up to 90 minutes without special preparation.

Concealed Circuit (CC) Application

SEE ELECTRICAL APPLICATION SECTION
IN TECHNICAL MANUAL

Magnetic Monitor (MM) Application

SEE ELECTRICAL APPLICATION SECTION
IN TECHNICAL MANUAL

Effective Date: November 2003

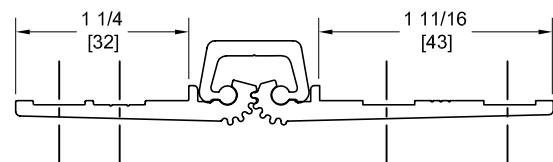
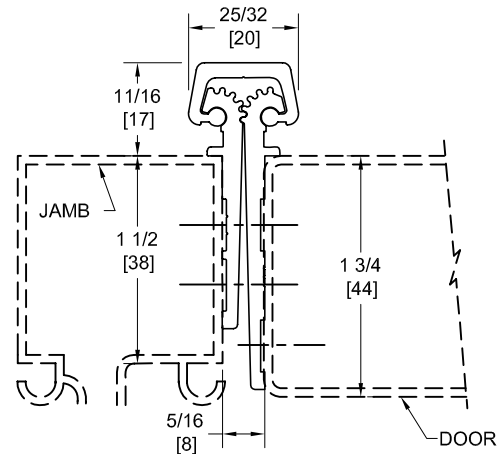
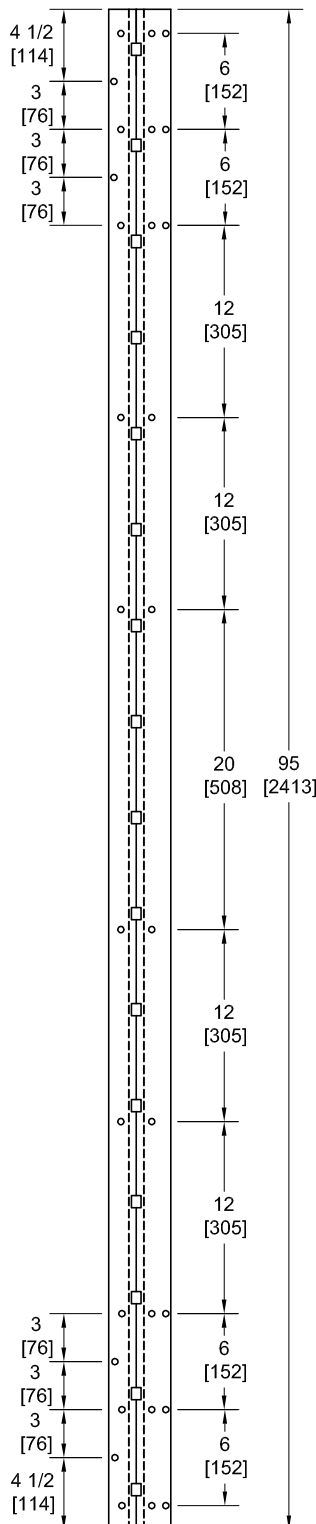
SPFM95SLF

TEMPLATE FULL MORTISE CONTINUOUS GEARED ALUMINUM HINGE

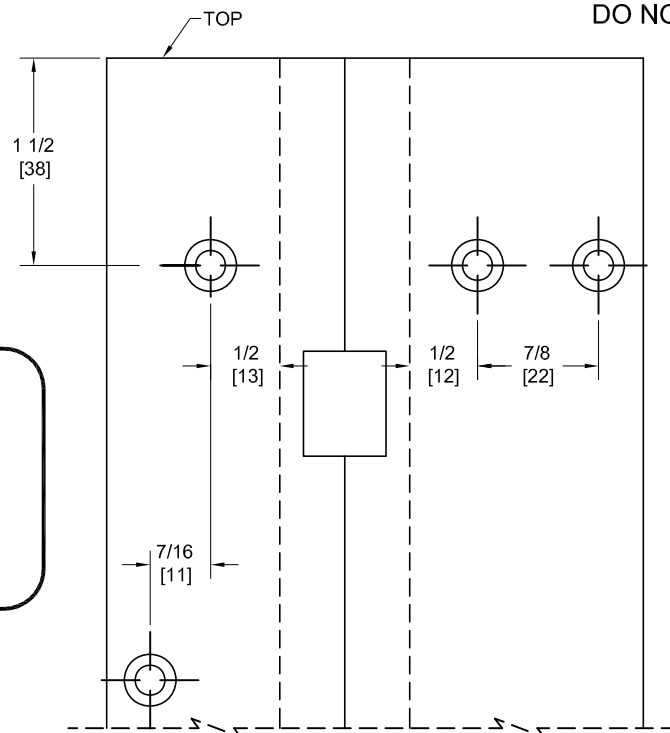


Fire Rated
Classified & Listed to
meet the requirements of
Standards UL10B, UL10C,
UBC7-2, Part I & BS476

POSITIVE PRESSURE



DO NOT SCALE



**** CAUTION ****
Due To Frame
Installation
Variations,
Pre-drilling
For Fasteners
Is Not
Recommended

PEMKO Template Full Mortise Continuous Geared Aluminum Hinges CSPFM95SLF/DSPFM95SLF are made to conform to this drawing.
PEMKO CSPFM95SLF/DSPFM95SLF hinges can be supplied with Electric Functions - See Electrical Application Section.
Machine Screw Size - No. 12-24 x 7/16 FHUC Thread-forming.
PEMKO Continuous Geared Aluminum Hinges are Listed for fire applications up to 90 minutes without special preparation.

Manufacturer reserves the right to make changes without formal notice.

Continued on Back...

Concealed Circuit (CC) Application

SEE ELECTRICAL APPLICATION SECTION
IN TECHNICAL MANUAL

Magnetic Monitor (MM) Application

SEE ELECTRICAL APPLICATION SECTION
IN TECHNICAL MANUAL

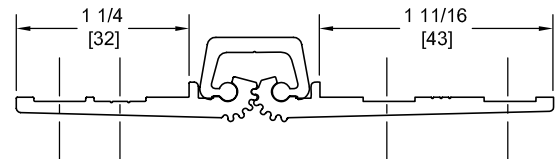
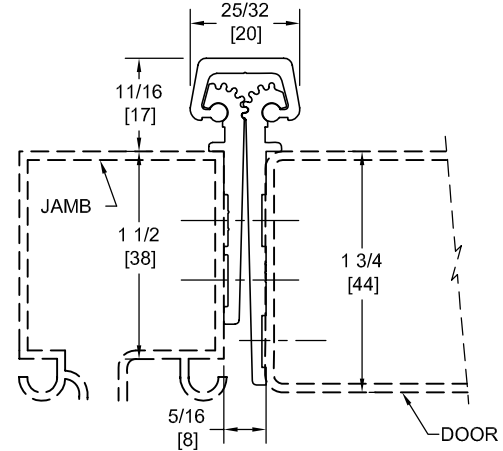
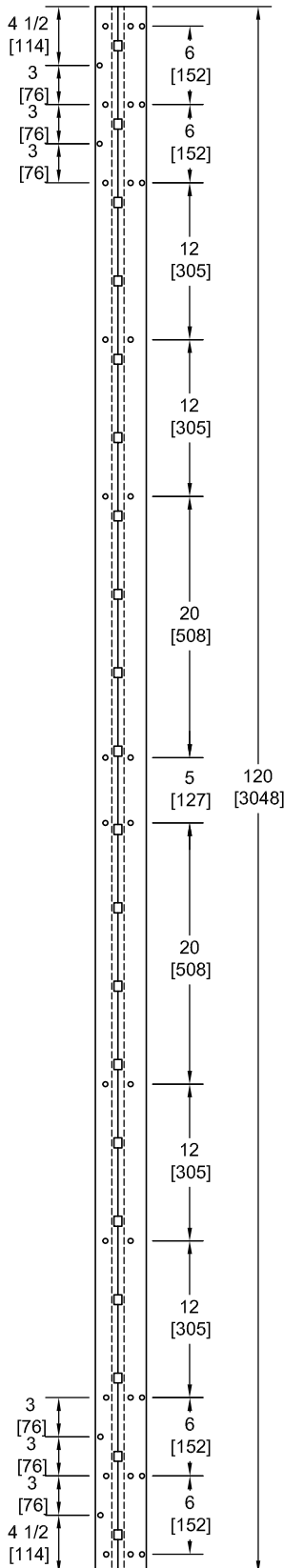
SPFM120SLF

TEMPLATE FULL SURFACE CONTINUOUS GEARED ALUMINUM HINGE



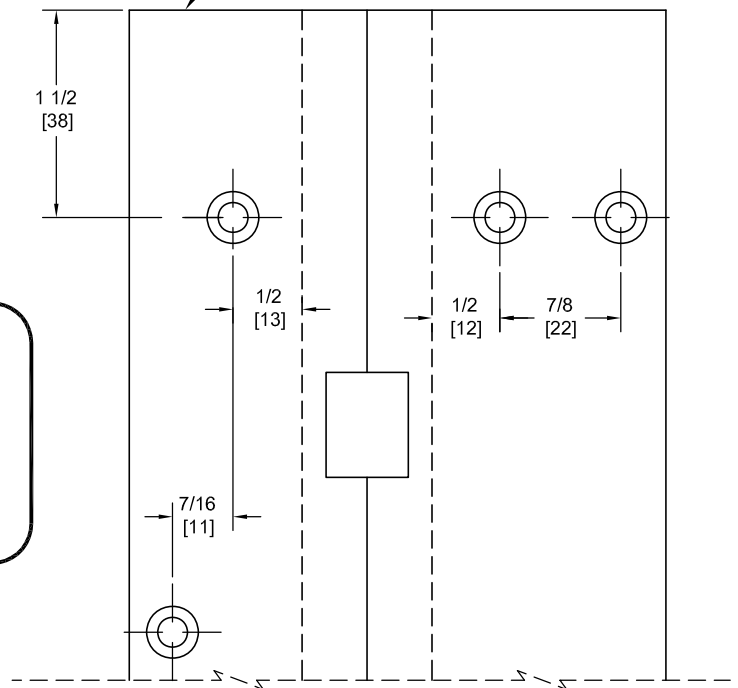
Fire Rated
Classified & Listed to
meet the requirements of
Standards UL10B, UL10C,
UBC7-2, Part I & BS476

POSITIVE PRESSURE



DO NOT SCALE

**** CAUTION ****
Due To Frame
Installation
Variations,
Pre-drilling
For Fasteners
Is Not
Recommended



PEMKO Template Full Mortise Continuous Geared Aluminum Hinges CSPFM120SLF/DSPFM120SLF are made to conform to this drawing.
PEMKO CSPFM120SLF/DSPFM120SLF hinges can be supplied with Electric Functions - See Electrical Application Section.
Machine Screw Size - No. 12-24 x 7/16 FHUC Thread-forming.
PEMKO Continuous Geared Aluminum Hinges are Listed for fire applications up to 90 minutes without special preparation.

Manufacturer reserves the right to make changes without formal notice.

Concealed Circuit (CC) Application

SEE ELECTRICAL APPLICATION SECTION
IN TECHNICAL MANUAL

Magnetic Monitor (MM) Application

SEE ELECTRICAL APPLICATION SECTION
IN TECHNICAL MANUAL