

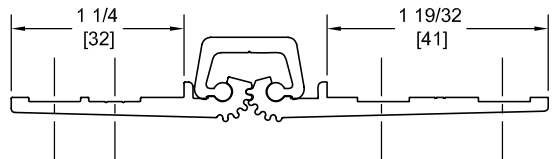
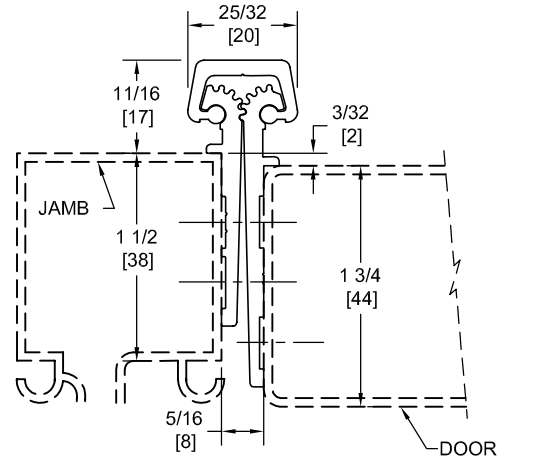
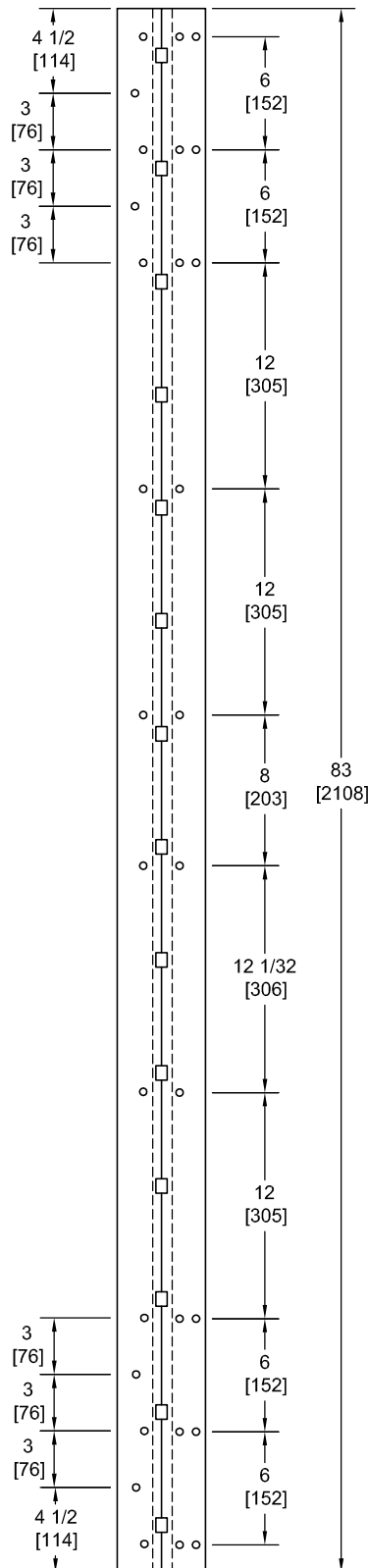
SPFM83SLI

TEMPLATE FULL MORTISE CONTINUOUS GEARED ALUMINUM HINGE



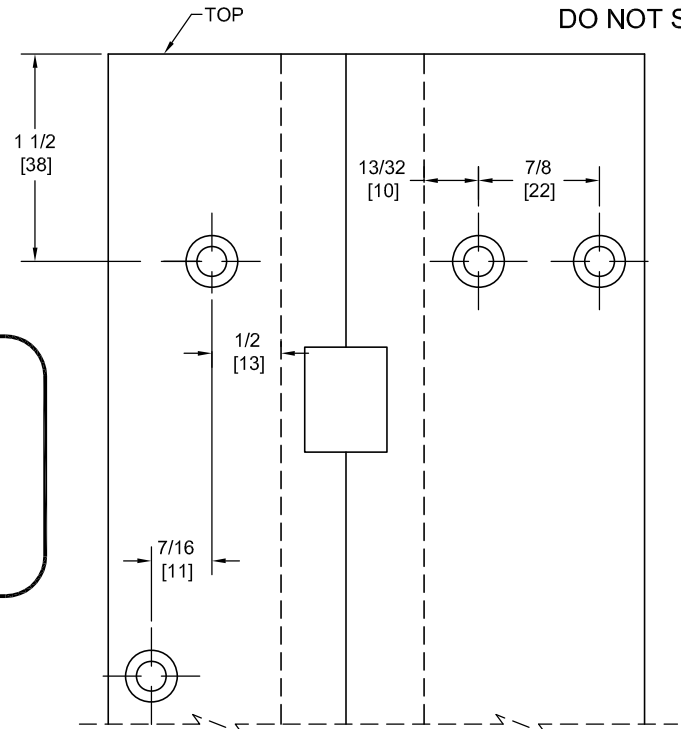
Fire Rated
Classified & Listed to
meet the requirements of
Standards UL10B, UL10C,
UBC7-2, Part I & BS476

POSITIVE PRESSURE



DO NOT SCALE

**** CAUTION ****
Due To Frame
Installation
Variations,
Pre-drilling
For Fasteners
Is Not
Recommended



PEMCO Template Full Mortise Continuous Geared Aluminum Hinges CSPFM83SLI/DSPFM83SLI are made to conform to this drawing.

PEMCO CSPFM83SLI/DSPFM83SLI hinges can be supplied with Electric Functions - See Electrical Application Section.

Machine Screw Size - No. 12-24 x 7/16 FHUC Thread-forming.

PEMCO Continuous Geared Aluminum Hinges are Listed for fire applications up to 90 minutes without special preparation.

Concealed Circuit (CC) Application

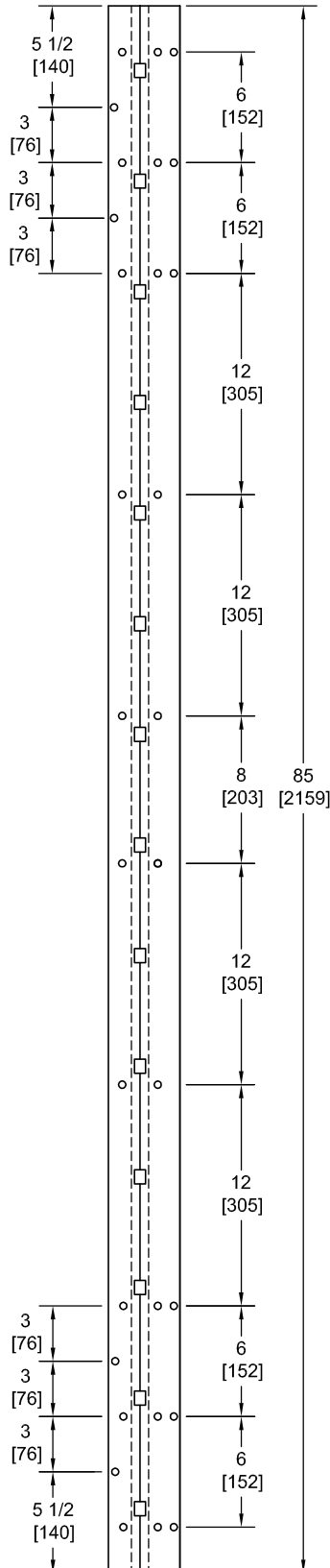
SEE ELECTRICAL APPLICATION SECTION
IN TECHNICAL MANUAL

Magnetic Monitor (MM) Application

SEE ELECTRICAL APPLICATION SECTION
IN TECHNICAL MANUAL

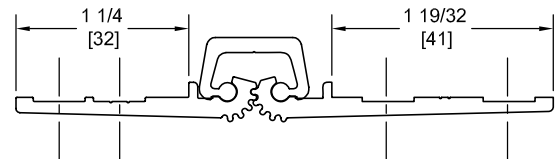
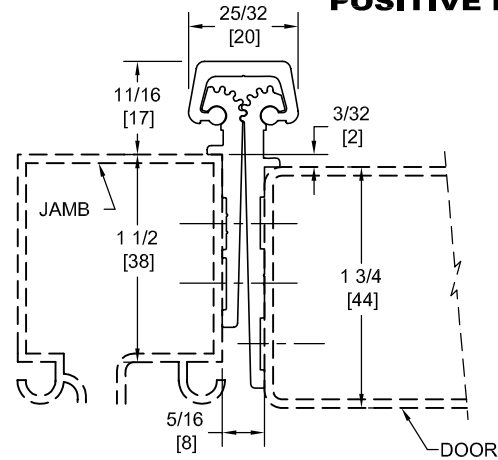
SPFM85SLI

TEMPLATE FULL MORTISE CONTINUOUS GEARED ALUMINUM HINGE

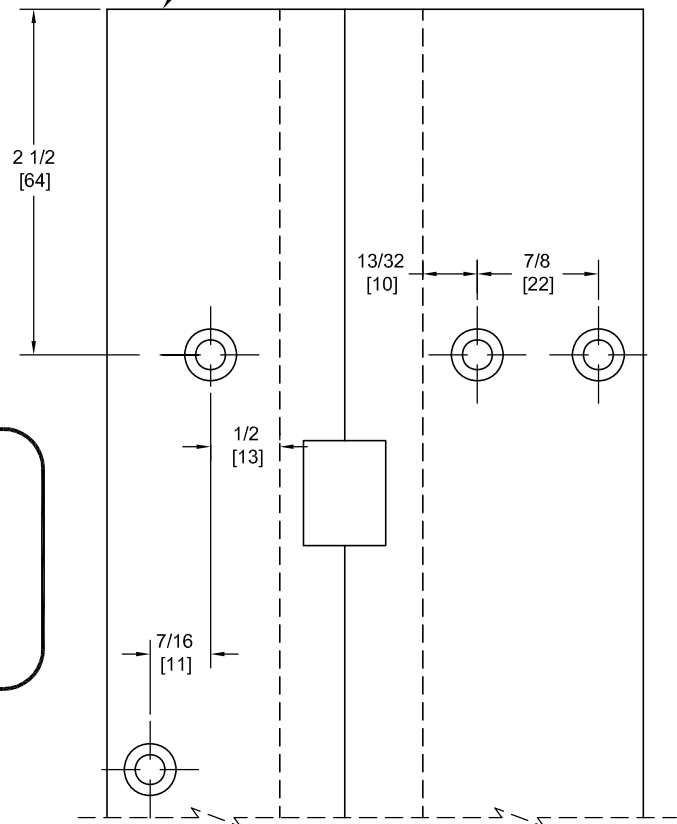


Fire Rated
Classified & Listed to
meet the requirements of
Standards UL10B, UL10C,
UBC7-2, Part I & BS476

POSITIVE PRESSURE



DO NOT SCALE



**** CAUTION ****
Due To Frame
Installation
Variations,
Pre-drilling
For Fasteners
Is Not
Recommended

PEMKO Template Full Mortise Continuous Geared Aluminum Hinges CSPFM85SLI/DSPFM85SLI are made to conform to this drawing.
PEMKO CSPFM85SLI/DSPFM85SLI hinges can be supplied with Electric Functions - See Electrical Application Section.
Machine Screw Size - No. 12-24 x 7/16 FHUC Thread-forming.
PEMKO Continuous Geared Aluminum Hinges are Listed for fire applications up to 90 minutes without special preparation.

Concealed Circuit (CC) Application

SEE ELECTRICAL APPLICATION SECTION
IN TECHNICAL MANUAL

Magnetic Monitor (MM) Application

SEE ELECTRICAL APPLICATION SECTION
IN TECHNICAL MANUAL

Effective Date: November 2003

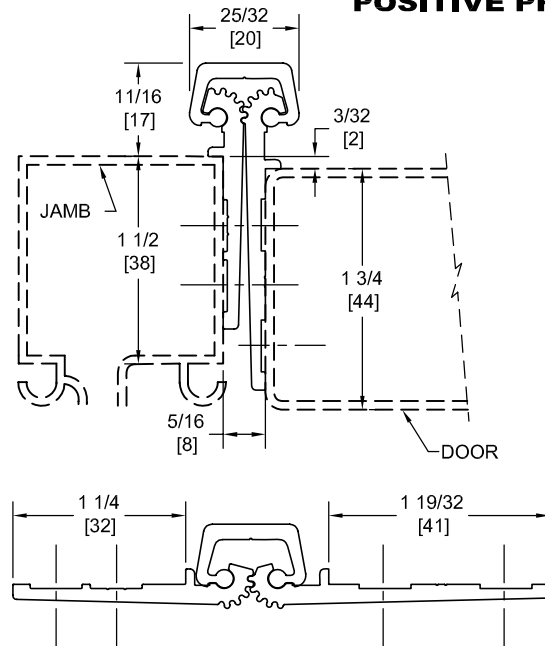
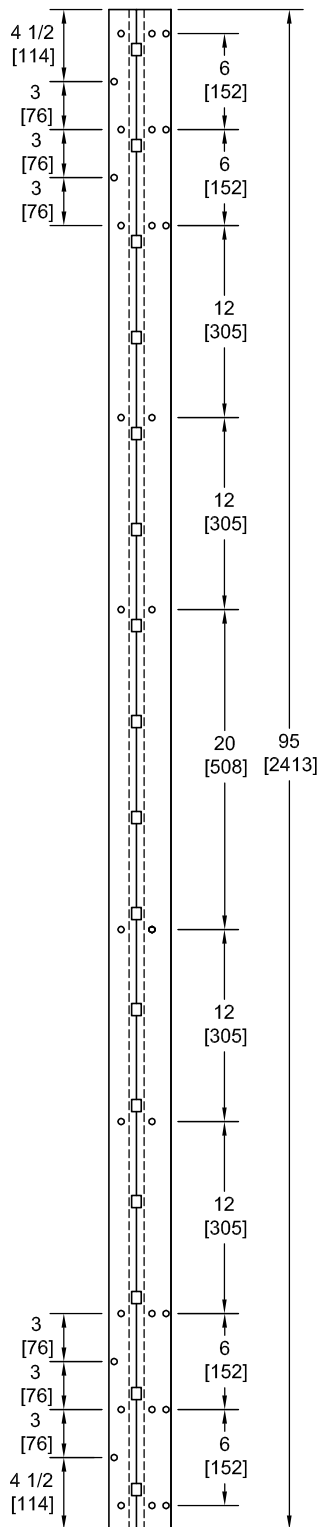
SPFM95SLI

TEMPLATE FULL MORTISE CONTINUOUS GEARED ALUMINUM HINGE

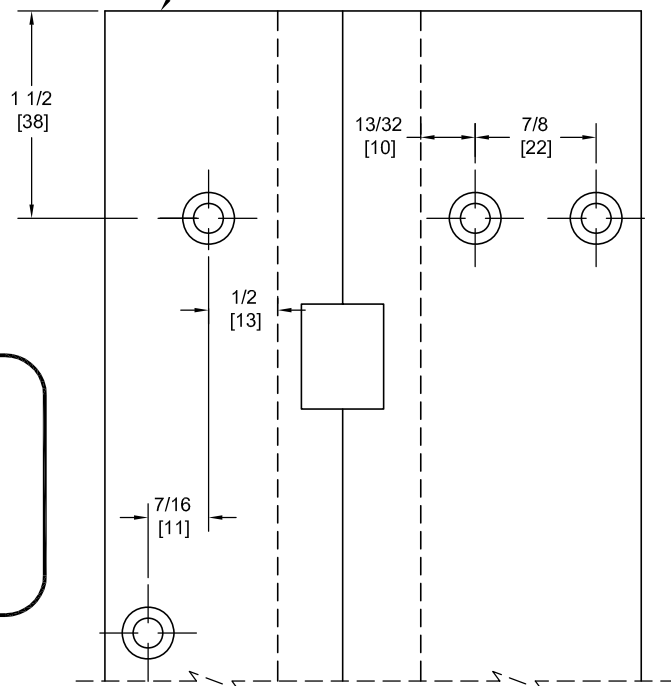


Fire Rated
Classified & Listed to
meet the requirements of
Standards UL10B, UL10C,
UBC7-2, Part I & BS476

POSITIVE PRESSURE



DO NOT SCALE



**** CAUTION ****
Due To Frame
Installation
Variations,
Pre-drilling
For Fasteners
Is Not
Recommended

PEMKO Template Full Mortise Continuous Geared Aluminum Hinges CSPFM95SLI/DSPFM95SLI are made to conform to this drawing.
PEMKO CSPFM95SLI/DSPFM95SLI hinges can be supplied with Electric Functions - See Electrical Application Section.
Machine Screw Size - No. 12-24 x 7/16 FHUC Thread-forming.
PEMKO Continuous Geared Aluminum Hinges are Listed for fire applications up to 90 minutes without special preparation.

Manufacturer reserves the right to make changes without formal notice.

Continued on Back...

Concealed Circuit (CC) Application

SEE ELECTRICAL APPLICATION SECTION
IN TECHNICAL MANUAL

Magnetic Monitor (MM) Application

SEE ELECTRICAL APPLICATION SECTION
IN TECHNICAL MANUAL

Effective Date: November 2003

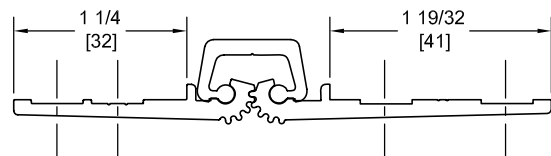
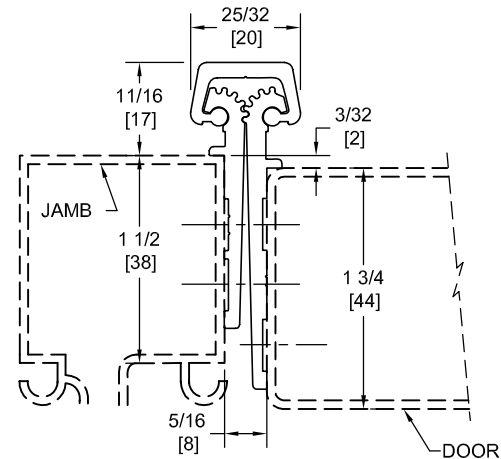
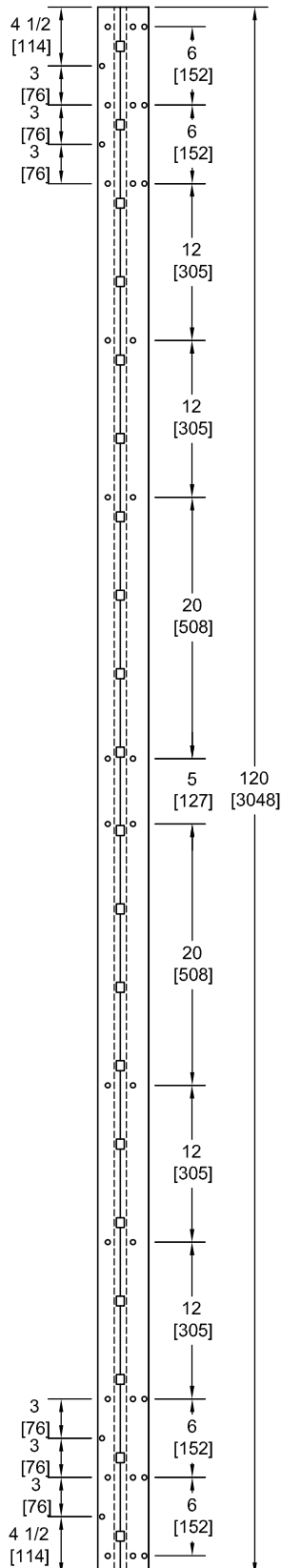
SPFM120SLI

TEMPLATE FULL MORTISE CONTINUOUS GEARED ALUMINUM HINGE

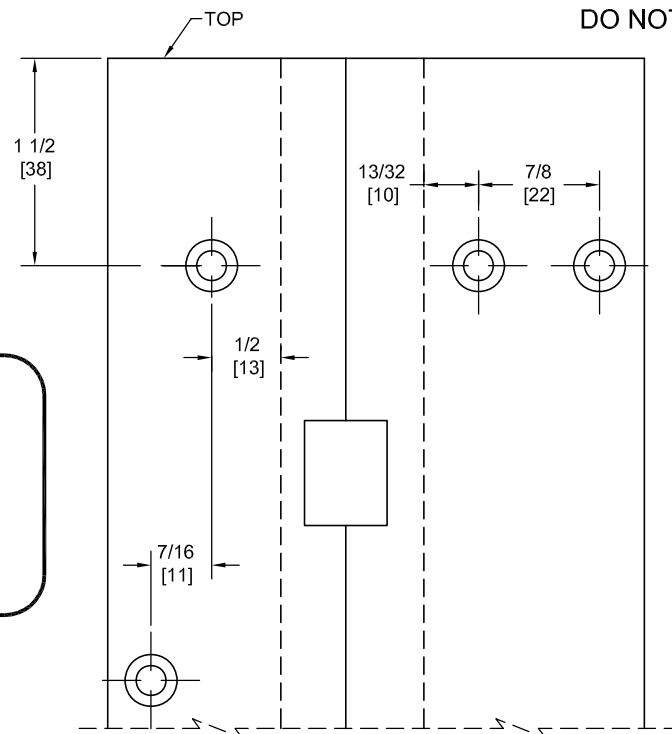


Fire Rated
Classified & Listed to
meet the requirements of
Standards UL10B, UL10C,
UBC7-2, Part I & BS476

POSITIVE PRESSURE



DO NOT SCALE



**** CAUTION ****
Due To Frame
Installation
Variations,
Pre-drilling
For Fasteners
Is Not
Recommended

PEMKO Template Full Mortise Continuous Geared Aluminum Hinges CSPFM120SLI/DSPFM120SLI are made to conform to this drawing.

PEMKO CSPFM120SLI/DSPFM120SLI hinges can be supplied with Electric Functions - See Electrical Application Section.

Machine Screw Size - No. 12-24 x 7/16 FHUC Thread-forming.

PEMKO Continuous Geared Aluminum Hinges are Listed for fire applications up to 90 minutes without special preparation.

Manufacturer reserves the right to make changes without formal notice.

Continued on Back...

Concealed Circuit (CC) Application

SEE ELECTRICAL APPLICATION SECTION
IN TECHNICAL MANUAL

Magnetic Monitor (MM) Application

SEE ELECTRICAL APPLICATION SECTION
IN TECHNICAL MANUAL