

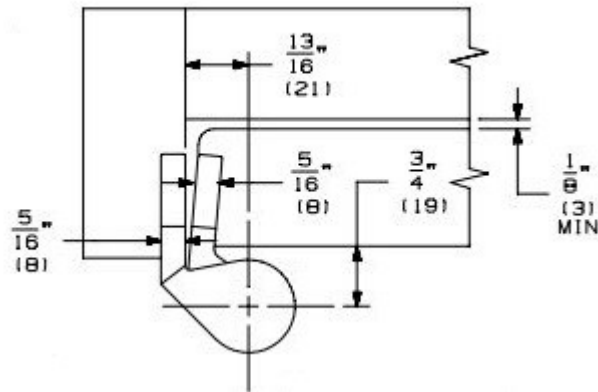


**TRADEMARK
HARDWARE**

WORLD OF QUALITY HARDWARE

Template – V7230F- 7237F

Note:
Dimensions in ()
are in millimeters.

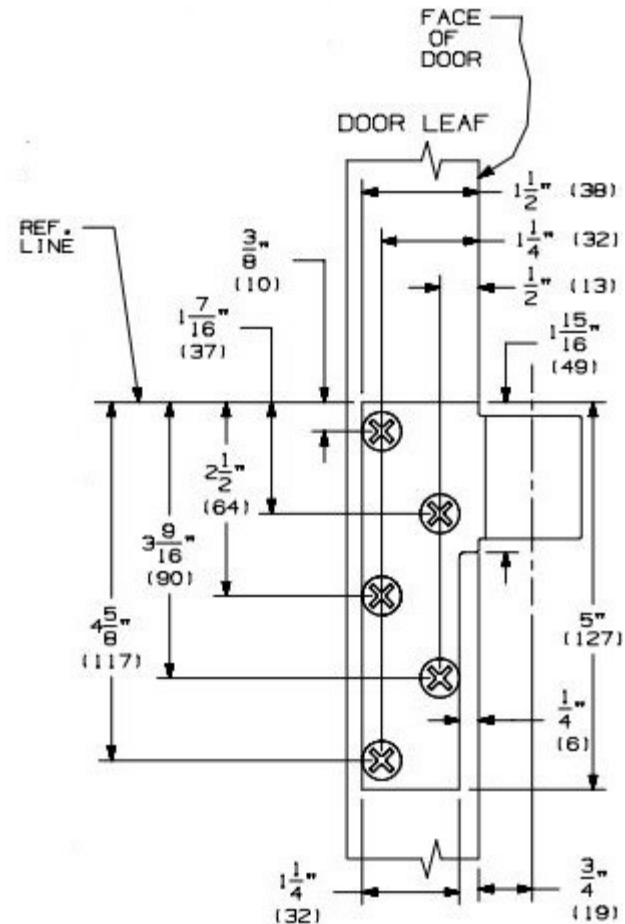


NOTES:

1. INSTALLER MUST VERIFY THAT CENTERLINE OF INTERMEDIATE PIVOT IS IN LINE WITH TOP AND BOTTOM PIVOTS.
2. PIVOT SET IS HANDED, RIGHT HAND TEMPLATING SHOWN, LEFT HAND OPPOSITE.
3. HEEL EDGE OF DOOR MUST BE BEVELED 1/8" IN 2".
4. PIVOTS MANUFACTURER TO ACCEPT 1/4-20 X 3/4 FPHMS OR #14 X 1 1/2" FPHWS.
5. VERTICAL LOCATION OF INTERMEDIATE PIVOT SHOULD BE EQUALLY SPACED BETWEEN TOP & BOTTOM PIVOT SETS.
6. REINFORCING PER ANSI/SOI-100 RECOMMENDED FOR HOLLOW METAL DOORS & FRAMES.

5

RIGHT HAND DOOR & PIVOT
SHOWN. LEFT HAND OPPOSITE.



www.tmhardware.com



845-388-1300



845-388-1388



sales@tmhardware.com



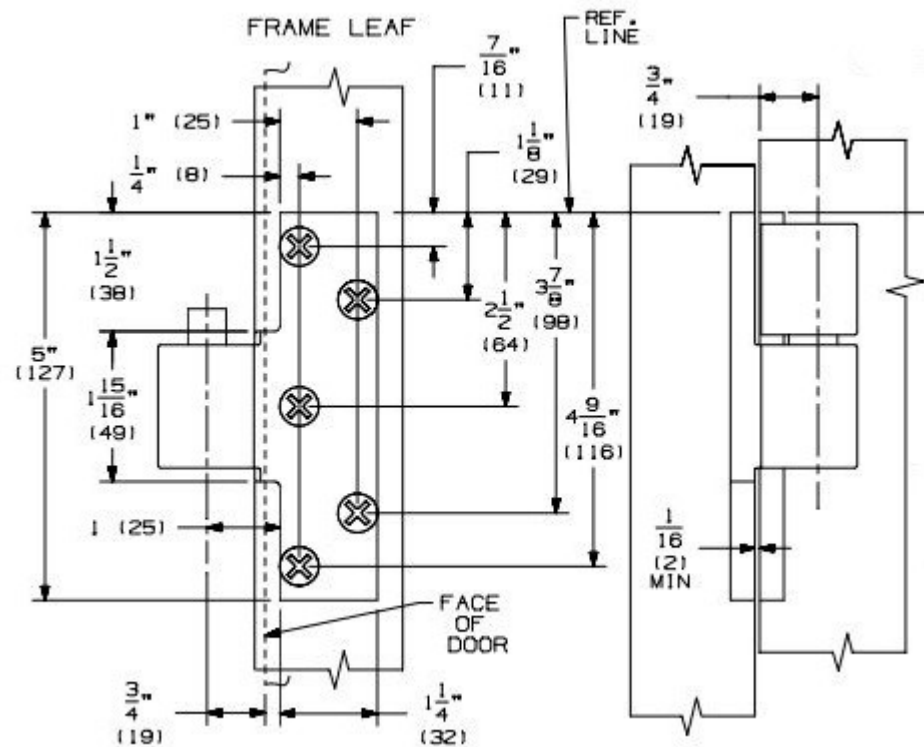
**TRADEMARK
HARDWARE**

WORLD OF QUALITY HARDWARE

Template – V7230F- 7237F

Note:

Dimensions in ()
are in millimeters.



www.tmhardware.com



845-388-1300



845-388-1388



sales@tmhardware.com