



**Trademark
HARDWARE**

INSTALLATION GUIDE

Installation Information



**SUPERGRIT®
Safety Treads**

Specify Supergrit® For:

- Heavy Pedestrian Traffic Use
- Indoor, Outdoor Installation
- Excellent Safety Protection at Low Cost

- New Construction or Existing Buildings
- Non-combustible

Installation Information for Wet Concrete and Existing Construction

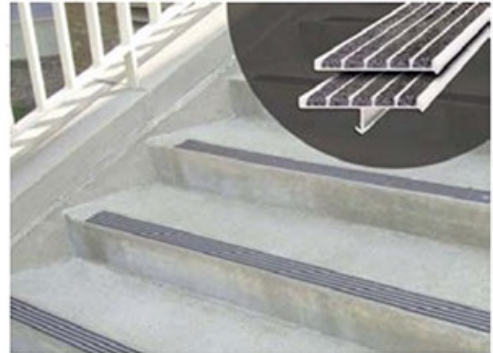
I. How to Install into Wet Concrete:

Order nosings or treads well in advance of the pour or installation date. Keeps treads free of dirt during construction (See protective tape option below).

1. Place the concrete into the stair forms or steel pans as quickly as possible; schedule pours so as to install the metal safety nosings quickly, before the "initial set" of the concrete occurs.
2. Puddle the concrete, tamp the safety nosings to insure proper concrete formation around the anchors.
3. Remove the protective tape as soon as practical.
4. Close stairway after pour; permit no use for 24 hours.

Note:

- * *The use of very large aggregate in the concrete mix may make placement of the safety nosing difficult.*
- * *Safety nosing placement may be difficult in concrete with very low slump.*
- * *Nosings should terminate not more than 4" from ends of steps for poured concrete stairs.*
- * *For concrete filled steel pan stairs, nosings should be full length of steps less 1/8 inch clearance.*



Protective Tape: Nosings for NEW construction can be furnished with a protective tape cover. This tape should be removed after the stairs are installed. Tape coverings entail a small additional charge per lineal foot. Tape should not be left on treads longer than 45 days.

**Trademark
HARDWARE**

148 Horton Drive, Suite B
Monsey, NY 10952

Phone: 845-388-1300
Fax: 845-388-1388

www.TMHardware.com
sales@tmhardware.com