

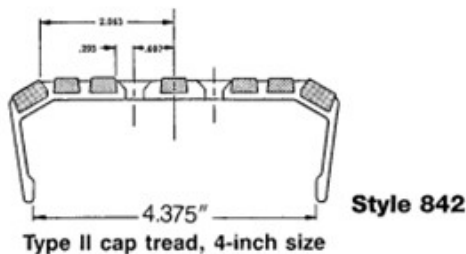
## PRODUCT SPECS

## U.S. Navy Design for Ships Inclined Ladders

**Complies with Specification MIL-T-24634 (SH) Treads, Compound Filled, for Inclined Ladders**  
**NAVSEA approved for installation on all Navy ships!**

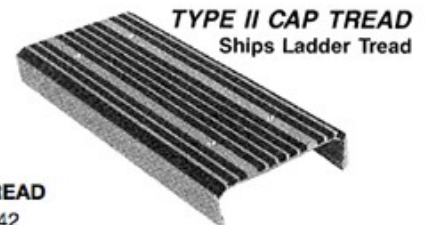
Design features include: Lower life cycle cost, improved wear resistance, slip resistance, damage resistance and weather resistance. Also improved appearance. Available in 4-inch, 6-inch and 9-inch widths.

Wooster Products Inc. also manufactures the complete line of Anti-Slip Safety Products for ships ladders, decks, ramps, showers, galleys, gangways, and passageways.



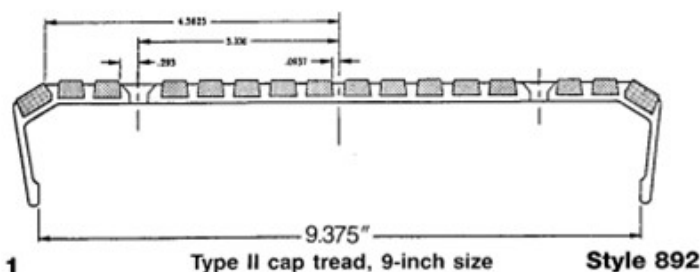
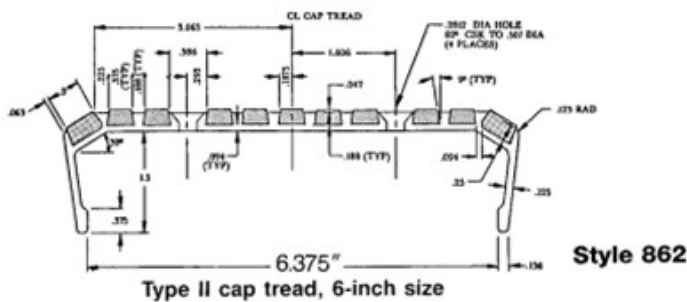
## NAVSEA LADDER TREADS

Sizes 4" - 6" - 9" • MiL-T-24634 (SH)  
Custom Lengths • Full Treads • Cap Treads



### TYPE II CAP TREAD

4" - Model 842  
6" - Model 862  
9" - Model 892



SKU:W842  
W862  
W892