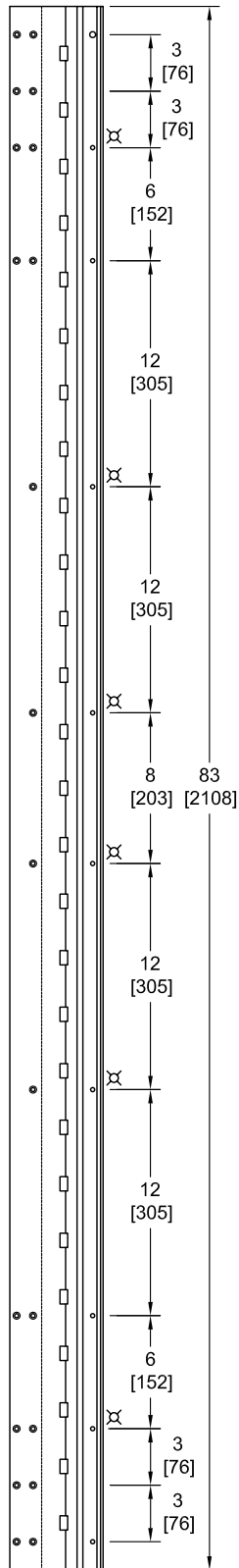
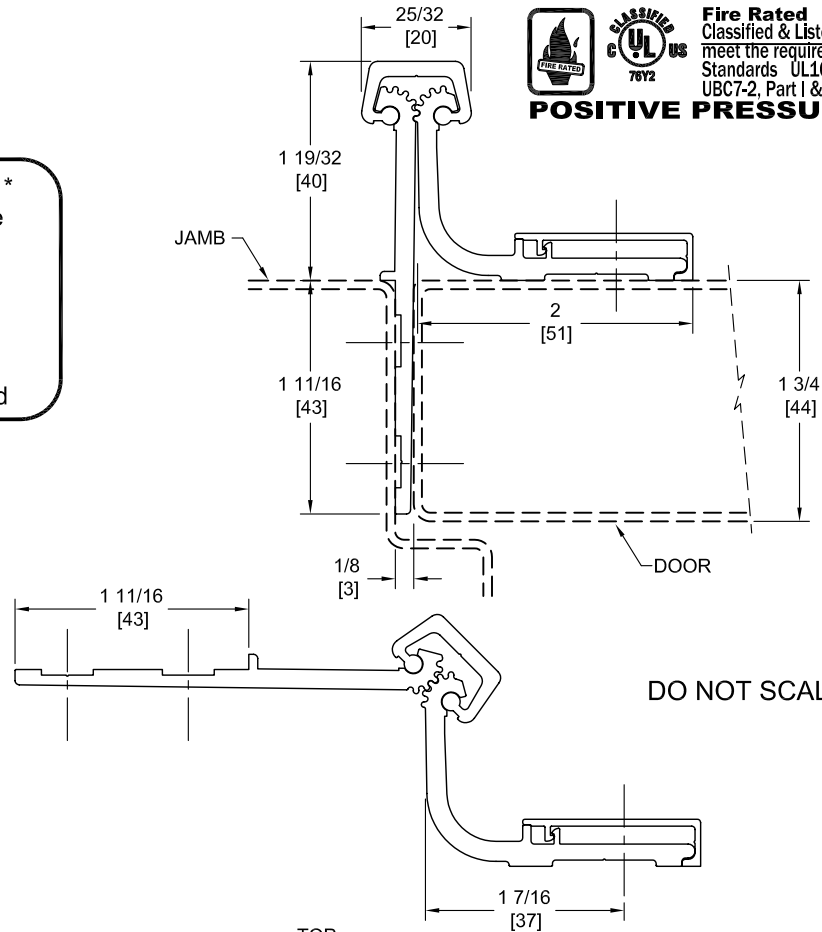


WTHS83HD

TEMPLATE HALF SURFACE CONTINUOUS GEARED ALUMINUM HINGE



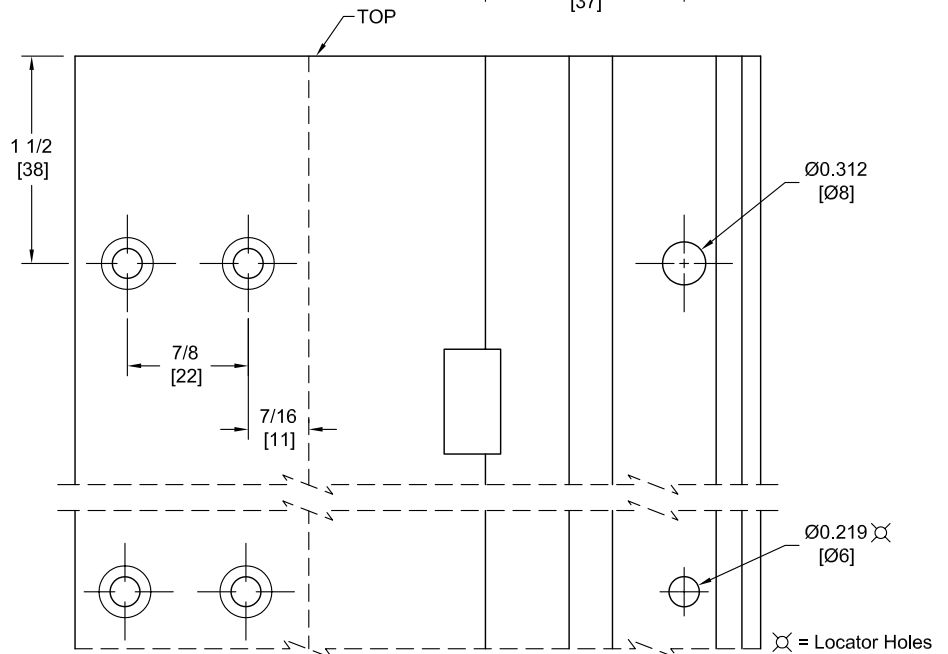
**** CAUTION ****
Due To Frame
Installation
Variations,
Pre-drilling
For Fasteners
Is Not
Recommended



Fire Rated
Classified & Listed to
meet the requirements of
Standards UL10B, UL10C,
UBC7-2, Part I & BS476

POSITIVE PRESSURE

DO NOT SCALE



PEMKO Template Full Surface Continuous Geared Aluminum Hinges CWTHS83HD/DWTHS83HD are made to conform to this drawing.
Machine Screw Size - Jamb Leaf - No. 12-24 x 7/16 FHUC Thread-forming.

- Door Leaf - No. 12-24 x 3/4 Pan Head Self-drilling.

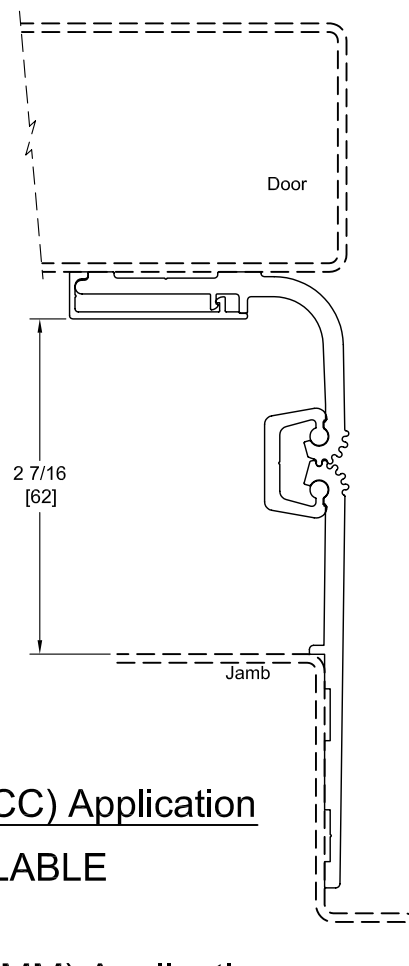
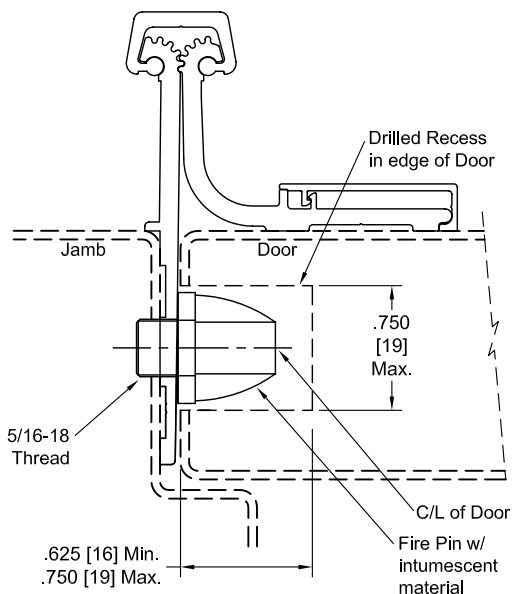
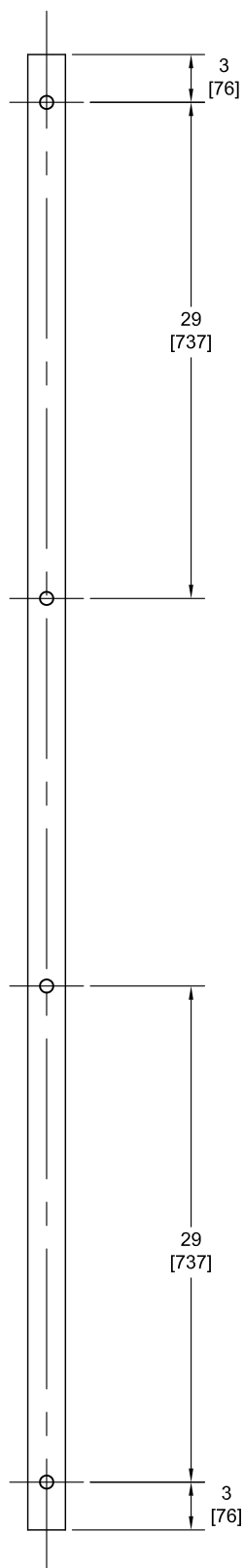
- No. 10 x 1-1/2 Truss Head SMS.

- No. 1/4-20 x 1 PCH Shoulder Screws w/ No. 1/4-20 x 1 5/8 Thru Bolts.

PEMKO Continuous Geared Aluminum Hinges are Listed for fire applications up to 90 minutes without special preparation; for 3 hour openings using hollow metal doors and hollow metal frames on Masonry/Drywall, Fire Pins (supplied separately) must be used. See back for locations.

Manufacturer reserves the right to make changes without formal notice.

Fire Pin Application



Concealed Circuit (CC) Application

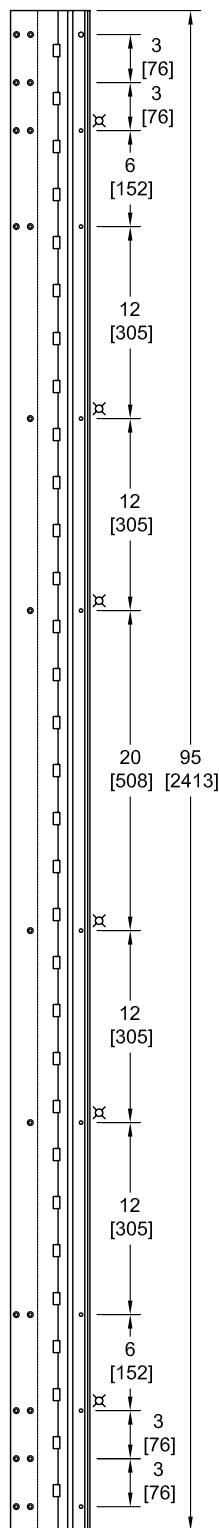
NOT AVAILABLE

Magnetic Monitor (MM) Application

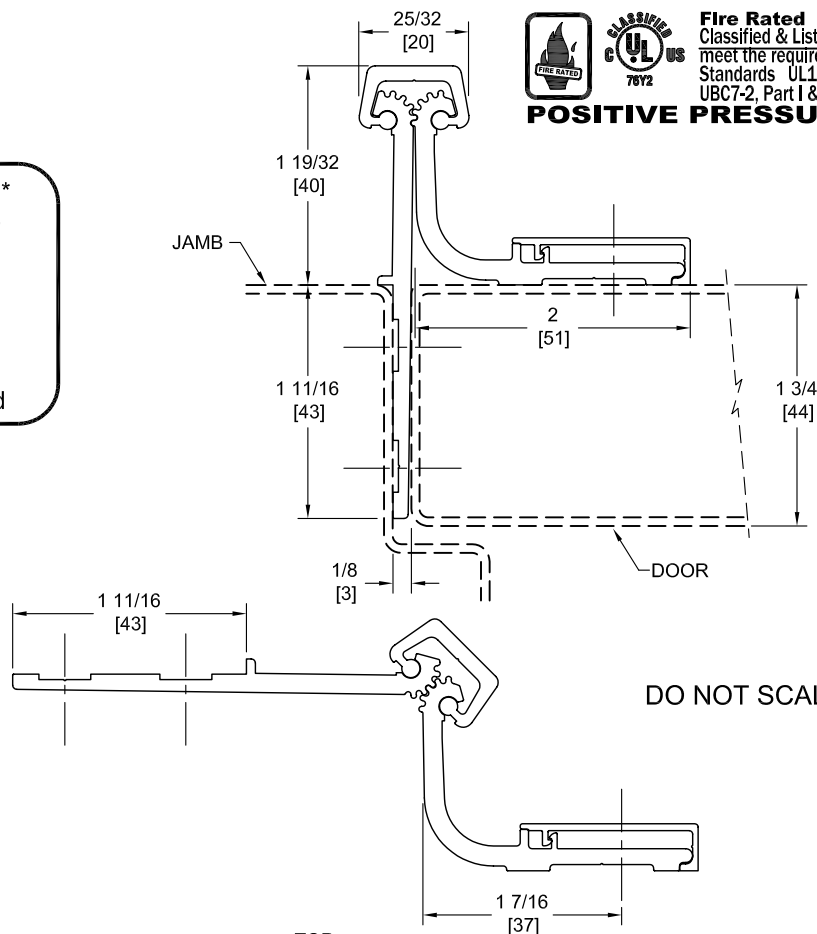
SEE ELECTRICAL APPLICATION SECTION
IN TECHNICAL MANUAL

WTHS95HD

TEMPLATE HALF SURFACE CONTINUOUS GEARED ALUMINUM HINGE



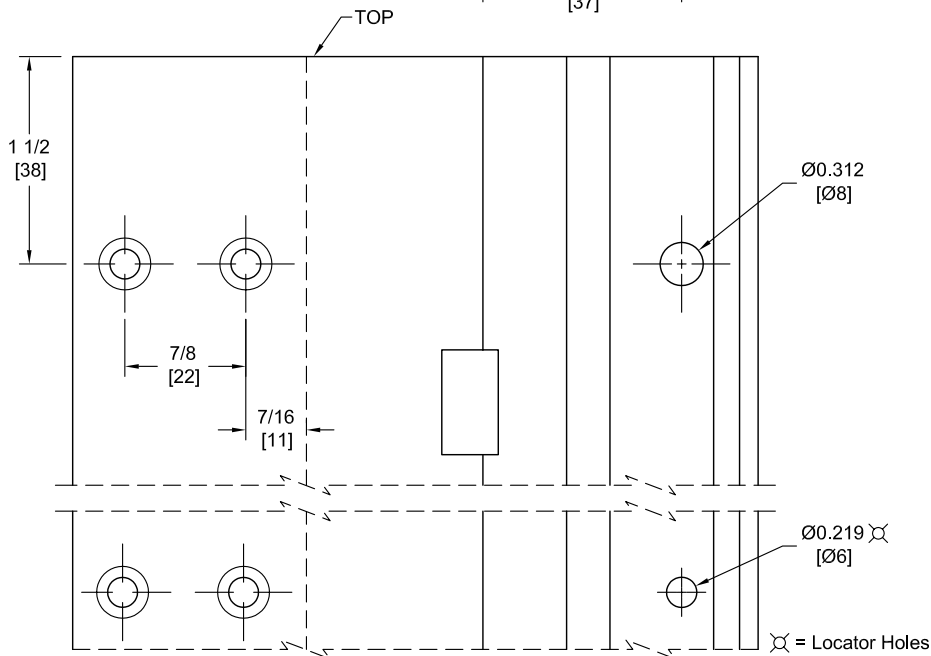
**** CAUTION ****
Due To Frame
Installation
Variations,
Pre-drilling
For Fasteners
Is Not
Recommended



Fire Rated
Classified & Listed to
meet the requirements of
Standards UL10B, UL10C,
UBC7-2, Part I & BS476

POSITIVE PRESSURE

DO NOT SCALE



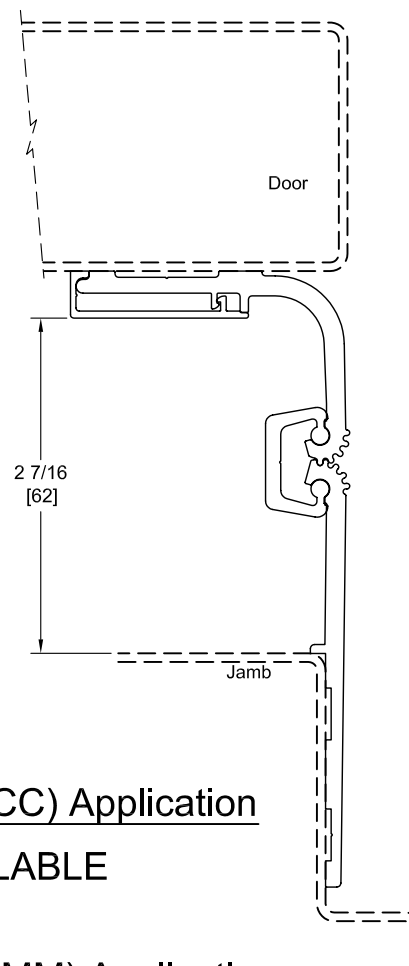
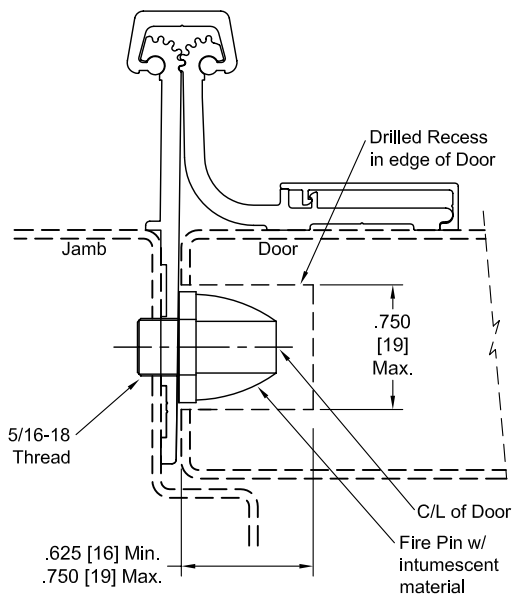
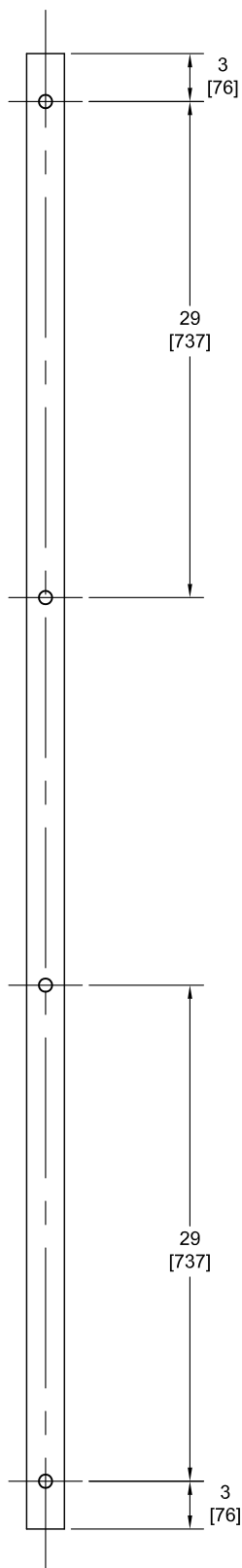
PEMKO Template Full Surface Continuous Geared Aluminum Hinges CWTHS95HD/DWTHS95HD are made to conform to this drawing.
Machine Screw Size - Jamb Leaf - No. 12-24 x 7/16 FHUC Thread-forming.

- Door Leaf - No. 12-24 x 3/4 Pan Head Self-drilling.
- No. 10 x 1-1/2 Truss Head SMS.
- No. 1/4-20 x 1 PCH Shoulder Screws w/ No. 1/4-20 x 1 5/8 Thru Bolts.

PEMKO Continuous Geared Aluminum Hinges are Listed for fire applications up to 90 minutes without special preparation; for 3 hour openings using hollow metal doors and hollow metal frames on Masonry/Drywall, Fire Pins (supplied separately) must be used. See back for locations.

Manufacturer reserves the right to make changes without formal notice.

Fire Pin Application



Concealed Circuit (CC) Application

NOT AVAILABLE

Magnetic Monitor (MM) Application

SEE ELECTRICAL APPLICATION SECTION
IN TECHNICAL MANUAL