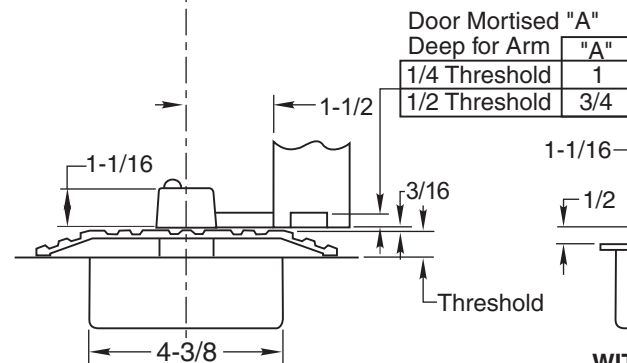
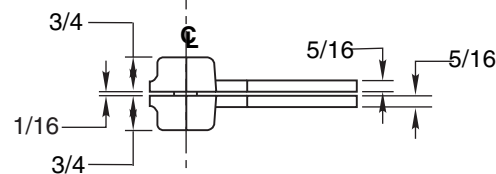
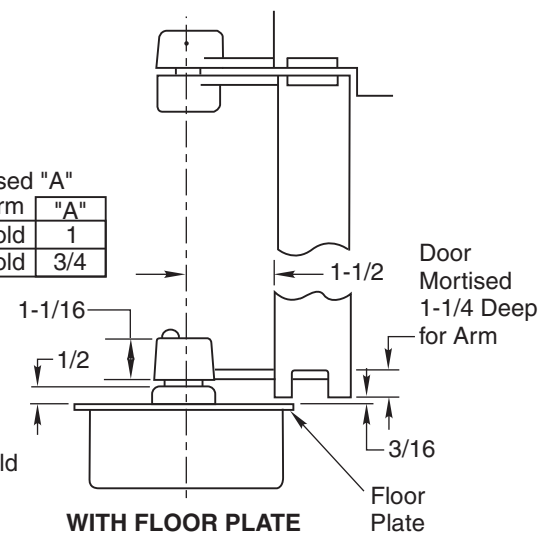


Notes:

1. Do not scale drawing.
2. Right Hand Shown.
3. All dimensions given in inches.
Conversion from inches to metric:
inch x 25.4
4. Rixson design thresholds available on request.
5. Do not remove grind plate until closer is installed.
6. No built-in dead stop. External stop required, by others.



WITH THRESHOLD
Set Cement Case Flush
with Finished Floor



WITH FLOOR PLATE
Set Cement Case Flush
With Finished Floor

51 Floor Closer 1-1/2" Offset

RIXSON®
ASSA ABLOY

www.rixson.com

TEMPLATE NUMBER

OS10205

DATE

12-08