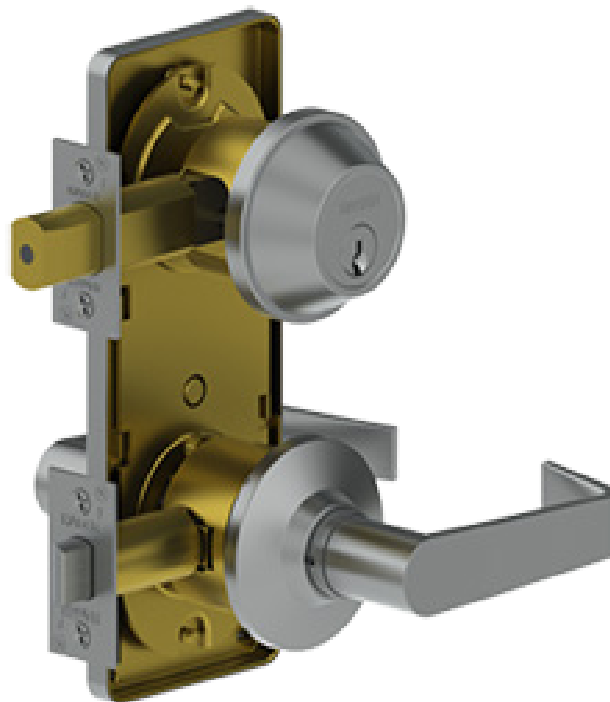


3700 Series



Hager 3700 Series Grade 2 interconnected lock is a perfect match for residential or commercial applications such as apartment buildings and assisted living facilities. These versatile locks provide a single action for retracting the latchbolt and deadbolt simultaneously for panic-free egress. They are supplied with an optional exterior escutcheon plate standard and are backed by a lifetime warranty.





3700 SERIES - HOW TO ORDER

3710 2-³/₄" US3 US26 ARC SCC KD TEE TW

Function
10 - Entry/Single Locking
53 - Entry/Double Locking

Product Group
37 - Interconnected, Grade 2

Finish
US3
US4
US10
US10B
US26
US26D

Interior Finish
(If Different)

Lever Style
ARC - Archer Lever
AUG - August Lever
WTN - Withnell Lever

Conventional Keyway
SCC - Schlage C
AR1 - Arrow
C60 - Corbin 60
C67 - Corbin 67
C77 - Corbin 77
CL4 - Corbin L4
SCE - Schlage E
SCF - Schlage F
H1 - Hager 1
H2 - Hager 2
H3 - Hager 3
KW1 - Kwikset
RD1 - Russwin D1
SGT - Sargent LA
YAP - Yale E1R (Para)
YGA - Yale GA
WE - Weiser E
NC - No Cylinder (SFIC Housing Only)

Strike
T-Strike (Standard)
No Lip, DB Strike (Standard)
Full Lip
RC Full Lip

Options
LL - Leadlined
6PKEY - 6-pin Keyed
7PKEY - 7-pin Keyed (Hager)
SFIC* - Small Format Interchangeable Core Prep

Backset/Faceplate
2-3/4" (70 mm), SC (Standard)
2-3/4" (70 mm), RC
2-3/8" (60 mm), SC
2-3/8" (60 mm), RC

Keying
KA - Keyed Alike
KD - Keyed Different
MK - Master Key
CMK - Construction Master Key
SK - Customer Specified Keying
0BC - "0" Bitted Cylinder (Conventional Only)
1BC - "1" Bitted Cylinder (Conventional Only)



Notes:

1. If masterkeyed, include completed master key form with order (available on page 88 or www.hagerco.com).
2. For additional keying information, please refer to Cylinder, Core & Keying section of catalog (page 73).

* Small format interchangeable core sold separately. Available in Best Keyways (A Standard) or Hager Keyways (optional).

Ordering example: 3753 2-3/4" US26D WTN NC TEE SFIC

3700 SERIES FUNCTION CHART

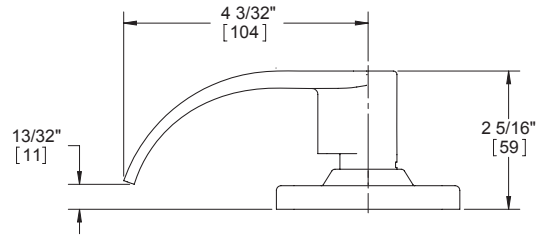
Function	Function No.	Function Description	ANSI No.	
Interconnected				
	Interconnected Single Locking Entry	10	Deadbolt thrown or retracted by key outside or by inside thumbturn. Bolt automatically deadlocks when fully thrown. Latchbolt retracted by lever from either side. Inside lever retracts deadbolt and latchbolt simultaneously for immediate exit.	F95
	Interconnected Double Locking Entry	53	Deadbolt thrown or retracted by key outside or by inside thumbturn. Bolt automatically deadlocks when fully thrown. Deadlatch retracted by key outside when locked by pushing turnbutton on inside lever. Outside lever may be fixed in locked position by rotating turnbutton. Inside lever retracts deadbolt and deadlatch simultaneously for immediate exit.	F97



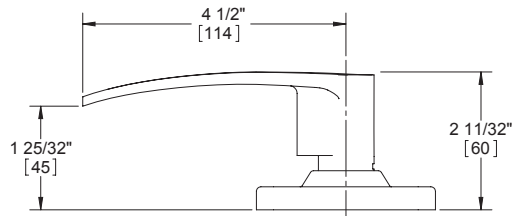


3700 SERIES - LEVER OPTIONS

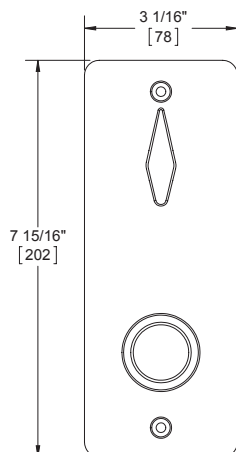
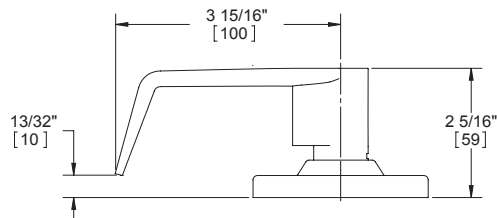
ARCHER LEVER



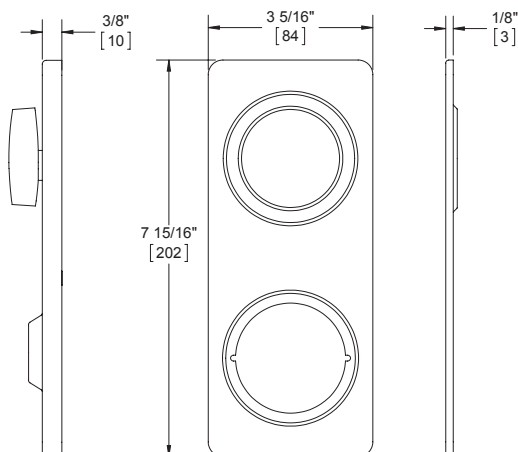
AUGUST LEVER



WITHNELL LEVER



INSIDE ESCUTCHEON



OPTIONAL OUTSIDE ESCUTCHEON



**3700 SERIES - GRADE 2 INTERCONNECTED - MEDIUM DUTY COMMERCIAL****WARRANTY**

Lifetime warranty

FEATURES

- Cylindrical chassis
- Non-handed
- Conventional cylinder or Small Format Interchangeable Core option available

Certifications:

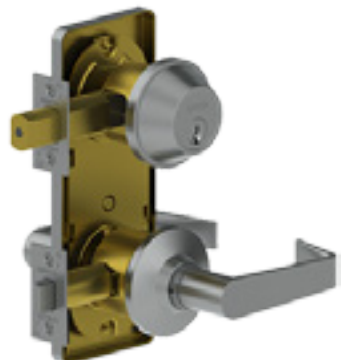
- BHMA Certified ANSI A156.12 Grade 2
- ADA Compliant ANSI A117.1 Accessibility Code
- UL/cUL Listed for all functions up to 3 hours for "A" label single doors
- UL10C Positive Pressure Rated
- UL10B Neutral Pressure Rated

Lever Options:

Archer, August, Withnell levers

Options:

- Split finish
- Split lever design

**SPECIFICATIONS**

Standard Door

- 4" (102 mm) center of deadbolt to center of lock chassis
- 2-1/8" (54 mm) diameter (bore)
- Latch hole: 1" (25 mm) diameter (cross bore)

Prep:

Exposed Trim:

Wrought brass or bronze, cast zinc lever

Rose Diameter:

2-1/2" (63 mm)

Lock Chassis:

- Heavy gauge steel, zinc dichromated
- Thru-bolt mounting
- "Non-clutching" exterior lever

Outside

Escutcheon:

3-5/16" x 7-15/16" x 3/8" (84 mm x 202 mm x 10 mm)

Inside

Escutcheon:

3-1/16" x 7-15/16" x 1/8" (78 mm x 202 mm x 3 mm)

Keys:

Two operating keys supplied per lock

Cylinders/Cores:

- Brass - keyed different - Schlage C Keyway - Standard
- Cylinder drilled 6-pin, keyed 5-pin - Standard
- Other keying options, including keyed 6-pin, available from the factory (see cylinder, cores and keying section)
- Small Format Interchangeable Core option available
- SFIC uncombined or combined, brass 6- or 7-pin cores sold separately

Door Thickness:

- 1-3/8" - 1-3/4" (35 mm - 45 mm) - Standard
- 2" (52 mm) doors - Optional

Backsets:

- 2-3/4" (70 mm) - Standard
- 2-3/8" (60 mm) - Optional

Latchbolt:

- 1/2" (13 mm) Throw - stainless steel
- 1-1/8" x 2-1/4" (29 mm x 57 mm) faceplate for 2-3/4" (70 mm) backset
- 1" x 2-1/4" (25 mm x 57 mm) faceplate for 2-3/8" (60 mm) backset
- Deadlocking latchbolt prevents manipulation when door is closed; keyed functions only
- Square corner faceplate standard, round corner available

Deadbolt:

- 1" (25 mm) Throw - brass with concealed steel roller to prevent sawing or cutting
- 1-1/8" x 2-1/4" (29 mm x 57 mm) faceplate for 2-3/4" (70 mm) bracket
- 1" x 2-1/4" (25 mm x 57 mm) faceplate for 2-3/8" (60 mm) faceplate

Strikes:

- 3933 square corner t-strike with plastic dust box, 1-1/8" x 2-3/4" (29 mm x 70 mm) - Standard
- 3930 square corner strike plate with dust box, 1-1/8" x 2-3/4" (29 mm x 70 mm) - Standard

Functions:

- 10 Single Locking Entry
- 53 Double Locking Entry

FINISHES

US3, US4, US10, US10B, US26, US26D





3700 SERIES - LATCHBOLTS

Spring Latches



- 3947**
2-3/4" (70 mm) Backset
Passage Spring Latch
- Square and round corner available
 - 1-1/8" x 2-1/4" (29 mm x 57 mm) faceplate



- 3949**
2-3/8" (60 mm) Backset
Passage Spring Latch
- Square and round corner available
 - 1" x 2-1/4" (25 mm x 57 mm) faceplate

Dead Latches



- 3948**
2-3/4" (70 mm) Backset
Dead Latch - Standard
- Square and round corner available
 - 1-1/8" x 2-1/4" (29 mm x 57 mm) faceplate



- 3950**
2-3/8" (60 mm) Backset
Dead Latch
- Square and round corner available
 - 1" x 2-1/4" (25 mm x 57 mm) faceplate

3700 SERIES DEADBOLTS



- 3920**
2-3/4" (70 mm) Backset
Tapered Deadbolt - Standard
- Square and round corner available
 - 1-1/8" x 2-1/4" (29 mm x 57 mm) faceplate



- 3921**
2-3/8" (60 mm) Backset
Tapered Deadbolt
- Square and round corner available
 - 1" x 2-1/4" (25 mm x 57 mm) faceplate



- 3930**
Strike Plate
 1-1/8" x 2-3/4" (29 mm x 70 mm)



- 3933**
T-Strike with Plastic Dust Box
 1-1/8" x 2-3/4" (29 mm x 70 mm)



- 3934**
Full Lip Strike
 1-5/8" x 2-1/4" (41 mm x 57 mm)



- 3958**
Round Corner Full Lip Strike
- 1-5/8" x 2-1/4" (41 mm x 57 mm)
 - 1/4" (6 mm) radius



- 3959**
Faceplate Adapter
 Converts 1" (25 mm) to 1-1/8" (28 mm) width