

LOCINOX

Let's make it better together



GATE AND ACCESS CONTROL HARDWARE

for ornamental and chain link gates



**TRADEMARK
HARDWARE**

WWW.TMHARDWARE.COM

HELLO. WE ARE LOCINOX.



**TRADEMARK
HARDWARE**
WWW.TMHARDWARE.COM

We are pioneers of high quality outdoor gate hardware.

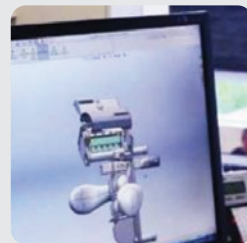
All products are developed based on these 4 criteria:



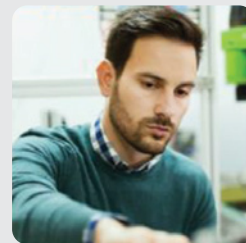
EASE OF USE



WEATHERPROOF



INDUSTRIAL QUALITY



INNOVATIVE DESIGN

WE SAVE YOU TIME & MONEY

Whether you are a fence contractor, distributor, manufacturer or locksmith - an easy and efficient installation is beneficial to everyone. Every Locinox solution meets the highest quality standards: our products withstand the test of time and are designed to cope with the most extreme weather circumstances.



**SPEED OF INSTALLATION
SAVE TIME & MONEY**



**PRODUCT QUALITY
ELIMINATE SERVICE CALLS**



**LEFT OR RIGHT HANDED
SAVE ON INVENTORY**



PATENTED QUICK-FIX MOUNTING BOLTS

The majority of Locinox products are installed using the patented Quick-Fix mounting bolts.

The Quick-Fix works just like an anchor bolt, expanding against the inside of your post or gate frame. Each Quick-Fix bolt has a 2,000 lbs holding force guaranteeing a safe and durable installation.

This unique anchor bolt is very easy to install - you just have to drill one hole per Quick-Fix.



A MULTITUDE OF APPLICATIONS

Locinox is used in various applications, both commercial and residential! Feel free to browse through nice installations by many of our happy customers at www.locinoxusa.com



INDUSTRIAL & COMMERCIAL



MULTI-FAMILY LIVING



TRANSPORTATION



BIKE PARKS



PRISONS



MILITARY INSTALLATIONS



FESTIVALS



AIRPORTS & PORTS



POWER PLANTS



CAR PARKS



AMUSEMENT PARKS



EDUCATION



PLAYGROUNDS



SPORTS STADIUMS

TABLE OF CONTENTS

GATE CLOSERS	9
LOCKS & KEEPS	23
AUTOMATION & ELECTRONICS	31
HINGES & DROP BOLTS	38
TURNSTILES	42

A COUPLE OF TIPS!



The chain link icon means the product can be fitted on round frames with optional brackets. If no icon is shown, the product can be fitted to square or rectangular frames only.



Most Locinox products are fitted with the patented Quick-Fix. This highly innovative and extremely strong anchor bolt resists a pulling force of 2,000 lbs per Quick-Fix.

ZILV 9005

Choose between silver and black, whichever matches your gate best.

**24h
SHIPPING**

All products in this brochure are in stock and can be shipped within 24h from our office in Chicago, IL.



Most of our products are developed for left and right hand gates.

LOC E SHOP
 order when it suits you

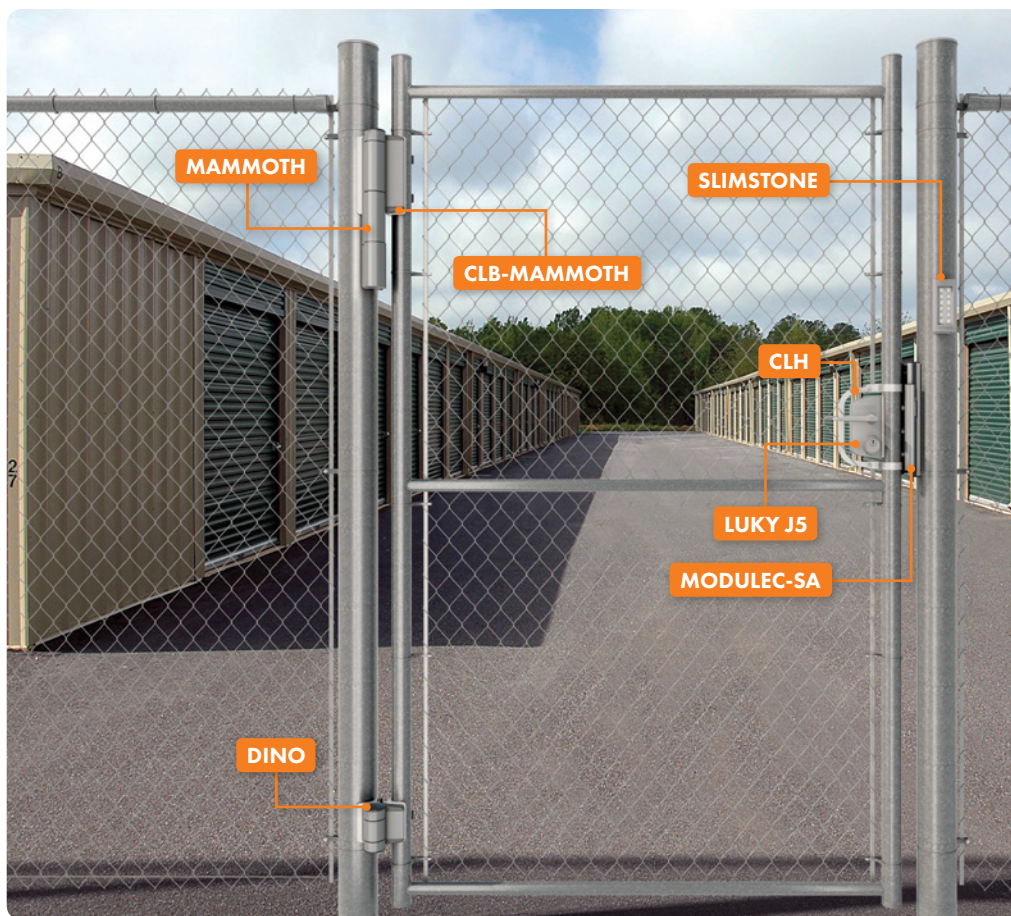
More details such as specs, pictures, (CAD) drawings, videos and prices are available at www.locinoxusa.com

ACCESS CONTROL SOLUTIONS FOR ANY GATE



A SAFE AND CHILDPROOF SWIMMING POOL AREA

- TIGER** (p.14)
Compact hinge and gate closer in one
- PUMA** (p.40)
Compact 2-way adjustment 180° surface mounted hinge
- FREE VINCI (LFKQ)** (p.26)
Mechanical code lock with free exit
- PUSHBAR** (p.27)
Aluminum panic bar
- SAKL QF** (p.28)
Industrial stainless steel keep
- SHIELD** (p.28)
Anti-theft protection plate for keeps



SAFE & QUALITY SOLUTIONS FOR INDUSTRIAL GRADE CHAIN LINK GATES

- MAMMOTH** (p.13) + **DINO** (p.40)
Stylish hydraulic gate closer for heavy gates
- CLB-MAMMOTH** (p.15)
Chain link bracket for Mammoth
- LUKY J5** (p.34)
Surface mounted US Mortise cylinder gate lock
- CLH** (p.28)
Chain link tension bar adapter
- 3019LA-S-C-V** (p.28)
Adaptor plate for LA and LS locks
- MODULEC-SA** (p.33)
Surface mounted electric strike
- 3018-MOD** (p.28)
Adaptor plate for Modulec strike
- SLIMSTONE** (p.32)
Robust, weatherproof and frost-free keypad (IP68)



**TRADEMARK
HARDWARE**
WWW.TMHARDWARE.COM



RELIABLE AND DURABLE SOLUTIONS FOR DOG PARK GATES

TIGER (p.14) + **PUMA** (p.40)

Compact hinge and gate closer in one

CLB-TIGER (p.15)

High quality aluminum bracket for installation of Tiger gate closer on round chain link fences

LUKY J5 (p.25)

Surface mounted US mortise cylinder gate lock (USA)

KEYDROP (p.41)

High quality key lockable drop bolt

CLH (p.28)

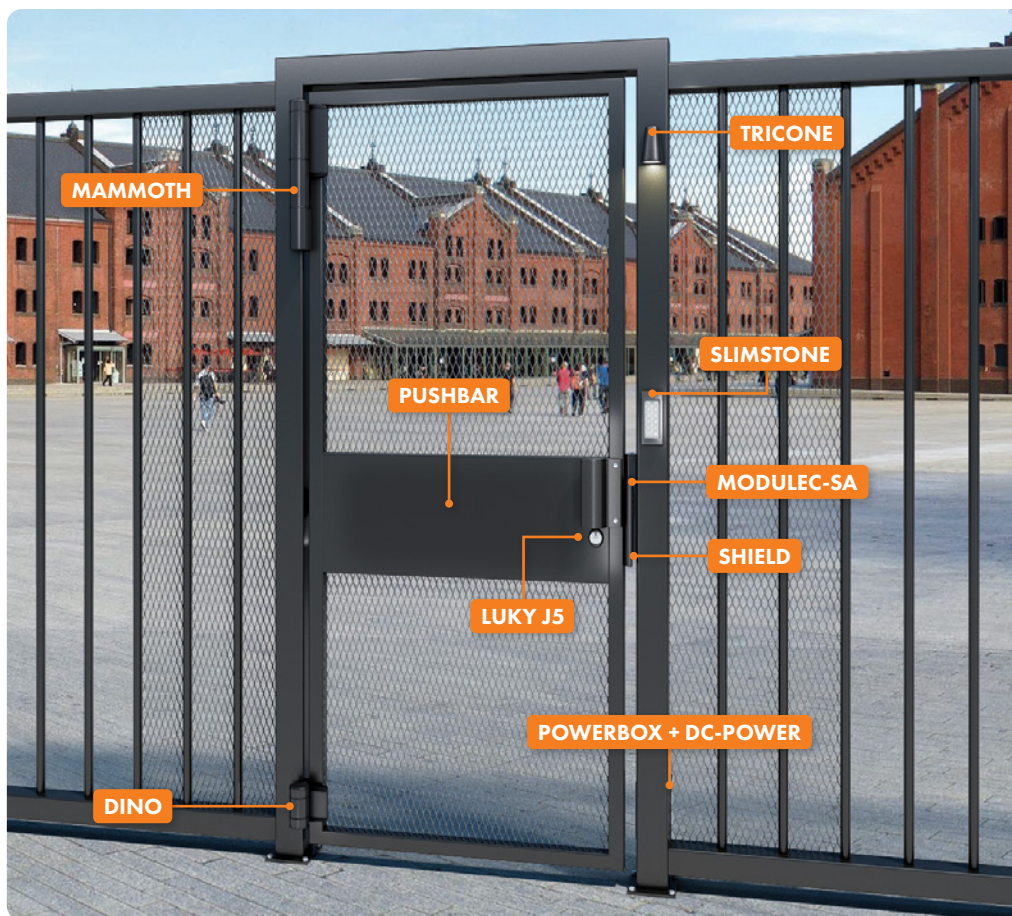
Chain link tension bar adapter

3019LA-S-C-V (p.28)

Adapter plate for LA and LS locks

SAKL QF (p.28)

Adjustable keep out of stainless steel



SAFE & CONVENIENT SOLUTIONS FOR ADA AND FREE EGRESS GATES

MAMMOTH (p.13) + **DINO** (p.42)

Powerful 180° hydraulic gate closer and hinge in one, for gates up to 330 lbs

LUKY J5 (p.25)

Gate lock with handles – includes 2 US Mortise cylinders

PUSHBAR (p.27)

Easy-to-open panic release bar

SLIMSTONE (p.32)

Robust, weatherproof and frost-free keypad (IP68)

MODULEC-SA (p.33)

Premium surface mounted electric strike

SHIELD (p.28)

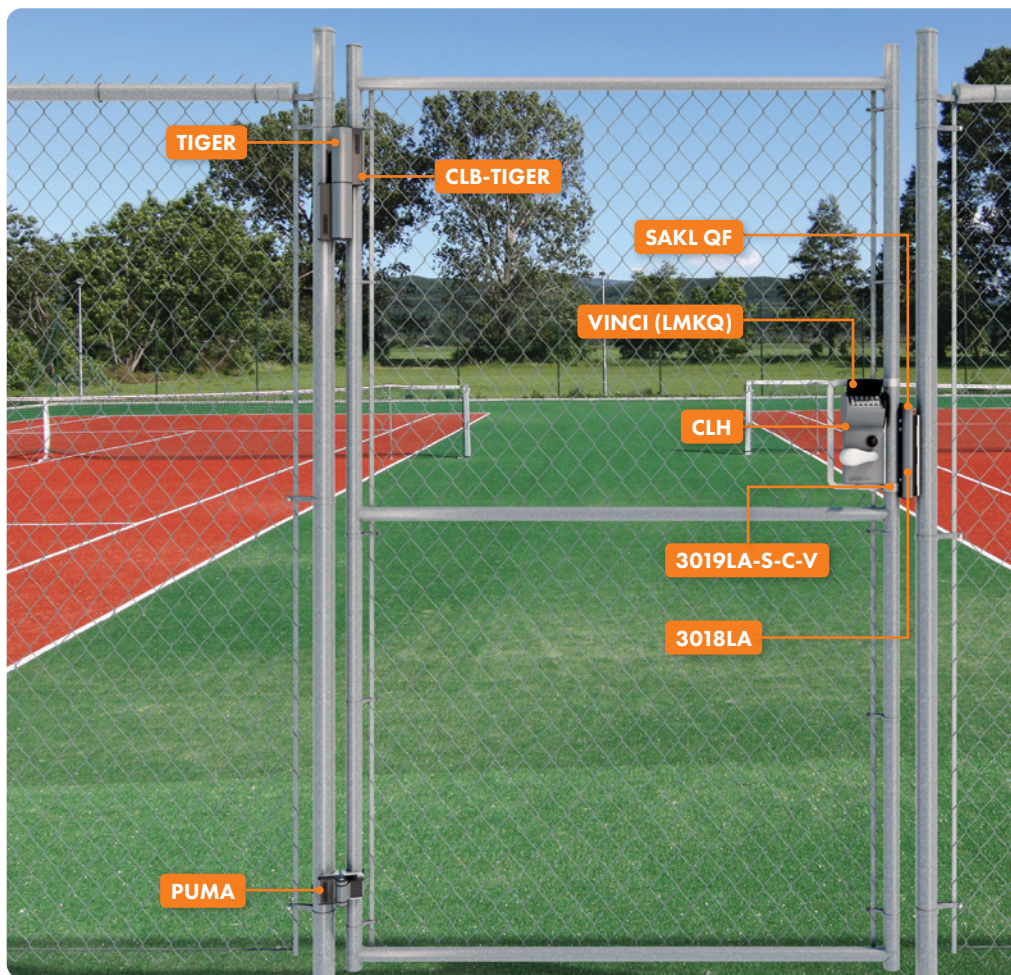
Anti-theft protection plate for keeps

TRICONE (p.36)

Elegant LED exterior light

POWERBOX + DC-POWER (p.37)

Transformer housing + Safety power supply



EASY & RELIABLE SOLUTIONS FOR CHAIN LINK ACCESS GATES

TIGER (p.14)

Compact hinge and gate closer in one

CLB-TIGER (p.15)

High quality aluminum bracket for installation of Tiger gate closer on round chain link fences

PUMA (p.40)

Compact 2-way adjustment 180° surface mounted hinge

VINCI (LMKQ) (p.26)

Surface mounted mechanical code lock

CLH (p.28)

Chain link tension bar adapter

3019LA-S-C-V (p.28)

Adapter plate for LA and LS locks

SAKL QF (p.28)

Industrial stainless steel keep

3018LA (p.28)

Round adaptor plate for locks



THE COMPLETE CHAIN LINK CONCEPT GATE FOR ALL USES

SAMSON-2 (p.15)

Hydraulic retrofit gate closer for wide gates up to 330 lbs

SB- (p.15)

Galvanized bracket to mount Samson-2 on chain link gates

LUKY J5 (p.25)

Surface mounted US mortise cylinder gate lock (USA)

3019LA-S-C-V (p.28)

Adapter plate for LA and LS locks

6403 (p.28)

Round adaptor plate for SH keeps

SHKL (p.28)

Industrial stainless steel security keep

SHIELD (p.28)

Anti-theft protection plate for keeps

CLH (p.28)

Chain link tension bar adapter



LUKY J5 p. 25



SLIMSTONE p. 32



BOLTON 4D p. 39



MAMMOTH p. 13

WE HAVE THE
SOLUTION
YOU NEED.



FREE VINCI p. 26



VERTICLOSE-2 p. 18



TIGER p. 14



MAGLOCK p. 35



TRADEMARK
HARDWARE
WWW.TMHARDWARE.COM



MAMMOTH HYDRAULIC
GATE CLOSER (p. 12)

Hydraulic gate closers will transform any gate into a self-closing solution. Comfort, safety and peace of mind are guaranteed thanks to pure hydraulic power. High quality components ensure Locinox gate closers to be 100% weatherproof, maintenance-free and extremely durable. A constant and consistent functioning is guaranteed during an ice cold winter or a sweltering summer. The unique concept ensures an easy and efficient fixation thanks to the patented Quick-Fix system. Moreover, closing speed and final snap can be adjusted very precisely and 100% to your customers' wishes.



12 Mammoth-HD

13 Mammoth



14 Tiger

16 Samson-2

17 Lion



18 Verticlose-2

19 Verticlose-2 Wall

20 Installation Tools

CUTTING EDGE SELF-CLOSING TECHNOLOGY



1 ALWAYS A CONSTANT CLOSING SPEED: FREEZING WINTER TO SIZZLING SUMMER

If your gate closes too slow, children or pets could sneak through. If your gate closes too fast, it might become a problem for wheelchair users. A loud slamming gate is not only annoying for you or your neighbours, it's also harmful for your gates.

3 FUNCTIONS COMFORTABLY

The in-house developed High-Helix screws guarantee a consistent functionality and ensure a comfortable opening speed for the elderly or disabled.

4 DUST- & WATERPROOF

Our gate closers are equipped with rotary seals. These seals protect the gate closers from dirt or dust particles intruding the mechanism, assuring your customers of worry-free functioning for many years to come.

2 ADJUST SPEED AND FINAL SNAP PRECISELY

Some customers prefer their gate to close slowly, while others want it to go a little faster. No problem! All of our hydraulic gate closers can easily be adjusted to the wishes of your customers in a matter of seconds.

5 CLOSES EVERY TIME

The powerful torsion spring guarantees the necessary closing force. Therefore, your gate will always close: unaffected by strong winds, the width of your gate wing or the outside temperature. You can rest assured.

6 100% PROTECTED

The anodized aluminum housing guarantees full protection against all weather conditions. This housing is frost-free and wind-, dust- and waterproof, allowing your gate closer to function perfectly.

A GATE CLOSER FOR EVERY GATE

GATE CLOSER & HINGE IN ONE

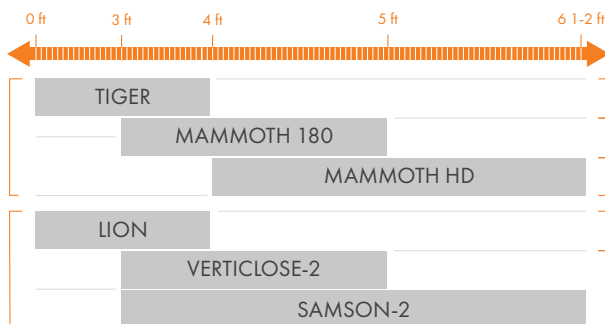
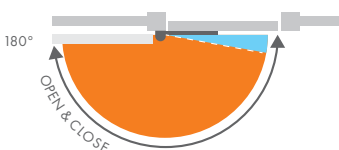


USE WITH EXISTING HINGES

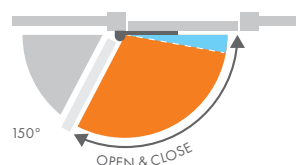


OPENING ANGLE

ALL LOCINOX GATE CLOSERS



SAMSON GATE CLOSER



Max 150° depending on position of hinge and gate closer

FITS CHAIN LINK WITH OPTIONAL BRACKETS	
MAMMOTH-HD	✓
MAMMOTH	✓
TIGER	✓
SAMSON-2	✓
LION	✓



A SILENT
OPENING &
CLOSING



SAFE
FOR
WHEELCHAIR
USERS

PRECISE ADJUSTMENT OF
SPEED & FINAL SNAP
FOR YOUR
COMFORT



VANDAL
PROOF

10

FEATURES
SETTING LOCINOX
GATE CLOSERS APART!



CHILD
& **PET**
FRIENDLY



DURABLE
TESTED FOR
500,000
MOVEMENTS

EFFICIENT
INSTALLATION
FAST & EASY



100%
HYDRAULIC
GREEN &
MAINTENANCE
FREE

EXTREME
WEATHERPROOF

CONSTANT CLOSING SPEED

-22° ► +158°F



3 YEAR
WARRANTY

MAMMOTH-HD

HEAVY DUTY 180° GATE CLOSER AND HINGE IN ONE
FOR GATES UP TO 440 LBS

NEW



RAPTOR HINGE INCLUDED



- ✓ Powder coated aluminum housing
- ✓ Double stainless steel bearing
- ✓ Specifically designed for exterior use: rain & frost-proof
- ✓ Secure, fast, and easy attachment: Quick-Fix mounting bolts
- ✓ 180° closing angle – NO gate stop needed
- ✓ Closing speed unaffected by humidity and temperature changes
- ✓ ADA compliant opening resistance (< 5 lbs) from gate width 4 ft. 7 in and up (max 30 Nm)
- ✓ Adjustable closing speed & final snap
- ✓ Vandal-proof and easy to install
- ✓ Installation gap 1/16" min up to 1-3/8" max (ornamental)
- ✓ Adjustability 3/4" gap and 3/4" height
- ✓ Patented hydraulic damping
- ✓ For left and right opening gates



MAMMOTH-HD-9005

MAMMOTH-HD-ZILV

RECOMMENDED APPLICATIONS

- Ornamental steel
- Ornamental aluminum
- Galvanized/Steel chain link
- For wood and vinyl installations, please contact the manufacturer

INSTALLATION

- New or retrofit installations using Locinox Quick-Fix mounting bolts with 2,000 lbs holding force
- Installs on square or round posts using chain link brackets (p. 15)
- Aligns with ease using the DRILLVISE-II or DRILLVISE-IV installation tools (p. 20)
- No welding required!
- Reversible for left or right opening gates
- Adjustable closing speed and final snap

RECOMMENDED FOR



MAMMOTH

HEAVY DUTY 180° GATE CLOSER AND HINGE IN ONE
FOR GATES UP TO 330 LBS



- ✓ Powder coated aluminum housing
- ✓ Double stainless steel bearing
- ✓ 180° closing angle - NO gate stop needed
- ✓ Patented hydraulic damping
- ✓ Closing speed unaffected by humidity and temperature changes
- ✓ ADA compliant: low opening resistance: max. 16 Nm (3-5 lbs)
- ✓ Adjustable closing speed & final snap
- ✓ Designed for exterior use: rain & frost-free
- ✓ Secure, fast and easy attachment: Quick-Fix anchor bolts
- ✓ Installation gap $\frac{9}{16}$ " min up to $1\frac{3}{8}$ " max (ornamental)
- ✓ Vandal-proof
- ✓ Adjustability $\frac{3}{4}$ " gap and $\frac{3}{4}$ " height



RECOMMENDED APPLICATIONS

- Ornamental steel
- Ornamental aluminum
- Galvanized/Steel chain link (for round installations, use adapters on p. 15)
- For wood and vinyl installations, please contact the manufacturer

INSTALLATION

- New or retrofit installations using Locinox Quick-Fix mounting bolts with 2,000 lbs holding force per each
- Installs on square or round posts using chain link brackets (p. 15)
- Aligns with ease using the DRILLWISE-II or DRILLWISE-IV installation tools (p. 20)
- No welding required!
- Reversible for left or right opening gates
- Adjustable closing speed and final snap

RECOMMENDED FOR



TIGER

COMPACT 180° HYDRAULIC GATE CLOSER AND HINGE IN ONE FOR GATES UP TO 165 LBS



PUMA HINGE INCLUDED



- ✓ Powder coated aluminum housing
- ✓ Double stainless steel bearing
- ✓ 180° closing angle - NO gate stop needed
- ✓ Patented hydraulic damping
- ✓ Closing speed unaffected by humidity and temperature changes
- ✓ ADA compliant: low opening resistance: max. 14 Nm (3-5 lbs)
- ✓ Adjustable closing speed & final action
- ✓ Specifically designed for exterior use: rain & frost-proof
- ✓ Secure, fast and easy attachment: Quick-Fix mounting bolts
- ✓ Installation gap $\frac{7}{16}$ " min up to 1" max (ornamental)
- ✓ Adjustability $\frac{5}{8}$ " gap and $\frac{3}{4}$ " height
- ✓ Fits chain link (gap 1- $\frac{1}{16}$ " to 1- $\frac{11}{16}$ ")

9005

ZILV



TIGER-9005



TIGER-ZILV

RECOMMENDED APPLICATIONS

- Ornamental steel
- Ornamental aluminum
- Galvanized/Steel chain link (for round installations, use adapters on p. 15)
- For wood and vinyl installations, please contact the manufacturer

INSTALLATION

- New or retrofit installations using Locinox Quick-Fix mounting bolts with 2,000 lbs holding force
- Installs on square or round posts using chain link brackets (p. 15)
- Aligns with ease using TIGERDRILL (p. 20)
- No welding required!
- Reversible for left or right opening gates
- Adjustable closing speed and final snap

RECOMMENDED FOR



CLB-TIGER

CHAIN LINK BRACKET FOR
TIGER GATE CLOSER



- ✓ Design gap including brackets: 1- $\frac{3}{8}$ "
- ✓ Brackets for Puma hinge included
- ✓ Gap from 1- $\frac{1}{16}$ " to 1- $\frac{11}{16}$ "



NEW

NEW



CLB-MAMMOTH

CHAIN LINK BRACKET FOR
MAMMOTH GATE CLOSER



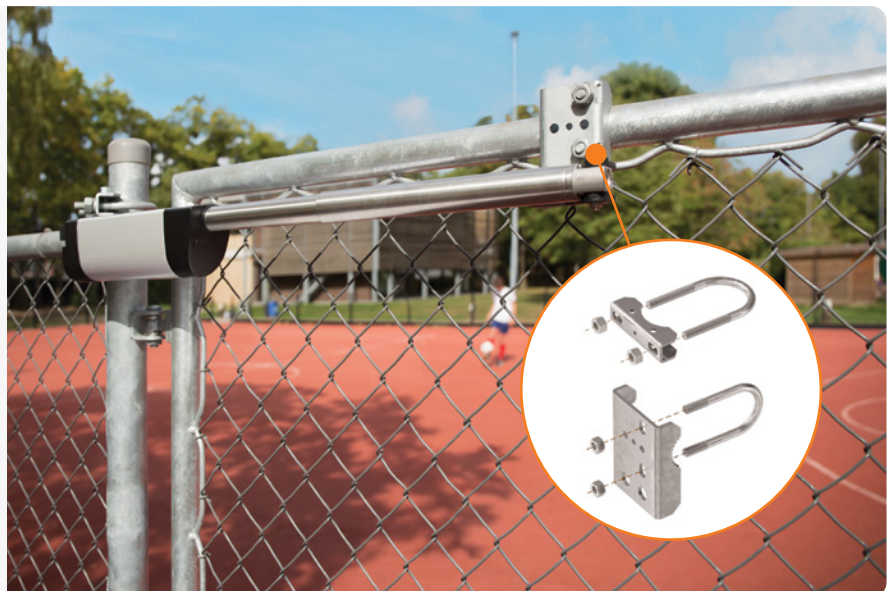
- ✓ Design gap including brackets: 1- $\frac{5}{8}$ "
- ✓ Brackets for Dino hinge included
- ✓ Gap from 1- $\frac{3}{16}$ " to 2- $\frac{1}{16}$ "

SB

CHAIN LINK BRACKET FOR
SAMSON-2 GATE CLOSER



- ✓ Galvanized steel mounting brackets accept standard Quick-Fix anchor bolts on Samson-2



SAMSON-2

HYDRAULIC RETROFIT GATE CLOSER FOR WIDE GATES UP TO 330 LBS



- ✓ Powerful gate closer for retrofit situations
- ✓ Powder coated aluminum housing
- ✓ 150° opening & closing angle depending on the hinge situation
- ✓ Patented hydraulic damping
- ✓ Closing speed unaffected by humidity and temperature changes
- ✓ Adjustable closing speed & final action
- ✓ Specifically designed for exterior use: rain & frost-proof
- ✓ Secure, fast and easy installation: Quick-Fix mounting bolts
- ✓ To use with separate hinges (retrofit)
- ✓ Fits chain link with separate brackets (SB)



ZILV



SAMSON-2

RECOMMENDED APPLICATIONS

- Ornamental steel
- Ornamental aluminum
- Galvanized/Steel chain link (for round installations, use brackets on p. 15)
- For wood and vinyl installations, please contact the manufacturer

INSTALLATION

- Retrofit installation using Locinox Quick-Fix mounting bolts with 2,000 lbs holding force
- Installs on square or round posts using SB chain link brackets (p. 15)
- No welding required!
- Reversible for left or right opening gates
- Adjustable closing speed and final snap
- Samson-2 is a gate closer, not a hinge. Separate, exterior rated hinges are needed and recommended

RECOMMENDED FOR



LION

COMPACT 90° OR 180° RETROFIT GATE CLOSER
FOR GATES UP TO 165 LBS



- ✓ Powerful 180° gate closer for retrofit situations
- ✓ Powder coated aluminum housing
- ✓ 180° closing angle - NO gate stop needed
- ✓ Patented hydraulic damping
- ✓ Closing speed unaffected by humidity and temperature changes
- ✓ ADA compliant: low opening resistance: max. 15 Nm (3-5 lbs)
- ✓ Adjustable closing speed & final action
- ✓ Specifically designed for exterior use: rain & frost-proof
- ✓ Secure, fast and easy attachment: Quick-Fix mounting bolts
- ✓ To use with separate hinges (retrofit)

9005

ZILV



LION-9005



LION-ZILV

RECOMMENDED APPLICATIONS

- Ornamental steel
- Ornamental aluminum
- Galvanized/Steel chain link
- For wood and vinyl installations, please contact the manufacturer
- Concrete

INSTALLATION

- Retrofit installation using Locinox Quick-Fix mounting bolts with 2,000 lbs holding force
- No welding required!
- Reversible for left or right opening gates
- Adjustable closing speed and final snap
- Lion is a gate closer, not a hinge. Separate, exterior rated hinges are needed and recommended.
- Comes with 90° and 180° rail sets for on-site flexibility. The existing hinges will determine the setup needed.
- Aligns with ease using LION-VTC-DRILL (p. 20)

RECOMMENDED FOR



VERTICLOSE-2

HEAVY-DUTY 90° OR 180° RETROFIT HYDRAULIC GATE CLOSER FOR GATES UP TO 330 LBS



- ✓ Powerful 180° gate closer for retrofit situations
- ✓ Powder coated aluminum housing
- ✓ 180° closing angle - NO gate stop needed
- ✓ Patented hydraulic damping
- ✓ Closing speed unaffected by humidity and temperature changes
- ✓ ADA compliant: low opening resistance: max. 15 Nm (3-5 lbs)
- ✓ Adjustable closing speed & final action
- ✓ Specifically designed for exterior use: rain & frost-proof
- ✓ Secure, fast and easy attachment: Quick-Fix mounting bolts
- ✓ To use with separate hinges (retrofit)



VERTICLOSE-2-9005



VERTICLOSE-2-ZILV

RECOMMENDED APPLICATIONS

- Ornamental steel
- Ornamental aluminum
- For wood and vinyl installations, please contact the manufacturer
- Concrete

INSTALLATION

- Retrofit installation using Locinox Quick-Fix mounting bolts with 2,000 lbs holding force
- No welding required!
- Reversible for left or right opening gates
- Adjustable closing speed and final snap
- Comes with 90° and 180° rail sets for on-site flexibility. The existing hinges will determine the setup needed.
- Verticlose-2 is a gate closer, not a hinge. Separate, exterior rated hinges are needed and recommended.
- Aligns with ease using LION-VTC-DRILL (p. 20)

RECOMMENDED FOR



VERTICLOSE-2-WALL

90° OR 180° HYDRAULIC GATE CLOSER FOR
WALL-MOUNTED GATES UP TO 330 LBS



- ✓ Powerful 180° gate closer for retrofit situations
- ✓ Powder coated aluminum housing
- ✓ 180° closing angle - NO gate stop needed
- ✓ Patented hydraulic damping
- ✓ Closing speed unaffected by humidity and temperature changes
- ✓ ADA compliant: low opening resistance: max. 15 Nm (3-5 lbs)
- ✓ Adjustable closing speed & final action
- ✓ Specifically designed for exterior use: rain & frost-proof
- ✓ Secure, fast and easy attachment: Quick-Fix mounting bolts
- ✓ Specially designed arm for wall mounting while guaranteeing a big opening angle

9005

ZILV



VERTICLOSE-2-WALL-9005



VERTICLOSE-2-WALL-ZILV

RECOMMENDED APPLICATIONS

- Ornamental steel
- Ornamental aluminum
- For wood and vinyl installations, please contact the manufacturer
- Concrete

INSTALLATION

- Designed for installations in alleyways or narrow spaces
- Retrofit installation using Locinox Quick-Fix mounting bolts with 2,000 lbs holding force
- Installs with ease on square profiles to concrete or wood columns
- No welding required!
- Reversible for left or right opening gates
- Comes with 90° and 180° rail sets for on-site flexibility. The existing hinges will determine the setup needed.
- The Verticlose-2 Wall is a gate closer, not a hinge. Separate, exterior rated hinges are needed and recommended.

RECOMMENDED FOR

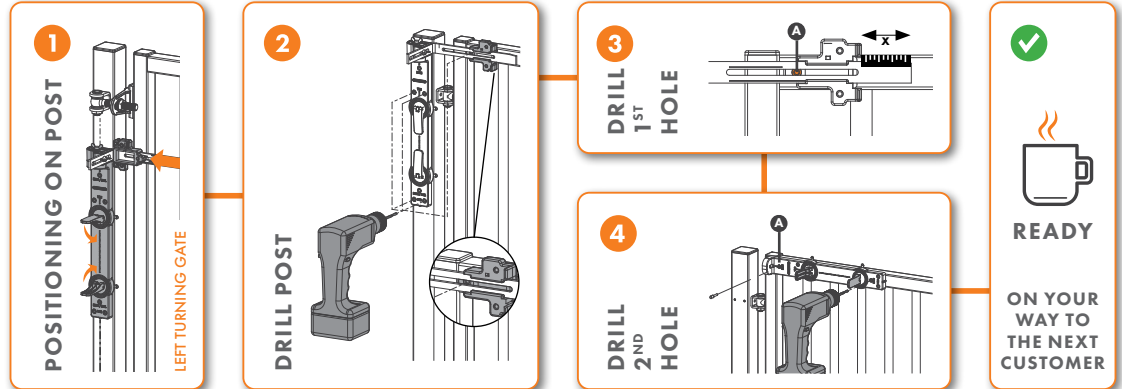


LION-VTC DRILL

ASSEMBLY AND DRILL CALIBER FOR LION AND VERTICLOSE-2 GATE CLOSERS

- ✓ Sturdy case with compartments
- ✓ Spare set with 10 Quick-Fix expanders
- ✓ Includes 2 drill bits Ø5 mm and Ø15 mm

INSTALL IN HALF THE TIME WITH EXTREME ACCURACY



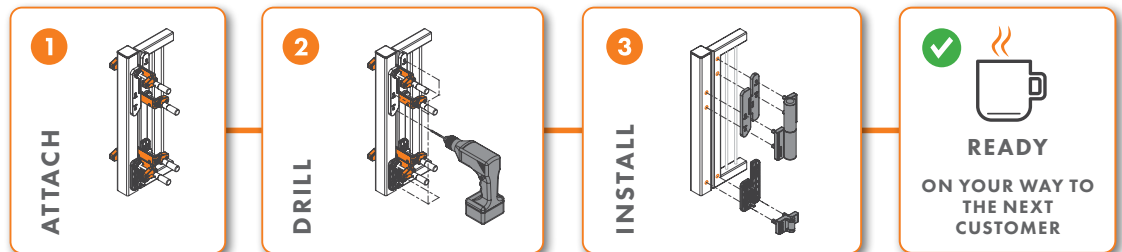
TIGERDRILL

INSTALLATION AND DRILLING JIG FOR TIGER GATE CLOSER

- ✓ Includes 2 drill bits Ø5 mm and Ø15 mm
- ✓ Spare set with 10 Quick-Fix expanders
- ✓ Solid plastic box with compartments for convenient storage
- ✓ Includes accessories for assembly and adjustment of Tiger
- ✓ Recommended to be combined with DRILLVISE-IV



INSTALL IN HALF THE TIME WITH EXTREME ACCURACY



DRILLVISE-2

CLAMP SET FOR GATE FRAME POSITIONING

- ✓ Solid plastic box with compartments for convenient storage
- ✓ 2 special clamps with 1-3/16" to 4-3/4" adjustability with support plates to position gate frames
- ✓ Strong steel clamp with padding to avoid damage



DRILLVISE-4

TOOLBOX WITH 4 LOCINOX CLAMPS

- ✓ Solid plastic box with compartments for convenient storage
- ✓ 4 special clamps with 1-3/16" to 4-3/4" adjustability
- ✓ Strong steel clamp with padding to avoid damage
- ✓ Soft plastic mounting surfaces guarantee a perfect grip without risk of damage



TIGER (p. 14)



SAMSON-2 (p. 16)



LION (p. 17)



VERTICLOSE-2 (p. 18)





LUKY GATE LOCK (p. 25)



**TRADEMARK
HARDWARE**
WWW.TMHARDWARE.COM

Locks & Keeps

Locinox locks guarantee a perfect operating gate. Every lock is thoroughly tested in our own test center where they are exposed to the most extreme circumstances. This ensures us that our locks will work in all weather conditions. We offer a variety of locks for garden gates, industrial gates or swimming pool gates. Locinox locks - the safest solution in fence protection.



25 Swing gate locks

26 Mechanical code locks



27 Panic exit solutions

28 Accessories

29 Slide gate locks

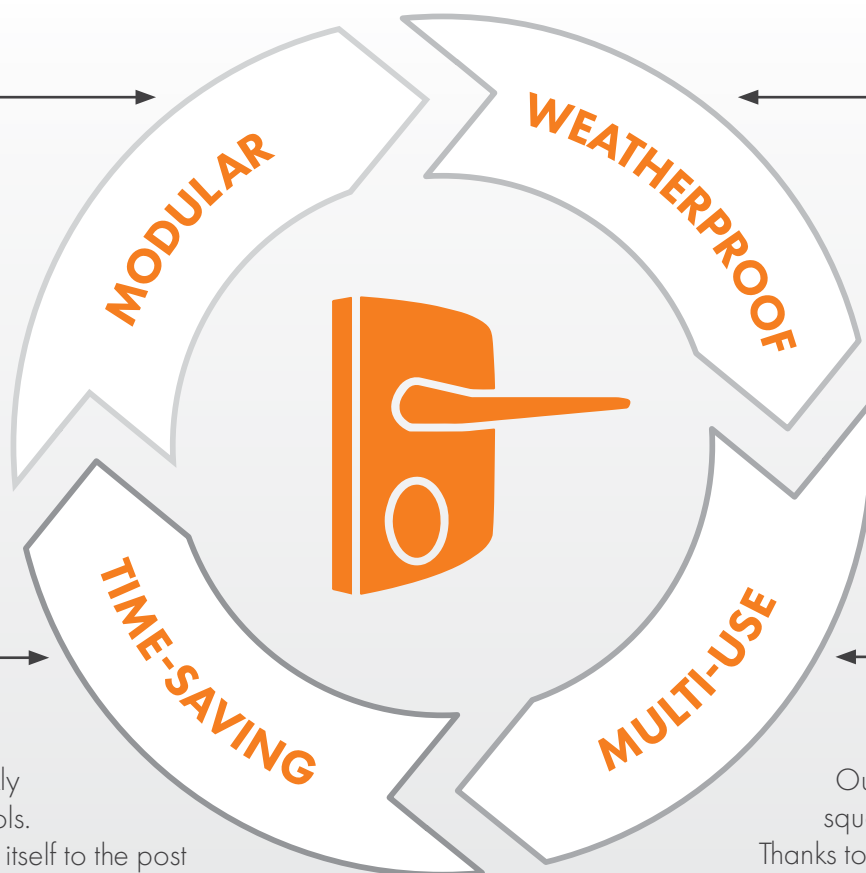
IT'S MORE THAN A LOCK. IT'S PEACE OF MIND.



All our locks feature the same modular drilling pattern for maximum ease and flexibility. Upgrading and swapping out locks has never been easier!



Get the job done quickly thanks to our drilling tools. The Drill-Fix self-centers itself to the post guaranteeing an easy and quick lock installation.



Like all Locinox products, our locks are made with 100% weatherproof components to provide maximum reliability and functionality in all situations.



Our locks attach easily to square and round profiles. Thanks to our new, unique chain link adaptors, the choice is yours.

DRILLFIX

TOOL CASE WITH
CALIBER FOR SURFACE
MOUNTED LOCKS AND
CORRESPONDING KEEPS

- ✓ Tool case with self-centering drilling tool for fast assembly of Locinox surface mounted gate locks and keeps
- ✓ Drill jig can be used for round, square or rectangular profiles from 1-1/4" up to 3"
- ✓ Includes 3 drill bits (Ø9,5 mm, Ø15 mm, Ø18 mm)
- ✓ Useful for installation of Locinox bolt-on locks and keeps in 4 easy steps
- ✓ Includes LA Locitool
- ✓ Includes Allen Key and positioning pin



1 INSTALLATION METHOD FOR ALL OUR LOCKS





LUKY J5

SURFACE MOUNTED US MORTISE CYLINDER GATE LOCK



- ✓ ISO 9227 KTL / E-coated lock box withstands 1000 hours of salt spray test
- ✓ Gate lock with double cylinder dead bolt. Designed for 1-1/8" (28.6mm) mortise profile cylinder
- ✓ Thread size: 1.150 x 32 UNS – Cylinder face: 1.360 (34.5mm) diameter
- ✓ Rekeyable cylinder 1-1/8" Schlage C-keyway 5pin (drilled 6pin) – AR Cam
- ✓ Throw of the deadbolt, 7/8" in 1 turn of the key
- ✓ Key-operated self-latching bolt, allows Free Exit application
- ✓ Adjustment of the bolts up to 3/8" continuous without dismounting the lock box
- ✓ 4-hole mounting with two hex head socket screws
- ✓ The lock box requires a 3-3/8" spacing to the first picket, fitting nicely into most gates



LUKY J5-9005



LUKY J5-ZILV

RECOMMENDED APPLICATIONS

- Ornamental steel
- Ornamental aluminum
- Galvanized/Steel chain link
- For wood and vinyl installations, please contact the manufacturer

INSTALLATION

- Quick & easy bolt-on installation
- No welding required!
- Reversible for either side of the gate
- Spacing needed to insert lock: 3-3/8"
- Easily adjusts up to 3/8" for the bolts without dismounting the lock box
- 4-hole mounting with two hex head socket screws
- Deadbolt adjustable by 7/8" in 1 turn of the key
- Easily installs on square or round posts using the lock adaptor plate (p. 28)
- Installation of a keeper is recommended (p. 28)

RECOMMENDED FOR



VINCI - LMKQ

SURFACE MOUNTED MECHANICAL CODE LOCK



- ✓ ISO 9227 KTL / E-coated lock box withstands 1000 hours of salt spray test
- ✓ Operational code panel on both sides
- ✓ Independent entrance and exit codes
- ✓ Polyamide rain and dust cover
- ✓ Easy and fast set-up or modification of the access codes
- ✓ With adjustable rollerbolt for easy closing
- ✓ Extremely strong and user-friendly mechanism
- ✓ Automatic code reset after opening by means of the handle



9005

VINCI - LMKQ-9005



ZILV

VINCI - LMKQ-ZILV

FREE VINCI - LFKQ

SURFACE MOUNTED MECHANICAL CODE LOCK WITH
SECURED ENTRANCE AND FREE EXIT



- ✓ ISO 9227 KTL / E-coated lock box withstands 1000 hours of salt spray test
- ✓ Operational code panel on both sides
- ✓ Independent entrance and exit codes
- ✓ Polyamide rain and dust cover
- ✓ Easy and fast set-up or modification of the access codes
- ✓ With adjustable rollerbolt for easy closing
- ✓ Extremely strong and user-friendly mechanism
- ✓ Automatic code reset after opening by means of the handle



9005

FREE VINCI-LFKQ-9005



ZILV

FREE VINCI-LFKQ-ZILV

PUSHBAR-L

PANIC RELEASE BAR FOR LOCKS



- ✓ Black powder coated aluminum push bar with stainless steel mechanism
- ✓ Fast and easy installation with Quick-Fix
- ✓ For left and right turning gates
- ✓ Blinded $\frac{5}{16}$ " follower included
- ✓ Possible to combine with half handle sets with $\frac{5}{16}$ " follower
- ✓ Maximum gate width: 5 ft. for 55- $\frac{1}{8}$ " version



9005

PUSHBAR-L-1400

3006PUSH

FREE-EXIT PUSH PAD



- ✓ The set is adaptable on all surface mounted Locinox locks with aluminum U-lock box
- ✓ The 3006PUSH replaces the handles
- ✓ Facilitates the opening of the gate

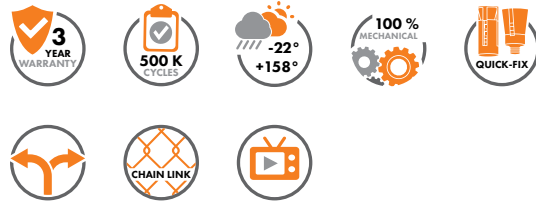


ZILV

3006PUSH-ZILV

SAKL/SHKL/SF KEEP

ADJUSTABLE SECURITY KEEP OUT OF STAINLESS STEEL



- ✓ Stainless steel keep with polyamide finishing
- ✓ Stop plate in extruded aluminum with rubber strip
- ✓ Easy left or right hand changing
- ✓ Innovative Quick-Fix mounting
- ✓ Adjustable for profiles: 1-1/2" to 2-1/2"
- ✓ Min. gap 1 1/4" for SA/SH, 3/8" for SF
- ✓ For rectangular and round profiles

SHIELD

ANTI-THEFT PROTECTION PLATES



- ✓ Vandal-proof protection plate
- ✓ Compatible with Locinox surface mounted locks
- ✓ Serves as a pick plate - use for extra security
- ✓ Shield can easily be mounted on the surface mounted lock and is available for gate frames of 1-1/2" to 2-1/2"
- ✓ Can be combined with keeps and Modulec-strike

SHIELD-9005

9005

SHIELD-ZILV

ALUM

FAST & EASY INSTALLATION ON CHAIN LINK!

6403

ADAPTOR PLATE FOR SH KEEPS



3019LA

ADAPTOR PLATE FOR LA AND LS LOCKS



3018LA

ADAPTOR PLATE FOR SA KEEPS



3018MOD

CHAIN LINK ADAPTER FOR MODULEC SA OR SH



CLH-LA

CHAIN LINK TENSION BAR FOR LOCKS



CLH-CO

CHAIN LINK TENSION BAR FOR CODE LOCKS



LSKZ

SURFACE MOUNTED SLIDING GATE LOCK



- ✓ ISO 9227 KTL / E-coated lock box withstands 1000 hours of salt spray test
- ✓ Chassis, mechanism and Twistfinger in stainless steel
- ✓ Adjustable for horizontal or vertical mounting of the keep (catch bolt)
- ✓ Mounting with 2 hex head socket screws
- ✓ Innovative closing system
- ✓ Stainless steel collar around the Twistfinger prevents cutting through the Twistfinger (catch bolt)
- ✓ Standard with reinforced aluminum handle pair
- ✓ 3006S: Square 10 mm shaft (appx 5/16")



9005



ZILV

LSKZ-9005

LSKZ-ZILV

LEONARDO - LLKZ

MECHANICAL CODE LOCK FOR SLIDING GATES



- ✓ 100% mechanical: no battery or electricity required
- ✓ Adjustable for horizontal or vertical mounting of the keep (catch bolt)
- ✓ Operational code panel on both sides
- ✓ Independent entrance and exit codes
- ✓ Equipped with dust and rain covers
- ✓ Easy and fast set-up or modification of the access codes
- ✓ Accepts 4 to 6 digit code combinations
- ✓ Extremely strong and user-friendly mechanism
- ✓ Automatic code reset after opening by means of the handle
- ✓ Anti-code detection with integrated security press plate



9005



ZILV

LLKZ-9005

LLKZ-ZILV



**TRADEMARK
HARDWARE**

WWW.TMHARDWARE.COM

B-MAG ELECTROMAGNETIC
LOCK (p. 34) AND **LION**
HYDRAULIC GATE CLOSER (p. 17)



Automation & Electronics

Automation has become a fundamental factor in the fence & gate sector. Locinox offers a wide range of solutions to support user-friendly smart gates and fences.



32 Keypads



33 Electric strikes



34 Electromagnetic locks

36 Electrical drop bolts

37 Electrical accessories



**TRADEMARK
HARDWARE**
WWW.TMHARDWARE.COM



SLIMSTONE

STURDY, WEATHER RESISTANT KEYPAD WITH
INTEGRATED RELAY



- ✓ IP68 rated - Extremely resistant to water and dust
- ✓ Aluminum vandal-proof housing with scratch-resistant textured lacquer
- ✓ Energy efficient adjustable white led lights
- ✓ Available with 1 or 2 relays
- ✓ Highly resistant stainless steel push buttons tested for 1,000,000 pushes and more
- ✓ Easy programming of up to 100 user codes
- ✓ Smart heating element guarantees frost-free use
- ✓ Tested from -22°F to 185°F
- ✓ Adjustable time range between pulse and timer mode (100ms - 99s)
- ✓ Voltage: 10 up to 26 V AC/DC
- ✓ Current: 1.0 A (with heating) - Pmax= 13.5W (with max heating)
- ✓ 6-1/2ft connection cable included

9005



SLIMSTONE-9005

ZILV



SLIMSTONE-ZILV

RECOMMENDED APPLICATIONS

- Ornamental steel
- Ornamental aluminum
- Concrete
- Galvanized steel
- For wood and vinyl installations, please contact the manufacturer

INSTALLATION

- Easy & fast bolt-on installation
- Plug & play with 1 or 2 integrated relays (Slimstone-2 will connect 2 devices and operate separately using 2 different codes)
- 6.5 ft. connection cable included
- Programs up to 100 codes
- Reversible for either side of the gate

RECOMMENDED FOR



MODULEC

SURFACE MOUNTED ELECTRIC STRIKE



- ✓ Tested up to 500,000 movements
- ✓ Fast and easy fixation with Quick-Fix
- ✓ 660 lbs holding force on the latch bolt
- ✓ Same drilling pattern as SA, SH and SM keeps
- ✓ Easy left or right hand changing
- ✓ Corrosion-resistant: black anodized housing
- ✓ Adjustable for profiles: 1-1/2" to 2-1/2"
- ✓ Voltage: 12V-24V AC/DC
- ✓ Consumption: 12V - 1.25A / 24V - 0.62A
- ✓ Power: 15W



9005



ZILV

MODULEC-SA-9005

MODULEC-SH-ZILV

3018MOD-SA/SH

ADAPTOR PLATE FOR MODULEC STRIKE



- ✓ Aluminum adaptor plate for Modulec on round profiles
- ✓ Black anodized
- ✓ Separate versions for SA and SH available
- ✓ Easily installed between strike and post

RECOMMENDED APPLICATIONS

- Ornamental steel
- Ornamental aluminum
- Galvanized steel
- For wood and vinyl installations, please contact the manufacturer

INSTALLATION

- Quick & easy bolt-on installation using Locinox Quick-Fix mounting bolts
- Uses the same drilling pattern as SA and SH keeps
- Reversible for either side of the gate

RECOMMENDED FOR





B-MAG

INTEGRATED MAGNET LOCK FOR SWING GATES



- ✓ Guaranteed holding force tested on every Maglock
- ✓ 500h salt spray resistant! SGS certified (ISO 9227)
- ✓ Special two-layer protective coating developed for outdoor use
- ✓ Anti-residual magnetism kick-off system
- ✓ Minimal pulling force: 2,500N
- ✓ Available for 600 or 1,200 lbs
- ✓ Current: 460mA/12V or 230mA/24V



9005



ZILV

B-MAG-9005

B-MAG-ZILV

S-MAG

ELECTROMAGNETIC LOCK FOR SLIDE GATES



- ✓ Guaranteed holding force tested on every Maglock
- ✓ 500h salt spray resistant! SGS certified (ISO 9227)
- ✓ Special two-layer protective coating developed for outdoor use
- ✓ Anti-residual magnetism kick-off system
- ✓ Minimal pulling force: 2,500N
- ✓ Current: 460mA/12V or 230mA/24V



9005



ZILV

S-MAG-9005

S-MAG-ZILV



MAG

SURFACE MOUNTED ELECTROMAGNETIC LOCK
WITH INTEGRATED PULL/PUSH HANDLES



- ✓ Guaranteed holding force tested on every Maglock
- ✓ 500h salt spray resistant! SGS Certified (ISO 9227)
- ✓ Perfect for pedestrian gates
- ✓ Special two-layer protective coating developed for outdoor use
- ✓ SGS Certified
- ✓ Powder coated aluminum housing
- ✓ Anti-residual magnetism kick-off system
- ✓ Raised edge on the magnet housing makes it impossible to put a crowbar between the magnet and the armature plate
- ✓ Fast and easy fixing by means of 5 holes with Quick-Fix



9005

MAG-9005



ZILV

MAG-ZILV

MAGMAG

SURFACE MOUNTED ELECTROMAGNETIC LOCK
WITHOUT INTEGRATED HANDLES



- ✓ Guaranteed holding force tested on every Maglock
- ✓ 500h salt spray resistant! SGS Certified (ISO 9227)
- ✓ Perfect for driveway gates
- ✓ Special two-layer protective coating developed for outdoor use
- ✓ SGS Certified
- ✓ Powder coated aluminum housing
- ✓ Anti-residual magnetism kick-off system
- ✓ Raised edge on the magnet housing makes it impossible to put a crowbar between the magnet and the armature plate
- ✓ Fast and easy fixing by means of 5 holes with Quick-Fix



9005

MAGMAG-9005



ZILV

MAGMAG-ZILV

ELECTRADROP

MOTORIZED ELECTRICAL DROP BOLT



- ✓ Vandal-proof, powder coated aluminum housing
- ✓ To be connected to the warning light on automated gates (min 3 sec prewarning signal) or directly on the gate automation
- ✓ Automatic detection and memorization of the continuous or pulse signal
- ✓ Mechanical release possible (by key) in case of emergency
- ✓ Fitted with relay for drop bolt detection
- ✓ Obstacle detection with automatic stop of the drop bolt in case of a pressure exceeding 40 lbs



9005

ELECTRADROP-9005



ZILV

ELECTRADROP-ZILV

TRICONE

DESIGN LED-LIGHTING FOR GATES



- ✓ Fast and easy installation with Quick-Fix
- ✓ Aluminum housing with plastic (POM) cable guiding
- ✓ 3 white High-Flux LED Lights
- ✓ ± 140° beam angle
- ✓ Life expectancy: 50,000 hours
- ✓ 300 lux (illuminance)
- ✓ Power: ± 1W (with 12V DC)
- ✓ 12V AC or DC (max. 18V DC or peak AC)
- ✓ Minimal power consumption and long lasting performance
- ✓ Resin encapsulated print circuit board for weather resistance
- ✓ Power up to 20 Tricones with 1 Locinox AC transformer or up to 15 with the DC power
- ✓ IP54



9005

TRICONE-9005



ZILV

TRICONE-ZILV

PB-1

POWERBOX - TRANSFORMER HOUSING



- ✓ Waterproof transformer box - IP66
- ✓ Powder coated aluminum housing
- ✓ DIN-rail mount: 3-3/8" (5 units)
- ✓ Supplied with 2 gland nuts M20 and 2 stop plugs M16
- ✓ Designed with heat-dissipation fins at the back

PB-1-9005

9005

PB-1-ZILV

ZILV



DVK-HD

REINFORCED, BRAIDED STAINLESS STEEL GUIDING CABLE



- ✓ Vandal-proof, stainless steel, braided guiding cable
- ✓ Available with 17-3/4" or 25-9/16" braided cable
- ✓ Protects electrical wiring against vandalism, moist, dirt and vermin
- ✓ Strong fixation by means of 8 self-tapping stainless steel screws
- ✓ Cable entry: aluminum housing
- ✓ Inner diameter: Ø3/8"

DVK-HD-ZILV

ZILV



DC-POWER

SAFETY POWER SUPPLY 12V OR 24V DC



- ✓ Mounting on DIN-rail or directly
- ✓ Power: 25W
- ✓ Primary voltage: 110V
- ✓ Secondary voltage: available in 12V or 24V
- ✓ Aluminum housing
- ✓ Robust control module: encapsulated for superior humidity resistance



Hinges & Drop bolts

Hinges support the weight of the gate and ensure it opens and closes smoothly. Because of this heavy task, our hinges are hot-dip galvanized or made of stainless steel. Thanks to our wide range we offer a solution for every situation. Our patented 4D hinge is a top-of-the-line innovation. This hinge is adjustable in 4 dimensions (height/depth/alignment/left or right turning).

Note: The horizontal width of the gate divided by the vertical distance between the hinges installed should be equal or less than XX

Hinge Quick-Guide

Hinge	Page	Min gap gate frame to post	Max adjustability	Max gate weight in lbs*
BOLTON 4D16	p 39	1/4"	2-3/8"	440
GBMU4D12	p 39	7/8"	1-5/8"	220
GBMU4D16	p 39	1-3/8"	2-3/8"	440
GBMU4D20	p 39	1-3/8"	4-7/8"	880
GBMU-X-M12	p 39	1/4"	1-3/4"	220
GBMU-X-M16	p 39	5/16"	2-3/8"	440
GBMU-X-M18	p 39	5/16"	2-1/8"	550
GBMU-X-M20	p 39	1/2"	3-1/8"	880
GBMU-X-M22	p 39	1/2"	3-1/2"	970
GAM-12-130	p 39	1-13/16"	3-5/16"	220
Puma	p 40	3/8"	5/8"	132
Dino	p 40	1/2"	3/4"	330
Bearing Hinge 40x40	p 40	1"	1-3/8"	440
Bearing Hinge 50x50	p 40	3/8"	1-3/8"	440
3DM	p 40	5/8"	5/8"	330
3DW	p 41	0"	5/8"	770

*All gate weights specified are intended for pedestrian gates. For wider (driveway) gates, please contact Locinox



BOLTON4D

180° BOLT-ON 4D ADJUSTABLE HINGE



- ✓ Easy to fix with Quick-Fix or bolt through fixing
- ✓ Vandal-proof eyebolt & crossbolt
- ✓ 180° opening
- ✓ Eliminates the need to stock left and right swinging gates
- ✓ 1 1/8" adjustable in height
- ✓ 1" adjustable in depth
- ✓ U-clamp and GRIP in aluminum
- ✓ Hot dip galvanized eyebolt and crossbolt

BOLTON4D-9005

9005

BOLTON4D-ZILV

ALUM

GBMU4D

180° WELD-ON 4D ADJUSTABLE HINGE



- ✓ 180° opening and closing angle
- ✓ Grip: hot dip galvanized
- ✓ Eliminates the need to stock left and right swinging gates
- ✓ Only the grip is available in different RAL-colors
- ✓ Eyebolt M16: (5/8") hot dip galvanized
- ✓ 7/8" adjustability in height
- ✓ Version Z: U-shaped ear plate and groove plate zinc-plated

BOLTON4D-9005

9005

BOLTON4D-ZILV

ALUM

GBMU

180° 3-WAY ADJUSTABLE HINGE



- ✓ U-shaped ear plate and groove plate in black steel to weld on
- ✓ Eyebolt, bolt & nut, hot-dip galvanized
- ✓ Available in 5 sizes: M12, M16, M18, M20 and M22
- ✓ 180° opening and closing angle

GAM-12

90° 2-WAY ADJUSTABLE BEARING HINGE



- ✓ Length of the threaded axle: 130 mm or 150 mm
- ✓ Hinge axle M12 in stainless steel
- ✓ 90° opening and closing angle
- ✓ Welding ear in black steel

PUMA

COMPACT 2-WAY ADJUSTABLE 180°
SURFACE MOUNTED HINGE



- ✓ Resistant to extreme weather conditions thanks to the stainless steel hinge axle
- ✓ 180° opening and closing angle
- ✓ For gates up to 3.5 ft wide and 135 lb
- ✓ For left and right opening gates
- ✓ Aesthetic design & powder coated aluminum housing
- ✓ 3/4" vertical adjustability
- ✓ Fast and easy installation with Quick-Fix
- ✓ 5/8" width-adjustable

PUMA-9005

9005

PUMA-ZILV

ZILV

DINO

180° DOUBLE BEARING HINGE



- ✓ Opening angle: 180°
- ✓ Contains 2 stainless steel bearings
- ✓ Vandal-proof
- ✓ Can be combined with the Mammoth
- ✓ For gates up to 330 lbs and 5 ft. wide
- ✓ For left and right handed gates
- ✓ Aesthetic design
- ✓ Powder coated aluminum housing
- ✓ Fast and easy fixation with Quick-Fix

DINO-9005

9005

DINO-ZILV

ZILV

BEARING HINGE

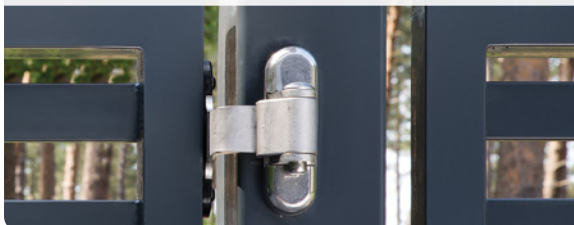
90° 2-WAY ADJUSTABLE BEARING HINGE



- ✓ Specially developed for automated gates
- ✓ Rust resistant housing
- ✓ Maintenance free sealed bearing
- ✓ Can be used as top & bottom hinge

3DM

180° 3-WAY ORNAMENTAL HINGE



- ✓ 180° hinge for metal & aluminum gates with 4" posts
- ✓ Innovative Quick-Fix mounting
- ✓ Reversible for left or right hand swing gates
- ✓ 3/8" adjustable in width, 3/8" in height and 3/8" in depth
- ✓ Vandal-proof
- ✓ Hinge socket, axle and socket cover plate in stainless steel

3DW

180° 3-WAY STRAP HINGE



- ✓ 180° hinge for wooden gates
- ✓ Reversible for left or right hand swing gates
- ✓ Vandal-proof
- ✓ Hinge socket, axle and socket cover plate in stainless steel

KEYDROP

KEY LOCKABLE DROP BOLT



- ✓ Throw: 5-1/2"
- ✓ Lockable drop bolt with cylinder
- ✓ Same drilling pattern as VSF and VSA
- ✓ Possible to match same key as gate lock
- ✓ Height adjustability of the drop bolt: 4"
- ✓ Height adjustability in 3 positions: 2" per position
- ✓ The gate can be locked in open or closed position
- ✓ For square gate profiles 1-1/4" or larger

KEYDROP-9005

9005

KEYDROP-ZILV

ALUM

VSF/VSA

HOT-DIP GALVANIZED DROP BOLT



- ✓ Aluminum head block and housing
- ✓ For gate profiles 1-1/2" or more
- ✓ Height adjustability of the drop bolt: 4"
- ✓ Throw: 5-1/2"
- ✓ Fast and easy fixation with Quick-Fix
- ✓ Easy to retrofit

VSF/VSA-9005

9005

VSF/VSA-ZILV

ZILV

EGS

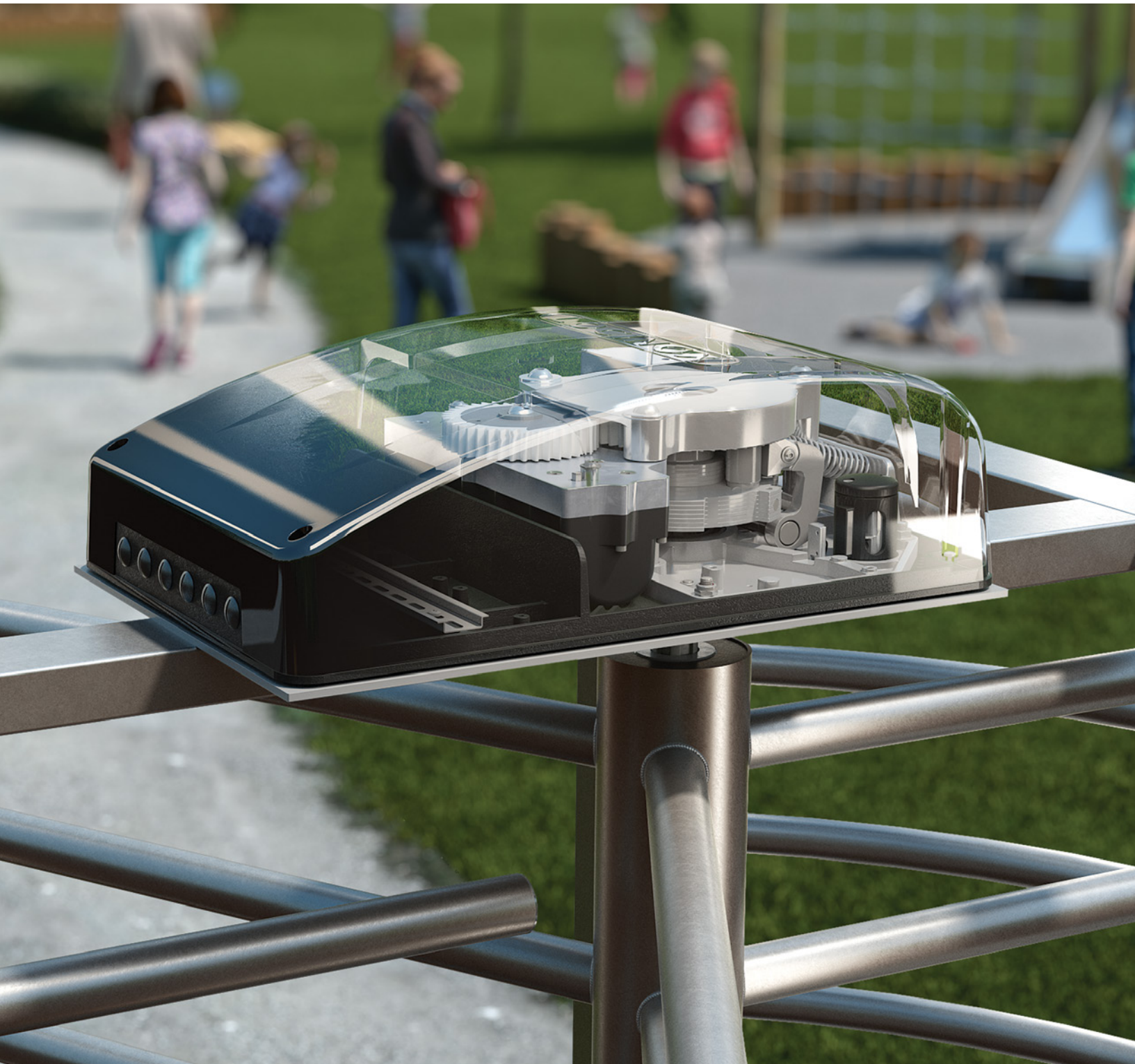
ECONOMIC GROUND
CATCH FOR DROP BOLT



- ✓ Simple and economic In-ground catch designed to put in concrete
- ✓ Without stop plate
- ✓ Hot-dip galvanized base-plate with polypropylene catcher
- ✓ For drop bolts with a maximum bolt diameter of 3/4"

Turnstiles

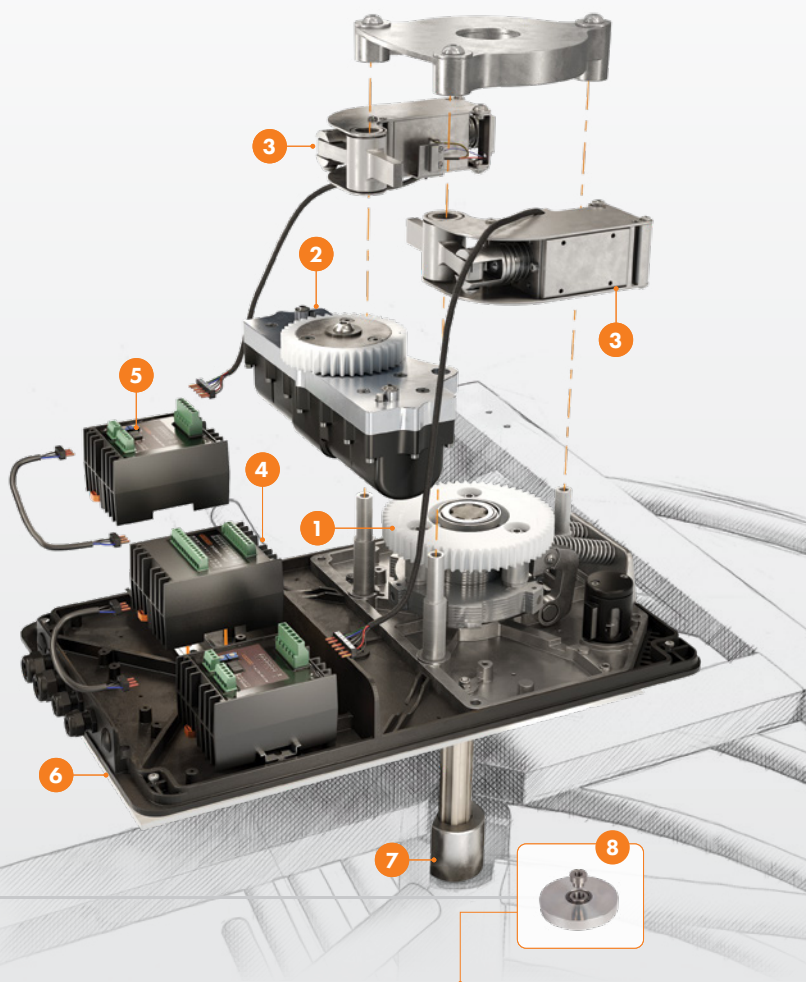
The Locinox (electro)mechanical control unit allows you to easily create a maintenance free and high quality turnstile. You have an (electro)mechanical unit at your disposal with which you can match the design of your turnstile to the design of your fencing!



(ELECTRO)MECHANIC CONTROL UNIT FOR TURNSTILES

THE COMPLETE TURNITEC SOLUTION

- 1 TT-BM3S**
The essential module for any turnstile
- 2 TT-DM3**
Recommended hydraulic damping mechanism for extra user comfort
- 3 TT-FO32/TT-FC32**
Fail Open or Fail Close electromechanical module for access control
- 4 DC-POWER-24V-25W**
Robust power supply with aluminum housing
- 5 TT-CL2**
Counter and passing light signal module for visitor flow management
- 6 TT-BSP**
Welding plate for fast and perfect installation of Turnitec on any turnstile
- 7 TT-SAH**
Recommended for perfect connection of the basic module with the spline axle
- 8 TT-PIVOT**
Lower bearing for a smooth operation



POPULAR APPLICATIONS



PARKING SITES

ELECTROMECHANICAL
ACCESS CONTROL
FOR EXTRA SECURITY



AIRPORTS



PUBLIC AREAS

MECHANICAL
FREE ENTRY AND EXIT
OR LOCKED



SCHOOLS



**TRADEMARK
HARDWARE**
WWW.TMHARDWARE.COM

#WE ARE LOCINOX



FORWARD

Innovation as the engine
of your growth



MODULARITY

Designed with flexibility
at every moment



ADDED VALUE

High quality to ensure
your peace of mind



24/7 WEBSHOP

Order when
it suits you



FULL SERVICE

Exceptional
after-sales service



3 YEAR WARRANTY

Sustainable solutions
in the very long term



TRANSPARENCY

A sincere and clear
communication, day after day



RELIABLE

Our promises and
deadlines are always met



LOYAL

Long-term relationships and a
win-win situation for everyone

LOCINOX USA LLC

460 Windy Point Drive
Glendale Heights
IL 60139 - USA

 877- LOCINOX
 salesusa@locinox.com

v2020



**TRADEMARK
HARDWARE**
WWW.TMHARDWARE.COM

For additional product details, drawings, specs or reference pictures, visit our website:  www.locinoxusa.com