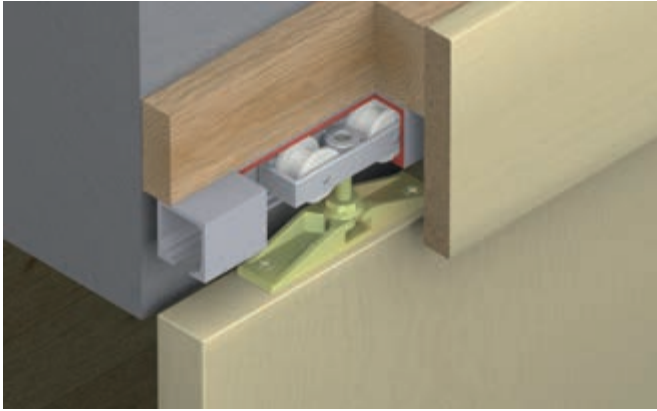
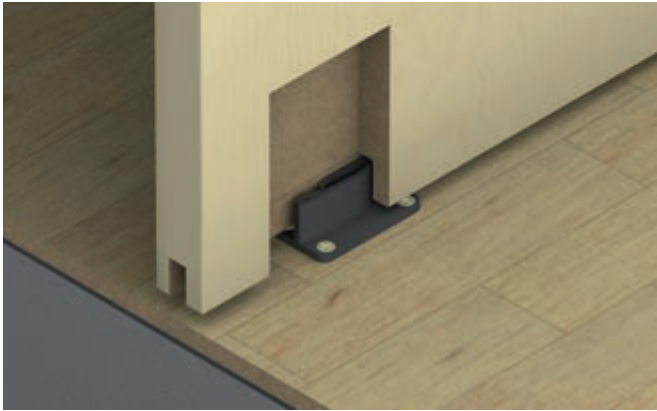


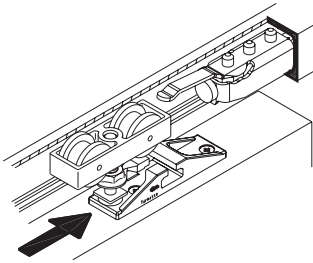
Hawa Junior 40 Z



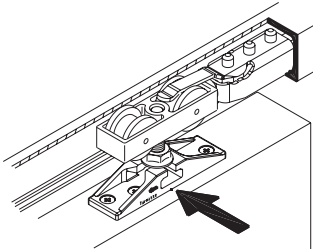
- > For 1 and 2 sliding wood doors
- > Door weight: max. 40 kg (88 lbs.)
- > Door height: max. 4 m (13' 1 1/2")
- > Door width: max. 3 m (9' 10 1/8")
- > Door thickness: min. 22 mm (7/8")
- > Smooth, quiet operation
- > Outstanding durability
- > Rattle-free bottom guide
- > Simple installation
- > Special two-way suspension
- > Vertically and laterally adjustable
- > Door stop with adjustable retention spring



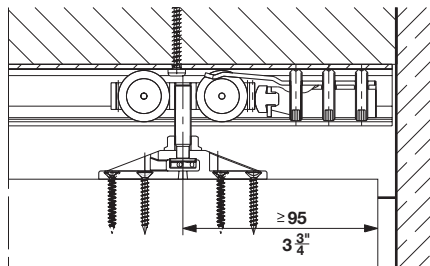
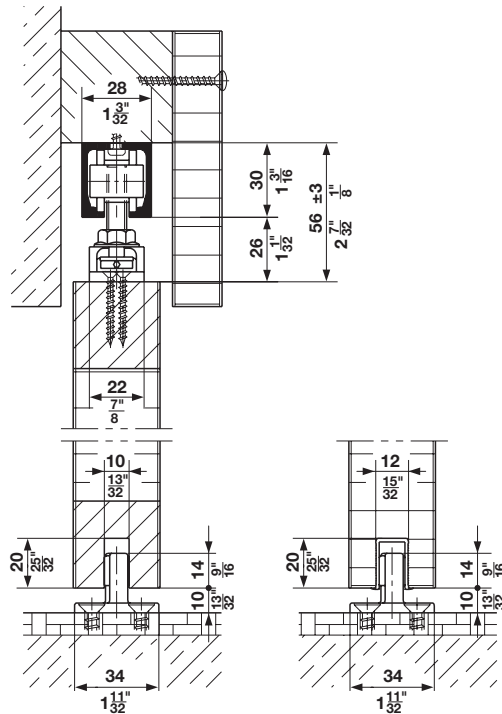
The two-way suspension bracket allows the door to be hung and to be taken off in two different ways:



1. From the side
 Fixed pocket cover doesn't have to be removed.
 Cover plate above opening has to be removable.



2. From the front



Dimensional data not binding. Dimensions in mm, inches are approximate. We reserve the right to alter specifications without notice.



Sliding Door Hardware

Hawa Junior 40 Z Sets

	Model	Door weight	Supplied with	Item No.
For 1 sliding door without upper track	Junior 40 Z with 1 track stopper	≤40 kg (88 lbs.)	2 running gears 2 suspension plates incl. suspension M8 bolts, set nuts and mounting screws 1 track stopper with retaining spring 1 wall buffer 1 rattle-free floor guide 1 height adjusting pin	940.41.006
	Junior 40 Z with 2 track stoppers	≤40 kg (88 lbs.)	2 running gears 2 suspension plates incl. suspension M8 bolts, set nuts and mounting screws 2 track stoppers with retaining spring 1 wall buffer 1 rattle-free floor guide 1 height adjusting pin	940.41.016

Note
Order 2 sets for a bi-parting sliding door application.

→ Complete Sets with upper tracks for 1 sliding door

Door panel width	Track length	Supplied with	Item No.
Up to 700 mm (27 9/16")	1.4 m (4' 7 1/8")	1 fitting set 940.41.006 and 1 upper track 940.40.140	407.56.143
Up to 800 mm (31 1/2")	1.6 m (5' 3")	1 fitting set 940.41.006 and 1 upper track 940.40.160	407.56.161
Up to 900 mm (35 7/16")	1.8 m (5' 10 7/8")	1 fitting set 940.41.006 and 1 upper track 940.40.180	407.56.189
Up to 1000 mm (39 3/8")	2.0 m (6' 6 3/4")	1 fitting set 940.41.006 and 1 upper track 940.40.200	407.56.205



→ Upper Tracks and Accessories

Description		Material	Finish	Length	Item No.
Upper track, pre-drilled 47.5 x 31 mm (1 7/8" x 1 7/32")		Aluminum	clear anodized	1.4 m (4' 7 1/8")	940.40.140
				1.6 m (5' 3")	940.40.160
				1.8 m (5' 10 7/8")	940.40.180
				2.0 m (6' 6 3/4")	940.40.200
				2.5 m (8' 2 7/16")	940.80.633
				3.0 m (9' 10 1/8")	940.40.300
				4.0 m (13' 1 1/2")	940.40.400
6 m (19' 8 1/4")	940.40.600				
Guide rail, glue-in type		Plastic	black	1.3 m (4' 3 3/16")	940.41.130
End cap for upper track		Plastic	anthracite	–	940.40.066
Track stopper with adjustable retaining spring		–	–	–	940.40.041
SoftMove 40, soft close mechanism, maximum capacity 40 kg (88 lbs.)		–	–	–	940.80.330



Note
Each Hawa SoftMove 40 requires a track stopper. For applications that require a SoftMove in both directions either order the fitting set that includes two track stoppers or one additional track stopper. For additional information on SoftMove 40, see page 1.229.

Hawa angle profile	page 1.230
Hawa SoundEx bracket	page 1.231
Hawa confort guides	page 1.232
Pull handles	pages 2.3–2.29
Flush pulls	pages 1.394–1.396
Sliding door locks	pages 1.389–1.394

Dimensional data not binding. Dimensions in mm, inches are approximate. We reserve the right to alter specifications without notice.