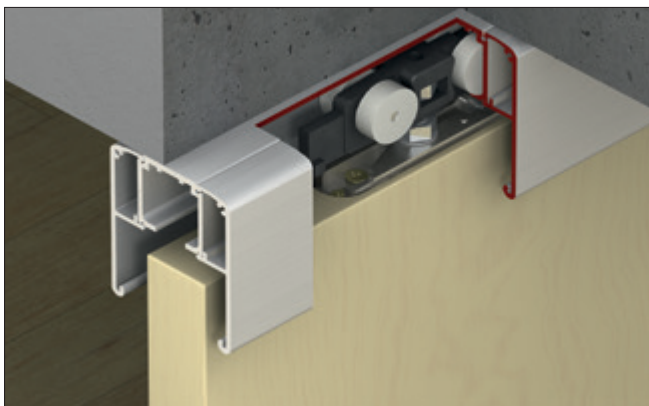


Slido Classic 40-O to 120-O

- Door weight: 40 – 120 kg (88 – 264 lbs.) per door
- Recessed door connection
- For 1 and 2 sliding wood doors
- Height adjustable: ± 3 mm (1/8")
- Suspension with recessed flange clip (without tools)

SLIDO



Slido Classic O Set

- For 1 sliding door without upper track

Soft Close	Version	Door width	40-O 40 kg (88 lbs.)	60-O 60 kg (132 lbs.)	80-O 80 kg (176 lbs.)	120-O 120 kg (264 lbs.)
Without	A	–	940.42.114	940.60.118	940.82.145	941.02.120
On one side	B	≥ 592 mm (23 5/16")	940.43.119	–	940.82.565	941.02.116
On both sides	E	≥ 916 mm (36")	940.43.004	–	940.82.566	941.02.117

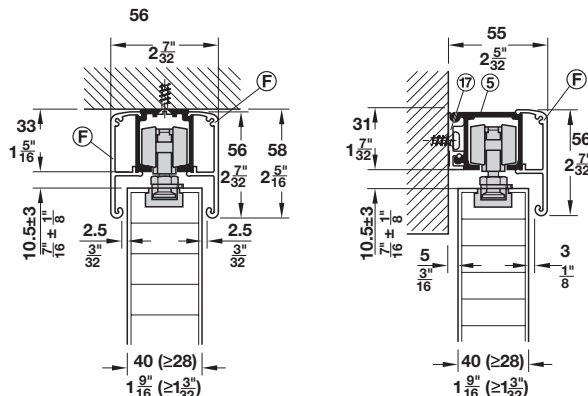
Note

End cap for ceiling installation with fascia on both sides is not available. One pair of end caps can be glued vertically in the center of the upper track (optional). Please order track, fascias and accessories separately. For bi-parting sliding doors, please order 2 sets per opening.

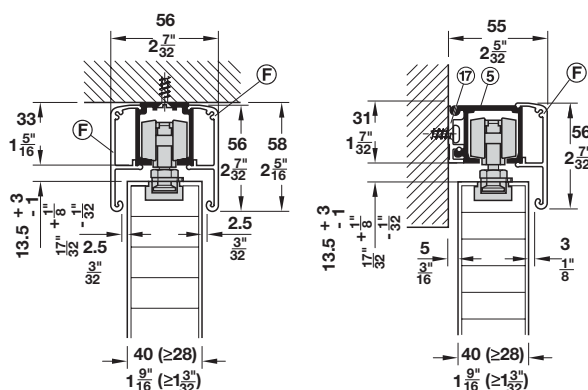
Sliding door locks	pages 1.357, 1.364-1.368
Flush pulls	pages 1.363, 1.371-1.373
Pull handles	pages 2.10-2.32
Tracks, fascias and accessories	pages 1.16-1.17
Track cleaner	page 1.37

Ceiling installation and wall mounting

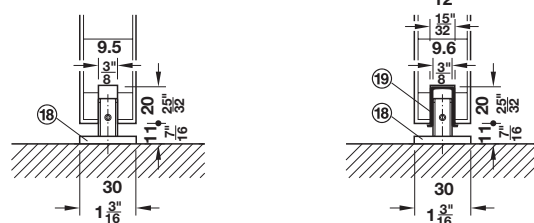
For 40-O, 60-O, 80-O



For 120-O



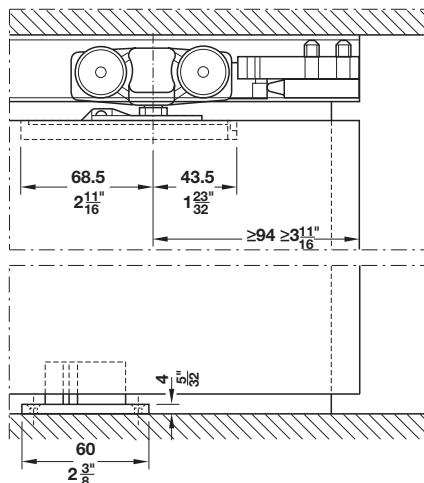
Rattle-free floor guide



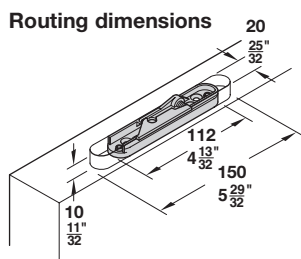
Without guide channel

With guide channel

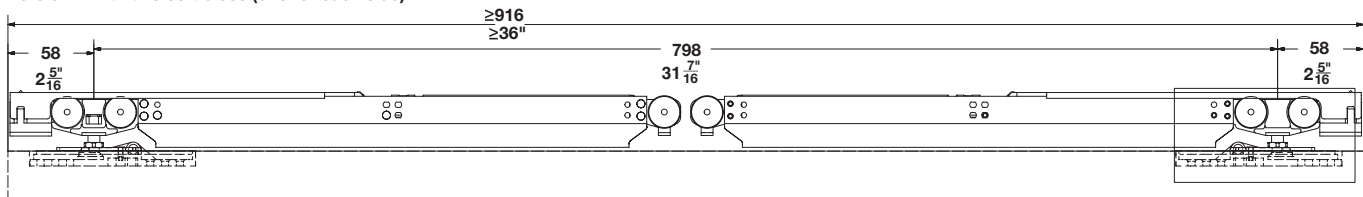
Slido Classic 40-O to 120-O



Section guide and trolley hanger



Version E with two soft close (one for each side)

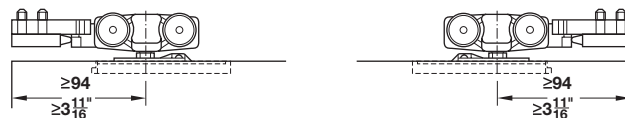


For Classic 120-O



Versions overview

Version A without soft close



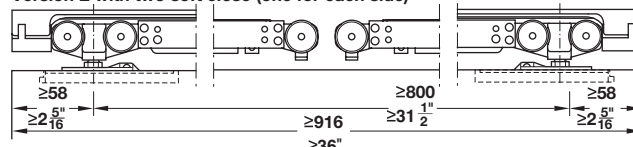
For Classic 40-O - 80-O

Version B with soft close on one side



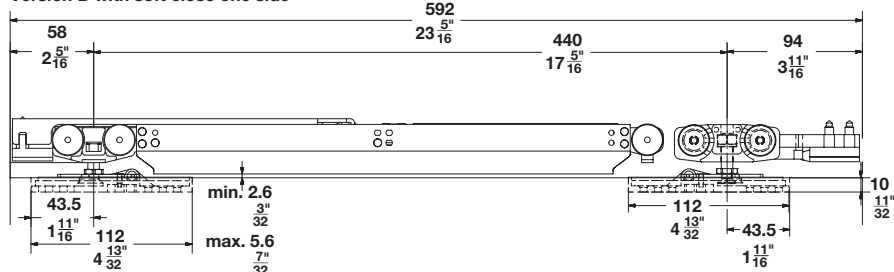
For Classic 40-O - 80-O

Version E with two soft close (one for each side)



For Classic 40-O - 80-O

Version B with soft close one side



For Classic 120-O