

1

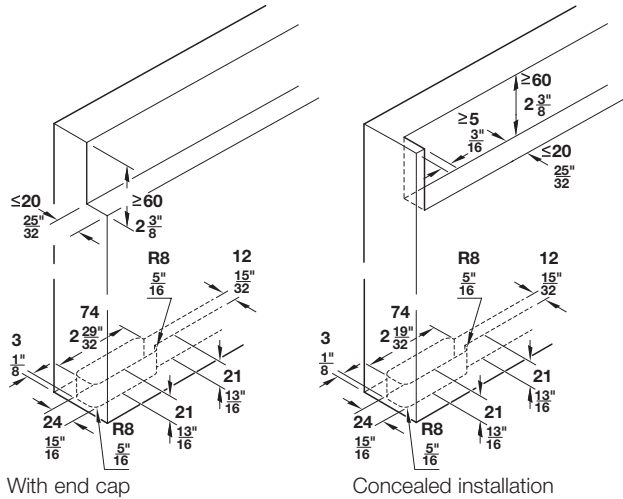
## Slido Design 80-M

- Door weight: up to 80 kg (176 lbs)
- For 1 sliding door, for hard (laminated, PVC, tiles) and soft floors (bottom track must be used for carpet and cork)
- Invisible running equipment integrated in door
- Door width: 800 – 1800 mm (31 1/2" – 70 7/8")
- Wall mounted; floor must be even and level
- Height adjustable: +2 mm (3/32")

### Note

A slight trace of wear may appear on the floor, depending on material. Tile gaps are noticeable when moving the door.

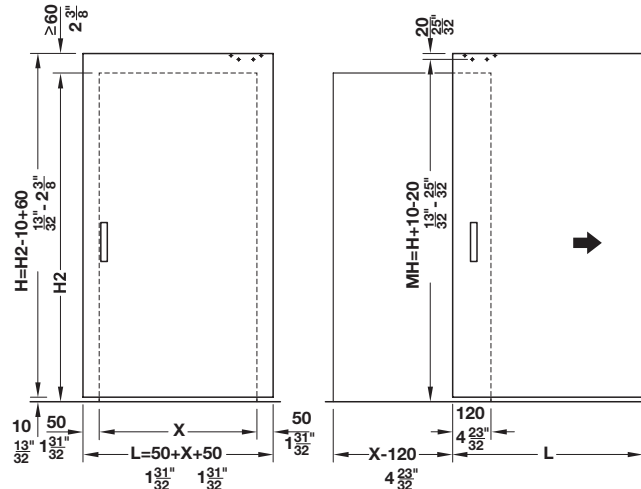
### Cut-out dimensions



### Note

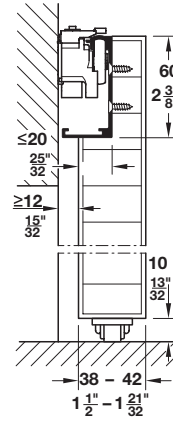
The lateral door overlap is increased by dim. **D** with concealed installation.

### Door installation

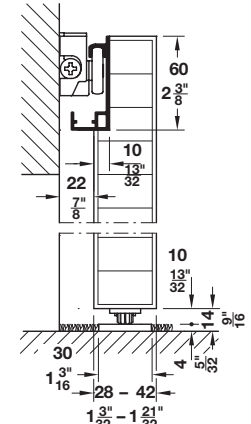


Other mounting options can be found in the installation instructions.

### Installation



Floor guide on hard floors

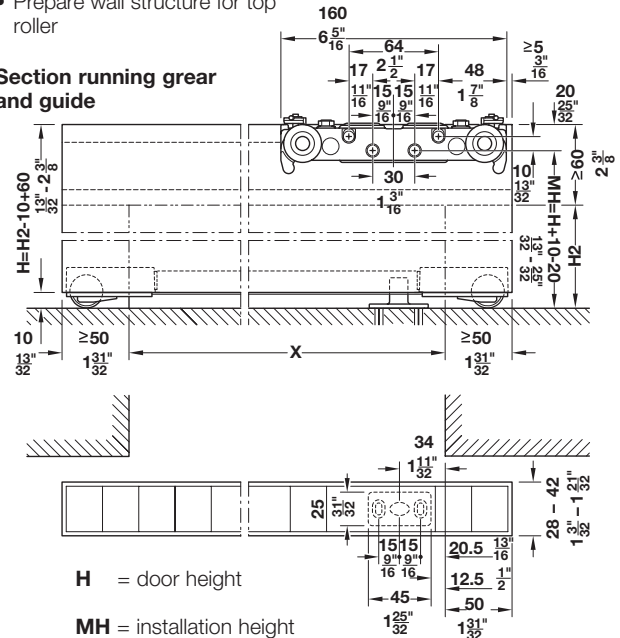


Floor guide on soft floors with running track provided on site

### Installation reference

- Make sure that floor is even and level
- Bottom track is required for soft floors
- Prepare wall structure for top roller

### Section running gear and guide



**H** = door height

**MH** = installation height

**H2** = internal opening height

**X** = internal opening width