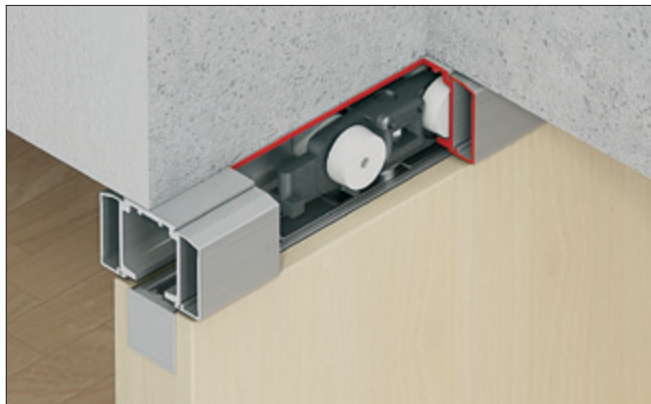


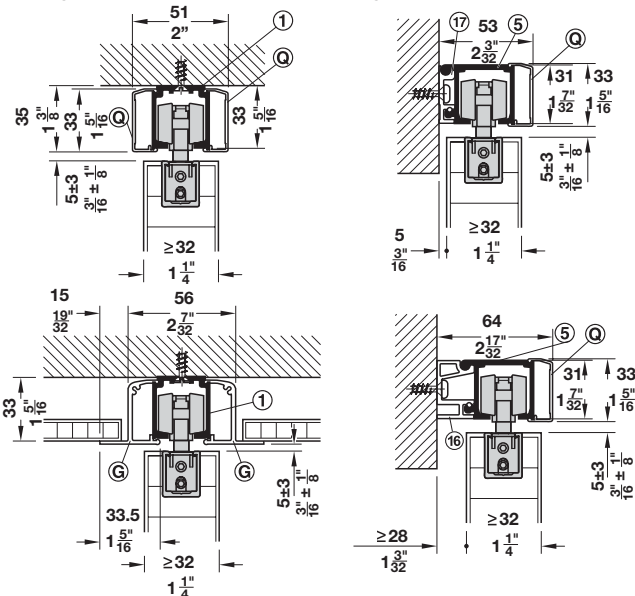
Slido Classic 40-I to 120-I

- Door weight: 40 – 120 kg (88 – 264 lbs.) per door
- For 1 and 2 sliding wood doors
- Door height adjustable ± 3 mm (1/8")
- With integrated suspension
- Door thickness: minimum 32 mm (1 1/4")

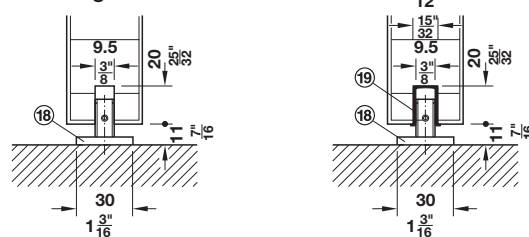


Sliding Door Hardware-Wood Top Hung System

Ceiling installation and wall mounting



Rattle-free floor guide



Without guide channel

16
With guide channel

Slido Classic I Set

- For 1 sliding door without upper track

Soft Close	Version	Door width/weight	40-l 40 kg (88 lbs.)	80-l 80 kg (176 lbs.)	120-l 120 kg (264 lbs.)
Without	A	–	940.43.081	940.82.148	941.25.005
On one side	B	>594 mm (23 3/8") 40 – 80 kg (88 – 176 lbs.) >683 mm (26 7/8") 120 kg (264 lbs.)	940.43.082	940.82.560	941.25.006
On both sides	E	>920 mm (36 1/4") 40 – 80 kg (88 – 176 lbs.) >1098 mm (43 1/2") 120 kg (264 lbs.)	940.43.084	940.82.561	941.25.007

Note

Please order track, fascias and accessories separately.
For bi-parting sliding doors, please order 2 sets per opening.

Sliding door locks	pages 1.357, 1.364-1.368
Flush pulls	pages 1.363, 1.371-1.373
Pull handles	pages 2.10-2.32
Tracks, fascias and accessories	pages 1.8-1.9
Track stopper	page 1.8
Track cleaner	page 1.37

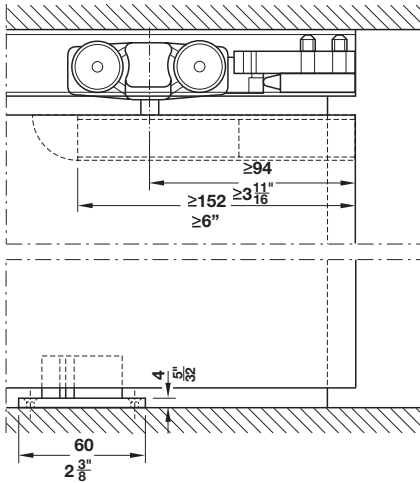
Dimensional data not binding. We reserve the right to alter specifications without notice.

Dimensions in mm
Inches are approximate

AH 1.6

www.hafele.com/us

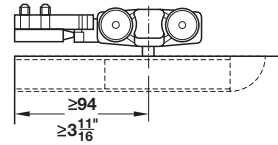
Slido Classic 40-I to 120-I



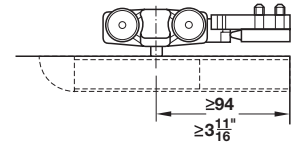
Section guide and trolley hanger

Versions overview

Version A without soft close

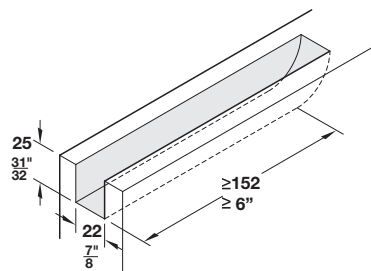
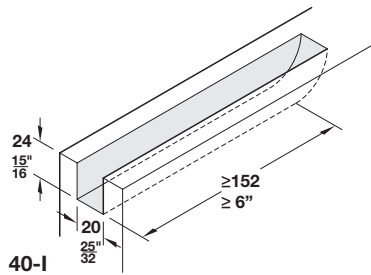


For Classic 40-I - 120-I



1

Routing dimensions for carrier profile



80-I and 120-I

Dimensional data not binding. We reserve the right to alter specifications without notice.

Dimensions in mm
Inches are approximate