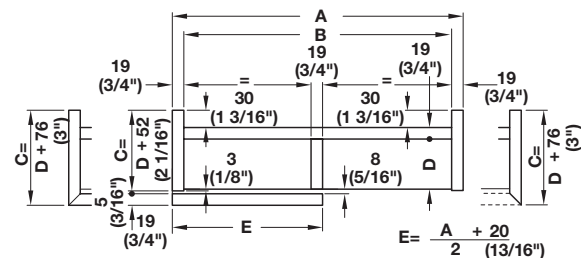
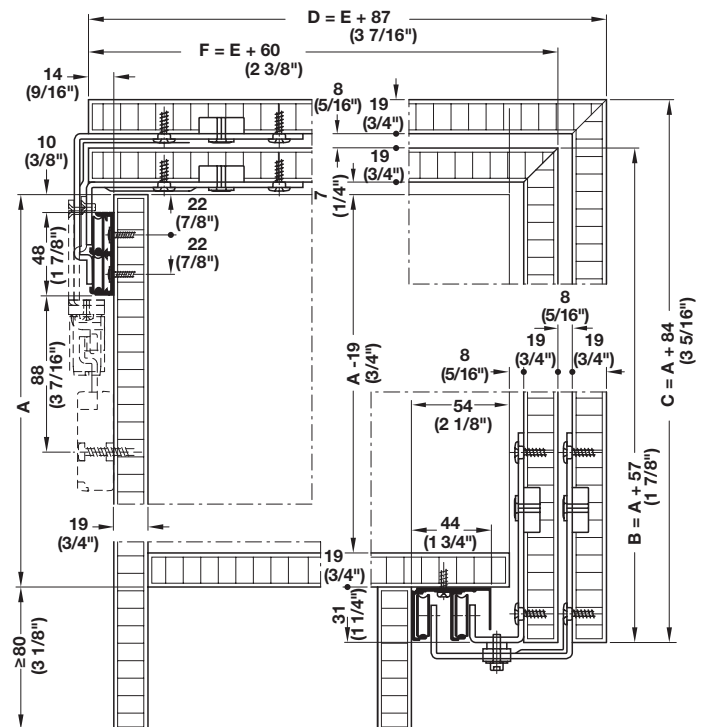


EKU Combino L 40

- Maximum door weight: 40 kg (88 lbs.)
 Maximum door height: 1500 mm (59 1/16")
 Maximum door width: 1500 mm (59 1/16")
 Maximum door depth: 700 mm (27 9/16")
 Door thickness: 19 mm (3/4")
 Eccentric height adjustment +4 / -2 mm (+3/16" / -1/8")
 on running gear
 Eccentric depth adjustment ± 3 mm (1/8") on running gear
- Bottom running gear, 1 roller
 - Guided by running gear, ball bearing mounted, plastic-coated rollers
 - Top and bottom door stopper, bottom stopper with spring
 - Great for home entertainment applications
 - Can be used to hide large flat screen TVs




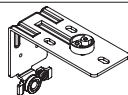
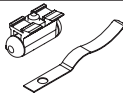
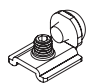
EKU Combino L 40 Set

	Item No.
For 1 sliding door	403.31.000

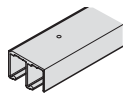

Note

The complete set is always delivered without tracks, please order separately.

Set Components

	Description	Material	Finish/Color	Qty.
	Running gear, for outer door, for screw mounting	Steel	galvanized	2 pcs.
	Guide roller, for outer door, for screw mounting	Plastic	gray	2 pcs.
	Bottom door stopper, with spring	Steel	galvanized	2 pcs.
	Top door stop	Steel	galvanized	2 pcs.

Individual Components

	Description	Material	Finish	Length	Item No.
	Double running track, for screw mounting	Aluminum	silver colored anodized	2.5 m (8' 2 7/16")	403.32.926
				3.5 m (11' 5 13/16")	403.32.936
	Double guide track, without miter cuts, for screw mounting	Aluminum	silver colored anodized	2.5 m (8' 2 7/16")	403.33.926
				3.5 m (11' 5 13/16")	403.33.936