

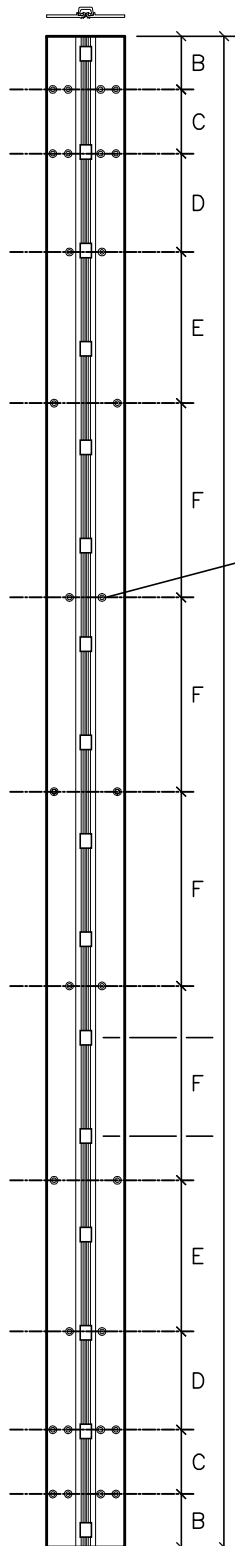


**Trademark
HARDWARE**

148 Horton Drive, Suite B
Monsey, NY 10952

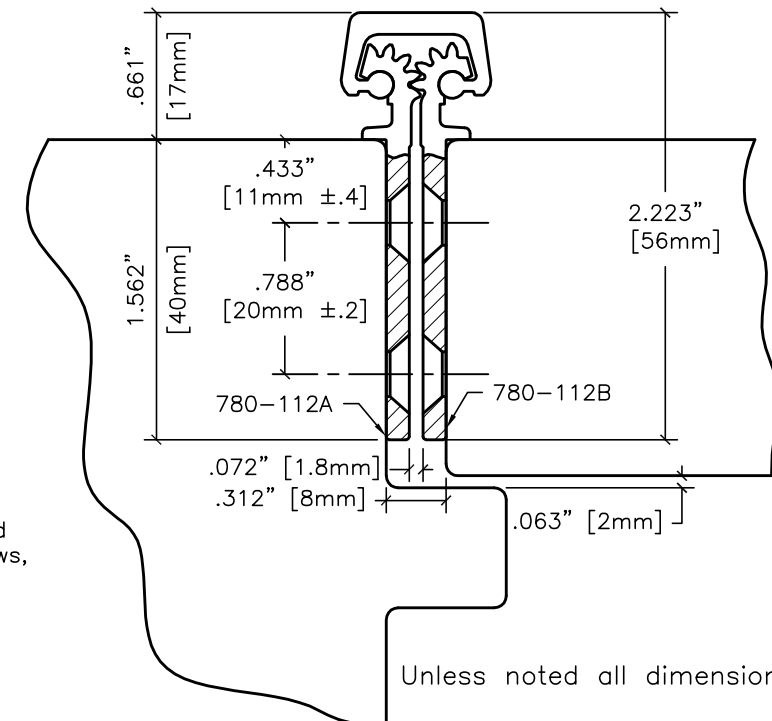
Phone: 845-388-1300
Fax: 845-367-4657

www.TMHardware.com
sales@tmhardware.com



#12 x 82° F.H.
countersunk wood
or machine screws,
(30 places).

16 bearings
spaced equally
@ 5.125"
center to center.

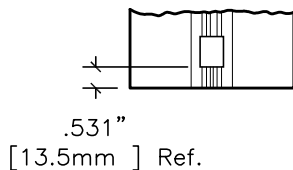


Unless noted all dimensions $\pm .020''$
 $\pm .5\text{mm}$

Vertical Hole Spacing

Non cumulative tolerances on
hole to hole spacing.

	Metric (mm)	Decimal (in.)
A	1998.7 $^{+0.00}_{-0.80}$	78.688 $^{+0.000}_{-0.030}$
B	70.3 $\pm .25$	2.769 $\pm .010$
C	85.0 $\pm .20$	3.346 $\pm .008$
D	130.0 $\pm .20$	5.118 $\pm .008$
E	200.0 $\pm .20$	7.874 $\pm .008$
F	257.0 $\pm .20$	10.118 $\pm .008$



.531"

[13.5mm] Ref.

End of hinge to first
bearing, both ends.



HAGER COMPANIES
HIGHWAY 78 WEST
P.O. BOX 3368
OXFORD, ALABAMA 36203

780-112 79" SD

DATE 10-25-96 REV. 01-15-02 DR. KBJ SCALE None

FILENAME z:\roton\template\standard\780-112.dwg

DRAWING NO. **780112079SD**