



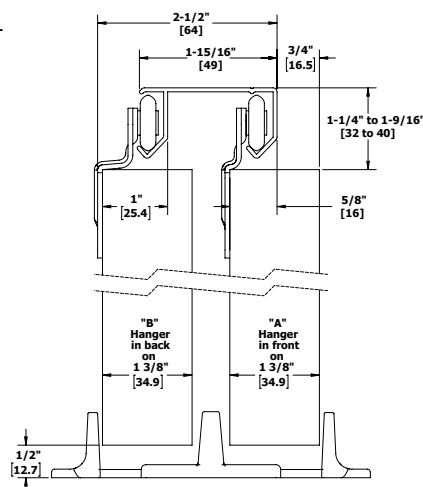
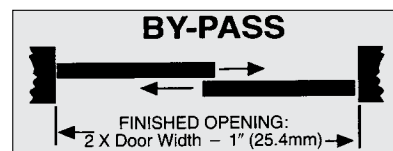
## BY-PASS - 9514 & 9583 PACKAGED BY-PASS SETS

### FEATURES

- Aluminum track with and hardware
- Conforms to ANSI A156.14
- Type: D8742

### SPECIFICATIONS

- For 3/4" - 1-3/8" (19 mm - 35 mm) thick doors
- Up to 60 lbs (27 kg) per door with single wheel hangers 9400 or 9401
- Up to 75 lbs (34 kg) per door with twin wheel hangers 9202 or 9203, sold separately
- Track is extruded aluminum jump-proof style with "V" shaped rails
- Hangers have 7/8" (22 mm) diameter wheels



*Interchanges with Stanley 40-3230, 40-3240, 40-3260, BP60/BP75-02 and Cox 12-200 Series.*

Part Number	Description
9514 Packaged Set (for two doors)	Includes one (1) 9810 track and one (1) 9814 parts bag
9514-48	By-Pass Set - For two 24" (610 mm) doors
9514-60	By-Pass Set - For two 30" (762 mm) doors
9514-72	By-Pass Set - For two 36" (914 mm) doors
9514-96	By-Pass Set - For two 48" (1219 mm) doors
9583 Packaged Set (for three doors)	Includes one (1) 9810 track, two (2) 9400 hangers, four (4) 9401 hangers, two (2) 9353 guides, and three (3) 2610 pulls
9583-96	By-Pass Set - For three 32" (813 mm) doors

Use the chart below to select the correct hanger offset combination for your application.

Side Mount Selection Chart				
Door Thickness	3/4" (19 mm)	1" (25.4 mm)	1-1/8" (29 mm)	1-3/8" (35 mm)
Front Hanger	B	B	A or B	A
Rear Hanger	A	A	Same as front	B
Door Gap	3/4"	1/2"	11/16"	9/16"
			<b>Notes:</b>  Hanger is stamped "A" or "B" for easy identification  For consideration for 9514, 9583, 9614, 9683, 9844 and 9845 By Pass packaged sets.	
	<b>Item #</b>	<b>Description</b>		
Hanger A	9200	Single wheel hanger-offset A		
Hanger B	9201	Single wheel hanger-offset B	<b>Hanger mount selection example:</b>  Door thickness: 1-1/8"                      Door weight: 60 lbs	
Hanger B*	9202	Twin wheel hanger-offset B		
Hanger A*	9203	Twin wheel hanger-offset A		
Hanger A	9400	Micro cam hanger-offset A	<b>Select single, twin or micro cam hanger</b>  Front hanger: 9400                      Rear hanger: 9400	
Hanger B	9401	Micro cam hanger-offset B		

\* For use with doors 60 -75 lbs., sold separately





## BY-PASS - 9514 & 9583 PACKAGED SET COMPONENTS



### 9810

#### Aluminum Track

Materials: Extruded aluminum  
Gauge: 0.050" (1.3 mm) thick  
Track: 1" x 2" (25 mm x 51 mm)  
Lengths: 48" (1219 mm) to 144" (3658 mm)

Notes:

- For doors up to 75 lbs (34 kg)
- One piece track



### 9353

#### Adjustable Door Guide

Materials: High density polyethylene  
Notes:

- Adjustable guide from 3/4" (19 mm) to 1-3/8" (35 mm)
- Included with 9841 parts bag



### 9814

#### Parts Bag

Includes two (2) 9400 hangers, two (2) 9401 hangers, two (2) 2610-US3 pulls, and one (1) 9353 guide



### 9841

#### Optional Parts Bag

- Includes four (4) 9401 hangers, two (2) 9865 pulls, one (1) 9351 guide
- For use with 1" - 1-1/8" thick doors



### 9400\* | 9401\*\*

#### Micro Adjust Hanger

Materials: Zinc plated steel with molded Celcon wheels  
Gauge: 0.075" (2 mm)  
Wheel: 7/8" (22 mm) diameter  
Notes:

- Side mounted with precise cam adjustment
- For use on doors weighting up to 60 lbs (27 kg)
- For use with 9810, 9820, and 9840 track
- Hanger is stamped "A" or "B" for easy identification
- \* 9400 is A offset of 3/8" (9.5 mm)
- \*\* 9401 is B offset of 11/16" (17.5 mm)



### 9865

#### Flush Cup Pull

Overall Diameter: 1-31/32" (50 mm)  
Finger Pull Diameter: 1-19/32" (41 mm)  
Depth: 11/32" (9 mm)  
Projection: 5/64" (2 mm)  
Materials: Tan color ABS plastic

Notes:

- Built-in prong design eliminates the need for screws or brads



### 9351

#### Guide

Materials: High density polyethylene  
Guide: 4-9/16" x 1" x 11-3/16" (116 mm x 25 mm x 46 mm)  
Notes:

- One piece fixed guide for 1-3/8" (35 mm) doors
- Included with 9841 parts bag



### 2610

#### Flush Cup Finger Pull

Overall Diameter: 31/32" (25 mm)  
Finger Pull Diameter: 3/4" (19 mm)  
Depth: 5/16" (8 mm)  
Projection: 1/32" (.8 mm)  
Materials: Solid brass  
Finishes: US3, US4, US5, US10A, US15, US15A, US26, US26D, ABA

Notes:

- Built-in prong design eliminates the need for screws or brads

## Optional Components

9200   9201	Hanger
9202   9203	Hanger
2630	Pull
9909	Adjustable Guide
9354	3/4" Riser
9815	Bumper Stop
9880	Door Stop

For optional components see pages 59-63