



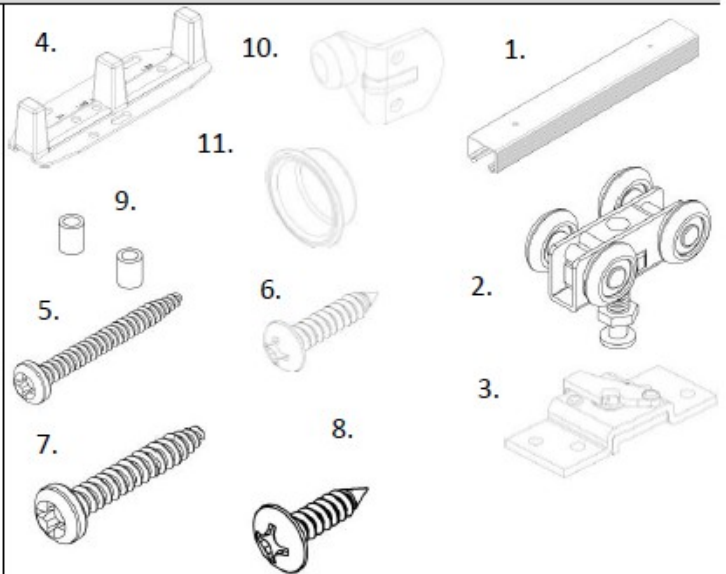
**TRADEMARK
HARDWARE**

WORLD OF QUALITY HARDWARE

HAGER 9611, 9612 SETS

INSTALLATION GUIDE

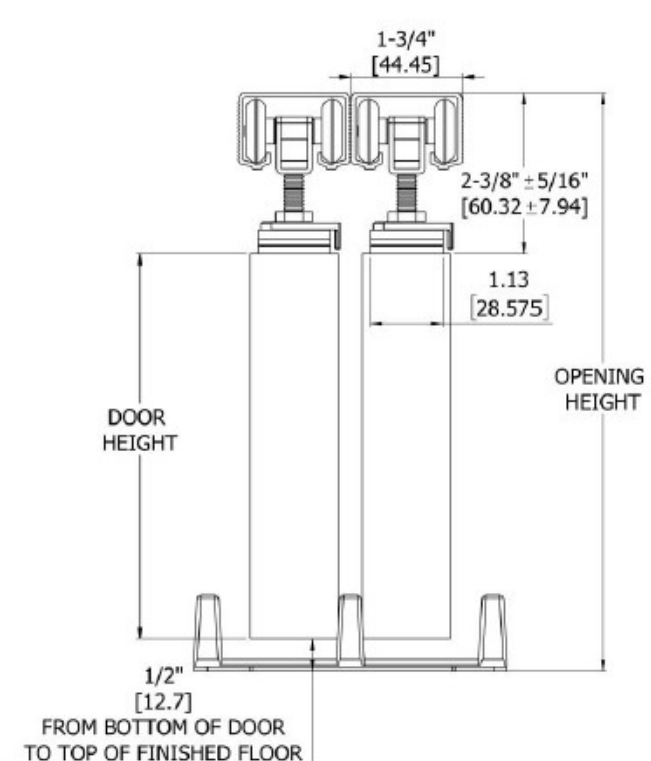
| CONTENTS | 9611 | 9612 |
|------------------------------|----------|----------|
| 1. TRACK (9821) | 2 | 2 |
| 2. CARRIER | 4 (9824) | 4 (9825) |
| 3. QUICK RELEASE PLATE(9610) | 4 | 4 |
| 4. FLOOR GUIDE (9115) | 1 | 1 |
| 5. #8 X 1-1/2" PPHS | 5 | 5 |
| 6. #8 X 3/4" PPHS | 2 | 2 |
| 7. #8 X 1" PPHS | 8 | 8 |
| 8. #8 X 5/8" TPHS | 16 | 16 |
| 9. SPACERERS | 2 | 2 |
| 10. DOORSTOP (9880) | 1 | 1 |
| (sold separately) | | |
| 11. PULL | 2 | 2 |
| (Sold separately) | | |



1 PREPARE OPENING

OPENING HEIGHT MAX = DOOR HEIGHT + 3-3/16"

OPENING HEIGHT MIN = DOOR HEIGHT + 2-9/16"



www.tmhardware.com



845-388-1300



845-388-1388



sales@tmhardware.com



**TRADEMARK
HARDWARE**

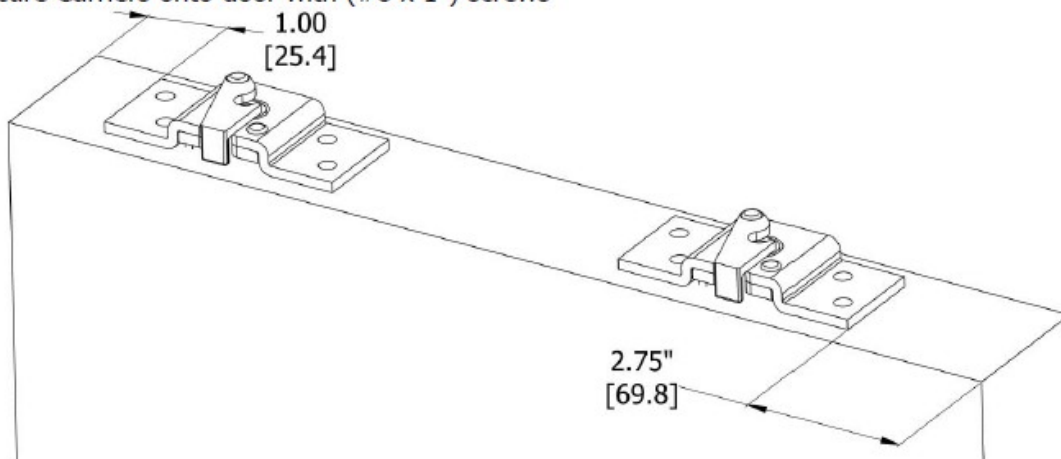
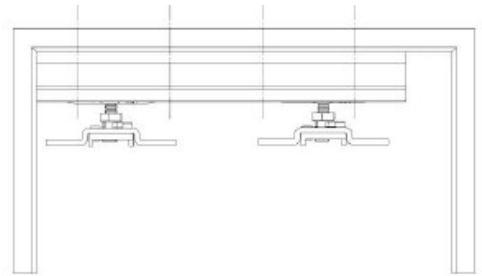
WORLD OF QUALITY HARDWARE

HAGER 9611, 9612 SETS

INSTALLATION GUIDE

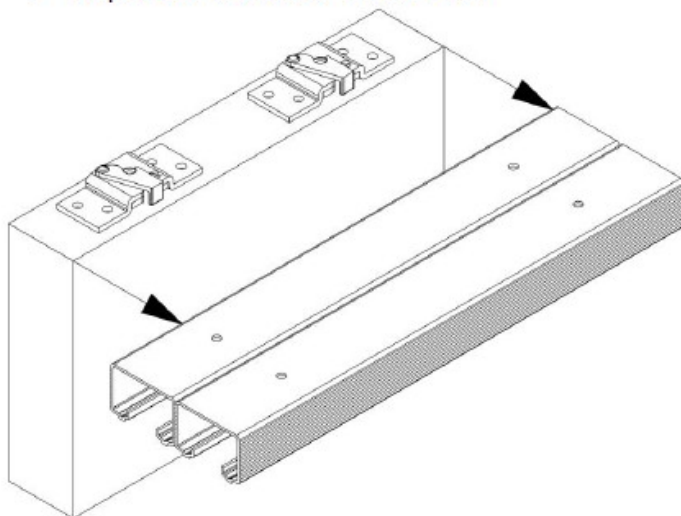
2 INSTALL TRACK AND HANGERS

- Center tracks in opening, flush for 1-3/8" doors, or with spacer kit for 1-3/4" doors. Secure with (#8 x 1") screws
- Leave a 1" gap between right end of track and door frame to allow for carrier removal
- Center quick release plates on door thickness
- Mount left plate edge 1" from near left door edge
- Mount right plate edge 2-3/4" from near right door edge
- Secure Carriers onto door with (#8 x 1") screws



3 HANG DOORS

- Open quick release latches on brackets
- Slide door onto carrier and close hatch
- Repeat for front door on front rail



4 ADJUST AND FINISH

- Adjust carriers so door is square with frame
- Install door guides in center of opening, where doors overlap using (#8 X 1-1/2") screws
- Drill appropriate dimensioned hole to mount door pull (optional)
- Install stops (optional)

