



BY-PASS - 9611 & 9612 PACKAGED SETS

FEATURES

- Heavy duty aluminum box double track and hardware
- Conforms to ANSI A156.14
- Type: D8731, D8751

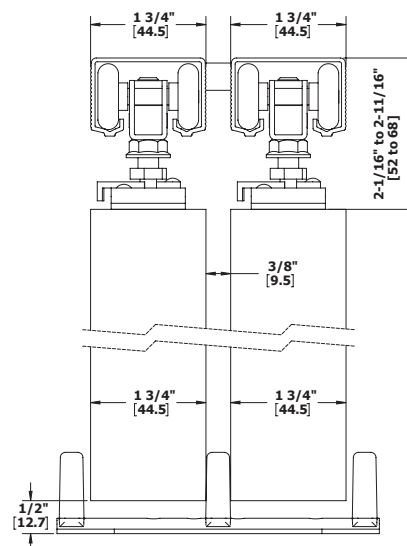
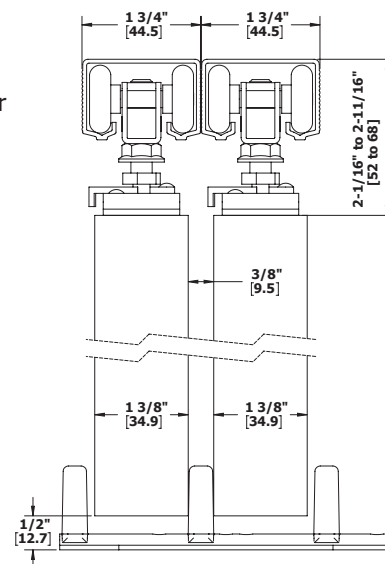
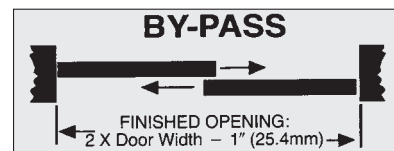
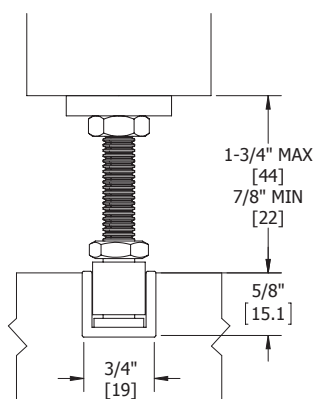
SPECIFICATIONS

- For doors 1-3/8" (35 mm) thick doors (top figure)
- For doors 1-3/4" (45 mm) thick with tracks spaced 3/8" (10 mm) apart using 9573 (bottom figure)
- 9611 Packaged Sets for doors weighing up to 150 lbs (68 kg) per door
- 9612 Packaged Sets for doors weighing up to 250 lbs (113 kg) per door
- Quick release hangers allow easy door hanging and removal
- Hangers have 1" (25 mm) diameter wheels
- Universal extruded aluminum track interchanges with Stanley and Johnson hangers and track

Part Number	Description
9611 Packaged Set Includes two (2) 9821 tracks and one (1) 9892 parts bag: four (4) 9824 hangers, one (1) 9909 guide, and one (1) 9573 spacer For doors up to 150 lbs (68 kg) per door	
9611-60	By-Pass Set - For two 30" (762 mm) doors
9611-72	By-Pass Set - For two 36" (914 mm) doors
9611-96	By-Pass Set - For two 48" (1219 mm) doors
9612 Series Set Includes two (2) 9821 tracks and one (1) 9893 parts bag: four (4) 9825 hangers, one (1) 9909 guide, and one (1) 9573 spacer For doors up to 250 lbs (113 kg) per door	
9612-60	By-Pass Set - For two 30" (762 mm) door
9612-72	By-Pass Set - For two 36" (914 mm) door
9612-96	By-Pass Set - For two 48" (1219 mm) door

Optional Bottom Track
9121 - 9122

Installation note: Clearance between door bottom and top of 9122 track must be 7/8" (22 mm) minimum to 1-3/4" (44 mm) maximum.



Interchanges with Stanley 125/250 Series
and Johnson 100 Series





BY-PASS - 9611 & 9612 TRACK COMPONENTS



9821

Aluminum Box Track

Materials: Extruded aluminum
 Gauge: 0.06" (2 mm) thick
 Track: 1-5/8" x 1-1/16"
 (41 mm x 27 mm)
 Lengths: 59" (1499 mm) to 144"
 (3658 mm)
 Notes:

- Jump proof twin channel design
- Two-piece required for by-pass



9573

Celcon Plastic Spacer Kit

Materials: Celcon plastic
 Notes:

- Includes screws
- Properly spaces two single tracks for 1-3/4" (44 mm) doors



9892

Parts Bag

Includes four (4) 9824 4-wheel hangers with quick release top mount plate, one (1) 9909 guide, and one (1) 9573 spacer kit
 Note: Up to 150 lbs (68 kg) per door



9893

Parts Bag

Includes four (4) 9825 4-wheel ball bearing hangers with quick release top mount plate, one (1) 9909 guide, and one (1) 9573 spacer kit
 Note: Up to 250 lbs per door



9824

4 Wheel Hanger with Quick Release Top Mount Plate

Materials: Zinc plated steel
 Wheels: Self aligning to allow consistent contact with track
 Wheel: 1" (25 mm) diameter
 Notes:

- Pre-lubricated Celcon wheels
- Up to 150 lbs (68kg) per door
- For use with 9821 track
- Quick release feature allows easy door hanging and removal



9825

4 Wheel Ball Bearing Hanger with Quick Release Top Mount Plate

Materials: Zinc plated steel
 Wheels: Self aligning to allow consistent contact with track with steel ball bearings
 Wheel: 1" (25 mm) diameter
 Notes:

- Pre-lubricated Celcon wheels
- Up to 250 lbs (113 kg) per door
- For use with 9821 track
- Quick release feature allows easy door hanging and removal



9909

Adjustable Guide

Materials: Steel with bright zinc finish
 Posts: Molded Celcon/Nylon
 Gauge: 0.060" (1.5 mm)
 Guide: 4-7/8" x 1-5/8" x 1-3/16"
 (124 mm x 41 mm x 30 mm)
 Notes: For doors 3/4" to 1-3/4"
 (19 mm to 44 mm) thick and up to 275 lbs (125 kg)

Optional Components

9709	Fascia
2610	Pull
2630	Pull
9865	Pull
9121	Bottom Door Guide
9122	Bottom Guide Channel
9351	Adjustable Guide
9353	Adjustable Guide
9354	3/4" Riser
9815	Bumper Stop
9880	Door Stop

For optional components see pages 59-63