



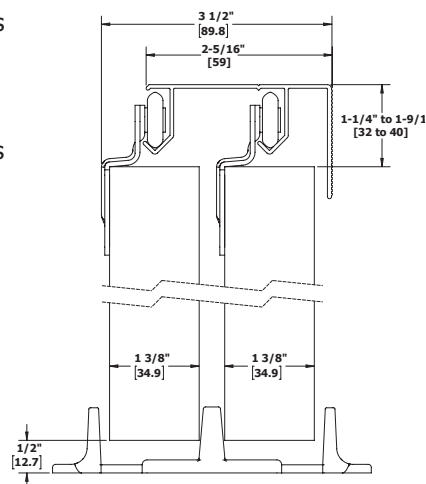
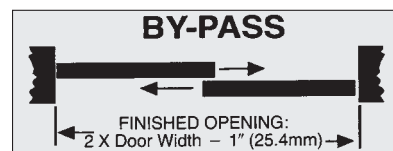
BY-PASS - 9614 & 9683 PACKAGED SETS

FEATURES

- Aluminum track with 1-3/4" (44 mm) fascia and hardware
- Conforms to ANSI A156.14
- Type: D8742

SPECIFICATIONS

- For doors up to 1-3/8" (35 mm) thick
- Up to 60 lbs (27 kg) per door with single wheel 9201 or 9401 hangers
- Up to 75 lbs (34 kg) per door with twin wheel 9202 hangers
- Track is extruded aluminum jump-proof style with integral 1-3/4" (44 mm) fascia
- Hangers have one or two side mounted 7/8" (22 mm) diameter wheels
- Uses all B offset hangers
- Grooved fascia, ideal for painting



Interchanges with Stanley 8139 track, BP75-06, 8400 Series sets, 40-3340 and Cox 12-400 Series.

Part Number	Description
9614 Packaged Set (for two doors)	Includes one (1) 9820 track and one (1) 9540 parts bag: (4) 9401 hangers, two (2) 2610-US3 pulls, one (1) 9351 floor guide
9614-48	By-Pass Set - For two 24" (610 mm) door hangers, two (2) 2610 - US3
9614-60	By-Pass Set - For two 30" (762 mm) door pulls, one (1) 9351 floor guide
9614-72	By-Pass Set - For two 36" (914 mm) doors
9683 Series Set (for three doors)	Includes one (1) 9820 track and six (6) 9401 hangers, two (2) 9351 guides, and three (3) 2610 pulls
9683-96	By-Pass Set - For three 32" (813 mm) doors

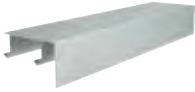
Use the chart below to select the correct hanger offset combination for your application.

Side Mount Selection Chart				
Door Thickness	3/4" (19 mm)	1" (25.4 mm)	1-1/8" (29 mm)	1-3/8" (35 mm)
Front Hanger	B	B	A or B	A
Rear Hanger	A	A	Same as front	B
Door Gap	3/4"	1/2"	11/16"	9/16"
	Item #	Description	Notes: Hanger is stamped "A" or "B" for easy identification For consideration for 9514, 9583, 9614, 9683, 9844 and 9845 By-Pass packaged sets.	
Hanger A	9200	Single wheel hanger-offset A		
Hanger B	9201	Single wheel hanger-offset B	Hanger mount selection example: Door thickness: 1-1/8" Door weight: 60 lbs Select single, twin or micro cam hanger Front hanger: 9400 Rear hanger: 9400	
Hanger B	9202	Twin wheel hanger-offset B		
Hanger A	9203	Twin wheel hanger-offset A		
Hanger A	9400	Micro cam hanger-offset A		
Hanger B	9401	Micro cam hanger-offset B		





BY-PASS - 9614 & 9683 TRACK COMPONENTS



9820 Aluminum Track with 1-3/4\"/>

Materials: Extruded aluminum
Gauge: 0.050" (1.3 mm)
Track: 1-3/4" x 3" (44 mm x 76 mm)
Lengths: 48" (1219 mm) to 144" (3658 mm)

- Notes:
- For doors up to 75 lbs (34 kg)
 - For use on doors up to 1-3/8" (35 mm)
 - For use with 7/8" (22 mm) diameter hanger wheels
 - One piece track with built-in grooved fascia



9351 Guide

Materials: High density polyethylene
Guide: 4-9/16" x 1" x 11-3/16" (116 mm x 25 mm x 46 mm)
Notes: One piece fixed guide for 1-3/8" (35 mm) doors

Optional Part Bags

9544 Parts Bag

Includes four (4) 9202 hangers, two (2) 2630-US3 pulls, and one (1) 9351 guide



9540 Parts Bag

Includes four (4) 9401 hangers, two (2) 2610-US3 pulls, and one (1) 9351 guide



9841 Parts Bag

Includes four (4) 9401 hangers, two (2) 9865 pulls, and one (1) 9351 guide



9401 "B" Offset Hanger Micro Adjust Hanger

Materials: Zinc plated steel with molded Celcon wheels
Gauge: 0.075" (2 mm)
Wheel: 7/8" (22 mm) diameter
Notes:

- Side mounted with precise cam adjustment
- For use on doors weighting up to 60 lbs (27 kg)
- For use with 9810, 9820, and 9840 track



9842 Parts Bag

Includes four (4) 9401 hangers, two (2) 2630-US3 pulls, and one (1) 9351 guide



9843 Parts Bag

Includes four (4) 9202 hangers, two (2) 9865 pulls, and one (1) 9351 guide



2610 Flush Cup Finger Pull

Overall Diameter: 31/32" (25 mm)
Finger Pull Diameter: 3/4" (19 mm)
Depth: 5/16" (8 mm)
Projection: 1/32" (.8 mm)
Materials: Solid brass
Finishes: US3
Notes: Built-in prong design eliminates the need for screws or brads

Optional Components

9200 9201	Hanger
9202 9203	Hanger
2630	Pull
9865	Pull
9909	Adjustable Guide
9353	Adjustable Guide
9354	3/4" Riser
9815	Bumper Stop
9880	Door Stop

For optional components see pages 59-63