



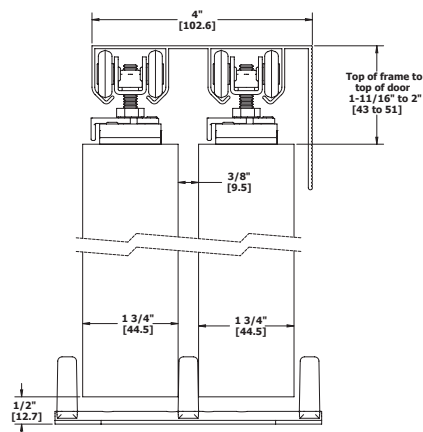
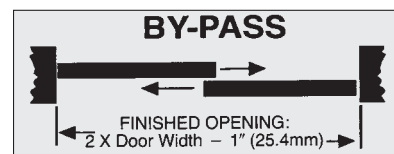
BY-PASS - 9673 & 9674 PACKAGED SETS

FEATURES

- Heavy duty aluminum track with 2-5/8" (66 mm) Built-In Grooved Fascia and Hardware
- Conforms to ANSI A156.14
- Type: D8751, D8752

SPECIFICATIONS

- For doors 1-3/8" - 1-3/4" (35 mm - 44 mm) thick
- 9673 packaged sets for up to 125 lbs (57 kg) per door
- 9674 packaged sets for up to 150 lbs (68 kg) per door
- Track is extruded aluminum jump-proof style with "V" shaped rails and integral 2-5/8" (66 mm) fascia
- Hangers have four (4) 7/8" (22 mm) diameter wheels
- Integral 2-5/8" grooved fascia
- Grooved fascia, ideal for painting



Interchanges with Stanley S1700F Series/BP150F; Johnson 134F/138F; and Lawrence F581 track, HDF520 Series sets.

Part Number	Description
9673 Packaged Set	
Includes one (1) 9603 track and one (1) 9679 parts bag: four (4) 9605 hangers, four (4) 9610 plates, and one (1) 9909 guide	
For doors up to 125 lbs (57 kg)	
9673-48	By-Pass Set - For two 24" (610 mm) doors
9673-60	By-Pass Set - For two 30" (762 mm) doors
9673-72	By-Pass Set - For two 36" (914 mm) doors
9673-96	By-Pass Set - For two 48" (1219 mm) doors
9674 Series Set	
Includes one (1) 9603 Packaged Set track and one (1) 9680 parts bag: four (4) 9606 hangers, four (4) 9610 plates, and one (1) 9909 guide	
For doors up to 150 lbs (68 kg)	
9674-48	By-Pass Set - For two 24" (610 mm) door
9674-60	By-Pass Set - For two 30" (762 mm) door
9674-72	By-Pass Set - For two 36" (914 mm) door
9674-96	By-Pass Set - For two 48" (1219 mm) door





BY-PASS - 9673 & 9674 TRACK COMPONENTS



9603

Heavy Duty Aluminum Double Box Track

Materials: Extruded aluminum
Gauge: 0.050" (1.3 mm)
Track: 1-1/16" x 4" (27 mm x 102 mm)
Lengths: 48" (1219 mm) to 144" (3658 mm)

Notes:

- Grooved fascia for painting
- Jump proof double twin channel design
- One piece track with built-in grooved fascia



9909

Adjustable Guide

Materials: Steel with bright zinc finish
Posts: Molded Celcon/Nylon
Gauge: 0.060" (1.5 mm)
Guide: 4-7/8" x 1-5/8" x 1-3/16" (124 mm x 41 mm x 30 mm)
Notes: For doors 3/4" to 1-3/4" (19 mm to 44 mm) thick and up to 275 lbs (125 kg)



9679

Parts Bag

For 125 lbs (57 kg) per door - Includes four (4) 9605 hangers with quick release top mount plate, four (4) 9610 plates, and one (1) 9909 guide



9680

Parts Bag

For 150 lbs (68 kg) doors - Includes four (4) 9606 ball bearing hangers, four (4) 9610 plates, and one (1) 9909 guide
Note: Up to 125 lbs (57 kg) per door



9605

4-Wheel Hanger

For 125 lbs (57 kg) doors
Materials: Steel with brass-tone dichromate finish
Wheel: 7/8" (22 mm) diameter
Notes:

- Wheels are self aligning to allow consistent contact with track
- Pre-lubricated Celcon wheels
- Up to 125 lbs (57 kg) per door
- Use in conjunction with 9601, 9602 or 9603 track



9606

4-Wheel Ball Bearing Hanger

For 150 lbs (68 kg) doors
Materials: Steel with brass-tone dichromate finish
Wheel: 7/8" (22 mm) diameter
Notes:

- Wheels are self aligning to allow consistent contact with track
- Pre-lubricated Celcon wheels mounted on steel ball bearing shafts
- For doors up to 150 lbs (68 kg)
- Used in conjunction with 9607, 9608 or 9610 top door plate and 9599, 9601 or 9602 track



9610

Replacement Top Mount Plate

Materials: Bright zinc plated steel
Gauge: 1/8" (3 mm)
Size: 1-3/8" (35 mm) x 2-13/16" (72 mm)
Notes: Replacement for four wheel hangers 9605, 9606, 9575, 9824, 9825 and 9827

Optional Components

2610	Pull
2630	Pull
9865	Pull
9610	Top Mount Plate
9351	Adjustable Guide
9353	Adjustable Guide
9354	3/4" Riser
9815	Bumper Stop
9880	Door Stop

For optional components see pages 59-63