



## BI-FOLD - 9860 & 9861 BI-FOLD SETS

### FEATURES

- Heavy duty aluminum box track and hardware
- Conforms to ANSI A156.14
- Type: D8621, D8641, D8651, D8661

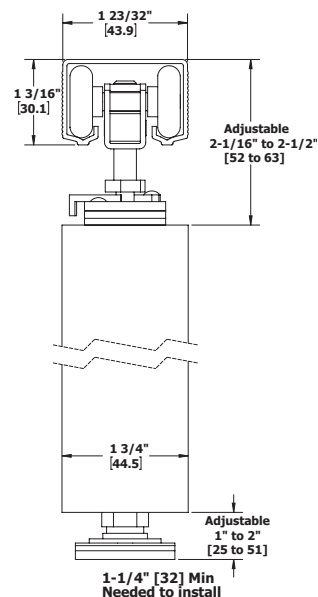
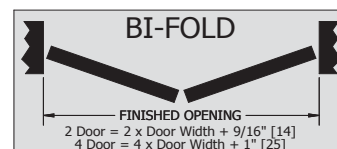
### SPECIFICATIONS

- For doors 1-3/8" - 1-3/4" (35 mm - 44 mm) thick
- Up to 125 lbs (57 kg) per panel bi-fold
- Up to 75 lbs (34 kg) per panel multi-fold
- Quick release hangers allow easy door hanging and removal
- Universal extruded aluminum track interchanges with Stanley & Johnson track and hangers
- Hangers have 1" (25 mm) diameter wheels

Part Number	Description
9860 Bi-Fold Set - For two doors Includes one (1) 9821 track, one (1) 9894 parts bag, and three (3) 1741 3.5" x 3.5" US2D hinges	
9860-30	Bi-Fold Set - 30" (762 mm) opening for two doors
9860-36	Bi-Fold Set - 36" (914 mm) opening for two doors
9860-48	Bi-Fold Set - 48" (1219 mm) opening for two doors
9861 Bi-Fold Set - For four doors Includes one (1) 9821 track, two (2) 9894 parts bags, and six (6) 1741 3.5" x 3.5" US2D hinges	
9861-48	Bi-Fold Set - 48" (1219 mm) opening for four doors
9861-60	Bi-Fold Set - 60" (1524 mm) opening for four doors
9861-72	Bi-Fold Set - 72" (1829 mm) opening for four doors
9861-96	Bi-Fold Set - 96" (2438 mm) opening for four doors

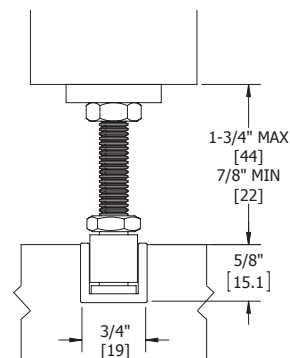
### TRACKS - 0.06" (1.5 mm) thick aluminum

Part Number	Description
Tracks for use with 9800 Series	
9821-59	59" (1499 mm) Heavy Duty Aluminum Box Track
9821-71	71" (1803 mm) Heavy Duty Aluminum Box Track
9821-96	96" (2438 mm) Heavy Duty Aluminum Box Track
9821-144	144" (3658 mm) Heavy Duty Aluminum Box Track



Interchanges with Stanley 125/250 Series and Johnson 100 Series.

### Optional Bottom Track 9121 - 9122



Installation note: Clearance between door bottom and top of 9122 track must be 7/8" (22 mm) minimum to 1-3/4" (44 mm) maximum.





## BI-FOLD - 9860 & 9861 TRACK COMPONENTS



### 9821

#### Aluminum Box Track

Materials: Extruded aluminum  
 Gauge: 0.06" (1.55 mm)  
 Track: 1-5/8" x 1-1/16"  
 (41 x 27 mm)  
 Lengths: 59" (1499 mm) to 144" (3658 mm)  
 Notes:
 

- For doors up to 250 lbs (113 kg)
- Jump proof twin channel design



### 9828

#### Bi-Fold Pivot Set

Materials: Zinc plated steel  
 Notes:
 

- For doors up to 125 lbs (57 kg)
- Track pivot bearing mounts up inside track - no track cutting required
- Bottom pivot socket has ball bearing raceway
- Top and bottom pivots require 1/2" (13 mm) diameter and 1-3/4" (44 mm) deep holes
- For use with 9801 and 9821 track



### 9894

#### Parts Bag

Includes one (1) 9825 4-wheel ball bearing hanger with quick release top mount plate, one (1) 9559 aligner, one (1) 9828 bi-fold pivot set with one (1) 9815 bumper stop



### 9815

#### Bumper Stop

Materials: Zinc plated steel and rubber  
 Notes:
 

- Fits all Hager track styles except 9101
- Screws onto track
- Included in bi-fold sets 9570 and 9890



### 9825

#### Four Wheel Ball Bearing Quick Release Hanger

Materials: Zinc plated steel  
 Wheels: Self aligning to allow consistent contact with track  
 Wheel: 1" (25 mm) diameter  
 Notes:
 

- For doors up to 125 lbs (57 kg) for bi-fold applications
- Pre-lubricated Celcon wheels
- For use with 9821 track
- Quick release feature allows easy door hanging and removal



### 9559

#### Aligner

Materials: Steel with brass-tone dichromate finish  
 Notes:
 

- Keeps lead doors aligned when closed
- Use one on each lead door

### Optional Components

1741	Full Mortise Hinge
9220	Bi-Fold Hinge
9121	Adj. Bottom Door Guide
9122	Bottom Guide Channel
9558	Wood Knob

For optional components see pages 59-63