



**TRADEMARK
HARDWARE**

WORLD OF QUALITY HARDWARE



TRICOM — FULL MORTISE
TEMPLATE HINGES
ELECTRIC THROUGH WIRE
AND MONITOR TYPE ETM
SIZES: 5 x 4, 5 x 4 1/2, 5 x 5

Template No. T529

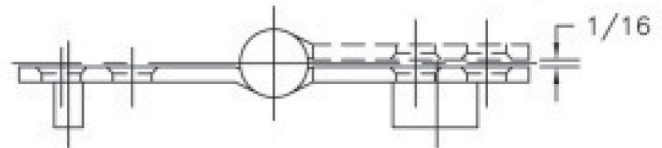
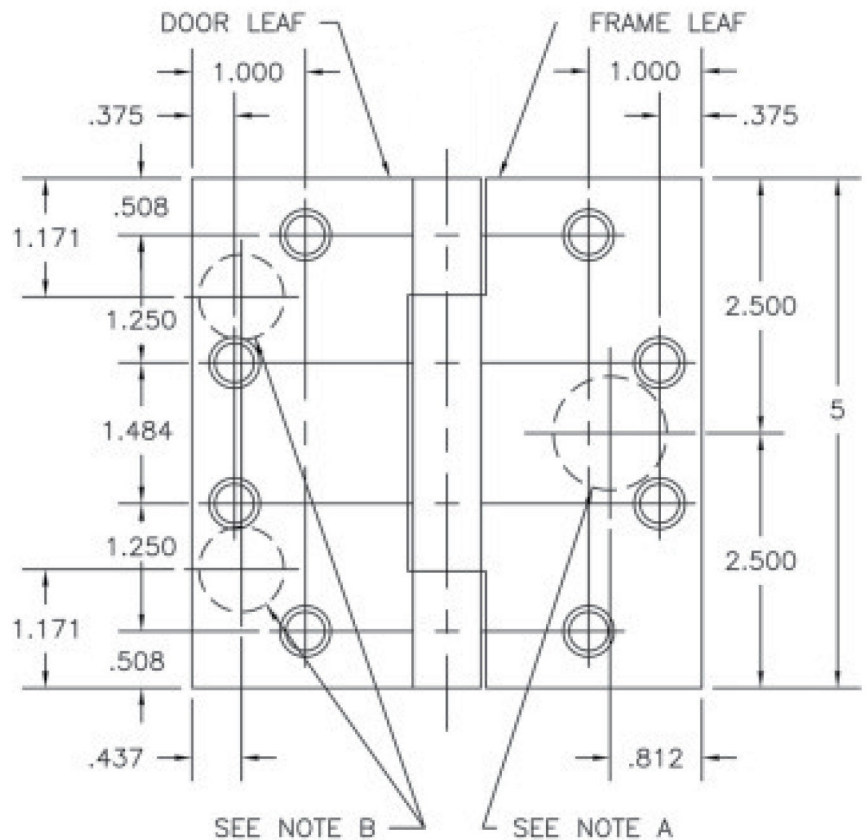
No.	REVISION	BY	DATE
1	ECO CT05035	RAM	8-15-05

ETM MAXIMUM ELECTRICAL RATING SWITCH	
VOLTS	30V DC
AMPERES	.500A
CONTACT THROUGH WIRE	
VOLTS	48V DC
AMPERES	3.5A CONTINUOUS CURRENT 16.0A CURRENT INRUSH (300 MILLISECONDS)

DRILLING INSTRUCTIONS

NOTE A:
DRILL AND DEBURR ϕ 1"
HOLE IN FRAME REINFORCEMENT
FOR THROUGH WIRES.

- NOTE B:
1. NON-HANDED INSTALLATION—
DRILL AND DEBURR TWO
(2) 3/4" HOLES IN DOOR
REINFORCEMENT PLATE
FOR THROUGH WIRES.
 2. RIGHT HAND INSTALLATION—
DRILL AND DEBURR ϕ 3/4"
HOLE FOR THROUGH WIRES
IN DOOR REINFORCEMENT
PLATE ON BOTTOM LEFT.
 3. LEFT HAND INSTALLATION—
DRILL AND DEBURR ϕ 3/4"
HOLE FOR THROUGH WIRES
IN DOOR REINFORCEMENT
PLATE ON UPPER RIGHT.



SKU: HAB750

