



**TRADEMARK  
HARDWARE**

WORLD OF QUALITY HARDWARE

**TRICON - FULL MORTISE  
TEMPLATE HINGES ELETRIC  
THROUGH WIRE TYPE ETW**

SIZES: 4 1/2 x 4, 4 1/2 x 4 1/2

Template No. T522

Rev. '96



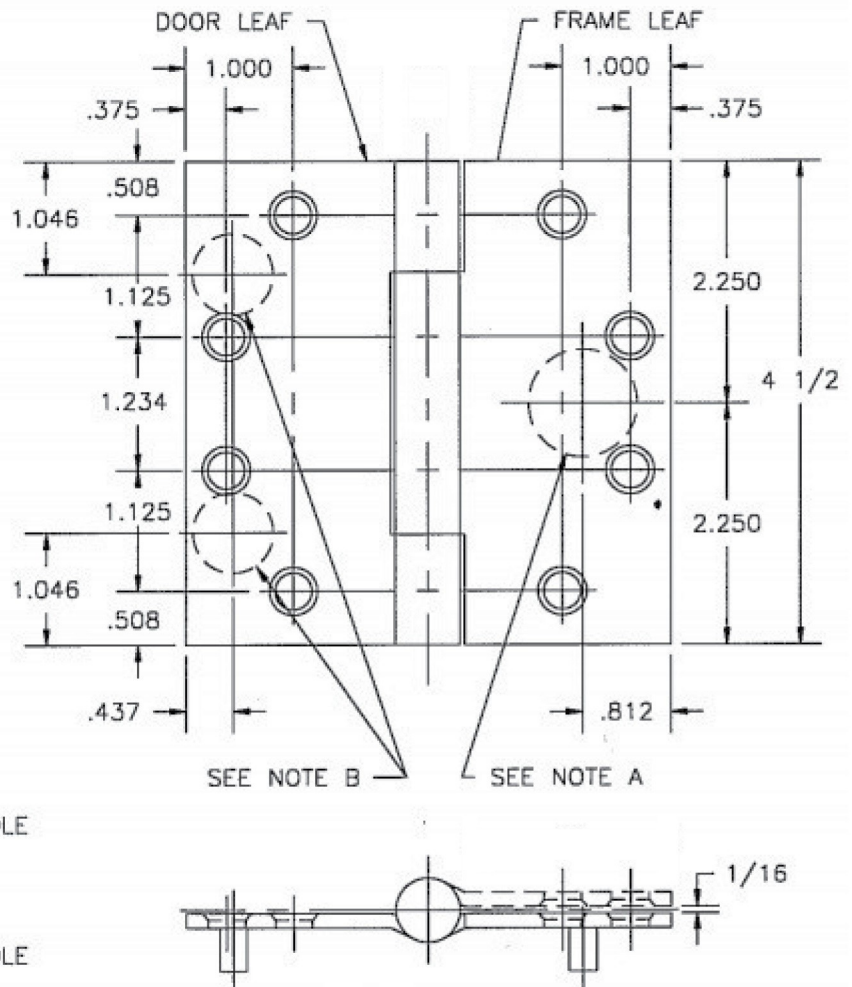
**ETW MAXIMUM  
ELECTRICAL RATING**  
**CONTACT THROUGH WIRE**  
VOLTS 48V DC/AC  
AMPERES  
3.5A CONTINUOUS CURRENT  
16.0A CURRENT INRUSH  
(300 MILLISECONDS)

**DRILLING INSTRUCTIONS**

NOTE A:  
DRILL AND DEBURR  $\phi$  1"  
HOLE IN FRAME REINFORCEMENT  
FOR THROUGH WIRES.

NOTE B:

1. NON-HANDED INSTALLATION-  
DRILL AND DEBURR TWO  
(2)  $\phi$  3/4" HOLES IN DOOR  
REINFORCEMENT PLATE  
FOR THROUGH WIRES.
2. RIGHT HAND INSTALLATION-  
DRILL AND DEBURR  $\phi$  3/4" HOLE  
FOR THROUGH WIRES IN  
DOOR REINFORCEMENT  
PLATE ON BOTTOM LEFT.
3. LEFT HAND INSTALLATION-  
DRILL AND DEBURR  $\phi$  3/4" HOLE  
FOR THROUGH WIRES IN  
DOOR REINFORCEMENT  
PLATE ON UPPER RIGHT.



**SKU: HAB850**

