

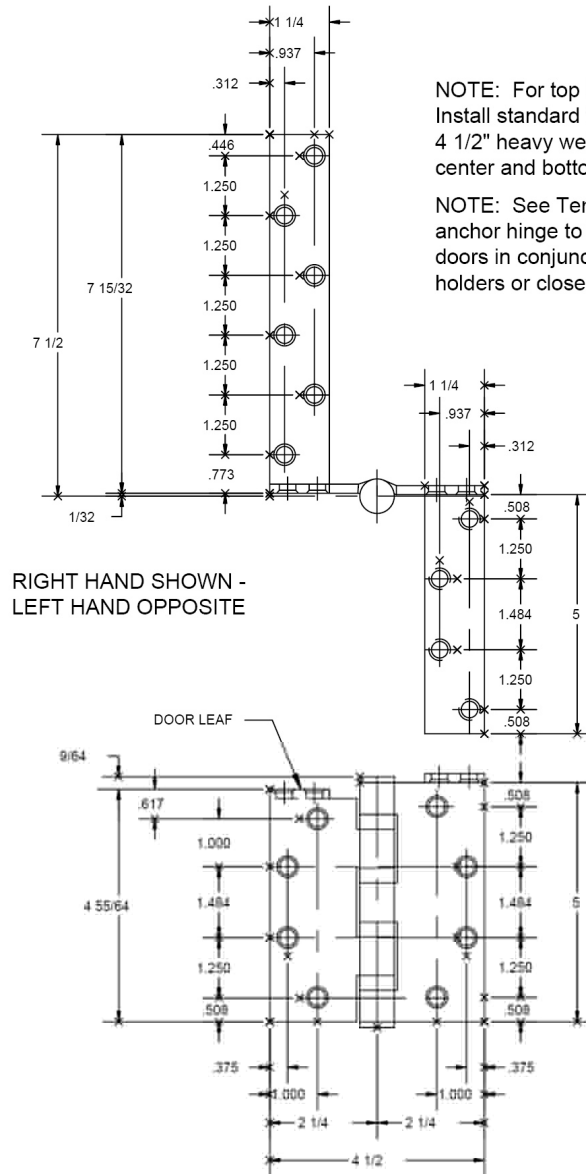


FULL MORTISE ANCHOR TEMPLATE HINGES

Template No. T 326

Rev. '96

SIZES: 5 x 4 1/2
FOR SQUARE EDGE DOORS



NOTE: For top hinge location only.
Install standard full mortise 5" x
4 1/2" heavy weight hinges at
center and bottom hinge locations.

NOTE: See Template No. T327 for standard
anchor hinge to be used on square edge
doors in conjunction with concealed door
holders or closers.

RIGHT HAND SHOWN -
LEFT HAND OPPOSITE

SKU: HAB8506

