



TRADEMARK HARDWARE

WORLD OF QUALITY HARDWARE

TRICON - FULL MORTISE TEMPLATE HINGES ELECTRIC THROUGH WIRE AND MONITOR TYPE ETM

Template No. T 524
Rev. '96



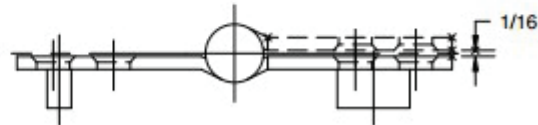
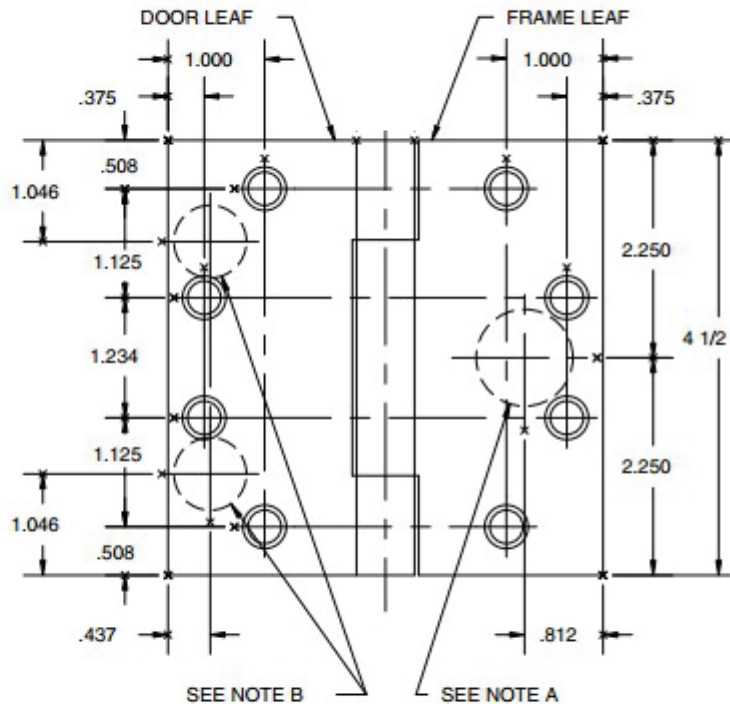
SIZES: 4 1/2 x 4, 4 1/2 x 4 1/2

ETM MAXIMUM ELECTRICAL RATING SWITCH VOLTS 48V DC/AC AMPERES 1.0A
CONTACT THROUGH WIRE VOLTS 48V DC/AC AMPERES 3.5A CONTINUOUS CURRENT 16.0A CURRENT INRUSH (300 MILLISECONDS)

DRILLING INSTRUCTIONS

NOTE A:
DRILL AND DEBURR ϕ 1"
HOLE IN FRAME REINFORCEMENT
FOR THROUGH WIRES.

- NOTE B:
1. NON-HANDED INSTALLATION-
DRILL AND DEBURR TWO
(2) 3/4" HOLES IN DOOR
REINFORCEMENT PLATE
FOR THROUGH WIRES.
 2. RIGHT HAND INSTALLATION-
DRILL AND DEBURR ϕ 3/4"
HOLE FOR THROUGH WIRES IN
DOOR REINFORCEMENT
PLATE ON BOTTOM LEFT.
 3. LEFT HAND INSTALLATION-
DRILL AND DEBURR ϕ 3/4"
HOLE FOR THROUGH WIRES IN
DOOR REINFORCEMENT
PLATE ON UPPER RIGHT.



SKU: HBB1199

