



**TRADEMARK
HARDWARE**

WORLD OF QUALITY HARDWARE

**TRICON - FULL MORTISE
TEMPLATE HINGES ELECTRIC
THROUGH WIRE TYPE ETW**

SIZES: 5 x 4, 5 x 4 1/2, 5 x 5

Template No. T 527
Rev. '96

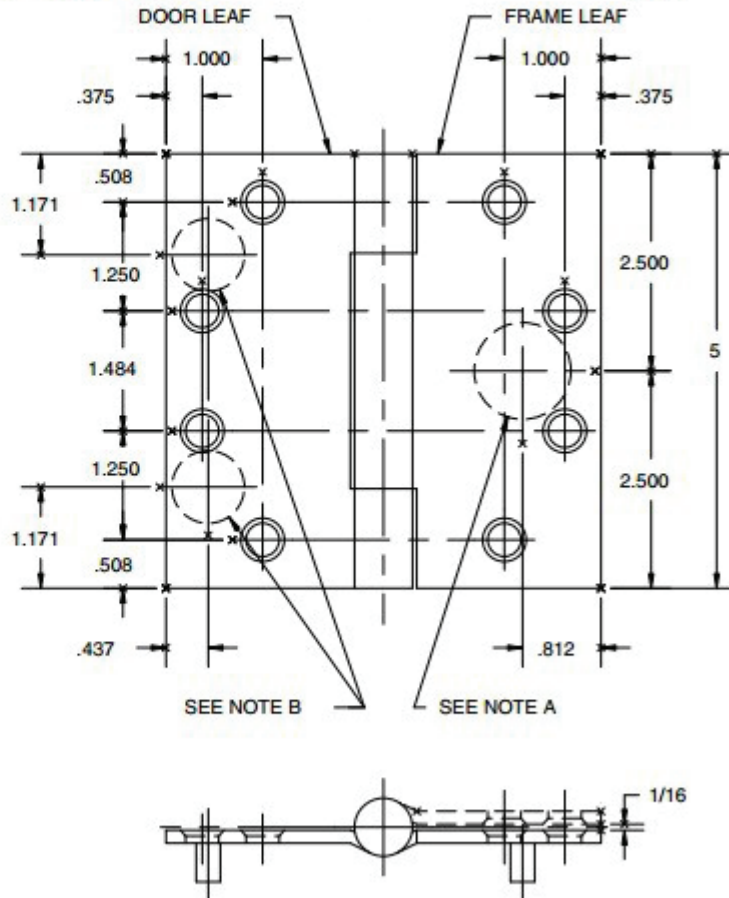


ETW MAXIMUM
ELECTRICAL RATING
CONTACT THROUGH WIRE
VOLTS 48V DC/AC
AMPERES
3.5A CONTINUOUS CURRENT
16.0A CURRENT INRUSH
(300 MILLISECONDS)

DRILLING INSTRUCTIONS

NOTE A:
DRILL AND DEBURR ϕ 1"
HOLE IN FRAME REINFORCEMENT
FOR THROUGH WIRES.

- NOTE B:**
1. NON-HANDED INSTALLATION-
DRILL AND DEBURR TWO
(2) ϕ 3/4" HOLES IN DOOR
REINFORCEMENT PLATE
FOR THROUGH WIRES.
 2. RIGHT HAND INSTALLATION-
DRILL AND DEBURR ϕ 3/4"
HOLE FOR THROUGH WIRES
IN DOOR REINFORCEMENT
PLATE ON BOTTOM LEFT.
 3. LEFT HAND INSTALLATION-
DRILL AND DEBURR ϕ 3/4"
HOLE FOR THROUGH WIRES
IN DOOR REINFORCEMENT
PLATE ON UPPER RIGHT.



SKU: HBB1199



www.tmhardware.com



845-388-1300



845-388-1388



sales@tmhardware.com