



**Trademark
HARDWARE**

PRODUCT SPECS



TRICOM – FULL MORTISE
TEMPLATE HINGES
ELECTRIC THROUGH WIRE
AND MONITOR TYPE ETM
SIZES: 5 x 4, 5 x 4 1/2, 5 x 5

Template No. T529

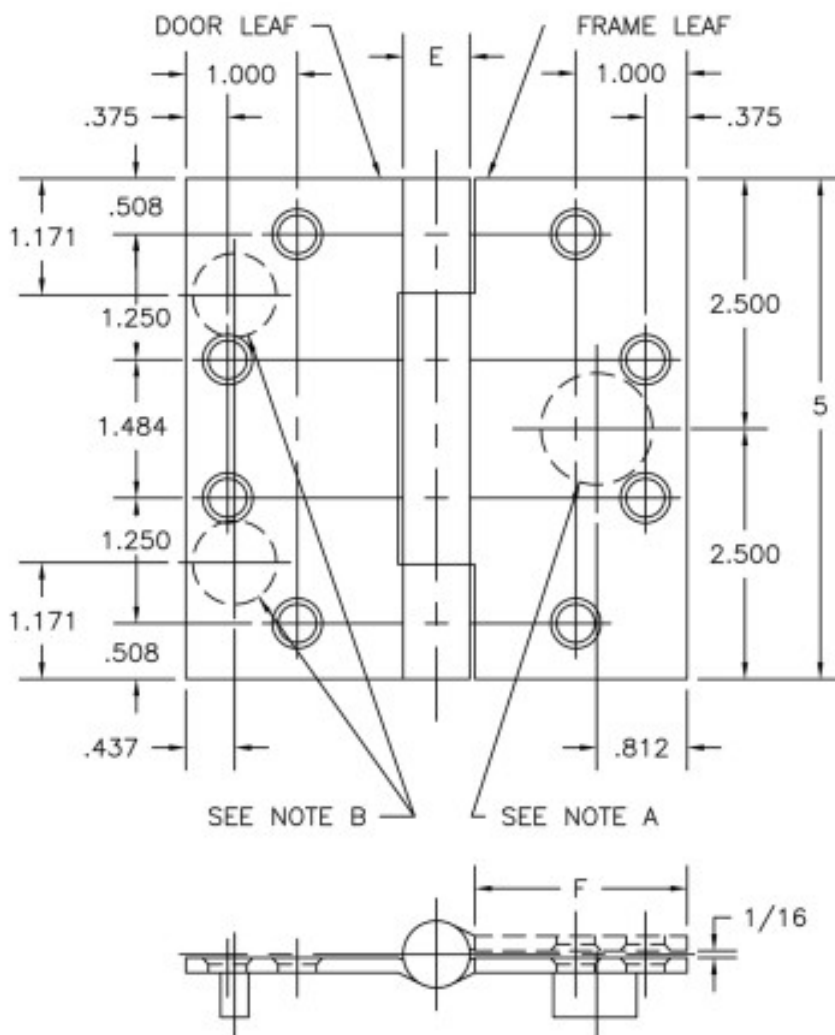
No.	REVISION	BY	DATE
1	ECO CT05035	RAM	8-15-05

ETM MAXIMUM ELECTRICAL RATING SWITCH	
VOLTS	30V DC
AMPERES	.500A
CONTACT THROUGH WIRE	
VOLTS	48V DC
AMPERES	3.5A CONTINUOUS CURRENT 16.0A CURRENT INRUSH (300 MILLISECONDS)

DRILLING INSTRUCTIONS

NOTE A:
DRILL AND DEBURR ϕ 1"
HOLE IN FRAME REINFORCEMENT
FOR THROUGH WIRES.

- NOTE B:
1. NON-HANDED INSTALLATION—
DRILL AND DEBURR TWO
(2) 3/4" HOLES IN DOOR
REINFORCEMENT PLATE
FOR THROUGH WIRES.
 2. RIGHT HAND INSTALLATION—
DRILL AND DEBURR ϕ 3/4"
HOLE FOR THROUGH WIRES
IN DOOR REINFORCEMENT
PLATE ON BOTTOM LEFT.
 3. LEFT HAND INSTALLATION—
DRILL AND DEBURR ϕ 3/4"
HOLE FOR THROUGH WIRES
IN DOOR REINFORCEMENT
PLATE ON UPPER RIGHT.



SKU: HIHTAB750

Discount Specials for All Products:

All orders over \$100 get 5% off.

All orders over \$200 get 5% off plus free shipping*

All orders over \$300 get 10% off plus free shipping*

All orders over \$600 get 15% off plus free shipping*

All orders over \$1,000 get 20% off plus free shipping*

*exclusions apply

**Trademark
HARDWARE**

148 Horton Drive, Suite B
Monsey, New York 10952

Phone: 845.352.3200
Fax: 845.367.4657

www.TMHardware.com
sales@tmhardware.com