



TRADEMARK HARDWARE

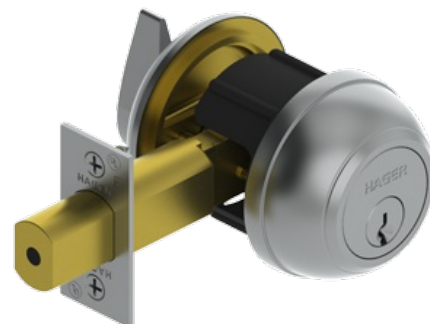
WORLD OF QUALITY HARDWARE

3100 Series

Grade 1 Deadlock

Applications:

- Auxiliary and primary locking
- Non-handed
- Conventional cylinder or Small Format Interchangeable Core housing available



PRODUCT SPECIFICATIONS

CERTIFICATIONS:

- BHMA Certified ANSI A156.5 Grade 1
- ANSI A250.13 Severe Windstorm Resistant Component
- UL/cUL Listed for all functions up to 3 hours for "A" single doors
- UL10B Neutral Pressure Rated
- UL10C Positive Pressure Rated
- ADA - Thumbturn

EXPOSED TRIM:

- Wrought brass or bronze

MECHANISM:

- Steel, zinc dichromate plating

KEYS:

- Two operating keys supplied per lock

CYLINDERS:

- Brass - Keyed Different - C Keyway
- Other keying options, including keyed 6-pin, available from the factory
- SFIC uncombined or combined, brass 6- or 7-pin sold separately
- Drilled 6-pin, Keyed 5-pin - Standard

DOOR THICKNESS:

- 1-3/4" - 2" (45 mm - 51 mm) - Standard
- 2" - 2-1/4" (57 mm) available for conventional cylinder - Must specify

BACKSET:

- 2-3/4" (70 mm) - Standard
- 2-3/8" (60 mm) - Optional

LATCHBOLT:

- 1" (25 mm) Throw - Brass with concealed hardened steel roller to prevent sawing or cutting
- 1-1/8" x 2-1/4" (29 mm x 57 mm) square corner faceplate

STRIKES:

- 3930 Square Corner, 1-1/8" x 2-3/4" (70 mm) with dustbox - Standard
- 3929 ASA Deadbolt Strike - Optional

STANDARD DOOR PREP:

- Cylinder hole: 2-1/8" (54 mm) diameter (cross bore)
- Latch hole: 1" (25 mm) diameter (edge bore)

FINISHES:

- US3, US4, US10, US10B, US26, US26D

FUNCTIONS:

- [14 - Double Cylinder](#), [15 - Cylinder x Thumbturn](#), [18 - Classroom](#)

OPTIONS:

- Split finish
- Additional deadbolts and strikes available



www.tmhardware.com



845-388-1300



845-388-1388



sales@tmhardware.com