



**Trademark
HARDWARE**

MARKAR FS3501 & FS3502 INSTALLATION INSTRUCTIONS

All holes in the hinge must be drilled correctly and fasteners properly installed. Failure to use the fasteners supplied by Markar Architectural Products, Inc. will void the UL or WHI fire rated listing.

The screw pack contains machine screws. Make sure that the thickness of the frame and door face is sufficient to carry the load.

(1) Place the hinge on the frame as shown in Figure 1 on the other side of these instructions.

- Allow 1/8" between the top of the hinge and the underside of the header.
- Note that at least 1 13/16" of the frame face is required for mounting this hinge.
- Hospital tips should be mounted on the top of the door.

(2) Mark the position of the top and bottom holes with a center punch. The use of the Markar MT-806 center punch can help center the hole so that the fasteners will enter straight. The taper on the tool sits in the countersunk hole on the hinge. Make sure the hinge is straight.

(3) Drill the holes with a #16 drill.

(4) Tap the holes for a 12-24 thread.

(5) Attach the hinge to the frame using the 12-24x1/2" Phillips flat head undercut machine screws.

(6) After the top and bottom screws are secure, repeat steps 2, 3, 4, and 5 for the balance of the holes on the frame leaf.

(7) Fold the door leaf back over the frame leaf and place the door into the opening.

- Place shims under the door to provide 1/8" clearance between the frame and the top of the door.
- Add shims at both the hinge and latch side of the door so that there will be 1/8" clearance between the door and frame on the lock side.

(8) With the door firmly in place, return the door leaf to the face of the door and repeat the drilling procedure described in steps 2 through 5.

(9) Open the door and check for proper swing.

(10) Fasten the rest of the screws by repeating steps 2 through 5.

- Machine screws with Torx driver heads are an option.



**Trademark
HARDWARE**

148 Horton Drive, Suite B
Monsey, NY 10952

Phone: 845-388-1300
Fax: 845-367-4657

www.TMHardware.com
sales@tmhardware.com

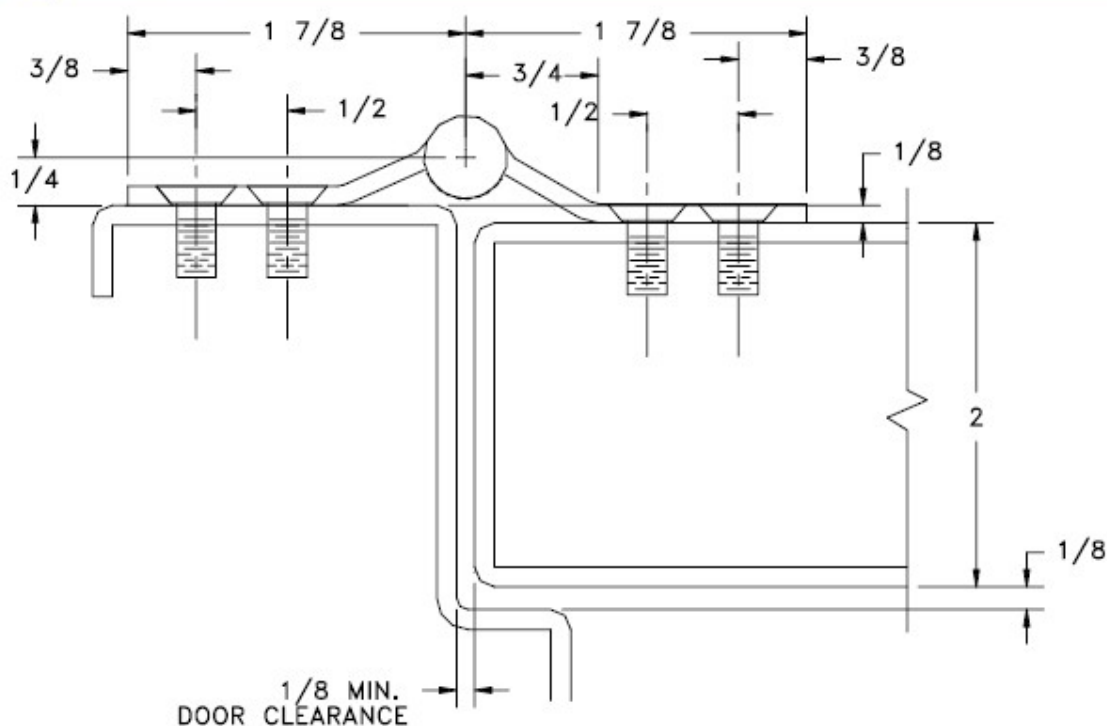
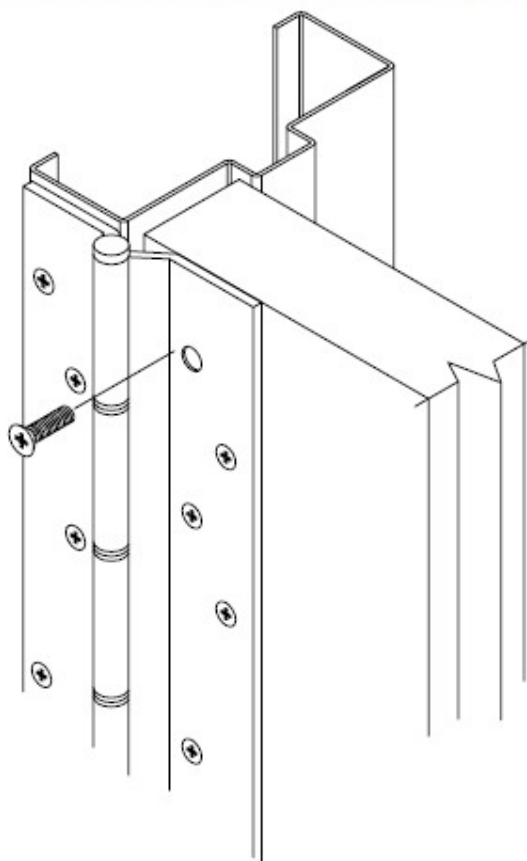


Figure 1: Hinge Placement & Clearance Template



STANDARD HARDWARE



MP-35 (stainless)
12-24 x 1/2" Phillips Flat Head
Undercut Machine Screw
7' QTY: 42 8' QTY: 46 10' QTY: 54

OPTIONAL SECURITY HARDWARE



MP-39 (stainless)
12-24 x 1/2" Torx Flat Head
Undercut Machine Screw
7' QTY: 42 8' QTY: 46 10' QTY: 54

Figure 2: Installation (Exploded View)



www.TMHardware.com
sales@tmhardware.com

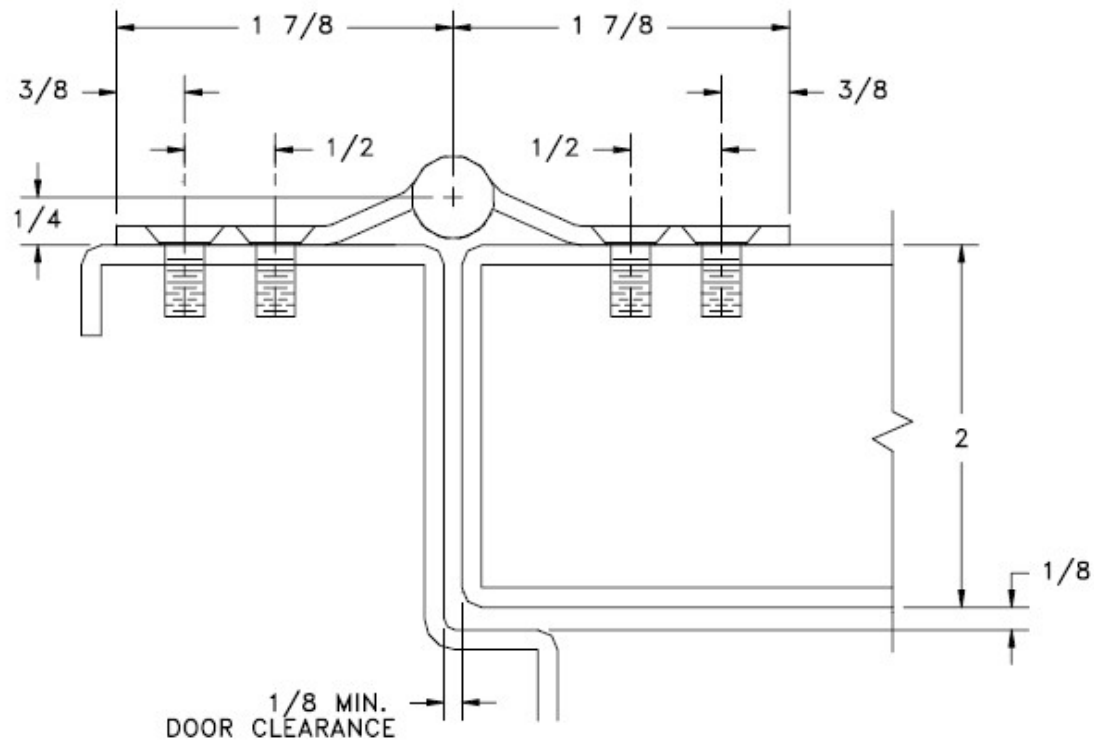
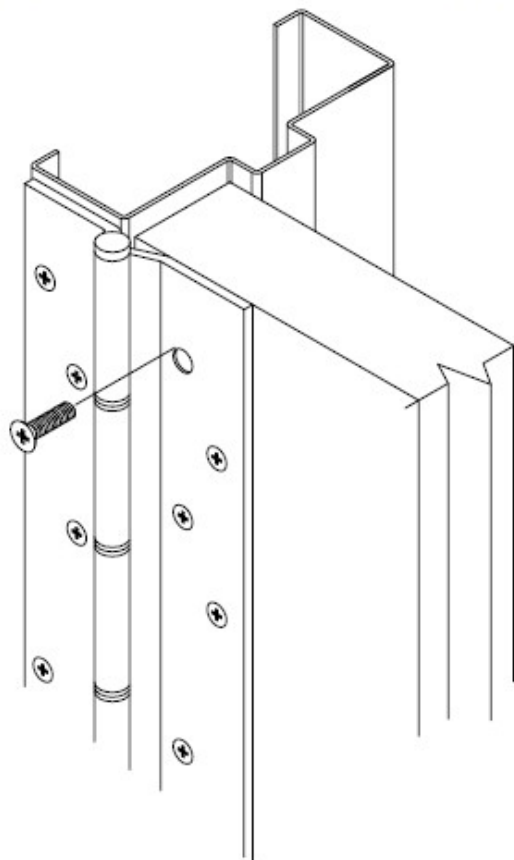


Figure 1: Hinge Placement & Clearance Template



STANDARD HARDWARE



MP-35 (stainless)
12-24 x 1/2" Phillips Flat Head
Undercut Machine Screw
7' QTY: 42 8' QTY: 46 10' QTY: 54

7' QTY: 42 8' QTY: 46 10' QTY: 54

OPTIONAL SECURITY HARDWARE



MP-39 (stainless)
12-24 x 1/2" Torx Flat Head
Undercut Machine Screw
7' QTY: 42 8' QTY: 46 10' QTY: 54

7' QTY: 42 8' QTY: 46 10' QTY: 54

Figure 2: Installation (Exploded View)