



**Trademark  
HARDWARE**

# MARKAR HM204, HM304 HINGE INSTALLATION

---

All holes in the hinge must be drilled correctly and fasteners properly installed. Failure to use the fasteners supplied by Markar Architectural Products, Inc. will void the UL or WHI fire rated listing.

**Do not** install Snap-On cover until installation is 100% complete, and all aspects of the assembly are correctly fastened and properly fitted. The Universal Screw Pack contains sheet metal, machine, and self-drilling Tek screws. This allows three different installation options. If mounting a wooden or unreinforced door, follow option (A) in the instructions. Follow option (B) if the door is reinforced or at least 1/8" thick. If you use the self-drilling Tek screws (recommended for grout-filled frames), follow option (C).

- Perform each step of these instructions unless specifically labeled (A), (B), or (C).

- (1) Place hinge on the edge of the door as shown in Figure 1 on the other side of these instructions. Carefully line up the hinge with the top and back edges of the door.
- (2) Mark all the hole locations on the door with the hinge held firmly in place.
- (3) Center punch each hole. The use of the Markar MT-806 center punch can help center the hole that the fasteners will enter straight. The taper on the tool sits in the countersunk hole on the hinge.
- (4) (A)&(B) Drill all the holes using a #25 bit.
- (5) (A) Attach the hinge to the door with #10 x 1 1/4" flat head undercut sheet metal screws.  
OR
- (6) (B) Tap the holes for a 10-24 thread. Attach the hinge to the door with 10-24 x 3/4" flat head undercut machine screws. OR
- (7) (C) Attach the hinge to the door with #10 x 1/2" flat head undercut self-drilling Tek screws.
- (8) Place the hinge and door in the opening.
  - Place shims under the door to provide 1/8" clearance between the frame and top of the door.

- Add shims at both the hinge and latch side of the door so 1/8" clearance will be maintained on the lock side of the door. Swing the frame leaf of the hinge over the frame.

(9) Molly Jacknuts (MP-20) are available from your hardware supplier as an optional means of attaching the door.

(10)(C) Mark the position of the top and bottom holes with a center punch, then drill and fasten with self-drilling Tek screws.

(11) Close the door and check for proper alignment.

- If the door requires adjustment for proper fit, make this adjustment by removing screws on the frame leaf and readjusting the door in the opening.

(12) Permanently install the frame leaf with the remaining screws.

(13) Install five (5) cover clips by passing each screw through the clip, door leaf and door. (See Figure 2.)

- Markar recommends that clips be positioned in the top, center and bottom holes, with the remaining two clips spaced equally along the length of the hinge.
- When installation is complete (see **Note** at the top of these instructions), install the Snap-On cover.

(14) Engage the side of the cover next to the hinge pin first.

(15) Insert a large screwdriver between the hinge knuckle and the cover. Using the screwdriver as a lever, twist it and snap the opposite side of the cover onto the clip.

(16) Start at the top and work downward until the entire length of the cover is firmly engaged.

(17) With the cover firmly in place, secure it at both ends through the hinge and into the door with #8 x 3/4" self-drilling flat head Tek Screws.

---

**Trademark  
HARDWARE**

148 Horton Drive, Suite B  
Monsey, NY 10952

Phone: 845-388-1300  
Fax: 845-367-4657

www.TMHardware.com  
sales@tmhardware.com



**Trademark  
HARDWARE**

# MARKAR HM204, HM304 HINGE INSTALLATION

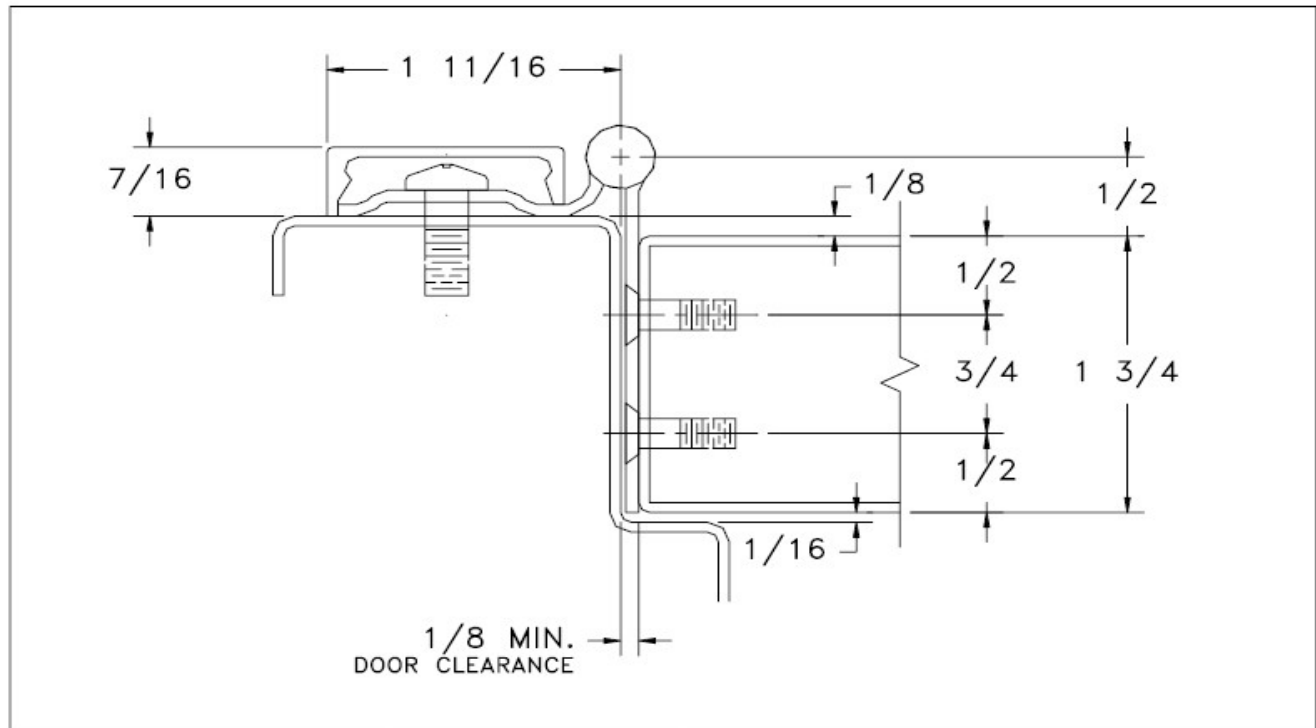


Figure 1: Hinge Placement & Clearance Template

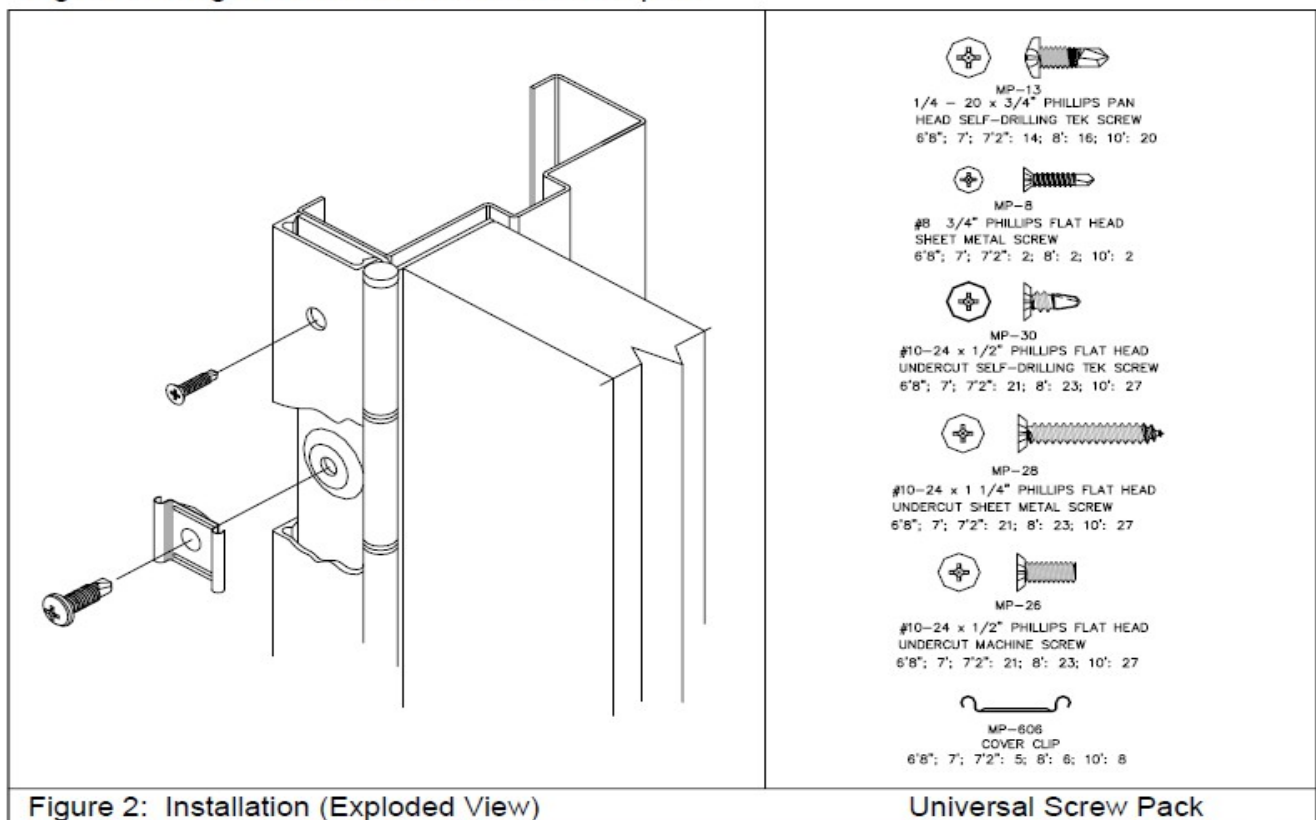


Figure 2: Installation (Exploded View)

**Trademark  
HARDWARE**

148 Horton Drive, Suite B  
Monsey, NY 10952

Phone: 845-388-1300  
Fax: 845-367-4657

www.TMHardware.com  
sales@tmhardware.com