



**Trademark  
HARDWARE**

# MARKAR CONTINUOUS HINGES

## ADJUST-A-SCREW™

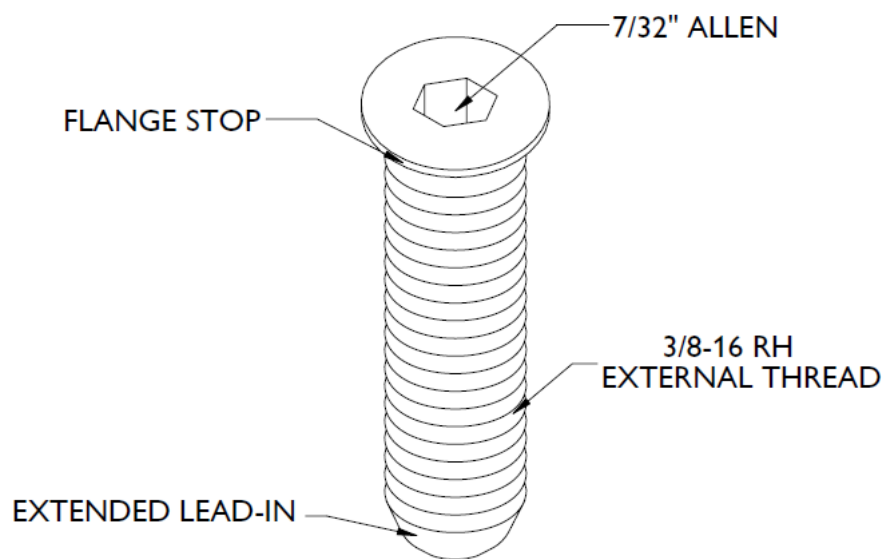
### Non-Handed Adjust-A-Screw™

Markar's Adjust-A-Screw™ fastening system for continuous hinges and edge guards allows installers to easily solve door clearance (fit) problems in the field. By turning the Adjust-A-Screw™ "stud" in or out with an Allen wrench, the entire door edge can be adjusted up to 3/8" to give a perfect fit every time.

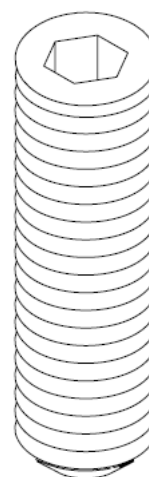
To prevent the stud from falling into a steel door during installation, Markar initially developed the stud with left-hand threads. While this solved one problem, it was often difficult for installers to locate the required tap for lefthand threads. Recent improvements allow for a single right-hand threaded stud to be used in both wood and steel applications.

The newly designed stud was created with a thin flange around the head to provide a positive stop when fully threaded into the door. The flange acts as a hard stop and prevents the stud from dropping into the door cavity. In addition, the new stud also has a longer lead-in for ease of installation into wood or metal door applications.

The new Adjust-A-Screw™ fasteners were phased in on June 1, 2011.



**New Adjust-A-Screw™**



**Older Adjust-A-Screw™**