



Norton®

ASSA ABLOY

ASSA ABLOY, the global leader
in door opening solutions

Concealed overhead closer
for high-end applications

7900 S E R I E S

DOOR CLOSERS

CATALOG

INTRODUCTION

The 7900 Series Overhead Concealed Closers offer extremely durable operation with the vandal resistance and concealment necessary for high security and high end architectural openings.



Applications

- » Mental Health Facilities
- » Detention Centers
- » Healthcare Facilities
- » Office Buildings
- » Theatres
- » Conference Centers

FEATURES

- | | | |
|--|------------------------------------|---|
| » Steel track & slider | » Non-critical valves | » Power choices |
| » Polymer slider pads | » Adjustable sweep speed | » Sized closer (4, 5, 6) |
| » Fully adjustable, multi-point hold open (7900) | » Adjustable latch speed | » Multi-size closer (0) |
| » Dress plates furnished standard | » Adjustable backcheck cushioning | » Torx® screws furnished standard (7970 only) |
| » Shock absorbing door stop | » Adjustable backcheck positioning | » Door Position Switch (DPS) option (7970 only) |
| » Aluminum alloy shell | » Delayed action option | » 10-year limited warranty |
| » Rack & pinion operation | » Enhanced backcheck option | |

TABLE OF CONTENTS

Introduction, Features.....2

Overview, Certifications.....3

Explanation of Features, Optional Features, Specifications.....4-5

Installation.....6-8

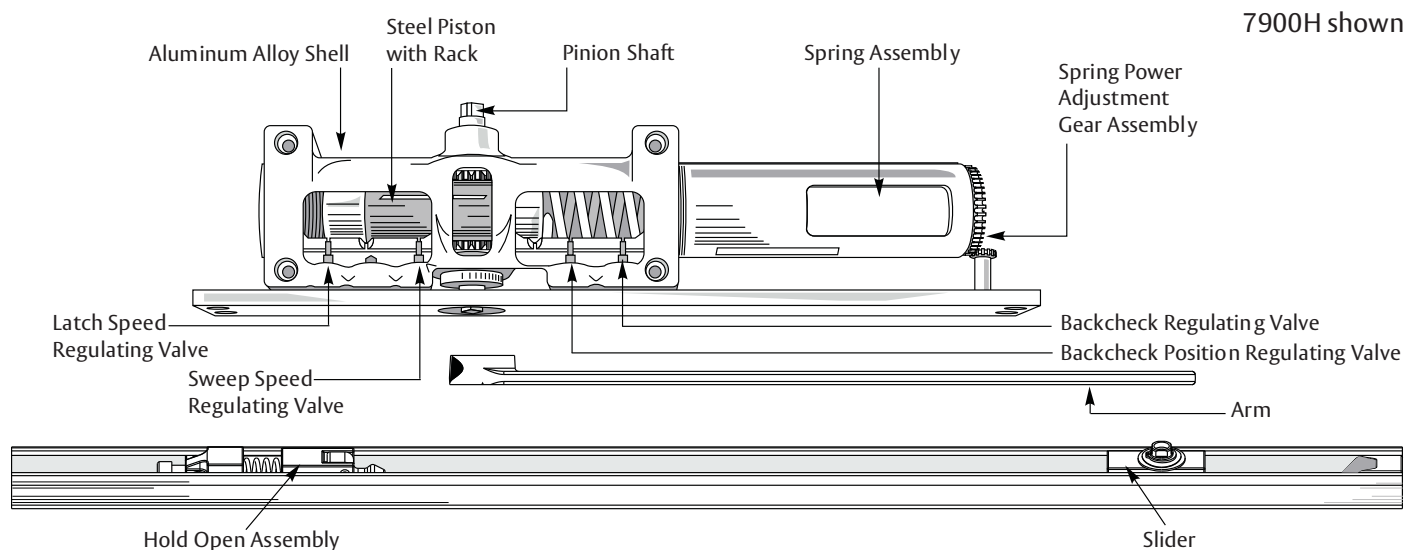
Parts.....9-10

Door Size, Finishes.....11

How to Order.....12

7900 SERIES OVERHEAD CONCEALED DOOR CLOSERS

OVERVIEW



CERTIFICATIONS

- » ANSI A156.4, Grade 1
- » UL / cUL listed for use on fire rated doors 
- » UL10C listed for positive pressure fire test
- » Comply with requirements for the Americans with Disabilities Act (A.D.A) and ANSI standard A117.1 
- » This product is manufactured in an ISO 9001 facility

NYC Listing

These closers are also listed with New York City Materials and Equipment Acceptance Division (41-60-SM).

WHI

The Norton Fire Block door liner is listed with Warnock Hersey International for use in 20-minute (wood) fire doors that are listed with WHI, when used with the Series 7900 door closer. Specify model number 790. The combination of a 7900 door closer installed in a UL labeled hollow metal door frame and a Norton Fire Block installed in a WHI labeled 20-minute (wood) fire door, which has the tested preparation, may qualify as a 20-minute fire door assembly. Always consult local authorities to determine the acceptance and proper application of fire door and hardware applications.

EXPLANATION OF FEATURES

Concealed Transom Mounting:

Closer is concealed in the header of hollow metal, aluminum or wood frames. Installation requires a minimum 4" (102mm) high frame header. A removable frame stop furnished by the frame supplier is required where doors are less than 2" (51mm) thick. A dust/grout box 2" x 4" (51 x 102mm) x required length furnished by the frame supplier where conditions warrant the need for one. Consult factory for wood header installations.

Door Thickness:

1-3/4" - 2-1/4" (44-57mm) thick doors

Top Rail Mounted Slide Track:

Slide track is mounted into a recess prepared in the top rail of wood, aluminum or hollow metal doors. Depth of cutout at top of door 1-3/16" (30mm).

Fire Block Door Liner:

Available for use in 20-minute fire door assemblies where recognized by the local authority having jurisdiction.

Standard Door Hanging Hardware:

Closer and slide track can be installed on doors hung with butt hinges, offset pivots or center pivots. Hinges or pivots furnished by others.

Concealed Arm:

Closer arm is concealed when the door is closed. Requires a 3/8" (9.5mm) deep stop side door cutout for arm clearance.

Shock-Absorbing Door Stop:

Non-hold open and hold open units have a shock-absorbing adjustable position stop in the slide track. Use of auxiliary door stop is always recommended, not supplied.

Hold Open:

Sliding mechanism in channel changes position of hold open. The range of hold open points is dependent upon how the door is hung:

- » 85° to 110° for doors hung on butt hinges.
- » 85° to 95° for doors hung on offset pivots.
- » 85° to 100° for doors hung on center pivots.

Adjustable Hold Open Tension:

Hold Open tension can be increased or decreased by adjusting the tension on the slide track spring with a hex-key drive adjusting screw; or the hold open function can be totally eliminated by this same means.

Aluminum Alloy Shell:

Series 7900 closer bodies are constructed of a special aluminum alloy carefully selected to accommodate individual closer characteristics and operating conditions.

Rack & Pinion Operation:

A smooth power transmission through entire opening and closing cycle is provided by a long addendum gear form.

Spring Power Adjustment:

- » 50% power adjustment for closer sizes 4, 5 and 6. Each closer can be adjusted by 50% over the minimum closing force for each size.
- » Multi-sized power adjustment for closer sizes "0".

Adjustable Sweep Speed:

An independent, hex-key operated regulating valve permits adjustment of the general closing speed.

Adjustable Latch Speed:

An independent, hex-key operated regulating valve permits adjustment of the door's speed for approximately the last 5° of the closing cycle.

Adjustable Backcheck Cushioning:

An independent, hex-key operated regulating valve provides an adjustable hydraulic cushion to the door opening speed toward the end of the opening cycle.

Adjustable Backcheck Positioning:

An independent hex-key operated regulating valve allows adjustment of the point in the door's opening cycle at which backcheck cushioning takes effect. It provides a range of 20° within which backcheck can be set.

Non-Critical Valves:

All control valves for sweep/latch speed, backcheck control and delayed action closing are non-critical and are adjusted by a standard 1/8" hex-key.

Non-Hold Open and Hold Open Arms:

Arm is 13" (330mm) long with an offset bend to permit door openings to 180°. Arm is handed. A special arm is furnished when hold open is required and the door is hung on center hung pivots. This straight arm is 16" long and non-handed.

Separate Hinges/Pivots:

Door is hung with butt hinges, 3/4" offset pivots or center pivots (by others). There is no need to open the door closer packaging to supply the hinges/pivots to the job or the door supplier. This eliminates problems with coordination of the hardware with other trades and reduces the probability of lost hardware.

OPTIONAL FEATURES

Enhanced Backcheck:

Adjustable backcheck intensity beginning at approximately 15° of the door opening cycle. It is intended for use in situations where the standard backcheck beginning at approximately 75° of opening allows too much unrestricted door travel to obtain control of the door without the fear of peripheral damage to the door closer, door, frame, hinges or pivots; or adjacent walls or structures. Specify EBC when ordering. **Offered in lieu of standard backcheck and backcheck positioning.**

Door Position Switch (7970 only):

This switch is Single Pole Double Throw (SPDT) momentary contact, with one normally open and one normally closed set of contacts. The three switch terminals are wired to the integral conduit box for connection to incoming wiring. The switch and wiring are for operation with 6 to 24 VAC/DC systems.

Door Position Switch Adjustment: Can be made at the opening without removing the closer from the frame. The door position adjustment test socket is accessible during installation for easy adjustment of the switch cam. Test probes from a volt meter are inserted into the test socket while using 1/8" hex wrench to adjust the position switch adjustment.

» Test Socket:

Volt meter or test light may be connected to test socket to test normally open circuit or normally closed circuit at the door opening. The door position switch may be adjusted at the same time without removal of closer from door.

- » **Adjustable Delayed Action Closing:** An optional hydraulic feature that adds a third speed range to the closing control cycle. This feature becomes effective when the door is opened and released at any point beyond 70°. This delayed closing enables traffic to clear the opening before the normal closing cycle starts. This feature is advantageous to the handicapped, elderly or wheeled traffic. Order by suffixing "DA" to the model number.

Accessibility Code Closer:

These closers provide reduced opening forces to conform with barrier code requirements (as specified in ANSI A117.1) for the handicapped while still providing acceptable door control. **Specify 7900 or 7970.**

SPECIFICATIONS

Closers for exterior (and) interior doors shall be full rack and pinion type with cast aluminum alloy shell. Closers shall be concealed in a 4" (102 mm) high frame header. The slide track shall be concealed in the top rail of the door. Hydraulic fluid shall be non gumming and non-freezing. (Closer shall be provided with a fireblocking door liner to permit installation in 20-minute wood fire door assemblies.) Closer shall have (four) (five) noncritical valves, hex-key operated, to independently regulate sweep speed, latch speed, backcheck cushioning (and backcheck positioning) (and delayed action closing). [Closers shall be sized units (4, 5 or 6)].

[Closers shall have power adjustment to permit a 50% increase in power over the minimum closing force for any size.]

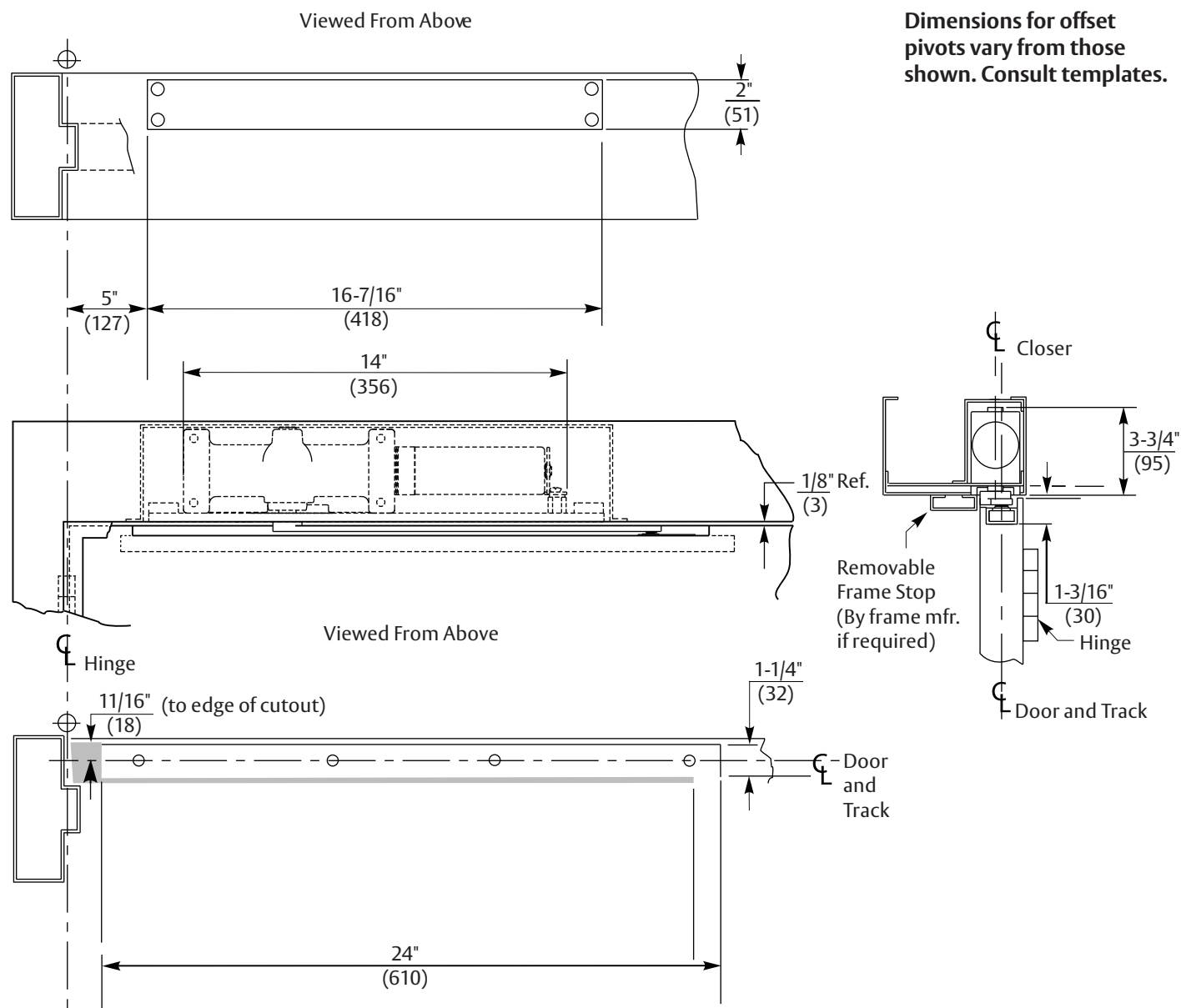
[Closers shall have multi-sized adjustment for (interior doors)(exterior doors)]. Closer shall conform to Accessibility Code specifications. Degree of stop shall be field adjustable.

Slide track shall have a built-in cushioning shock absorber mechanism. (Hold open mechanism shall be capable of release when holding function is not required. Hold open mechanism shall have an adjustable range 85°-110° of door opening and shall release with a manual pressure on the edge of the door in the direction of closer). Closer to be Norton® [Series 7900] [Series 7970] (with Norton® #790 Fire Block). 7970/7970DPS shall be supplied with Torx® lobular drive fasteners having a center security pin.

7970 DPS

Closer to have a door position switch to indicate "Door Open/Door Closed" condition.

7900 BUTT HINGE INSTALLATION

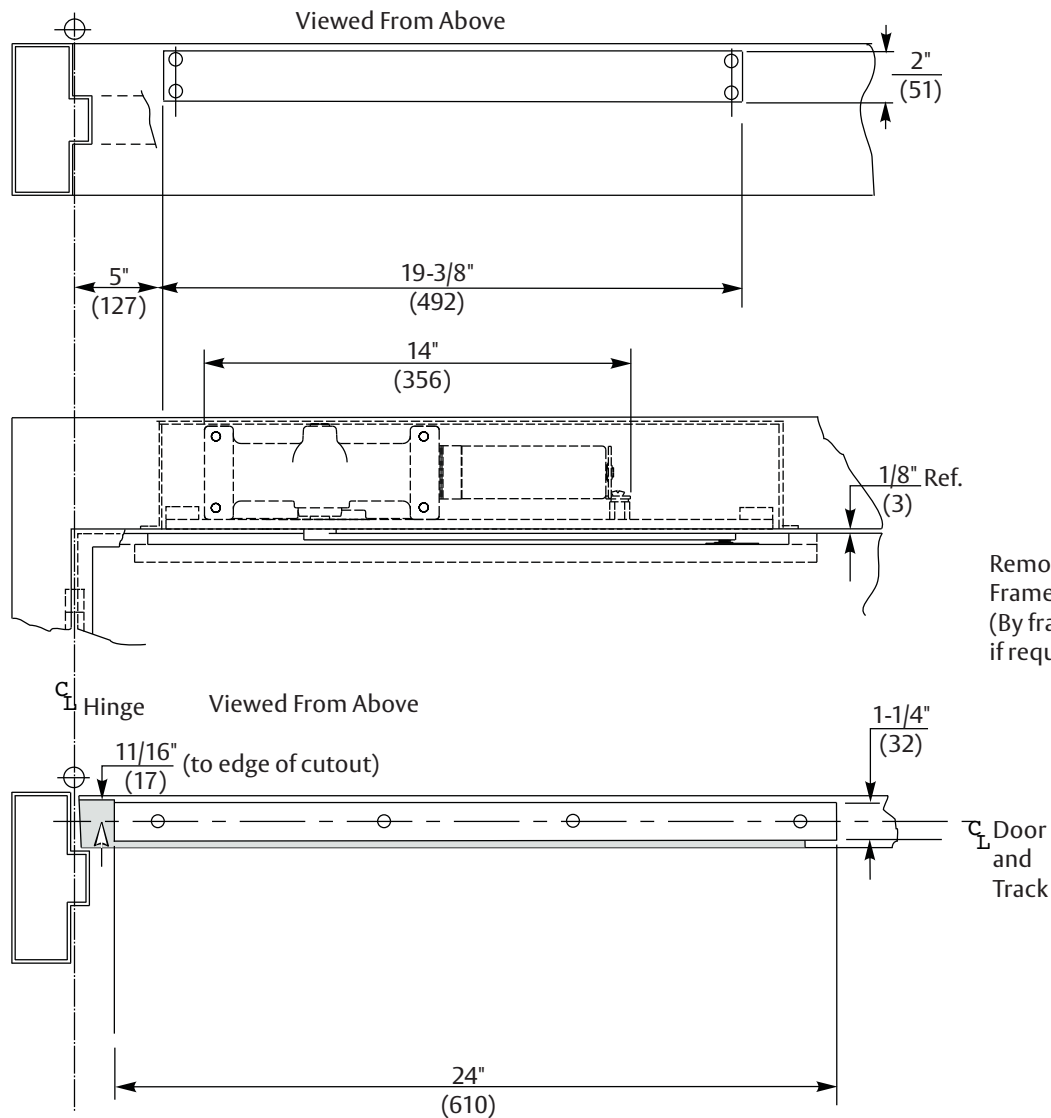


Note:

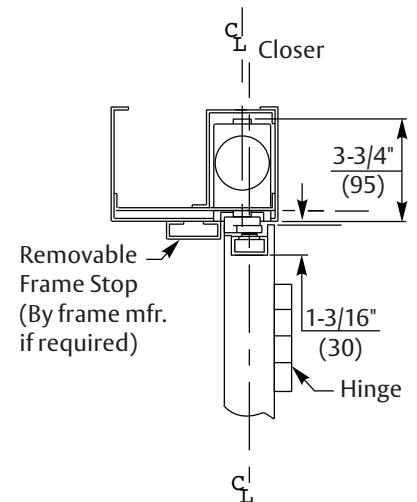
- » Left hand door shown
- » Minimum door width 27"
- » 1-3/4" to 2-1/4" thick doors
- » Maximum width hinge is 5"
- » Contact factory if door weight exceeds 250 lbs.

7900 SERIES

OVERHEAD CONCEALED DOOR CLOSERS



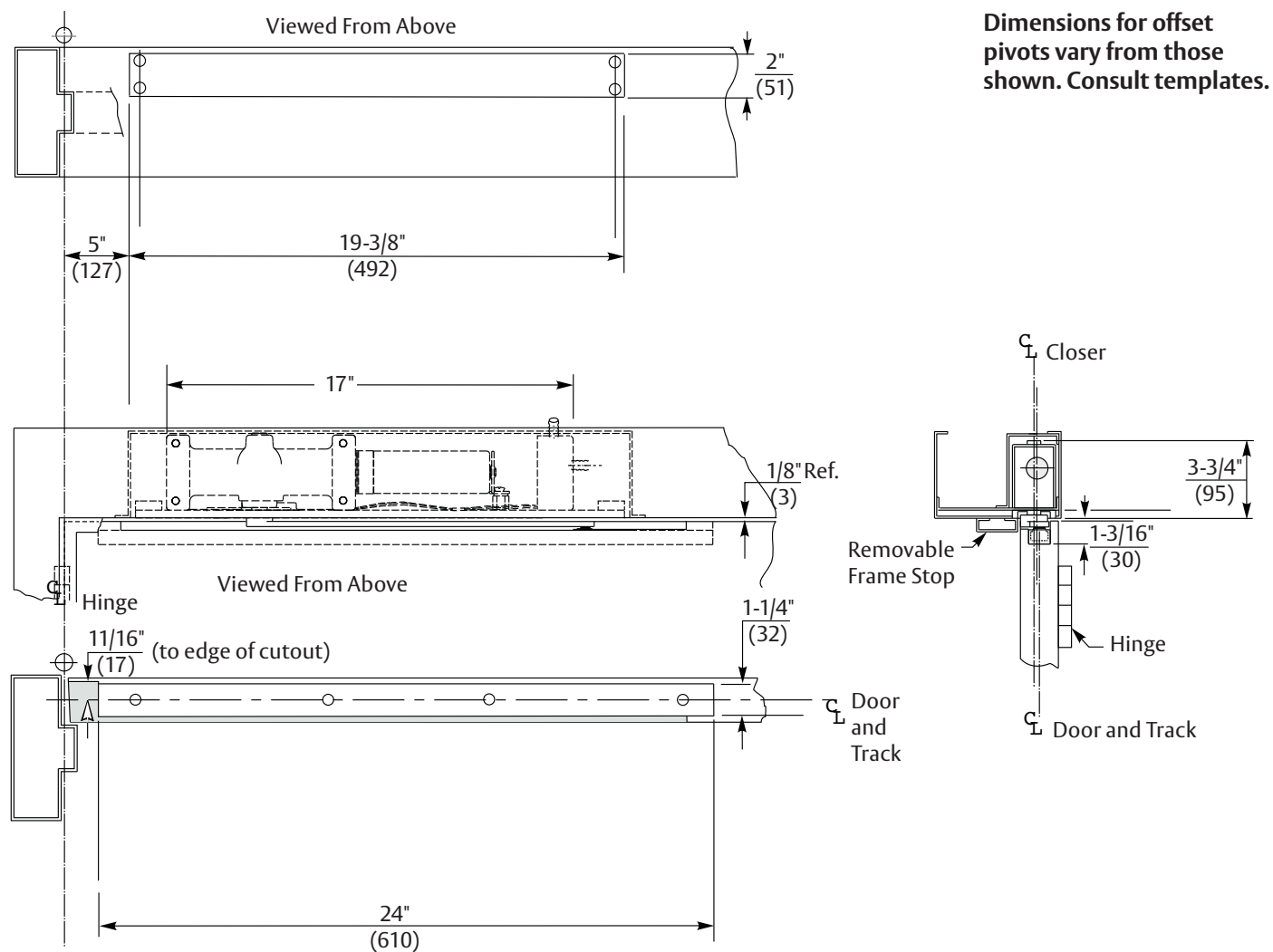
Dimensions for offset pivots vary from those shown. Consult templates.



Note:

- » Left hand door shown
- » Minimum door width 27"
- » 1-3/4" to 2-1/4" thick doors
- » Maximum width hinge is 5"
- » Contact factory if door weight exceeds 250 lbs.

7970DPS BUTT HINGE INSTALLATION

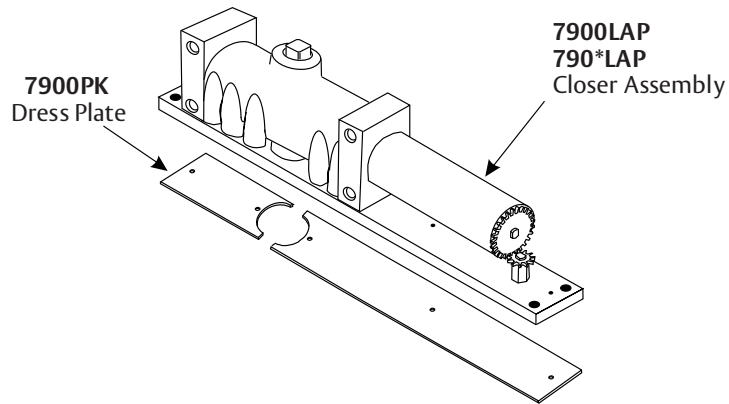


Note:

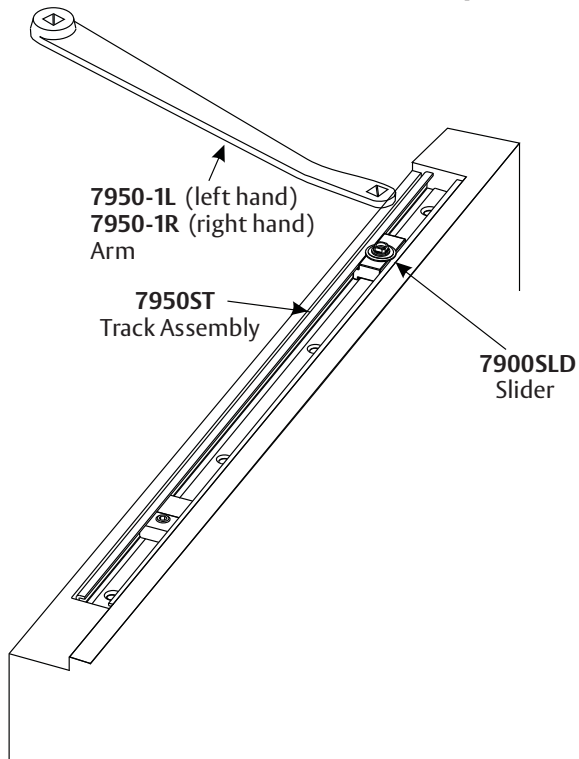
- » Left hand door shown
- » Minimum door width 27"
- » 1-3/4" to 2-1/4" thick doors
- » Maximum width hinge is 5"
- » Contact factory if door weight exceeds 250 lbs.

7900 SERIES OVERHEAD CONCEALED DOOR CLOSERS

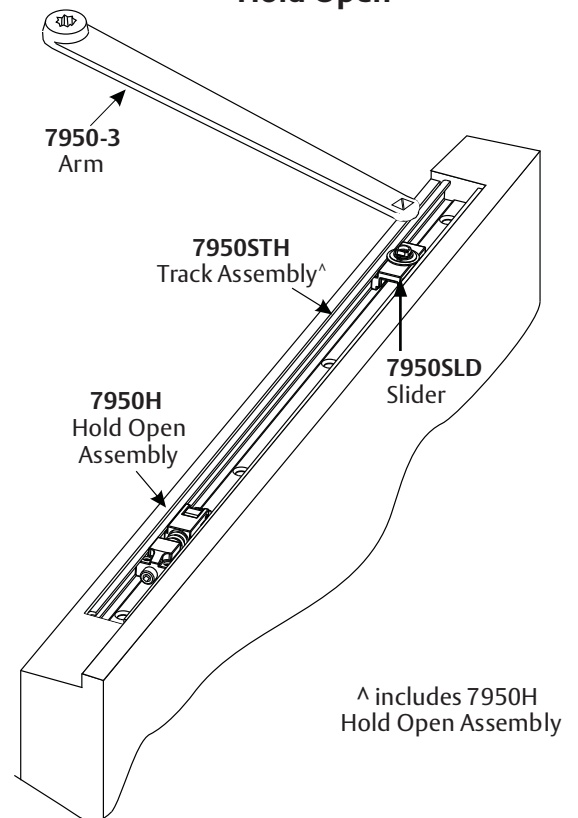
PARTS



Non-Hold Open



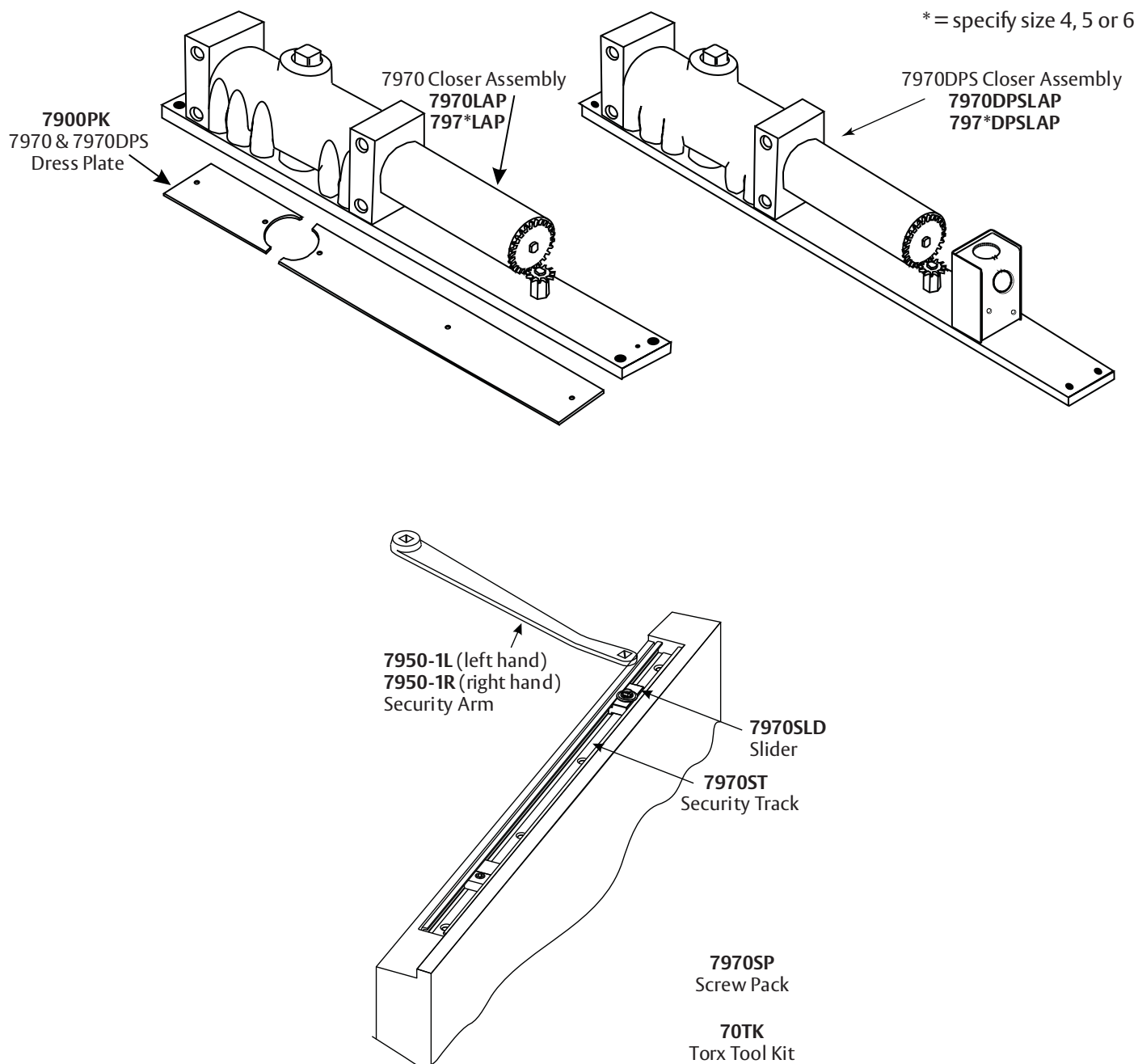
Hold Open



Specify finish when ordering parts.

7900SP
Screw Pack

PARTS



Specify finish when ordering parts.

7900 SERIES OVERHEAD CONCEALED DOOR CLOSERS

DOOR SIZE

Maximum Door Size Wood or Metal Inches (Centimeters)		Model Number	
Interior	Exterior	Non-Hold Open	Hold Open
32" (81)	—	7904/7974	7904H STAT
38" (97)	32" (81)	7905/7975	7905H
48" (122)	38" (97)	7906/7976	7906H
Accessibility Code Compliance			
48" (122)	36" (91)	7900	7900H

Door sizing information is based on installation on standard weight doors hung on anti-friction hinges or pivots and operating under normal conditions. For doors in excess of 7'6" or on extra-heavy doors, where draft conditions exist or where door swings beyond 150°, use next larger size closer.

Ball-bearing or anti-friction hinges or pivots are always recommended for use with doors having door closers. They are required for fire door applications, except where a door manufacturer has a specifically listed fire door assembly.

When requesting templates, specify door hanging hardware (i.e. B = butt hinges, CP = center hung pivots, OP = offset pivots).

FINISHES

Sprayed Finishes

Description	BHMA Designation	Complements the following finishes
Aluminum	689	628, 625, 629, 630, 651, 652
Statuary Bronze	690	640, 613
Dull Bronze	691	612, 637, 639
Black	693	315
Medium Amber	694	312
Gold	696	605, 606, 632, 633
Black Suede Powder	BSP	—

Plated Finishes

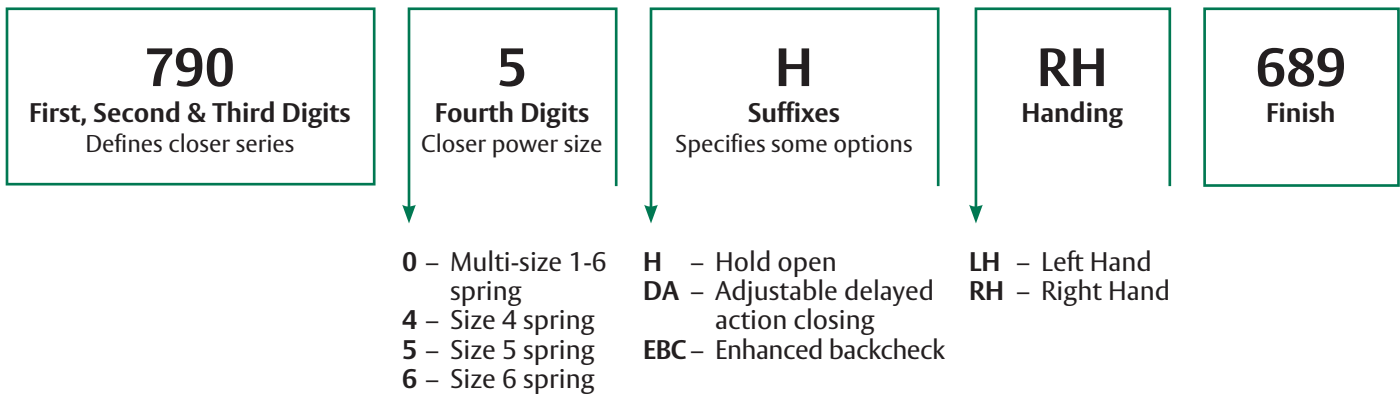
Description	BHMA Designation
Bright Brass	605
Satin Brass	606
Bright Chrome	625
Satin Chrome	626

Order sprayed and plated finishes by BHMA designations.

HOW TO ORDER

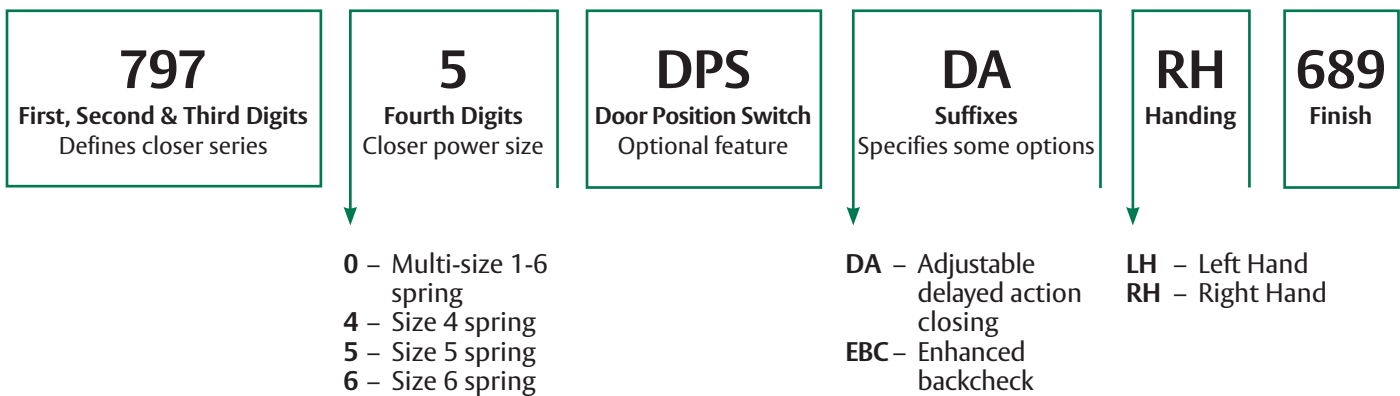
7900 Door Closers

Use the following outline to select the correct catalog number for the closer you require.



Note: For 20-min wood fire doors, order 790 Fire Block package.

7970/7970DPS Security Door Closers



Note: For 20-min wood fire doors, order 790 Fire Block package.

Packaging information:

All Norton® Series 7900 closers are packed one to a box, with an arm and a slide track, one hex key for control valve adjustment (and hold open tension adjustment), one hex key for arm to track attachment, one hex key for anchoring cushion stop in track. Installation instructions and both wood screws and metal screws for mounting are included.

Norton®
ASSA ABLOY

ASSA ABLOY is the global leader in door opening solutions, dedicated to satisfying end-user needs for security, safety and convenience

Since 1880, Norton door controls have been an integral part of schools, hospitals and businesses around the globe. When you need products and people that perform at the highest level, rely on Norton – From Open to Close.

Norton Door Controls | www.nortondoorcontrols.com

3000 Highway 74 East | Monroe, NC 28112 | Tel: 1-877-974-2255 | Fax: 1-800-338-0965

ASSA ABLOY Door Security Solutions Canada | www.assaabloydss.ca

160 Four Valley Drive | Vaughan, Ontario, L4K 4T9 Canada | Tel: 800-461-3007 | Fax: 1-800-461-8989

Norton is a brand associated with ASSA ABLOY Accessories and Door Controls Group, Inc., an ASSA ABLOY Group company. Copyright © 2012-2018, ASSA ABLOY Accessories and Door Controls Group, Inc. All rights reserved. Reproduction in whole or in part without the express written permission of ASSA ABLOY Accessories and Door Controls Group, Inc. is prohibited.