

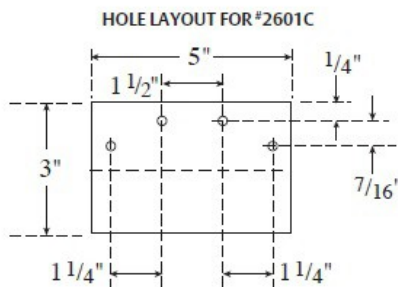
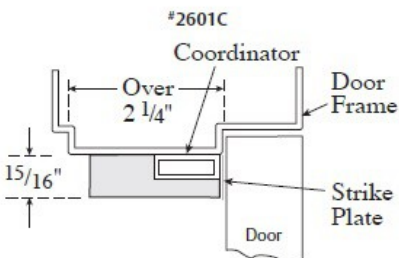
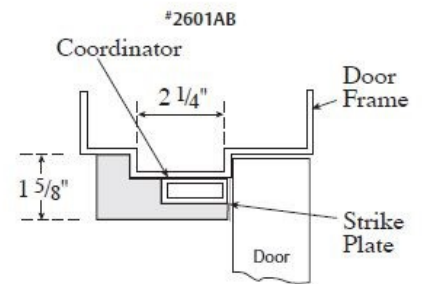
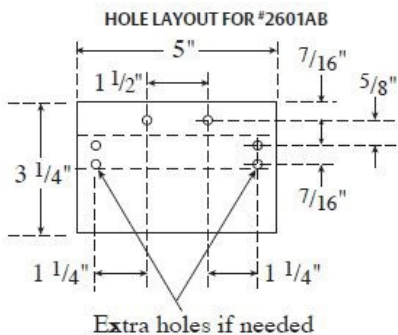
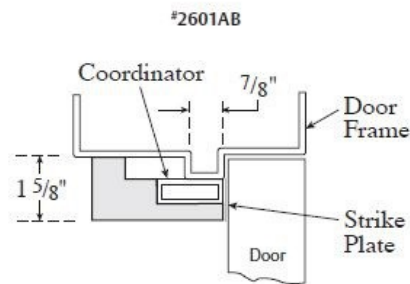


**TRADEMARK
HARDWARE**

WORLD OF QUALITY HARDWARE

PRODUCT SPECS

In some situations, where hardware such as parallel arm door closers or surface vertical rod strikes would normally be mounted to the door stop, installation becomes a little more complicated because the coordinator now covers the stop and no holes can be drilled (in the coordinator) which would interfere with the coordinator mechanism. The mounting brackets #2601AB (for stop widths $\frac{7}{8}$ " to $2\frac{1}{4}$ ") and #2601C (for stop widths over $2\frac{1}{4}$ ") are installed over the coordinator and mounted to the door frame. The hardware is then installed by drilling and tapping holes in the bracket. (NOTE: When mounting brackets are used, be sure to lower mounting holes for door applied hardware $\frac{15}{16}$ " to allow for coordinator and mounting brackets. The mounting bracket type and quantity need to be ordered with the coordinator.



SKU: R2601

