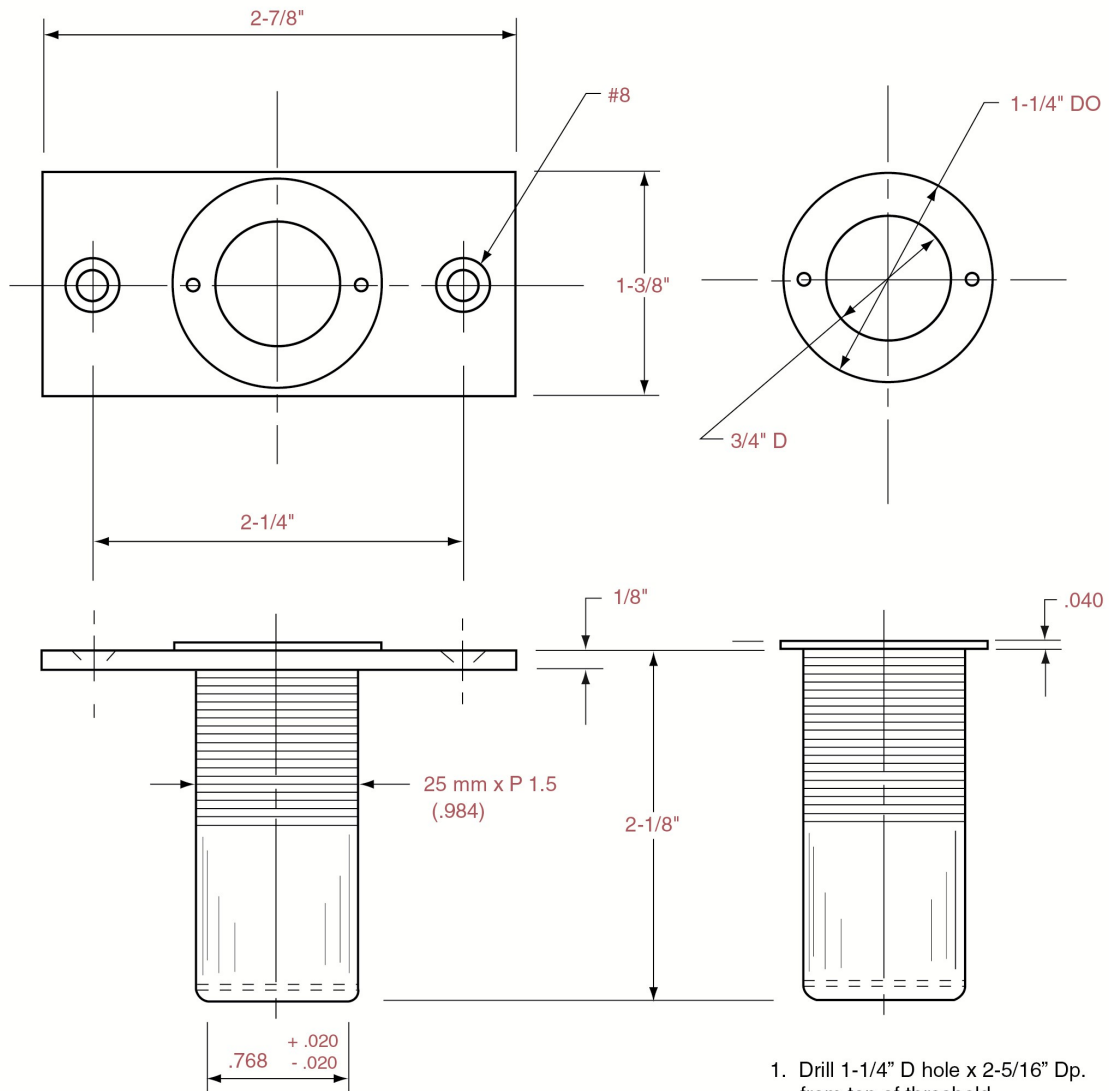




**Trademark  
HARDWARE**

# PRODUCT SPECS

## 570 Dust Proof Strike



1. Mortise plate into surface.
2. Drill 1-1/4" D hole x 2-3/16" Dp.
3. Drill 2 holes for plastic anchors or lead anchors to suit conditions.
4. Place anchors into holes.
5. Grout strike into floor.
6. Insert mounting screws.

1. Drill 1-1/4" D hole x 2-5/16" Dp. from top of threshold.
2. Grout strike into floor.

Not To Scale

### Discount Specials for All Products:

All orders over \$100 get 5% off.

All orders over \$200 get 5% off plus free shipping\*

All orders over \$300 get 10% off plus free shipping\*

All orders over \$600 get 15% off plus free shipping\*

All orders over \$1,000 get 20% off plus free shipping\*

\*exclusions apply

**Trademark  
HARDWARE**

148 Horton Drive, Suite B  
Monsey, New York 10952

Phone: 845.352.3200  
Fax: 845.367.4657

www.TMHardware.com  
sales@tmhardware.com