

OH900 Series Surface Mounted Door Stops and Holders

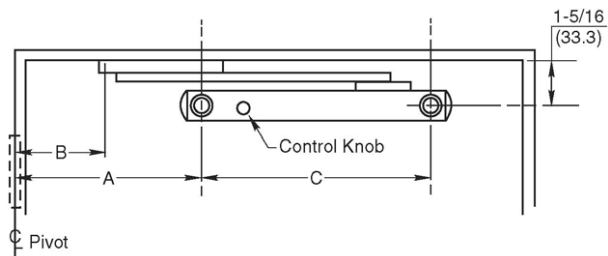
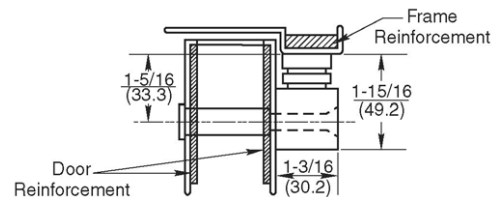
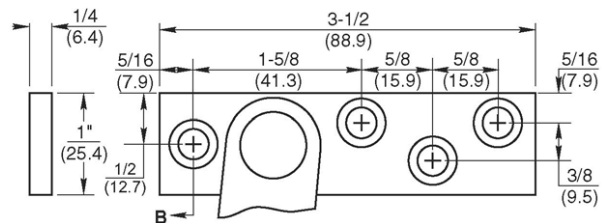
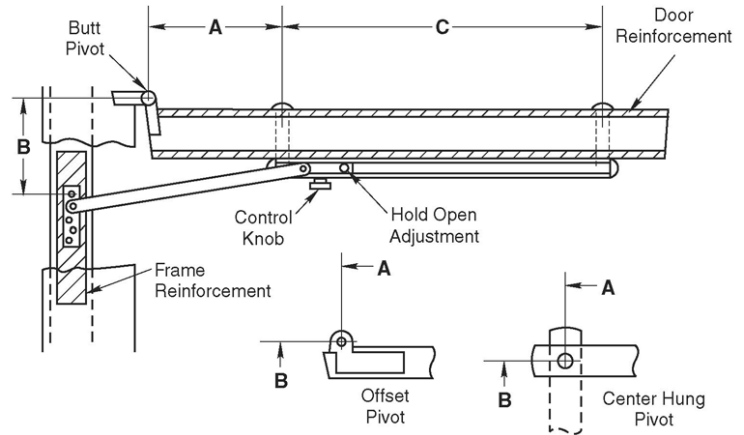
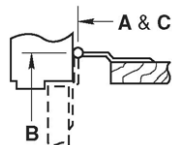
INSTALLATION INSTRUCTIONS

1. Select and determine degree of hold open or dead stop from chart on opposite side of page.
2. Locate "A" and "B" dimensions on door and frame.
3. Install jamb bracket on stop strip as shown.
4. Position channel on door with shock end located towards pivot. Drill 1/2 (12.7) dia. sex bolt hole, "A" dimension, 1-5/16 (33.3) down from stop strip as shown.
5. Install channel on door with "A" dimension sex bolt. Locate "C" dimension sex bolt hole making sure that channel is horizontal and parallel with stop strip. Drill 1/2 (12.7) dia. sex bolt hole and finish installing holder. Install control knob on channel as shown.

NOTES:

- All hollow metal frames should be properly reinforced with 3/16" (4.8) min. thickness x 12" (304.8) min. length reinforcement plates.
- All hollow metal doors should be properly reinforced with 2-1/2" (63.5) wide x 3/16" (4.8) min. thick x full width of door reinforcement plates.
- All drilling and tapping to be done by field men.
- Suggest mounting door stop or holder first and then other hardware to clear. Contact factory if interference results with other hardware.
- Left hand shown – right hand opposite. (Note hole pattern in jamb bracket).
- All dimensions are given in inches (mm).

CAUTION: Note location of swing clear hinge centerline to determine "A" and "B" dimensions.



FASTENERS:

Jamb: #1/4-20 x 3/4" FH MS or #14 x 1-1/2" FH WS (4 Places)
Door: 5/16-18 x 2" FH MS and 1/2" Dia. Sex Bolt (2 Places)



Not To Scale